

9-22-1932

1932 - Board of Trustee Meeting Minutes

Board of Trustees, Central Washington University

Follow this and additional works at: http://digitalcommons.cwu.edu/bot_minutes

Recommended Citation

Board of Trustees, Central Washington University, "1932 - Board of Trustee Meeting Minutes" (1932). *CWU Board of Trustees Meeting Minutes*. Book 10.

http://digitalcommons.cwu.edu/bot_minutes/10

This Book is brought to you for free and open access by the University Archives and Special Collections at ScholarWorks@CWU. It has been accepted for inclusion in CWU Board of Trustees Meeting Minutes by an authorized administrator of ScholarWorks@CWU.

MINUTES OF THE MEETING OF THE BOARD OF TRUSTEES

STATE NORMAL SCHOOL

ELLENSBURG

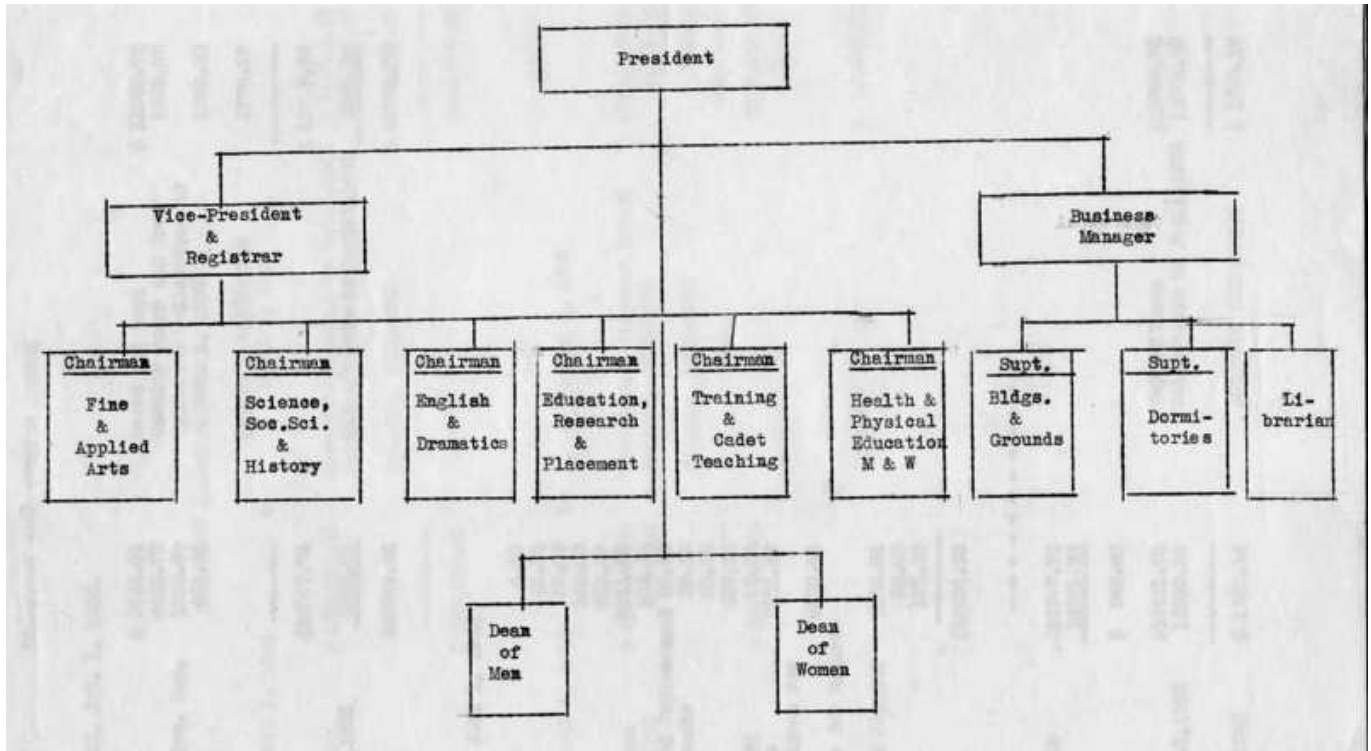
September 22, 1932

Those present were Wm. M. Yeaman, V. J. Bouillon and President R. E. McConnell.

The following item of business was considered.

President Robert E. McConnell presented evidence to show inefficiency in the business office and presented reports from the State Auditor to the effect that his department considers the head accountant at the Normal School inadequately trained for his position. It was unanimously agreed that the position of head accountant should be filled by a man who ^{is} ~~was~~ trained in accountancy and who has had experience in business and institutional work. President McConnell was authorized to search for a candidate.

Reported by R. E. McConnell
President, Washington State Normal School
Ellensburg, Washington



DOMITORY FALL QUARTER REPORT

ACCOUNTS RECEIVABLE, JAN. 1, 1932.

Board \$ 9643.01
 Room Rent 4443.75
 Faculty Board & Misc. Exp. 1000.00
 Apartment Rent 991.00

Board and Room \$ 11645.75
 Faculty Board and Room 1843.07
 Estimated Collections to
 Jan. 1, 1932. 1500.00

April 1, 1932 _____ to

ACCOUNTS RECEIVABLE
 April 1, 1932 _____

\$16767.76

\$ 16767.76

old a/c to Nov. 1, 1931 \$ 121,500.00
 3076.00

Expenditures, April 1 to Oct. 1, 1932 \$ 76,000.00
 old a/c. Dec. 1, 1931 3299.33

\$20766.02

BALANCE, 1931-1932 \$ 20766.02

\$ 123,500.00

\$123,500.00

ACCOUNTS PAYABLE, JAN. 1, 1932

Office Supplies \$ 4.50
 Telephone 40.00
 Fuel April 1, 1932 57.00
 Water 140.00
 Light and Power 610.59
 Food \$ 18911.83
 Kitchen Supplies, 1932 104.00
 Kitchen Repairs and Replacement 50.00
 Dormitory Replacements 33.10
 Janitor Supplies 20.76
 Laundry 637.96
 Freight and Hauling \$ 10075.31
 Salaries and Wages 2422.00
 Estimated Expenditures for
 December 4000.00
 Reserves set aside for Retire-
 ments.
 Bonds and Interest Payment 5005.04
 Trust Fee 80.00
 Insurance 125.00

to April 1, 1932

Expenditure (Present Staff) \$140,000.00
 Balance, 1931-1932 1,000.00

BALANCE, 1932-1933

10,000.00

DEFICIT BALANCE

\$ 10,000.00

TOTAL EXPENDITURE \$16221.73

Accounts Receivable \$16767.76
 Expenditures 16221.73

BOOK BALANCE \$ 546.03

Expenditure \$16221.73
 Collection to Jan. 1, 1932 14939.59

Expenditures \$16767.76
 Collections to Jan. 1, 1932 14939.59

DEFICIT FOR FALL TERM \$ 1222.14

ACCOUNTS RECEIVABLE \$ 1773.17

Minutes

ESTIMATED SALARY BALANCES

April 1, 1931 to April 1, 1932

1/2 Appropriation	\$ 155,500.00	Expenditure, Apr. 1 to Oct. 1, 1931	\$ 76,688.69
		Estimated to Apr. 1, 1932	77,159.06
		BALANCE, 1931-1932	1,632.25
	<hr/>		<hr/>
	\$ 155,500.00		\$ 155,500.00

April 1, 1932 to April 1, 1933

1/2 Appropriation	\$ 155,500.00	Expenditure (Present Staff)	\$ 144,935.00
Balance, 1931-1932	1,632.25	Balance, 1931-1932	1,632.25
		BALANCE, 1932-1933	10,865.00
	<hr/>		<hr/>
	\$ 157,132.25		\$ 157,132.25

RESIDUUM BALANCE \$ 12,247.25