

1-1967

## Quarterly Central Washington State College. Summer Session 1967

Central Washington University

Follow this and additional works at: <https://digitalcommons.cwu.edu/catalogs>

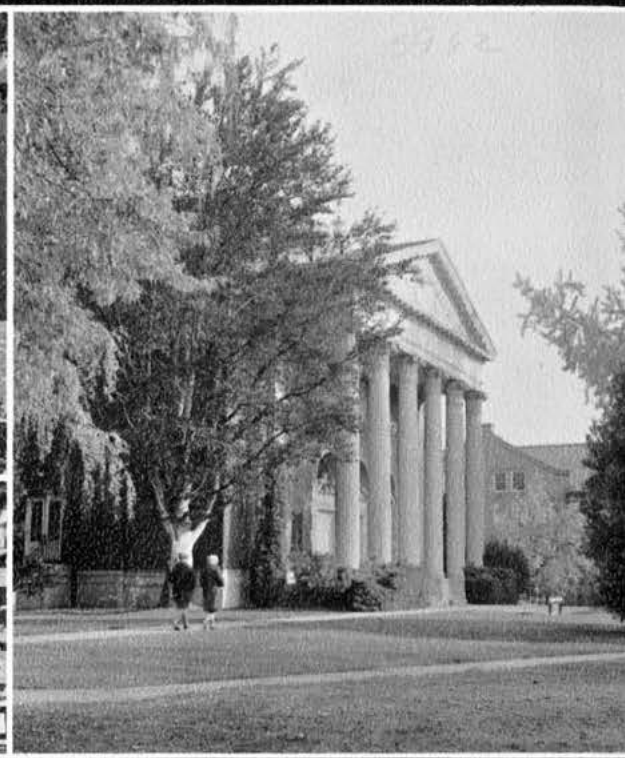
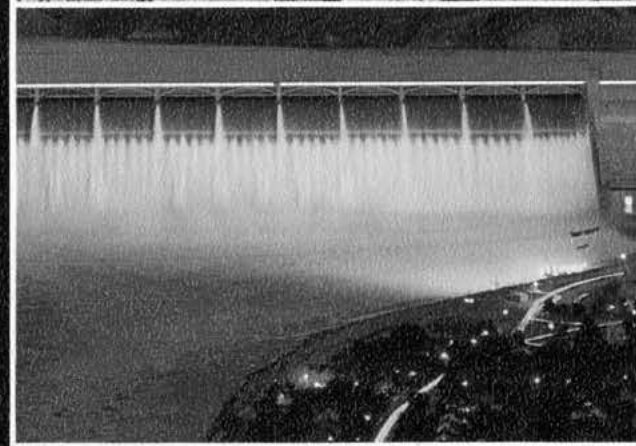
---

### Recommended Citation

Central Washington University, "Quarterly Central Washington State College. Summer Session 1967" (1967). *Course Catalogs*. 154.

<https://digitalcommons.cwu.edu/catalogs/154>

This Book is brought to you for free and open access by the University Archives and Special Collections at ScholarWorks@CWU. It has been accepted for inclusion in Course Catalogs by an authorized administrator of ScholarWorks@CWU. For more information, please contact [scholarworks@cwu.edu](mailto:scholarworks@cwu.edu).



SUMMER SESSION 1967  
CENTRAL WASHINGTON STATE COLLEGE · Ellensburg



*Apply by June 1,  
Register June 19-20  
& see page 13.*

## Quarterly

Volume 59, January, 1967, Number Two

FIRST TERM—June 19-July 20

SECOND TERM—July 21-August 18

# summer session 1967

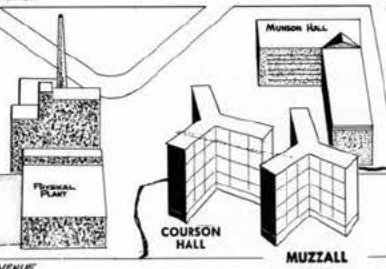
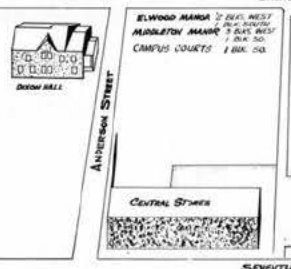
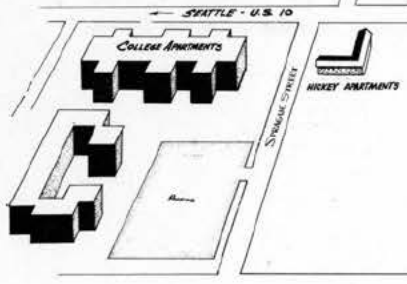
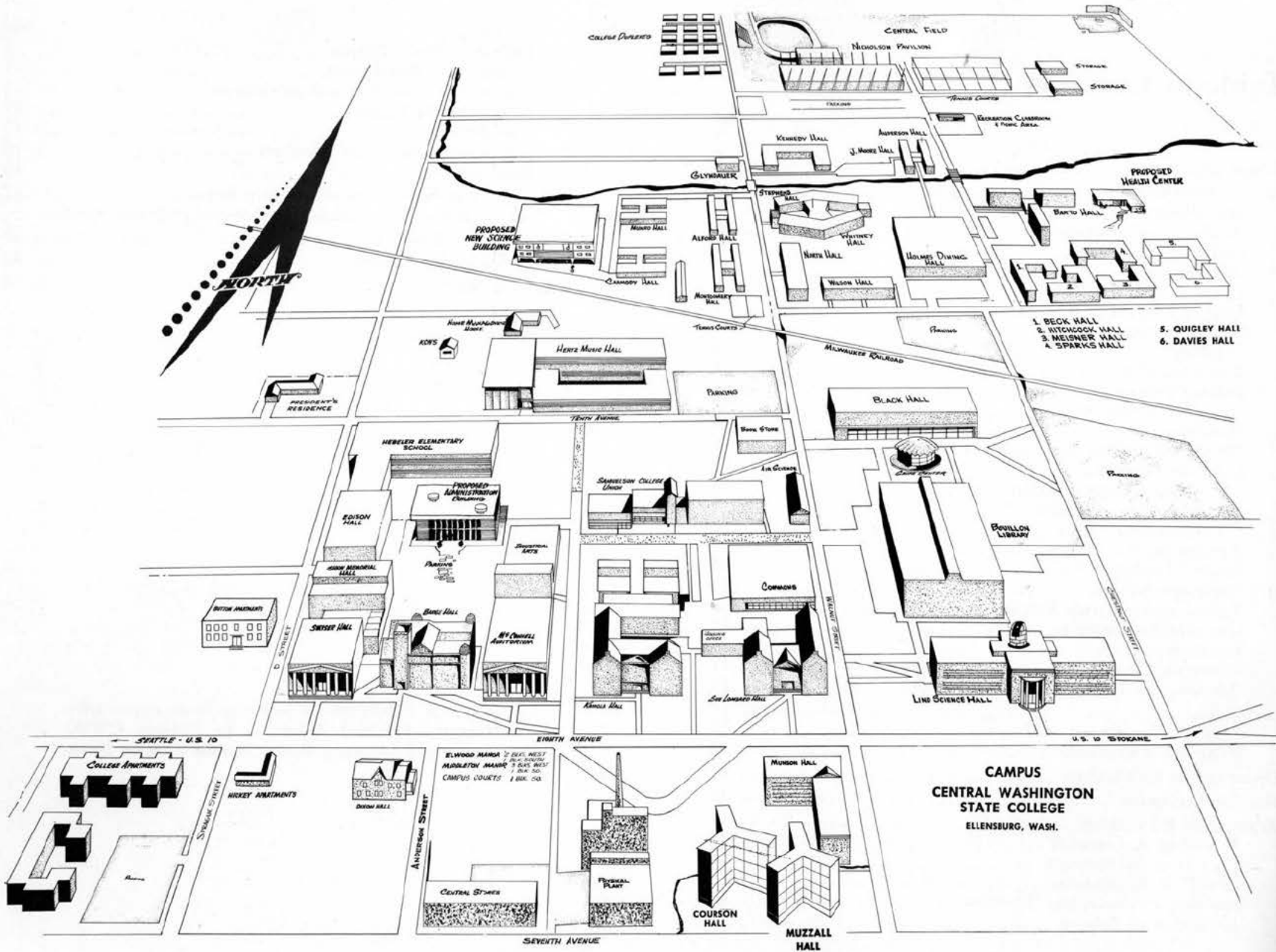
CENTRAL WASHINGTON STATE COLLEGE · Ellensburg

# Table of Contents

	<i>Page</i>
General Calendar .....	5
Administration .....	5
General Information .....	6
Accreditation .....	6
Buildings and Facilities.....	6
Curriculum .....	6
Office Hours .....	7
Library .....	7
Hebeler Elementary School.....	7
Student Health Service.....	8
Expenses .....	8
Room and Board.....	8
Parking Permits .....	9
Part-time Employment .....	9
Housing .....	9
Enrollment of Elementary School Children.....	9
Graduate Programs .....	10
Master's Degree Students.....	10
Fifth Year Students.....	10
Commencement .....	10
Application for Degree.....	10
Student Teaching .....	10
Placement Service .....	11
Transcripts and Grade Reports.....	11
Graduate Assistantships .....	11
Scholarships .....	11
Scholarship Standards .....	11
Admission to Teacher Education Program.....	11
Certification .....	12
Standard Certificates .....	12
Principals' Credentials .....	12
Opportunities for Children.....	12
Summer Recreation .....	12
Registration Information .....	13
Workshop Registration .....	14
Conference Registration .....	14
Change of Registration.....	14
Entering Freshmen and Transfers.....	14
Evaluation of Credits.....	14

	<i>Page</i>
Individual Study Courses.....	14
Student Load Regulations.....	15
Registration Procedure and Advisement.....	15
Numbering of Courses.....	15
Class Periods .....	15
Summer Session Course Numbers.....	16
Buildings .....	16
Special Summer Session Features (Green Section).....	17
See Pages 18-19 for workshops and special programs index.	
Summer Class Schedule.....	31
Faculty for Summer Session.....	42
CAMPUS MAP .....	4

COVER PHOTOS—(Clockwise from upper left)  
 Gingko Petrified Forest, Lake Chelan, CWSC  
 campus, Ellensburg Rodeo, Grand Coulee Dam.



**CAMPUS**  
**CENTRAL WASHINGTON**  
**STATE COLLEGE**  
 ELLENSBURG, WASH.

# GENERAL CALENDAR

## SUMMER SESSION—1967

### Pre-Session

Conservation and Outdoor Education Workshop  
(Hidden Valley Ranch) . . . . . June 12 through June 24  
Program in Remedial Reading  
(Bellevue) . . . . . June 12 through July 7

### First Term

Last day to file transcripts, application and  
\$30 pre-payment for summer quarter . . . . . Thursday, June 1  
\*Registration for all students . . . . . Monday, June 19  
and Tuesday, June 20  
Class instruction begins . . . . . Wednesday, June 21  
Class schedules may be changed . . . . . Friday, June 23  
Independence Day Holiday . . . . . Tuesday, July 4  
(July 3 is not a holiday)  
First term closes . . . . . Thursday, July 20

### Second Term

Instruction begins . . . . . Friday, July 21  
Second Term closes . . . . . Friday, August 18  
(See Special Program Calendar, page 18)

### College Board of Trustees

Mary Ellen Davis, chairman . . . . . Kirkland  
Joseph Panattoni, vice chairman . . . . . Ellensburg  
James D. Kendall . . . . . Moses Lake  
Roy P. Wahle . . . . . Bellevue  
Archie S. Wilson . . . . . Richland

\*Students planning to attend only the second session must register at the beginning of the first term. There will be no second term registration or change of schedule for second term.

## Administration

President . . . . . James Eugene Brooks, Ph.D.  
Assistant to the President . . . . . Donald Henry Baepler, Ph.D.  
Director of Institutional Research . . . . . Robert B. Smawley, Ed.D.  
Dean of Faculty . . . . . Charles John McCann, Ph.D.  
Dean of Arts and Sciences . . . . . Donald Frederick Warner, Ph.D.  
Assistant Dean . . . . . Bernard Loyal Martin, Ph.D.  
Dean of Education . . . . . John Wesley Crum, Ph.D.  
Assistant Dean . . . . . Donald Myron Schliesman, Ed.D.  
Dean of Graduate Studies and  
Summer School . . . . . Richard Anthony Nevé, Ph.D.  
Department Chairmen  
Aerospace Studies . . . . . Earl Edward Winters, M.A.  
Art . . . . . Louis Adolph Kollmeyer, Ed.D.  
Biological Sciences . . . . . Philip Conrad Dumas, Ph.D.  
Business Education . . . . . Eugene John Kosy, Ph.D.  
Chemistry . . . . . Leonard Conrad Duncan, Ph.D.  
Economics and Business  
Administration . . . . . Harold Southall Williams, Ph.D.  
Education (Acting) . . . . . Edwin Frank Price, Ed.D.  
English . . . . . Keith Rinehart, Ph.D.  
Foreign Languages . . . . . Odette Golden, Ph.D.  
Geography . . . . . Martin Richard Kaatz, Ph.D.  
Hebeler Elementary School . . . . . William George Gaskell, Ed.D.  
History . . . . . Walter Louis Berg, Ph.D.  
Home Economics . . . . . Louise Agnes Tobin, M.S.  
Mathematics (Acting) . . . . . Dale Robert Comstock, Ph.D.  
Music . . . . . Wayne Snyder Hertz, Ed.D.  
Philosophy . . . . . Chester Z. Keller, Ph.D.  
Physical Education . . . . . Albert Harold Poffenroth, M.S.  
Physics . . . . . Wilbur Vance Johnson, Ph.D.  
Political Science and Anthropology . . . . . Robert Yee, Ph.D.  
Psychology . . . . . Gerald Elmer Gage, Ed.D.  
Sociology . . . . . Virgil Jerome Olson, Ph.D.  
Speech and Drama . . . . . Jon Meyer Ericson, Ph.D.  
Student Teaching . . . . . Ralph Donald Gustafson, Ph.D.  
Technology and Industrial  
Education . . . . . Ronald Martin Frye, Ed.D.  
Director of Extension Services . . . . . David P. Dillard, M.A.

*Continued on Next Page*



Director of Libraries.....	George Fadenrecht, M.A.
Assistant Director of Libraries—	
Audiovisual.....	Charles William Wright, M.A.
Assistant Director of Libraries—	
Public Services.....	Clifford Peter Wolfsehr, M.A.
Registrar and Director of	
Admissions.....	Enos Edwin Underwood, M.Ed.
Associate Director of	
Admissions.....	Milton Mathew McDermott, M.Ed.
Dean of Students.....	Younger Theodore Witherspoon, Ph.D.
Dean of Men.....	Don Everett Wise, Ed.D.
Dean of Women.....	Marybelle Chase Rockey, M.A.
Director of Placement.....	B. Dean Owens
Director of Alumni.....	To be selected
Director of Counseling and	
Testing Services.....	Robert Stanford Miller, Ed.D.
Director of Student Activities and	
Student Union.....	App D. Legg, M.Ed.
Business Manager.....	William Arthur Hansen, M.B.A.
Director of Auxiliary Services.....	Wendell Donald Hill, B.B.A.
Director of College Relations and	
Financial Aid.....	Perry Howard Mitchell, M.A.
Director of Information.....	John Elliott Ludtka, M.S.

### For Additional Information See the Following:

Admission and Credit Evaluation	
Undergraduate.....	Registrar
Graduate.....	Dean of Graduate Studies
Application for Degree.....	Registrar
Conference Facilities.....	Director of Information
Extension and Correspondence	
Courses.....	Director of Extension Services
Fees or Business Matters.....	Business Manager
Graduate Assistantships.....	Dean of Graduate Studies
Housing.....	Director of Auxiliary Services
Placement.....	Director of Placement
Student Employment.....	Director of Financial Aid
Summer Session Information.....	Director of Summer Session
Teaching Certificates.....	Registrar
Transcripts.....	Registrar
Workshops.....	Director of Summer Session

# GENERAL INFORMATION

## Accreditation

Central Washington State College is fully accredited by the Northwest Association of Secondary and Higher Schools.

It is also accredited by the National Council for Accreditation of Teacher Education for the preparation of elementary teachers, secondary teachers, and school service personnel, with the master's degree as the highest degree approved. It is accredited by all higher institutions which are members of these associations. This provides a reciprocal relationship so credits earned in one institution will be accepted in the others to the extent the work taken meets the requirements of a given curriculum.

The College has also been approved by the United States Attorney General as an institution for non-quota immigrant students.

## Buildings and Other Facilities

Central has 60 buildings spread over 130 acres. The estimated worth is more than \$30 million. Ultra modern facilities include Bouillon Library, Hertz Music Hall, and remodeled and enlarged Shaw and Smyser classroom buildings.

Samuelson Union Building provides food services as well as recreational activities for summer session students.

In addition to these facilities, a closed circuit television network and the College's Hebel Elementary School provide opportunities for observation of teaching.

## The Curriculum

Central Washington State College offers three programs. One is in education wherein students may earn the Bachelor of Arts in Education and the Master of Education degree for the purpose of teaching or to prepare for positions of responsibility in the education profession. Another is the program in arts and sciences for those who intend to enter fields other than teaching in public schools. The Bachelor of Arts degree is offered in 27 major fields and the Master of Arts and Master

of Science degrees are offered in art, biology, chemistry, English, music, and psychology.

The third program is the pre-professional program available in many fields for those who propose to continue their work in other colleges or universities.

Complete descriptions of the programs will be found in the *General Catalog* and/or the *Graduate Bulletin*.

### Office Hours

Summer session office hours for the Business Office and Registrar:

8:00 A.M.—12:00

1:00 P.M.— 5:00 P.M

Closed Saturdays, Sundays

### The Library

The \$1,500,000 Bouillon Library building makes available under one roof to students and faculty the books, films, music, phonodiscs, art prints, periodicals, etc., which are indispensable to education. Designed to promote unity in administration and service, the library is a convenient and attractive place for study and research. A staff of experienced librarians, audiovisual experts, and other specialists are on duty here to assure competent service. The following closely-related areas and resources are located in this building:

**Printed Materials** number 105,913 volumes, including books, periodicals, newspapers, government publications, and pamphlets. All these materials are accessible to students on open shelves in or adjacent to comfortable reading areas.

**Audiovisual** materials include 2,524 motion picture films, 1,272 filmstrips, 64 sound filmstrips, 15 filmstrip series, 160 slide sets, 330 phonodiscs, and 464 tapes. Representative teaching machines and programs also are available.

All these materials are available without cost to students, for use in the library, in their instructional and research work.

The 16 mm. motion picture films are also available for rental on a "spot booking" basis to schools and other organizations. Catalogs and additional information are available upon request from the Assistant Director of Library for Audiovisual Services.

**Closed-Circuit Television** area is the headquarters for activities and instruction involved in the use of television for educational purposes. The closed-circuit television system connects the high school, junior high school, intermediate school, and three elementary schools by its cable distribution system to observation rooms on the College campus. The system is used in observation rooms on the College campus for observation and demonstrations in the teacher education program. It is possible to observe in more than 90 per cent of the classrooms in the local public school system.

**Curriculum Laboratory** has collections of materials for all subjects in elementary and secondary schools: textbooks, curriculum planning guides, educational reference works, bulletin board and poster suggestions, pamphlets, pictures, and related materials which are invaluable to teachers and future teachers.

**Instructional Materials Production** laboratory is equipped with work tables, tools, machines, supplies, and professional help to aid teachers in creating graphic and audio instructional materials. These materials include recordings, slides, charts, graphs, posters, photographs, and other special order materials.

**Xerox Copying Service** is in Room 100-A whereby library and other materials can be copied for personal use. All copying is done in lieu of hand transcription and the patron takes full responsibility for the use of any material thus copied.

**Tape Learning Laboratory**, with semi-private booths and tape recorders, is arranged to facilitate the study of programmed lessons.

**Music and Arts** library includes more than 6,200 phonograph records, hundreds of art books and prints, and modern facilities for using these materials for study and cultural growth.

### Hebeler Elementary School Library

Located on the campus in Hebeler Elementary School is an attractive library which serves the needs of the elementary school children and gives prospective teachers and teacher-librarians the opportunity to observe the important role of a well-equipped library in elementary education.

## Student Health Service

The College maintains a first aid station at the Health Center. On duty eight hours a day, five days a week is a registered nurse. The College physician is available by appointment. Medical advice and office treatment are free to all full time students. Those students needing bed care or emergency treatment during closed hours should go to the Taylor-Richardson Clinic or the Kittitas Valley Community Hospital.

## Expenses\*

**Regular Student Fees.** Fees for the summer quarter include such items as Health Service, Library, Laboratory Supplies, Student Government Association Fees, a building fee, and a miscellaneous fee, all payable at registration. A fractional credit shall be treated as a full credit.

Amounts are as follows:

1 to 3 credits.....	\$30.00
3½ to 6 credits.....	60.00
More than 6 credits.....	90.00

A pre-payment is necessary for both registration fees and housing for all academic quarters including the summer session. For the 1967 summer the rates are as follows:

\$30.00 pre-payment of fees before June 1, 1967,
\$75.00 pre-payment for college housing.

Please refer to the sections on "Room and Board" (pages 8-9) and to the section "Registration" (page 13) for details.

**Audit Fee.** Students pay the same fees during the summer session whether they take courses for credit or without credit.

**Industrial and Fine Arts Materials Tickets.** Students registering for industrial arts shop or laboratory classes and certain art laboratory classes are required to provide themselves with tickets used to pay for materials used in projects. Unused portions may be redeemed at the Cashiers' Office in Barge Hall.

**Science Breakage and Materials Tickets.** Students registering for science laboratory classes are required to provide themselves with tickets used to pay for broken or damaged laboratory equipment and for certain supplies used by the student. Most of the chemicals and

other supplies used in regular laboratory experiments are furnished without charge. Unused portions of tickets may be redeemed at the Cashiers' Office.

**Special Workshop Fees.** The regular fee schedule applies at time of registration. Students will be expected to pay their own costs on all field trips. See section describing workshops for details (page 20).

## Graduation Fees

Placement fees .....	\$1.00
Certificate fee .....	1.00
Degree fee .....	5.00
Student benefit fee .....	1.00
Cap and gown rental (B.A.).....	4.50
Cap, gown, and hood rental (Masters).....	9.00
Master's degree thesis binding fee (Plan I).....	15.00*

## Other Expenses

Transcript fee .....	\$1.00
Change of schedule fee.....	1.00
Parking fee .....	3.00

**Refunds.** Registration fees will be refunded as follows:

### Summer Session

1. Full refund if withdrawal is prior to start of classes on June 21.
2. Fifty per cent refund prior to day designated for change of schedule.
3. Twenty-five per cent refund if withdrawal is within the first ten days of the first term. No refund for first or second term will be processed after the first ten days of the first term.

**Room and Board.** Room and board for the summer session is \$180.00. This includes meals starting with breakfast on Monday and extending through lunch on Friday and multiple occupancy of rooms. If a single room is requested and is available, there will be an additional charge of \$9.00 for one term or \$18.00 for the full summer session. Students who live in college residence halls must eat in Holmes Dining Hall.

\*In the event the thesis or research papers deviate from the standard size (8½ x 11 inches) or for other reason or reasons requiring additional expenses in binding beyond that met by the regular fee, the student will be required to pay the actual cost of binding.

\*All expense items are subject to change.

Students planning to live in college housing for any portion of the summer must follow two steps to insure room assignment:

(1) Receive registration permit from Registrar (See section on "Registration" beginning page 13.) College housing reservation information will accompany the official notice of admission (2) Send request for room reservation together with housing prepayment to the Business Office. This request should list the exact session for which the reservation is made, namely: (a) both sessions—June 19 to August 18, (b) first term only—June 19 to July 20, (c) second term only—July 21 to August 18 or (d) a specific workshop or conference (name the workshop or conference and give the exact dates as listed in section on workshops, pages 18-19).

To reserve a room for the summer session or for one term of the summer session, a pre-payment of \$75.00 must accompany the Housing Application Contract. To reserve a room for a workshop, the charges for room and board must be paid in full.

Any student making reservations for the summer session who wishes to withdraw the pre-payment must do so by May 31 or forfeit \$25.00. Withdrawals after June 21 or the first day of classes will forfeit \$75.00. *It will be the duty of the student to check with the head resident if the length of term is changed after registration.*

The board and room costs are as follows:

Entire summer quarter .....	\$180.00
Either term (4½ weeks) .....	90.00
Three-week workshops .....	60.00
Two-week workshops .....	40.00
One-week workshops .....	20.00
Room on nightly basis .....	1.25
Guest Room charge (per night) .....	2.50

### Parking Permits

All vehicles parked on college property must be identified with a parking permit indicating the vehicle has been registered and required charges have been paid. Parking permits will be available at time and place of registration or at the Cashiers' Office at any time. The fee for summer is \$3.00. For shorter periods of time the fee is as follows:

One week .....	Free
Two weeks .....	\$1.00
Three weeks .....	2.00

### Part-Time Employment

The College aids students who are seeking part-time employment. Inquiries should be addressed to the Director of College Relations and Financial Aid. Secretarial services are in demand and many students are employed in the college dining rooms, the library, laboratories, offices, bookstore, Samuelson Union, switchboard, janitorial services, and others. Some off-campus work is available through the office.

### Student Housing

**Single Students.** There will be sufficient housing for single students during summer quarter. For additional information concerning preference of residence halls, please write to Director of Auxiliary Services, CWSC.

**Married Students.** The college has living accommodations for married couples with or without children. The college also maintains a partial listing of apartments for rent in the community. Persons wishing to obtain this information should write to Director of Auxiliary Services, CWSC.

### Enrollment of Elementary School Children

Hebeler Elementary School will enroll a limited number of students in summer demonstration classes. These classes include kindergarten through grade six, a remedial reading class, a core curriculum class, and a Montessori classroom. For further information, see the "Hebeler Elementary School" section of this catalog (page 30).

## GRADUATE PROGRAMS

**Graduate Student Defined.** A graduate student is defined as any student holding a bachelor's degree.

Central Washington State College offers programs leading to the Master of Arts degree, the Master of Education degree, and the Master of Science degree as well as the Standard Teaching Certificate and special credentials for school service personnel. Complete information



is available in the *Graduate Bulletin* available from the Dean of Graduate Studies.

### Program Planning for Graduate Students

All graduate students are expected to be able to do most of the planning for their programs of study. Advisers will be available to help solve programming and scheduling problems. *However, much time will be saved if all students will work out tentative programs before going to their advisers.*

### Master's Degree Students

Students pursuing a M.A., M.S. or M.Ed. degree must schedule an appointment with the Dean of Graduate Studies within 30 days of their first registration. Students taking graduate courses with no advanced degree as a goal would be well advised to contact the Graduate Office.

Master's degree students are advised to recall the following information when planning their programs:

- (1) Credits earned by correspondence or extension shall not apply toward the Master of Arts or the Master of Science degrees.
- (2) Credits earned in correspondence may not be applied to the Master of Education degree.
- (3) A maximum of 9 credits earned by extension may be applied toward a Master of Education degree but will not apply toward meeting residence requirements.
- (4) Not more than two workshops with a combined maximum of 8 credits can be accepted as a part of the Master of Education program.

Students beginning a master's degree program at Central Washington State College are required to furnish scores for the Graduate Record Examination to be taken during the first quarter of graduate work. The two scores required are (1) the Aptitude Test and (2) the Advanced Test in the area of major graduate study. The cost to each student will be \$4.50, payable at the time of registering for the tests. Registration for tests will take place in the Counseling and Testing Office, 106 Edison Hall, July 3 through July 8. The tests will be administered August 3. The location for the test will be announced at the time of registration.

### Fifth Year Students

Students pursuing a fifth year of teacher education leading to a Standard Certificate should plan programs to strengthen them as teachers and to further prepare them for the kind of educational assignments they expect to have in the near future. Their own evaluations of themselves as teachers, the suggestions of their administrators, the counsel of college supervisors, their plans for professional growth and advancement, and the fifth year evaluation obtainable from the Teacher Education Office should serve as guides in planning a program of study. Students working on other teaching certificates should use the evaluation forms obtainable from the Registrar's Office as guides.

### Commencement

There is only one commencement each year. It is at the close of the spring quarter and serves as commencement for those who completed degree requirements in the summer, fall, winter, and spring quarters. All graduate students who complete the requirements for the master's degree during the summer, fall, winter, and spring quarters shall be expected to participate in the spring commencement. Individuals who complete the requirements for a bachelor's degree during the summer, fall, and winter quarters shall be encouraged to attend the spring commencement along with the spring quarter graduates.

### Application for Degree

Students planning to receive a B.A. degree at the end of the summer quarter must make application to the Registrar's Office by June 30. Students working for a master's degree will apply for the degree upon satisfactory completion of all requirements.

### Student Teaching

Student teaching assignments for the summer session are reserved for persons who have had prior teaching experience and who are seeking certification through the state office.

All applications for student teaching during the summer quarter must be approved through the Director of Student Teaching by May 1. See further information under "Hebeler Elementary School" (page 30).

## Placement Service

The college maintains an active placement service which helps graduating students and alumni who are seeking employment. A record of the work and qualifications of each graduate is kept on file in the placement office, but it is the responsibility of the individual to assist the placement office in keeping his record up to date by supplying new addresses, references, and other information.

A registration fee of three dollars is required of experienced teachers who wish to have their names placed on the active placement list.

## Transcripts and Grade Reports

Grades are recorded for all classes at the close of the summer quarter and a grade report will be sent to each student. Official transcripts are sent only at the request of the student.

## Graduate Assistantships

Central Washington State College selects graduate assistants who are assigned to quasi-professional work in the various academic divisions or in one of the administrative offices or service departments. Graduate assistantships for summer session pay \$200.00 per month and require two hours of service per college day. Applicants for graduate assistantships must (1) have a grade point average that will permit them to be admitted to the master's degree program, (2) be planning a program leading to the master's degree at Central, (3) have the recommendation of faculty and/or school administrators, and (4) show professional promise.

Assistantships are awarded for the summer session or for the regular academic year. Interested persons should contact Dr. Richard A. Nevé, Dean of Graduate Studies.

## Scholarships

Special scholarships, grants, or stipends may be available to students enrolling in some summer session program.

A number of scholarships are usually available for teachers wishing to participate in one of the conservation and outdoor education work-

shops. Contact Prof. Janet Lowe, Director C.O.E. Workshop, Department of Biology, CWSC, by April 30.

The Washington Congress of Parents and Teachers offers a limited number of scholarships in such areas as counseling and guidance, exceptional children, and librarianship. Contact the Washington Congress of Parents and Teachers, 531 Security Building, Tacoma, Washington 98402.

## Undergraduate Scholarship Standards

For full information regarding scholarship regulations for undergraduates, please consult the *General Catalog*.

## Scholarship Standards for Graduate Students

Students working towards completion of the fifth year of teacher preparation and the Standard Teaching Credential are required to maintain a grade point average of 2.00 (C) or above. Students working towards completion of requirements for the master's degree are required to maintain a grade point average of 3.00 (B) or above during their graduate work.

## Admission to the Teacher Education Program

Prospective teachers must be admitted to the professional teacher education program in accordance with the following regulations:

Students preparing to teach (B.A. in Ed.) will make application for admission to the professional teacher education program during the first quarter of their sophomore year. Students transferring to Central with sophomore or higher standing and preparing to teach will make application for admission to the professional teacher education program during the first quarter of their attendance at Central. Students delaying application beyond those dates may find their college program unnecessarily prolonged. Application will be handwritten and filed with the Assistant Dean of Education. (For details contact the Education Department or refer to the *General Catalog*.)

# CERTIFICATION

## Emergency and Qualifying Teacher Certificates

These certificates are issued by the State Department of Public Instruction.

Applications should be made directly to your local County Superintendent of Schools.

## Standard Certificates

Information regarding certification may be secured in the Registrar's Office. Applications for the Standard Teaching Certificates should be made in the Registrar's Office. Complete information on Standard Certification will be found in the *General Catalog*.

## Principals' Credentials

Provisional principals' credentials require 24 quarter hours beyond the bachelor's degree in an approved program, 9 hours of which must have been earned after completion of the fifth college year. Three years of successful teaching experience is required.

Standard principals' credentials require 12 quarter hours to be earned after issuance of the provisional principals' credentials. A master's degree and three years of successful principal's experience is required. The fields of study include school administration, curriculum, and supervision. Studies to strengthen candidates' general education are required when necessary. Graduate study standards are to be met. Laboratory and internship experiences as needed are to be provided. A detailed statement of the principal's credential program may be secured from Dr. Roy F. Ruebel, Department of Education, CWSC.

## Opportunities for Children

The Ellensburg Public School District will again make available their summer school program for youngsters from pre-primary age (5 years) through high school age. Students attending Central Washington State College who have children are encouraged to have them enrolled. A fee is charged.

The summer school program is designed to offer a curriculum entirely different from that offered during the regular school term. The philoso-

phy surrounding this program calls for drawing forth creative talent of youngsters, enriching previous experiences, and promoting healthy physical activities with accent on individual development. Those opportunities scheduled at this printing are as follows:

### a. CREATIVE EXPERIENCES

1. Creative Art
2. Creative Dramatics
3. Creative Writing
4. Leadership Skills

### b. ENRICHMENT EXPERIENCES

1. Music—Instrumental and Choral
2. Reading Improvement
3. Arithmetic Understanding
4. Conversational Spanish
5. Typing
6. Shop Craft

### c. PHYSICAL DEVELOPMENT

1. Golf
2. Sports Skill
3. Tennis
4. Archery

Since there may be changes and additional offerings, it is suggested that interested persons who wish further information write:

Mr. Gerald Hosman  
Ellensburg Summer School Program  
Washington Elementary School  
Ellensburg, Washington

## Summer Recreation

The Samuelson College Union and Student Activities Office have a program of recreation designed to help plan out-of-class hours for cultural, recreational, and social benefit. Nicholson Pavilion and Samuelson Union Building are the major centers of activity. A picnic and recreation area, located on the north campus, is also available. This facility houses both indoor and outdoor fireplaces, covered and open table areas, and running water. The area is well shaded and fenced, with outdoor horseshoe pits, and volleyball and badminton areas.

*Summer program.* Plans for the 1967 summer recreation program

include bowling leagues for men, women, and married couples; daily indoor swimming and recreation in the pavilion; softball leagues; bridge; and outstanding film fare. The films will be offered in McConnell Auditorium each Friday and Saturday night. Summer students will also enjoy bridge instruction, art exhibits, and special assemblies. A program initiated in 1963, "Forthright Review," will be continued. This series of book reviews combines the work of recognized authors with the insight, background, and thought of prominent Central faculty members.

Children of students and staff may use all game room equipment and participate in swimming at Nicholson Pavilion pool. Family night at Nicholson Pavilion opens all facilities to the whole family. Swimming instruction for children is planned with professional staff members as instructors.

*Pleasure Drives.* Summer students at Central Washington State College have an excellent opportunity to visit places of interest in Washington State. Located near Ellensburg are the Ginkgo Petrified Forest State Park and Museum, Mt. Rainier State Park, and the recently completed Wanapum Dam. Within easy driving distance are the internationally famous Dry Falls and Sun Lakes State Parks, enchanting Lake Chelan, the Puget Sound area, and the Wenatchee and Yakima Valley fruit orchards.

*Hydro-Electric Developments.* Grand Coulee Dam, Priest Rapids Dam, Chief Joseph Dam, Rocky Reach Dam, Wanapum Dam, and The Dalles Dam, all located on the Columbia River, are natural destinations for those interested in witnessing the development and production of Washington State's abundant hydro-electric power. The nearby Columbia Basin, with its tremendous irrigation program, attracts visitors from all corners of the globe.

## REGISTRATION INFORMATION

### Admission to Summer School

#### Former Students

1. All students enrolled during the 1966 summer session or currently enrolled during the 1967 spring quarter must submit a \$30.00

registration pre-payment by Thursday, June 1, 1967. Form #1, "Form to Accompany \$30.00 Pre-payment" (in back of this catalog) must be submitted with the pre-payment to the Admissions Office. Qualified students will then be sent an official permit to register for the summer session. Registration permits will include the date and time of registration and must be presented in order to begin registration. Students not meeting the June 1 deadline cannot be guaranteed admission for the 1967 summer session.

2. Former students not enrolled during summer 1966 or spring 1967 must submit a \$30.00 pre-payment by Thursday, June 1, 1967 to the Admissions Office along with the following forms (inside back cover):
  - A. Form #1, "Form to Accompany \$30.00 Pre-payment"
  - B. Form #3, "Application for Re-enrollment—Former Students"
  - C. Form #4, "Master Name Information"

Qualified students will then be sent an official permit to register for the summer session. Registration permits will include the date and time of registration, and must be presented in order to begin registering. Students not meeting the June 1 deadline cannot be guaranteed admission for the 1967 summer session.

#### New Students (For academic requirements on admission see *General Catalog*.)

All students planning to enter Central Washington State College for the first time must submit a \$30.00 registration pre-payment by Thursday, June 1, 1967 to the Admissions Office along with the following forms (inside back cover):

- A. Form #1, "Form to Accompany \$30.00 Pre-payment"
- B. Form #2, "Application for Admission to Central Washington State College"
- C. Form #4, "Master Name Card Information"
- D. Form #5, "Medical History Form" (Undergraduates only)

Also, an official copy of a transcript from each institution previously attended must be mailed directly to the Office of Admissions. NOTE: Students who have not previously attended college must have their high school records sent directly to the Office of Admissions.

Graduate students working toward a Master's degree, entering Central for the first time must have a second transcript sent to the Graduate Office.

Qualified students will then be sent an official permit to register for the summer session. Registration permits will include the date and



time of registration and must be presented in order to begin registering. Students not meeting the June 1 deadline cannot be guaranteed admission for the 1967 summer session.

### Workshop Registration

Size of workshop enrollment is limited. Students are advised to register for workshops during the regular registration June 19 and 20. Students unable to register for workshops at this time will be allowed to register the first day of the workshop, provided they have completed the requirements for admission to summer school. Students planning to register for both a workshop and first or second term classes must register during regular registration June 19 and 20.

Pre-registration is required for many of the workshops. Interested students are advised to read the information in the "Special Summer Session Features" section of this catalog for pre-registration deadlines.

### Conference Registration

There will be two conferences for school administrators. Because these conferences are offered for no credit, registration and fees will be handled by the directors of the conferences. Please read the information in the "Special Summer Session Features" section of this catalog for details.

### General Registration Information

In order that the summer term may prove of maximum value and the work of classes not be interrupted by late entrants, students must pay all fees and complete their registration on days set for registration. Students planning to attend the entire summer session or the first or second term only must complete their registration on June 19 and 20. Please consult the *General Catalog* for all general, major, and minor requirements as well as course descriptions and prerequisites.

### Change of Registration

The only opportunity for change of registration will be Friday, June 23. Students must register for first and second terms at the beginning of the first term. Changes in registration are permitted on "Change of Schedule Day" upon payment of change of schedule fees of \$1.00. Necessary forms are secured at the Registrar's Office.

### Entering Freshmen and Transfers (Summer Session, 1967)

High school seniors and junior college transfers are urged to consider enrollment during the 1967 summer session. Special assistance will be given to new students. Students should apply by June 1, 1967. Registration will be June 19-20 and classes begin June 21. For additional information write to the Director of Admissions, Central Washington State College. All students entering Central Washington State College for the first time during Summer Session 1967 and who plan to continue through Fall 1967 must report to the Office of Admissions before August 1.

### Evaluation of Credits

Evaluation of transcripts and determination of requirements is a time consuming process and students must be aware that evaluations cannot be made on demand. The following guidelines should be helpful:

1. Former students cannot expect a new evaluation for each summer session. Their original evaluation should be in their possession at the time of registration.
2. New undergraduate transfer students will find an evaluation necessary and should request such evaluation from the Office of Admissions at least four weeks before the time of registration.
3. Students who have previously applied for admission to the master's degree program will have evaluations made by the Graduate Office by appointment only.

### Individual Study Courses

"Individual Study" courses (courses numbered 496, 497, 498, 596, 597, and 598) are reserved for superior students and should include either (1) advanced study on specific topics that are not offered as separate courses, or (2) other areas for which the student is prepared but which are not covered as existing courses.

Students wishing to register for "Individual Study" courses shall: (1) in conference with the appropriate department chairman or a professor designated by him determine the specific topic to be studied and outline the project; (2) fill out an Individual Study Permit form, including an outline or description of the study project; (3) receive the approval signatures of the department chairman, the teacher responsible for the individual study course, and the Dean of Education

or Dean of Arts and Sciences prior to the completion of registration; (4) hand in completed forms in lieu of class card at the time of registration.

## Student Load Regulations

**Workshops and Student Loads.** Two-week workshops are designed for those students who wish to concentrate on a specific problem for a short period of time during which all or most of their time is devoted to this problem. *For this reason two-week workshops are considered to be full time courses. Students may take only one two-week workshop during a given two-week period.* Two two-week workshops may be taken during a given term (4½ weeks) whenever such workshops are scheduled during different two-week periods of time. In no case may more than 3½ credits of regular course work be taken in addition to the two-week workshop or workshops during a given 4½ weeks or term.

**Normal Load and Overloads for Graduate Students.** The normal load for graduate students is fifteen (15) credits per quarter. All loads above sixteen (16) credits must be approved by the Graduate Study Committee. For one term (4½ weeks) of the summer session eight (8) credits shall be the maximum load without approval of the Graduate Study Committee. Under no circumstances shall more than eighteen (18) credits be granted to any one graduate student during one quarter or nine (9) credits during one term (4½ weeks).

**Standard Load and Overloads for Undergraduates.** Fifteen credits per quarter is a standard undergraduate load.

Students on academic probation (those whose last quarter of work or whose cumulative grade point average is less than a 2.00 (C) average may take up to and including 14 credits.

Students in good standing—whose cumulative grade point is 2.00 (C) or above—may take up to and including 19 credits. Students wishing to take 20 or more credits need to be in good academic standing—cumulative grade point average of 2.00 (C) or above—and shall petition the Dean of Students for permission.

Undergraduate loads are recommended in accordance with the following schedule:

Cumulative G.P.A.	Maximum Load (for undergraduates)	
	Quarter	Term
2.00 to 2.49 .....	15 credits	8 credits
2.50 to 2.99 .....	17 credits	9 credits
3.00 or above .....	19 credits	9.5 credits

Approval for undergraduate overloads above 20 credits may be granted by the Dean of Students Office after a check of the student's record has been made.

## Registration Procedure and Advisement

Students will report to Nicholson Pavilion at the time given on their Permit to Register. All registration and advisement (graduate and undergraduate) will be in the Pavilion. Students will not be admitted to the Pavilion until the time indicated on the Permit to Register.

## Numbering of Courses

Courses are numbered as follows:

Physical Education Activities.....	1 through 99
Freshman .....	100 through 199
Sophomore .....	200 through 299
Junior .....	300 through 399
Senior .....	400 through 499
Graduate Students Only .....	500 through 600

Students may elect courses one year ahead of their present year, except when otherwise designated. Courses numbered 500 and above are for graduate students only. The prerequisites for all courses must be met as indicated by the description of the course.

## Class Periods

1 .....	7:30 a.m.- 8:30 a.m.
2 .....	8:40 a.m.- 9:40 a.m.
3 .....	9:50 a.m.-10:50 a.m.
4 .....	11:00 a.m.-12:00
5 .....	12:10 p.m.- 1:10 p.m.
6 .....	1:20 p.m.- 2:20 p.m.
7 .....	2:30 p.m.- 3:30 p.m.
8 .....	3:40 p.m.- 4:40 p.m.

Classes are scheduled during the noon hour.

## Summer Session Course Numbers

The following information has been designed to help students prepare their summer program.

Please note Data Processing course numbering system:

Workshops' Data Processing numbers are preceded by "O"

Data Processing numbers 1000 to 1999 indicate first term courses

Data Processing numbers 2000 to 2999 indicate second term courses

Data Processing numbers 3000 to 3999 indicate full session courses.

## Buildings

A—Barge Hall (Administration Building)

B—Black Hall (Education-Psychology Building)

C—Smyser and Shaw Halls

E—Hebeler Elementary School

H—Hertz Music Hall

I—Industrial Arts Building

L—Bouillon Library

N—Nicholson Pavilion

Q—Edison Hall

R—Radio and TV Building

S—Lind Science Hall

U—Samuelson Union Building (SUB)

X—Aerospace Studies Building (AFROTC)

Z—McConnell Auditorium

## PLEASE CHECK FOR PREREQUISITES

Since it is not possible to carry complete course descriptions for all summer offerings, students are urged to check with an adviser before completing registration procedures. Advisers will be available at the place of registration.



*Muzzall and Courson Halls*

# CWSC SUMMER SESSION SPECIAL PROGRAM DATES

JUNE											JULY											AUGUST																																											
12	13	14	15	16	17	18	19	20	21	22	23	24	25	26	27	28	29	30	1	2	3	4	5	6	7	8	9	10	11	12	13	14	15	16	17	18	19	1	2	3	4	5	6	7	8	9	10	11	12	13	14	15	16	17	18	19									
FIRST TERM											SECOND TERM																																																						
1. C.O.E.											2. ELEMENTARY MUSIC											3. CHORAL											4. BASIC BUSINESS											5. ADMIN. AND SUPERV. OF SPEC. ED. PROGR.																					
6. REMEDIAL READING—BELLEVUE																																	7. CONTENT IN FAMILY LIFE																																
8. REMEDIAL READING—HIGHLINE																																	9. COORDINATION AND WORK EXPERIENCE																																
10. LITERARY VALUES																																	11. LIVING ENVIRONMENT																																
12. APPLIED MONTESSORI EDUCATION I																																	13. APPLIED MONTESSORI EDUCATION II																																
14. INTRODUCTION TO MONTESSORI EDUCATION																																	15. MODERN RESEARCH AND MONTESSORI EDUCATION																																
16. SEMINAR IN CURRICULUM (AEROSPACE EDUCATION)																																	17. INQUIRY TRAINING																																
18. AVIATION AND SPACE EDUCATION INSTITUTE																																	19. CRIPPLED CHILD											20. CAMPING FOR CRIPPLED CHILDREN—BONNEVILLE																					
21. OPERA WORKSHOP																																	23. CAMPING FOR CRIPPLED CHILDREN—ILLAHEE																																
22. CREATIVE DRAMATICS																																												26. PERCUSSION																					
24. CHILDHOOD LANGUAGE PROBLEMS (SPEECH PATHOLOGY)																																												28. CURRICULUM AND METHODOLOGY																					
25. PLAY THERAPY																																																																	
27. INNOVATIONS IN READING											I.T.A. WORDS IN COLOR											LINGUISTICS											LANGUAGE EXPERIENCE																																
29. REMEDIAL READING—ELLENSBURG																																																																	
30. PROFESSIONAL WRITING FOR EDUCATORS																																																																	
31. SEMINAR IN EDUCATIONAL ADMINISTRATION																																																																	
32. CURRICULUM ENRICHMENT IN NURSERY EDUCATION																																																																	
33. CONSTRUCTION AND DESIGN OF COSTUMES																																																																	
34. PERSONAL AND FAMILY FINANCIAL SECURITY																																																																	
35. RHYTHMS FOR INTERMEDIATE GRADES																																																																	
36. TRACK AND FIELD																																																																	
37. WRESTLING																																																																	
38. CREATIVITY											39. EVALUATION IN HOME EC.																																																						
40. JUNIOR HIGH AND SENIOR HIGH PRINCIPAL'S CONFERENCE																																																																	
41. DATA PROCESSING FOR EDUCATORS																																																																	
42. NDEA INSTITUTE IN CIVICS (SOUTHEAST ASIA)																																																																	
43. NDEA INSTITUTE IN FOREIGN LANGUAGE SUPERVISION																																																																	
44. ENGLISH POETRY FOR SECONDARY SCHOOL TEACHERS																																																																	
45. ENGLISH PROSE FOR SECONDARY SCHOOL TEACHERS																																																																	



# Special Programs and Dates

1. Sci. Ed. 440 COE, *Conservation and Outdoor Education Workshop*, June 12 through June 24, see page 22.
2. Mus. 440E, *Elementary Music Education Workshop*, June 26 through July 7, see page 27.
3. Mus. 440C, *Choral Workshop*, July 17 through July 21, see page 27.
4. Bus. Ed. 440BB, *Basic Business Workshop*, July 31 through August 4, see page 22.
5. Sp. Ed. 440AS, *Administration and Supervision of Special Education Programs*, August 7 through August 18, see page 22.
6. Sp. Ed. 428 and Sp. Ed. 483, *Remedial Reading*, and *Practicum in Remedial Reading (Bellevue)*, June 12 through July 7, see page 29.
7. H. Ec. 440CFL or Ed. 440 CFL, *Content in Family Life Education Workshop*, July 24 through August 4, see page 23.
8. Sp. Ed. 428, and Sp. Ed. 483, *Remedial Reading and Practicum in Remedial Reading*, June 19 through July 14, (Highline) see page 29.
9. Bus. Ed. 440 WE, *Coordination and Work Experience in the Office Occupations*, July 24 through July 28, see page 22.
10. Eng. 440 LVW, *Literary Values Workshop*, June 19 through July 14, see page 24.
11. H. Ec. 440 LE, *Living Environment*, July 21 through August 18, see page 25.
12. Ed. 499, Seminar: *Applied Montessori Education I*, June 19 through July 20, see page 26.
13. Ed. 499, Seminar: *Applied Montessori Education II*, July 21 through August 18, see page 26.
14. Ed. 440 ME, *Introduction to Montessori Education*, June 19 through July 20, see page 26.
15. Psych. 499, *Seminar in Modern Research and Montessori Education*, July 21 through August 18, see page 27.
16. Ed. 599C, *Seminar in Curriculum (Aerospace Education)*, June 19 through July 20, see page 21.
17. Ed. 440 IT, *Inquiry Training*, July 24 through August 17, see page 23.
18. Ed. 440.3, *Aviation and Space Education Institute*, June 19 through July 20, see page 21.
19. Ed. 440 CCh, *The Crippled Child Workshop*, July 23 through July 28, see page 23.
20. Ed. 440 CCB, *Camping for Crippled Children, Bonneville*, July 30 through August 19, see page 23.
21. Mus. 561, *Opera*, June 19 through July 20, see page 27.
22. Sp. 440 CD, *Creative Dramatics Workshop*, June 19 through July 20, see page 30.
23. Ed. 440 CCI, *Camping for Crippled Children, Illabee*, July 30 through August 12, see page 23.
24. Sp. 440 SP, *Childhood Language Problems Workshop*, June 19 through July 20, see page 29.
25. Ed. 440 PT, *Play Therapy*, June 21 through July 12, see page 24.
26. Mus. 440 P, *Percussion Workshop*, July 31 through August 11, see page 27.
27. Ed. 440 IR, *Innovations in Reading Workshop*, June 21 through July 19, see page 25.
28. Ed. 440 IE and Ed. 440 IS, *Innovations in Curriculum and Methodology*, August 1 through August 18, see page 20.
29. Sp. Ed. 428 and Sp. Ed. 483, *Remedial Reading*, and *Practicum in Remedial Reading*, Ellensburg, June 21 through July 20, see page 29.
30. Ed. 440 PW, *Professional Writing for Educators Workshop*, June 21 through July 20, see page 24.
31. Ed. 599A, *Seminar in Educational Administration*, June 21 through July 20, see page 24.

## SPECIAL PROGRAMS AND DATES—Continued

32. H. Ec. 440 CENE, *Curriculum Enrichment in Nursery Education*, June 21 through July 20, see page 25.
33. H. Ec. 440 C&D, *Construction and Design of Costumes*, June 21 through July 20, see page 25.
34. Bus. Ed. 440 FS, *Personal and Family Financial Security*, June 21 through July 20, see page 21.
35. Phys. Ed. 440 RhI, *Rhythms for Intermediate Grades*, June 21 through July 20, see page 28.
36. Phys. Ed. 440 TF, *Track and Field Workshop*, June 21 through July 20, see page 28.
37. Phys. Ed. 440 W, *Wrestling Workshop*, June 21 through July 20, see page 29.
38. H. Ec. 440C, *Creativity*, June 21 through July 5, see page 25.
39. H. Ec. 440 EHE, *Evaluation in Home Economics*, July 6 through July 19, see page 25.
40. *Junior High-Senior High Principal's Conference*, June 26 through June 28, see page 20.
41. Ed. 440 DP, *Data Processing for Educators Workshop*, June 26 through July 30, see page 25.
42. Anthr. 484, Geog. 484, Pol. Sci. 484, and Soc. Sci. 440, *NDEA Institute in Civics, Southeast Asia*, June 26 through August 4, see page 28.
43. For. Lang. 440 AFLP, *NDEA Institute in Foreign Language Supervision*, June 26 through August 11, see page 28.
44. Eng. 440 EPW, *English Poetry Workshop for Secondary School Teachers*, June 19 through August 18, see page 24.
45. Eng. 440 PFW, *English Prose Fiction Workshop for Secondary School Teachers*, June 19 through August 18, see page 24.



## SPECIAL SUMMER SESSION FEATURES

All students planning to register for special summer session features offered for either credit or audit must meet requirements as outlined in this catalog under Registration Information. A permit to register MUST be presented to begin registration during regular registration on June 19-20 or on the first day of the workshop. Students who wish to take courses in addition to a workshop must meet the registration requirements for the regular summer session.

Pre-registration is required for some workshops. Please check the workshop description for details.

### Conference for School Administrators

**Innovations in Curriculum and Methodology, Elementary and Secondary, August 1-August 18, no credit.**

Many school administrators are so deeply involved in daily work that they have little opportunity to keep abreast with innovations in curriculum and methodology—*creativity, individualized study, programmed learning, inquiry training*. As a result they find themselves in positions as problem coordinators rather than in roles of educational leadership.

Central Washington State College is planning a series of two-day

clinics designed to acquaint administrators with the latest developments in a number of curriculum areas. Each clinic will be part of a series but each will be completely independent. An individual may attend any clinic or the entire three-week series. There is a \$3.00 registration fee for each two-day clinic. Rooms will be available to participants at a cost of \$1.25 per night and meals may be purchased at the college dining hall.

Topics to be presented will include:

#### Elementary Level

Special Education  
Social Studies  
Instructional Aids  
Reading  
Physical Education  
Language Arts

#### Secondary Level

Language Arts  
Special Education  
Instructional Aids  
Reading  
Flexible Scheduling  
Staff Utilization

Complete information including schedule of events are available upon request to Dr. Roy F. Ruebel, Department of Education.

### Junior High-Senior High Principals' Conference

**June 26-28, no credit.**

The joint conference for junior high principals and senior high principals is sponsored by the Washington Association of Junior High Principals and the Washington Association of Senior High Principals. The theme of the conference is "Articulation in a Time of Change." Potential sociological changes in American society will be presented and opportunity will be given for principals to discuss the role of education for the future. The conference will emphasize the entire secondary school program, grades 7-12, and will attempt to point out both the necessity and process of articulating this program.

There is a \$5.00 registration fee for the three-day program. For information on registration materials and housing, contact Dr. E. Frank Price, Department of Education, Central Washington State College.

### Aerospace Education Program

The popular aerospace education program will be continued in the 1967 summer quarter. It has been reorganized and expanded making it possible for an individual to take six or eight credits in aerospace education during the first term of the summer session. Because of the



*Architect's Sketch of New Fine and Applied Arts Complex.*



change in program, persons who have participated in previous aerospace education programs at Central may register for the program for credit. The offering will be as follows:

**Ed. 440.3 or Av. 440.3, Workshop, Aviation and Space Education Institute, June 19-July 20, 6 credits.**

This is a one-month program from June 19 through July 20. It will meet continually with only the following days free: June 25; July 1, 2, 3, 4; July 9; and July 16. This workshop is concerned with the impact of aviation and space developments and the implications for education. Because this is a new program previous enrollees in Central's aerospace education programs are among those eligible for enrollment. It will be conducted at McChord Air Force Base.

**Ed. 599C, Seminar in Curriculum (Aerospace Education), June 19-July 20, 2 credits.**

This seminar will meet Tuesdays and Thursdays (except July 4) during the first session. It will be concerned with the curricular implications of the various aerospace activities in all subject fields from kindergarten through secondary school. Emphasis will be placed on the development of units, curriculum guides, instructional materials, and other items of interest to practicing educators. This seminar will be offered at McChord Air Force Base in conjunction with Aviation 440.3 as a unified program. However, either course may be taken separately. Education 599C is open only to persons who have earned a Bachelor's degree.

The leadership for the Aerospace Education Institute will be provided by two Central faculty members who will be serving as co-directors: Miss Althea Adams and Robert H. Benesh. Benesh (Lt. Col. Ret.) is former coordinator, Research and Development Program, Missile and Space Systems Division, Douglas Aircraft Company. Miss Adams formerly served as elementary education consultant for Multnomah County Schools in Oregon, where she gained recognition for her activities in aerospace education. Both have been involved in the direction of previous aerospace education programs for Central Washington State College. They will be assisted by personnel from Central Washington State College detachments of the Air Force R.O.T.C., Civil Air Patrol, school districts throughout Washington and Oregon, aerospace industries, governmental agencies, aviation organizations and other groups.

Orientation and cross-country flights are planned and the enrollees will visit key air force installations, a major aircraft manufacturing plant, and other aviation facilities.

Effective planning of flight and field trip experiences require early information regarding enrollment. Each person must write to the Director of Summer Session or Workshop Directors Benesh or Miss Adams advising of (1) his intention to enroll, (2) the nature of his school assignment, and (3) choice of courses. Further information will be mailed to the applicant. The fees for any of these offerings will follow the pattern described on page 8 in this catalog. There will be additional costs to cover such items as books and materials, field trips, etc.

Students registering for any portion of the Aerospace Program must complete Form # 6, "Workshop or Special Program Application." (See inside back cover.)

### **Business Education Program**

**Bus. Ed. 440FS, Personal and Family Financial Security Workshop, June 21-July 20, 5 credits. Periods 2-3.**

The workshop in Personal and Family Financial Security Education is designed to provide the individual participant with background information in four major areas of value in everyday living as well as in teaching or administration. The area of basic economics will present aspects of our current economy as they effect the individual's financial security, for example, the cost of living index and how interest rates are determined.

The insurance area will provide facts and information relative to most phases and types of insurance with a major emphasis on life, automobile, and socially provided insurance such as Social Security. Discussions in family economics will delve into such areas as planned income and expenditures, credit, income tax, and increasing financial security through better utilization of income.

The area of investments other than insurance will provide information on investments of various types. Credit unions, the operation of the banking system, wills, estate planning, and real estate problems will be studied as they effect our personal and family financial security. In addition to the opportunity to receive such information on financial security, individuals will be expected to develop some type of project either in the form of a teaching unit, resource unit, or some distinct problem facing him for personal solution.

A unique feature of this workshop will be the extensive use of



experienced professional and business consultants from the business world in addition to outstanding educators in specialized fields. Field trips to financial institutions will be conducted and opportunities will be provided for individual consultation in an effort to solve individual problems.

Dr. Eugene Kosy, professor of business education, is the workshop coordinator. The workshop meets daily. One additional hour per day will be scheduled on an arranged basis for project work.

**440WE, Coordination and Work Experience in the Office Occupations, July 24-July 28, 2 credits.**

The Coordination and Work Experience in the Office Occupations Workshop meets daily from 8:00 a.m. until noon and from 1:00 p.m. until 4:00 p.m.

**440BB, Basic Business. July 31-August 4, 2 credits.**

The Basic Business Workshop meets daily from 8:00 a.m. until noon and from 1:00 p.m. until 4:00 p.m.

### Conservation and Outdoor Education Workshop

**Sci. Ed. 440COE, Conservation and Outdoor Education Workshop, June 12-June 24, 5 credits.**

The Conservation and Outdoor Education Workshop consists of a twelve-day session in which the major areas of conservation and resource-use are studied through integrated discussion and field study. Students who have previously earned no more than 3 credits in Sci. Ed. 440COE or the equivalent may return and earn an additional 5 credits in this integrated session.

The workshop will have a short week-end recess at the mid-point of the session. The workshop location is Hidden Valley Ranch (about 23 miles from Ellensburg near Blewett Pass). The session is conducted in cooperation with various government and private agencies. Interested organizations, industries and agencies contribute both instruction and scholarship subsidy for the workshop. For those wishing to register for on-campus second session courses, pre-registration must be completed prior to June 1 through the Office of the Registrar.

The purpose of the workshop is to enable teachers, administrators, and interested community leaders (1) to study natural resources; (2) to discover the values of living and working together in outdoor education

programs; (3) to experience the recreational opportunities connected with outdoor education; and (4) to acquire the knowledge, understanding, and skills involved in the operation of school camps.

Workshop participants will have the opportunity of making a first-hand study of a selected group of natural resources under the direction of skilled leaders drawn from governmental agencies, industry, agriculture, voluntary organizations, public schools and colleges. The possible resources available for investigation include the following: forests, timber, wildlife, minerals, soils, fossils, crops, reclamation projects, irrigation and power potentials. Students will become acquainted with a wealth of instructional material concerned with resource-use and outdoor education in the forms of films, slides, books, pamphlets, and other teaching aids. Trips will be made in busses and in private autos from Hidden Valley Ranch to the locations where various resources and projects can be studied most effectively.

Pre-registration\* is required.

*For pre-registration information, write the workshop director, Prof. Janet Lowe, or the Director of Summer Session.*

### Cost of Program

Course Fee .....	\$60.00
Food and Lodging (12-day period) .....	\$95.00

### Education Program

**Sp. Ed. 440AS, Administration and Supervision of Special Education Programs, August 7-August 18, 3 credits. Periods 2, 3, 4, 6, 7.**

This workshop is especially designed for administrators, directors, and coordinators of special education programs, but would be useful for any teachers in the special education field. Dr. Ernest Willenberg, director of special education in Los Angeles, will be the workshop director. He is a leading authority on organization and administration of special education. *Pre-registration is necessary.* For information on the workshop, contact Dr. Dohn Miller, Education Department, Central Washington State College. Applicants must complete Form #6, "Workshop or Special Program Application." (See inside back cover.)

\*Note: Sci. Ed. 440COE pre-registration is a separate procedure from regular summer session pre-registration. Students wishing to register for the C.O.E. Workshop must complete form #6 "Workshop or Special Program Application." (See inside back cover.)

Ed. 440CCI (Illahee), **Camping for Crippled Children Workshop** July 30-August 12, 4 credits.

Ed. 440CCB (Bonneville), **Camping for Crippled Children Workshop**, July 30-August 19, 6 credits.

Permission to enroll must be secured from the Director, Dr. Dohn A. Miller, associate professor of education at Central.

This course provides professional laboratory experiences in working with crippled children through camping in a residence camp setting. It offers the counselor an opportunity to live with, work with, teach, counsel, and enjoy crippled children in a recreational camp atmosphere. Students enrolled in this course will act as camp counselors for small groups of crippled children in living groups and will lead special activities for the entire camp, thus learning to apply some of the techniques and understanding gained in the 440CCCh Workshop. Camp Illahee, one of the sites for this workshop, is located 32 miles northwest of Ellensburg, on the Teanaway River. Camp Bonneville, located in Clark County, will also be under the supervision of Central Washington State College. The close association of students with crippled children is most beneficial to any teacher of special education or student of recreation. This camping program is sponsored by Central Washington State College and the Washington Society for Crippled Children and Adults.

Ed. 440 CFL or H. Ec. 440 CFL, **Content in Family Life Education Workshop**, July 24-August 4, 3 credits. Periods 2, 3, 4, 6, 7.

This workshop will deal with the development of content in family life as it relates to the inter-personal association, intra-family associations, and movement towards marriage. The utilization of inter-personal relations as a framework for decision-making in premarital associations and family living will be stressed.

The workshop is designed for classroom teachers, guidance and counseling personnel, school administrators, educational supervisors, curriculum directors, church school leaders, parents, and others interested in working with youth.

It is directed by Dr. Luther Baker, assistant professor of family life at Central, author, researcher, and lecturer in marriage and family life education. The workshop meets daily from 9:00 a.m. to noon and from 1:00 p.m. to 3:00 p.m.

Central Washington State College students may substitute this workshop for Education 433 or Home Economics 433.

Ed. 440 CCh, **The Crippled Child Workshop**, July 23-July 28, 2 credits. Periods 2-4 and 6-8.

Permission to enroll must be secured from the director, Dr. Dohn A. Miller, associate professor of education at Central. This workshop is designed to acquaint teachers and the prospective counselors for the Crippled Children's Camp with the characteristics and problems of the crippled child. Professional consultants, active in the treatment, counseling, therapy, education, and recreation for the handicapped child, discuss and explain their activities and experiences with the crippled child. Consultants such as nurses, a physical therapist, an orthopedic surgeon, school psychologists, and an occupational therapist provide the varied approaches to working with the crippled child. Afternoon sessions may be devoted to practical activity projects in music, dramatics, games, crafts, and camping skills adaptable to the classroom as well as to the camp setting. Dr. Miller, will direct the workshop which is jointly sponsored by the college and the Washington Society for Crippled Children and Adults. **THIS COURSE IS A PREREQUISITE FOR EDUCATION 440 CCI AND CCB, CAMPING FOR CRIPPLED CHILDREN.** The workshop participants will meet for 5 days daily. There will also be one evening meeting required for the workshop.

Ed. 440 DP, **Data Processing for Educators Workshop**, June 26 - June 30, 1 credit. Periods 2-4.

This workshop is designed for administrators, supervisors, counselors, business officials, and interested teachers. It will deal with the potential of data processing as applied to educational problems and situations. No prior knowledge of data processing will be expected of the participants. Robert Kellman will be coordinator of this workshop. The group will be instructed in the basic potential of all data processing equipment and also will share various ways in which data processing is currently being used by educators. For further information, contact Dr. E. Frank Price, Department of Education. Students wishing to register for Data Processing for Educators Workshop must complete Form #6, "Workshop or Special Program Application." (See inside back cover.)

Ed. 440 IT, **Inquiry Training Workshop**, July 24-August 17, 3 credits. Periods 5-7.

This workshop is designed primarily for classroom teachers in both elementary and secondary schools. It will deal with the art and act of

asking questions. Emphasis will be placed on the oral question as an instructional instrument. Participants will have an opportunity to become well acquainted with the research related to inquiry so that they may become more conversant with the theory and practice.

The workshop will be coordinated by Dr. Alan Bergstrom, assistant professor of education at Central. Applicants must complete Form #6 "Workshop or Special Program Application." (See inside back cover.)

**Ed. 440 PT, Play Therapy, June 21-July 12, 3 credits. Periods 2-4.**

This workshop meets daily. A study will be made of the possible origins, manifestations, and effects of emotional disturbances in children. Limited research, individual conferences, wide reading, reports, live observation of children, and the presentation of case studies will be used to meet the special interests and needs of the enrollees. The adaptation and application of the basic principles of play therapy in the schools will receive major attention. The psychological and philosophical implications of play therapy will be stressed. The director of the workshop will be Mrs. Sue Sheridan. Mrs. Sheridan has a master's degree in special education from the University of Oregon, where she was closely involved in various programs in which both maladjusted, retarded, and normal children participated.

**Ed. 440 PW, Professional Writing for Educators Workshop, June 21-July 20, 2 credits. Periods 6, 7.**

This workshop is designed for public school teachers and administrators who wish to develop skill in the writing and publication of curriculum materials and/or other educational matter. It is intended to provide experience in several literary forms: The children's article, science, and social studies materials, and the professional journal article. A discussion of suitable ideas and their sources make up the bulk of the classroom sessions. The workshop goal will be the finished manuscript ready for classroom use or ready to be submitted for publication. The workshop will meet daily. Enrollees must have taught for at least one year. Joseph Junell, assistant professor of education at Central, will be the instructor.

**Ed. 599A, Seminar in Educational Administration, June 21-July 20, 3 credits. Period 5.**

Dr. Lloyd Gabriel, assistant professor of education at Central, will lead the seminar in discussion of secondary scheduling and curriculum. Flex-

ible scheduling will be studied along with team teaching and other alternatives in staff utilization. The course is especially appropriate for those planning to enter secondary school administration.

## English Program

**Eng. 440 LVW, Literary Values Workshop, June 19-July 20, 4 credits. Periods 3-4.**

This workshop is designed to give the teacher, the prospective teacher, and the student of literature the opportunity to study relative values in literary works and the attempts at censoring them. The study will aim at all levels of literature from grade school to college. The course will be team-taught by John L. Vifian, assistant professor of English at Central, and Keith Wright, curriculum coordinator of English Language Arts at Yakima (Wash.) secondary schools. Educators who have been involved in censorship cases will be brought in. The course will meet twice a day for the first four weeks of summer school. Enrollment is limited to 35 students.

**Eng. 440EPW, Poetry for Secondary School Teachers, June 19-August 18, 4 credits. Period 3.**

This workshop is designed to give experienced and prospective teachers a study of poetry on the adult level and to suggest approaches to poetry appropriate to the secondary school.

The workshop is scheduled as a regular class, through the nine weeks of summer session, meeting four days a week, an hour each day. It will be team-taught by James U. Mauch, instructor in English at Foothill College, Los Altos Hills, Calif., and Miss Marion Klobucher, chairman of the English department, Ellensburg (Wash.) High School. Enrollment is limited to 35 students.

**Eng. 440PFW, Prose Fiction for Secondary School Teachers, June 19-August 18, 4 credits. Periods 6-7.**

This workshop is designed to give experienced and prospective teachers study of prose fiction and to suggest approaches to prose fiction appropriate to the secondary school.

The workshop is scheduled as a regular class through the nine weeks of summer session, meeting four days a week. The workshop will be taught by Dr. Lyman B. Hagen, assistant professor of humanities, Oregon College of Education, Monmouth. Enrollment is limited to 35 students.



### Home Economics Program

H. Ec. 440C, Creativity, June 21-July 5, 3 credits. Periods 2-6.

The Creativity Workshop is designed to cover the topic broadly. Guest speakers will provide some of the most current thinking in the field. The survey of literature and concentration on the creative activity itself and its educational environment is aimed at an understanding for self-development and its application to any field of endeavor.

Mrs. Louise A. Tobin, associate professor of home economics at Central, will be the instructor.

H. Ec. 440 C&D, Construction and Design of Costumes, June 21-July 20, 3 credits. Periods 5-7.

This course will deal with the techniques of stage costume construction. Basic information on designing and construction, with practical problems worked out on half-size models, will provide a realistic and practical background for the classroom teacher or drama major. Readings and lectures which include historical aspects will supplement the laboratory experiences. Knowledge of sewing is not required.

Mrs. Althera Hartley, Language Arts and Homes Economics teacher at Isaac Stevens Junior High in Pasco, Wash., will be the instructor.

H.Ec. 440 CENE, Curriculum Enrichment in Nursery Education June 21-July 20, 3 credits. Period 6.

Designed for pre-school teachers and interested undergraduate students in home economics or elementary education, this workshop will deal with the development of an appreciation for the role of play in the learning processes of pre-school children. Appropriate equipment and materials as well as the techniques of relating literature, art, music, and science activities to the interests of pre-school children will be considered. Directed observation of the laboratory nursery school will be part of the workshop.

Fran Bovos, assistant professor of home economics and child development specialist, will direct the workshop. Sessions will be conducted daily.

H.Ec. 440 CFL or Ed. 440 CFL—See Ed. 440 CFL, Content in Family Life Education Workshop, page 23.

H.Ec. 440 LE, Living Environment, July 21-August 18, 3 credits. Periods 2-6.

A workshop developed to study the living environment of the individ-

ual and the family in urban and rural areas. The course will include field trips, surveys, and investigation of the local and metropolitan areas.

H. Ec. 440EHE, Evaluation in Home Economics, July 6-July 19, 3 credits. Periods 2-6.

Basic principles of evaluation applied to Home Economics Program and Curriculum. Construction and use of evaluation instruments.

### Innovations in Reading Workshop

Ed. 440 IR, Innovations in Reading Workshop. Periods 5, 6, 7 daily.

- (1) June 21-June 27—Teaching Reading with the I.T.A.
- (2) June 28-July 5—Teaching Reading with Words in Color
- (3) July 6-July 12—The Linguistics Approach to Reading
- (4) July 13-July 19—Language Experience Approach to Reading

Students may enroll for any or all of the one-week sessions. One credit will be given for each one-week session. A prerequisite is Education 322 (The Teaching of Reading) or its equivalent.

The workshop is designed for elementary school teachers who are interested in reading instruction and for reading supervisors. Instruction will be given that will cover the theory, materials, and applications in the classroom of the several innovations in reading. Students will have an opportunity to make and collect graphic materials that will enhance teaching of reading. It will be coordinated by Dr. Alan Bergstrom, assistant professor of education at Central.

Applicants must complete Form #6, "Workshop or Special Program Application." (See inside back cover.)

### Montessori Training Program for Graduate Students

This program is designed to provide training in the Montessori approach to education for interested professionals as it applies to the current American social situation. The study of related modern research is part of the program. Directed observations of a demonstration classroom is included in the summer training.

In Montessori education the child learns by exploration and guided discovery, using specialized materials developed in years of extensive empirical research. Starting with the child when he is about three years

old, his natural drives to acquire certain skills and understandings at certain developmental stages are utilized. The Montessori "directress" is a child-study specialist trained in developing continuously a "prepared environment" and in the utilization of specialized learning materials. There is a unique freedom to learn. Children acquire many skills earlier than usual, while at the same time they gain a respect for others and a definite sense of responsibility.

The total Montessori training program for graduate students consists of five courses, each carrying three quarter hour credits. The first four courses are offered during the summer session. The fifth course is individual study during practical Montessori education experience. Successful completion of the first four courses or their equivalent is required before recommendation for the practical experience will be made. The training program will be of particular interest for nursery school, kindergarten, and primary level teachers, as well as for school personnel working with culturally disadvantaged or special education children.

The courses will also provide opportunity for other professionals to study the Montessori approach as it applies to the current social situation. In addition, the program shall encourage the continuation of evaluative and research studies at Central Washington State College as a major institution for the training of teachers and other school personnel.

The program's courses can be an essential part of the elective portion of the student's fifth year or M.Ed. Program. They could be particularly relevant within the existing M. Ed. specializations of Master Teacher and Special Education. Details of the requirements for the M. Ed. degree are listed in the current Central Washington State College *Graduate Catalog*.

*Enrollment in the Montessori training program is limited and preregistration for all or part of the program is required.* Interested persons should write to the program director, Dr. T. F. Naumann, professor of psychology, Central Washington State College.

Dr. Naumann has had extensive research and teaching experience in child psychology and special education and has studied Montessori schools in the U.S.A. and several European countries. His consultation services have been requested by professionals across the U.S.A. and Europe. Co-director of the program will be Mrs. Bobbie N. Parson, M.Ed., who holds the Montessori Diploma and has had several years of experience in Montessori education and research with normal, handi-

capped, and underprivileged American children. Mrs. Parson will direct the demonstration class and will be the instructor for the two seminars on applied Montessori education.

The first two courses will be offered concurrently during the initial 4½ weeks of the Central Washington State College summer session, while the third and fourth courses will be taught concurrently during the second 4½ weeks. *Interested students must enroll for all the courses they want at the beginning of the summer session.* For the fifth course students need to confer with Dr. Naumann.

### *First Half of Summer Session*

Ed. 440 ME, Introduction to Montessori Education, June 19-July 20, 3 credits. Periods 2-3.

This course deals with the historical background, the underlying philosophy and psychology of Montessori education, and their relevancy to the American social situation. Students are introduced to the content to Montessori education, the characteristics of the didactic materials, prepared learning environment, and the role of the Montessori teacher. Visits to a Montessori classroom will be made and discussed. Students will learn about the purpose and organization of the personal Montessori handbook. Dr. Naumann will instruct the workshop.

Ed. 499, Seminar in Applied Montessori Education I (Prerequisite: Ed. 440 ME or equivalent or concurrent enrollment in Ed. 440 ME.), June 19-July 20, 3 credits. Period 6.

Psychological and educational meaning of the exercises of practical life and of sensorial training; relevant didactic apparatus; developing the personal Montessori handbook; studying children in a Montessori class; planning for the prepared learning environment; writing specific lessons for practical life exercises and sensorial training; presenting lessons to individual children. Mrs. Bobbie Parsons will be the instructor. The seminar will meet daily.

### *Second Half of Summer Session*

Ed. 499, Seminar in Applied Montessori II (Prerequisite: Applied Montessori Education I or Equivalent.), July 21-August 18, 3 credits. Period 6.

Meaning and use of Montessori apparatus related to cognitive or academic skill areas, especially in mathematics and language skills; writing specific lessons in these areas; presenting lessons to individual children; continuing work on the personal Montessori handbook; making some didactic materials. Mrs. Bobbie Parsons will be the instructor. The class will meet daily.



**Psy. 499, Seminar in Modern Research and Montessori Education, July 21-August 18, 3 credits. Period 7.**

Theories and research in child development, human learning, and creativity, and their relevancy to Montessori education; practical designs for studying Montessori children and their learning situation; Montessori education and modern educational techniques, such as learner-controlled instruction and programmed learning. Dr. Naumann will instruct the seminar which will meet daily.

Introduction to Montessori Education *or* equivalent is a prerequisite.

**Ed. 596, Individual Study, 3 credits.**

Individual study in the Montessori training program is available with the consent of Dr. Naumann, who will be the instructor.

### Music Program

**Music 440E, Elementary Music Education, June 26-July 7, 3 credits. Periods 2, 3, 4, 6, 7.**

Two full weeks of concentrated study highlighting recent teaching techniques and methods now in use in the United States. It will include the development of music understanding and skills for classroom teachers, elementary school music teachers, music consultants, specialists, and supervisors.

Director of the Elementary Music Workshop will be Miss Sterling Price, specialist in elementary music education at Central. Miss Price came to Central the fall of 1966 from Hagerstown, Maryland where she was Elementary Music Specialist with the Hagerstown TV Center. She served previously in the capacity of guest professor at Clarion State College, Pennsylvania, at the University of Southwestern Louisiana, Lafayette, and at Escuela Americana, San Salvador, El Salvador. She has taught on all grade levels, was supervisor of music in Paducah, Kentucky, and for several years was co-ordinator of elementary music at the University of Illinois. While at Illinois, she instigated the use of class piano for elementary music majors.

The workshop will meet four hours daily for two weeks. Room and board in college residence halls may be secured by writing Director of Auxiliary Services, CWSC by May 15.

**Music 561, Opera Workshop, June 19-July 20, 2 credits. Period 8.**

The Opera Workshop is scheduled as a regular class in the first half of the summer session and may be taken with other classes. It will be conducted by John DeMerchant, veteran opera and concert singer. He has been leading baritone with the Boston, New York, and other opera companies. Soloist with the New York Philharmonic, Toronto Sym-

phony, Radio City Music Hall, and appearances as a dramatic actor attest to his background in theater and music.

The workshop will offer experience in singing and directing with the accent on opera as an educational resource. For singers and actors.

**Music 440C, Choral Workshop, July 17-July 21, 2 credits. 9:00 a.m.-noon, 1:30-4:00 p.m.**

Five days devoted to all facets of the choral program. Reading sessions will be scheduled from 9 a.m. to 12 noon, and 1:30 p.m. to 4:00 p.m. Lorris West of Johnson-West Music Service, Seattle, will furnish the choral materials and will assist in their presentation. SSA, SAT, TTBB, and SATB numbers will be performed. Regular members of the music staff will assist in the workshop. It may be taken with or without credit. Room and board applications should be made by May 15 to Director of Auxiliary Services, Central Washington State College.

**Music 440P, Percussion Workshop, July 31-August 11, 3 credits. Periods 2, 3, 4, 6, 7.**

This will be the third time that Brad Spinney, one of America's leading percussionists, will offer a workshop at CWSC in the basic rudiments of percussion instruments. Spinney plays all the instruments of the percussion section expertly. He teaches regularly at New York University and is in demand throughout the United States for clinics and workshops. He spent the summer of 1966 at the University of Michigan. He is the author of many articles and books on percussion—the most notable publication being his 33 volume encyclopedia on percussion instruments.

By advance permission from the head of the music department, high school students may participate without credit. Room and board applications should be made by May 15 to the Director of Auxiliary Services, Central Washington State College.

### NDEA Institutes in Civics and Foreign

#### Language Supervision

These institutes are conducted under Title XI of the National Defense Education Act of 1958, as amended.

The NDEA financially supports these institutes by awarding grants to the sponsoring colleges and universities to cover all direct and indirect costs and by awarding stipends to all institute participants. Interested students should write the specific institute director for application:

*NDEA Institute in Foreign Language Supervision, Lester McKim, Director.*

*NDEA Institute in Civics, Dr. Robert Yee, Director.*

### Southeast Asian Institute (NDEA Civics)

June 26 - August 4, 7 credits.

This institute will provide training to improve the qualifications of teachers teaching contemporary problems, world history, geography, etc., as related to Southeast Asian affairs. Each enrollee must participate in the entire institute program. Under advisement, some or all of the credits may be used to fulfill departmental major requirements in Geography, or Political Science.

<i>Program</i>	<i>Quarter Hour Credits</i>
Anthropology 484, Ethnology and Cultural Problems of Southeast Asia . . . . .	2
Geography 484, Geography of Southeast Asia . . . . .	2
Political Science 484, Government and Politics of Southeast Asia . . . . .	2
Social Science 440 (Workshop on Audiovisual Materials) . . . . .	1

The institute will accommodate thirty (30) enrollees from the United States and its possessions. Each applicant must make formal application. Acceptance is based on the following:

- (1) Have a Bachelor's degree with an undergraduate major in political science, history, geography, or other appropriate major;
- (2) Have taught at least one year within grade levels 9-12;
- (3) Be certified by the appropriate public school administrator as presently employed in teaching social studies, history, or geography within grade levels 9-12;
- (4) Strength of two letters of recommendation, including one from his/her immediate supervisor; and
- (5) The degree to which the applicant's reasons for wanting to attend the institute seem capable of being met by the objectives of the institute.

Since the institute is authorized by the U. S. Office of Education, \$75.00 a week stipends (plus allowance for dependents) will be given to all applicants selected. *Deadline for application is March 20.*

### Institute in Foreign Language Supervision (NDEA)

Foreign Language 440AFLP, Administration of Foreign Language Problems, June 26-August 11, 12 credits.

This is the second year the Office of Education has approved an institute for foreign language supervisors and foreign language depart-

ment chairmen and is the only one of its kind approved for 1967. The purpose of the institute is to strengthen the foreign language teaching profession through development of more effective leadership.

There will be forty-five participants. They may come from any part of the United States if they meet the requirements:

- (1) Currently employed as a state or regional supervisor, a city supervisor, or as a foreign language department chairman;
- (2) At least five years foreign language teaching experience;
- (3) At least one year of foreign language supervisory experience;
- (4) Evidence of good or better proficiency in French or Spanish;
- (5) Evidence of potential for real professional growth.

The six-man institute staff represents many years of foreign language teaching and supervisory experience at several academic levels and in several geographical areas. Each will present a short series of lectures in areas of special interest and competence, but their main responsibility will be to work with individual participants to insure that each one receives the training which will be most beneficial to him.

Their work will be supplemented by a series of lectures from five outstanding authorities in specialized fields related to foreign language teaching and supervision.

The emphasis throughout the institute will be on large and small group discussions, individual and group projects, and other activities designed to stimulate professional growth. Two materials centers will give participants access to pertinent publications and teaching materials. *Deadline for application is March 20.*

### Physical Education Program

Phys. Ed. 440 RhI, Rhythms for Intermediate Grades Workshop, June 21-July 20, 3 credits. Periods 1-2.

This workshop is designed to give the classroom teacher, supervisor, and administrator a working confidence in rhythmic activities for the intermediate grades. Special attention will be given to creative development and expression through locomotor and non-locomotor movements, dramatization, creative rhythmic, singing games, traditional dance skills, folk dances and social dance.

The workshop will be conducted by Janice Boyungs, instructor in physical education at Central. The workshop will meet daily for participation and lecture.

Phys. Ed. 440TF, Track and Field Workshop, June 21-July 20, 3 credits. Periods 3-4.

This workshop is designed for those who are interested in furthering

women's track and field. The workshop will be concerned with training, practice schedules, and the finer coaching points of individual events. It will also include organization and administration of track and field meets and will deal with public relations necessary to enhance the program.

Miss Dorothy Purser, assistant professor of physical education at Central who coaches women's athletics, will be the instructor. The workshop will meet daily.

**Phys. Ed. 440W, Wrestling Workshop, June 21-July 20, 3 credits. Periods 1-2.**

This workshop is designed to acquaint the teacher with the essential fundamental wrestling maneuvers involved in teaching wrestling at both the junior high and senior high school levels. Consideration will be given to various phases of the program such as: organization, equipment, training and conditioning, etc. This course should be especially valuable to the physical education teacher who is interested in adding wrestling to his program but is inexperienced. It should also be valuable to any teacher interested in the coaching of wrestling at either the junior high or senior high level. The workshop has been established with the beginning coach in mind, however, it can be of value to the experienced coach.

The four and one-half week workshop will be conducted by Eric Beardsley, assistant professor of physical education and wrestling coach at Central. It meets daily.

### **PROGRAM IN REMEDIAL READING**

Opportunities will be available in three locations for work in remedial reading. These courses will count as residence credit. Other course work may be taken during the second term in accordance with the standard fee structure of the college. Applicants must have proof of recent teaching experience and regular certification for admittance to the program. Interested students must pre-register by May 15. Applicants must complete Form #6, "Workshop or Special Program Application." (See inside back cover.)

#### **ELLENSBURG**

Sp. Ed. 428, Remedial Reading, 3 credits

Sp. Ed. 483, Practicum in Remedial Education, 3-9 credits, June 21-July 20, 7:30 a.m.-noon and arr.

Coordinator for the Ellensburg program will be Bill Harrison. The meeting place is to be announced. Housing arrangements may be made by contacting the Director of Auxiliary Services, Central

Washington State College. For further information contact the Director of Summer Session.

#### **BELLEVUE**

Sp. Ed. 428, Remedial Reading, 3 credits.

Sp. Ed. 483, Practicum in Remedial Education, 3-9 credits, June 12 - July 7, 8:00 a.m. - 3:00 p.m.

Coordinator for the Bellevue program will be Maxine Van Nostrand. Classes will be held in the Phantom Lake Elementary School, 1050 - 160th S. E., Bellevue, Wash. These courses must be taken as a unit experience in Bellevue. A student may not enroll in a portion of the program. For further information contact Maxine Van Nostrand, Bellevue Public Schools, Bellevue, Wash. Housing arrangements must be made individually.

#### **HIGHLINE**

Sp. Ed. 428, Remedial Reading, 3 credits.

Sp. Ed. 483, Practicum in Remedial Education, 3-9 credits, June 19-July 14, 8:00 a.m.-noon, 1:00 p.m.-3:00 p.m.

Coordinator for the Highline program will be Bill Beard. The meeting place is to be announced. Housing arrangements may be made by the individual student. For further information, write Bill Beard, Highline Public Schools, Seattle, Wash.

### **SPEECH AND DRAMA PROGRAM**

**Sp. 440, Workshop in Childhood Language Problems, June 19-July 20, 6 credits.**

This workshop will emphasize three separate, but related, areas: (1) normal language development of children, (2) language problems of preschool children, (3) language problems of school age children. The workshop is designed to be of value to the special education teacher, regular classroom teacher, the working speech therapist, and the advanced student in speech pathology.

Methods of evaluation and testing, and of therapy will be covered. The latter will include therapy for various age groups and for language problems associated with various causalities, including childhood aphasia and environmental deprivation. Demonstrations of actual cases will be used. The workshop meets daily from 8:00 until noon.

Dr. Katherine Snow Egan, associate professor of speech pathology and audiology at Central, will be director of the workshop. Dr. Egan has had extensive clinical experience with children with language problems and has also done research in this area.



Sp. 440CD, Creative Dramatics Workshop, June 19-July 20, 6 credits.

The Creative Dramatics Workshop is designed to acquaint teachers and recreation leaders with the philosophy, methods, and materials of creative dramatics at kindergarten, primary, intermediate, and junior high levels. Participants may gain understanding of creative dramatics and will develop insight into the leader's role and basic guidance techniques. They will dramatize selected materials, observe children creating drama at the Hebel Elementary School, and guide dramatizations as they work out projects.

Mrs. Hazel Dunnington, assistant professor of speech and drama at Central, will direct the workshop. She has had experience with creative dramatics at the University of Washington, Northwestern University, San Jose State College, University of Toledo, and Central Washington State College. She is co-editor of *Children's Theatre and Creative Dramatics* (University of Washington Press, 1961).

The workshop will meet daily from 12:30 to 4:30 during the first term.

### Hebel Elementary School

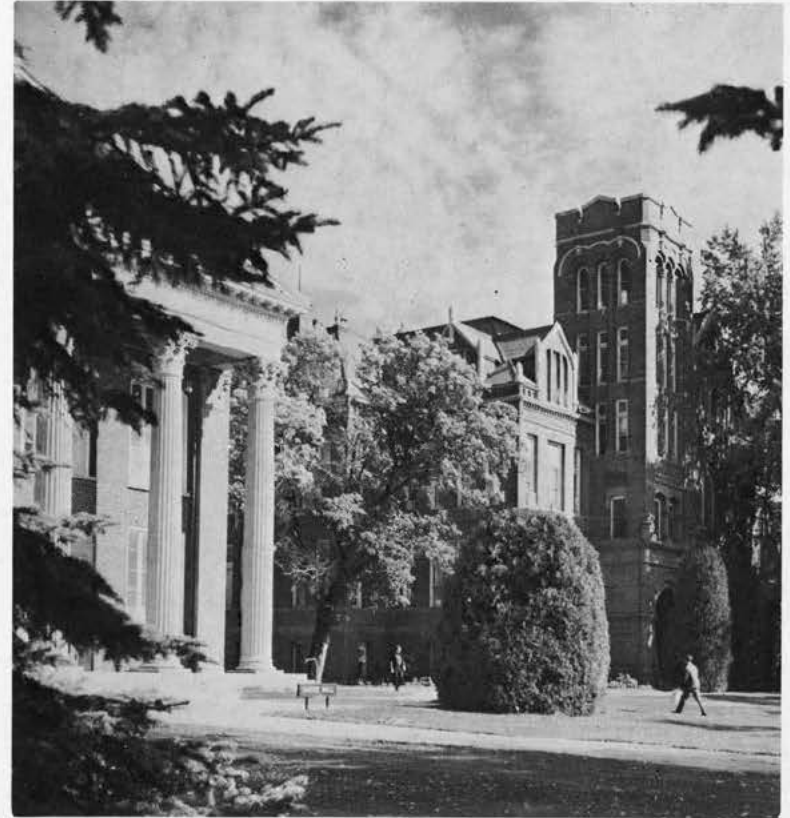
Hebel Elementary School, the campus school, will be in session June 21 to July 20, from 9:00 a.m. to noon except kindergarten (9:00-11:00 a.m.) Classroom groups will include continuing pupils in kindergarten, grades one through six, remedial reading, core curriculum, and a Montessori Workshop. The regular summer program is an extension and enrichment of the yearly school program, with special focus on creativity, critical thinking, and individualizing instruction through team teaching.

*Remedial Reading Class.* One classroom of the Hebel Elementary School will feature a remedial reading program. Enrollment will be limited to twelve pupils. Selection of the children to be enrolled will be made from those entering grades four through eight. Applications for enrollment should be accompanied with recent standardized test data relating to the child's reading ability and intelligence.

*Enrollment of Children.* To enroll children in any classroom in the Hebel Elementary School, application must be made in advance to Dr. William Gaskell, director, Hebel Elementary School, Central Washington State College, Ellensburg, Wash. Because enrollment is

limited, applications should be made in the Hebel Elementary Office before April 15.

*Student Teaching.* A limited number of experienced teachers will be assigned to Education 442, Student Teaching, 5 credits; Education 546, Advanced Laboratory Experience, 3 credits; or Education 443, Student Teaching in a Remedial Class, 5 credits. Application for teaching must be made to the Director of Student Teaching prior to May 1. Education 338, Remedial Reading, is a prerequisite to Student Teaching in a Remedial Class, or it may be taken concurrently with Student Teaching.



Smyser and Barge Halls

# SUMMER OFFERINGS, 1967

## ANTHROPOLOGY

### Full Session

D.P. Course No.	Dept. Course No.	Course Title	Credits	Place	Period	Day	Instructor
3001	107	General Anthropology	4	C-105	4	MTWTh	CCD
3002	141	Cult. Anthropology	4	C-106	3	MTWTh	ASD
3003	447	Rel. Prim. Soc.	4	C-106	2	MTWTh	CCD

## ART

### Full Session

D.P. Course No.	Dept. Course No.	Course Title	Credits	Place	Period	Day	Instructor
3004	100	Introduction to Art	3	A-405	8	MWF	EFB
3005	150	Drawing	3	A-400	8-9	MWF	DPT
3007	250	Drawing	3	A-400	8-9	MWF	DPT
3008	260	Oil Painting	3	A-105	8-9	MWF	EMS
3009	261	Oil Painting	3	A-105	8-9	MWF	EMS
3014	280	Sculpture	3	Prefab	6-7	MWF	CJP
3015	281	Sculpture	3	Prefab	6-7	MWF	CJP
3016	285	Print Making	3	A-406	1-2	MWF	JJA
3023	360	Oil Painting	3	A-105	8-9	MWF	EMS
3027	380	Sculpture	3	Prefab	1-2	MWF	CJP
3029	386	Collography	3	A-406	1-2	MWF	JJA
3043	460	Adv. Painting	3	A-105	6-7	MWF	EMS
3787	480	Adv. Sculpture	3	Prefab	1-2	MWF	CJP
3046	486	Adv. Collography	3	A-406	1-2	MWF	JJA
	496	Individual Study	2			Arr.	S
	497	Individual Study	2			Arr.	S
	498	Individual Study	2			Arr.	S
3050	560	Adv. Studies in Painting	3	A-105	6-7	MWF	EMS
3051	560	Adv. Studies in Painting	5	A-105	6-7	Daily	EMS
3054	580	Adv. Studies in Painting	3	Prefab	1-2	MWF	CJP
3055	580	Adv. Studies in Painting	5	Prefab	1-2	Daily	CJP
3056	580	Relief Print	2	A-406	1	MW	JJA
	596	Individual Study	2			Arr.	S
	597	Individual Study	2			Arr.	S
	598	Individual Study	2			Arr.	S
3061	600	Thesis	6			Arr.	S

### First Term

D.P. Course No.	Dept. Course No.	Course Title	Credits	Place	Period	Day	Instructor
1012	270	Design	3	A-400	6-7	Daily	JJA
1013	277	Lettering	3	A-409	6-7	Daily	RWR
1017	287	Intaglio Printmaking	3	A-406	6-7	Daily	MMS
1018	290	Photography	3	I-202	3-4	Daily	JMS
1020	342	Exhibit Techniques	2	A-300	2	MTWTh	LW
1021	348	Ancient and Medieval Art.	3	A-408	1	Daily	LW
1026	377	Adv. Lettering	2	A-409	6-7	MTWTh	RWR
1030	387	Adv. Intaglio Printmaking	3	A-406	6-7	Daily	MMS
1031	390	Photography	3	A-202	6-7	Daily	JMS
1032	425	Arts and Crafts, Intermediate	3	A-409	1-2	MWF	RTD
1034	430	Art in Elem. School	3	A-409	3-4	MWF	EFB
1036	432	Art in the High School	3	A-408	2	Daily	EFB
1038	450	Adv. Drawing	3	A-400	3-4	Daily	MMS
1039	451	Contemporary Art	3	A-408	6	Daily	LW
1040	453	Art in U. S.	3	A-408	4	Daily	RTD
1042	458	Life Drawing	2	A-400	3-4	MTWTh	MMS
1044	470	Adv. Design	3	A-300	3-4	Daily	RWR
1047	490	Adv. Photography	3	I-202	6-7	Daily	JMS
	496	Individual Study	1			Arr.	S
	497	Individual Study	1			Arr.	S

## ART—Continued

### First Term

D.P. Course No.	Dept. Course No.	Course Title	Credits	Place	Period	Day	Instructor
	498	Individual Study	1			Arr.	S
1049	550	Adv. Life Drawing	3	A-400	3-4	Daily	MMS
1052	564	Research Procedures in Art	3	A-408	7	Daily	LAK
1053	570	Adv. Studies in Design	3	A-300	3-4	Daily	RWR
1057	587	Adv. Studies—Intaglio	3	A-406	6-7	Daily	MMS
	596	Individual Study	1			Arr.	S
	597	Individual Study	1			Arr.	S
	598	Individual Study	1			Arr.	S
1059	600	Thesis	6			Arr.	S

### Second Term

D.P. Course No.	Dept. Course No.	Course Title	Credits	Place	Period	Day	Instructor
2006	170	Design	3	A-300	3-4	Daily	RTD
2010	262	Water Color	3	Q-311	6-7	Daily	JJA
2011	263	Water Color	3	Q-311	6-7	Daily	JJA
2019	325	Arts and Crafts, Primary	3	A-409	3-4	MWF	LAK
2022	349	Art and Modern Living	2	A-405	2	MTWTh	EFB
2024	362	Adv. Water Color	3	Q-311	6-7	Daily	JJA
2025	363	Adv. Water Color	3	Q-311	6-7	Daily	JJA
2028	385	Serigraphy	3	A-300	6-7	Daily	RWR
2033	425	Arts and Crafts, Intermediate	3	A-300	1-2	MWF	RWR
2035	430	Arts and Crafts, Intermediate	3	A-409	6-7	MWF	EFB
2037	448	Art in Elem. School	3	A-408	2	Daily	RTD
2041	457	African and Oceanic Art	2	A-408	6	MTWTh	ECH
2045	485	Adv. Serigraphy	3	A-300	6-7	Daily	RWR
	496	Individual Study	1			Arr.	S
	497	Individual Study	1			Arr.	S
	498	Individual Study	1			Arr.	S
2048	548	Art Since 1945	3	A-408	3	Daily	ECH
	596	Individual Study	1			Arr.	S
	597	Individual Study	1			Arr.	S
	598	Individual Study	1			Arr.	S
2058	599	Seminar in Art Education	2	A-409	8	MTWTh	RTD
2060	600	Thesis	6			Arr	S

## AVIATION

### Workshops

D.P. Course No.	Dept. Course No.	Course Title	Credits	Place	Period	Day	Instructor
62	440.3	Aviation and Space Education	6	McChord	2	Daily	AEA

See Education 599 C.

## BIOLOGICAL SCIENCE

### Full Session

D.P. Course No.	Dept. Course No.	Course Title	Credits	Place	Period	Day	Instructor
3085	102	General Biology	3	S-100	2	MWF	GWC
3086	103	Biology Lab	2	S-106	2-3	MW	PCD
3087	347	Paleontology	5	S-103	4	Daily	EPK
3088	365	Genetics	4	S-100	5	MWF	WWB
	365L	and Lab.	3	S-105	1-2	M	WWB
3089	370	Microbiology	5	S-105	3	TTh	VPH
	370L	and Lab.	3	S-105	3-4	MWF	VPH
3090	470	Ecology	5	S-105	5	MWF	DEM
	470L	and Lab.	3	S-106	2-3	TTh	DEM



## BIOLOGICAL SCIENCE—Continued

## Full Session

D.P. Course No.	Dept. Course No.	Course Title	Credits	Place	Period	Day	Instructor
3091	485	Evolution .....	3	S-203	6	MWF	DEM
	596	Individual Study .....	2-4			Arr.	S
	597	Individual Study .....	2-4			Arr.	S
3092	598	Biol. Seminar .....	1			Arr.	GWC
3093	599	Biol. Seminar .....	1			Arr.	GWC

## BOTANY

## Full Session

3095	263	Plant Taxonomy .....	5	S-109	4	TTh	WWE
	263L	and Lab. ....		S-203	3-4	MWF	WWE
3096	341	Plant Ecology .....	5	S-100	1	MWF	CAW
	341L	and Lab. ....		S-102	4-5	TTh	CAW
3098	462	Comp. Morph. Vasc. Plants.....	5	S-103	2	MWF	EPK
	462L	and Lab. ....		S-103	2-3	TTh	EPK
	496	Individual Study .....	2			Arr.	S
	497	Individual Study .....	2			Arr.	S

## First Term

1094	162	Botany .....	5	S-100	6	Daily	DLW
	162L	and Lab. ....		S-102	7-8	Daily	DLW
1097	460	Plant Pathology .....	3	S-102	5	MTWTh	MWM
	460L	and Lab .....		S-102	1-2	TTh	MWM

## BUSINESS ADMINISTRATION

## Full Session

3063	251	Princ. of Accounting I .....	5	C-104	2	Daily	PRO
3064	359	Federal Taxation .....	5	C-224	1	Daily	PRO
3065	368	Marketing Middleman .....	4	C-104	3	MTWTh	CRS
3066	370	Business Finance .....	4	Q-301	2	MTWTh	HSW
3067	469	Market Research .....	4	C-104	6	MTWTh	CRS
3068	475	Investments .....	4	C-104	4	MTWTh	HSW
	496	Individual Study .....	2			Arr.	S
	496	Individual Study .....	2			Arr.	PRO

## BUSINESS EDUCATION

## Workshops

440WE		Coordination and Work Ex- perience in the Office Occu- pations, July 24-28 .....	2	C-103	8 a.m.- 12 noon 1-4 p.m.	Daily	EJK
81	440BB	Basic Business—July 31-Aug. 4....	2	C-103	8 a.m.- 12 noon	Daily	EJK
82	440FS	Personal and Family Financial Security—June 21-July 20.....	5	C-103	1-4 p.m. 2-3	Daily	EJK

## BUSINESS EDUCATION—Continued

## Full Session

D.P. Course No.	Dept. Course No.	Course Title	Credits	Place	Period	Day	Instructor
3070	142	Typewriting Pers. Use .....	2	C-222	6	MTWTh	KKH
3071	151	Beginning Typing .....	2	C-222	6	MTWTh	KKH
3789	152	Intermediate Typing .....	2	C-222	6	MTWTh	KKH
3790	153	Advanced Typing .....	2	C-222	6	MTWTh	KKH
3791	254	Vocational Typing .....	2	C-222	6	MTWTh	KKH

## First Term

1072	271	Office Machines .....	3	C-223	2-3	Daily	KKH
1073	272	Vocational Proficiency in Office Machines .....	5	C-223	2-3	Daily	KKH
1075	373	Practical Techniques .....	2	C-220	5	MTWTh	KKH
1078	392	Records Management .....	3	C-221	1	Daily	RAF
1069	526	Mach. Shorthand for Teachers....	5	C-221	6-7	Daily	S
1079	528	Imp. of Inst. in Typ. ....	3	C-221	4	Daily	RAF
	496	Individual Study .....	1-2	C-218-c		Arr.	EJK

## Second Term

2074	371	Office Management .....	3	C-222	5	Daily	KKH
2077	390	Automated Office Practice .....	4	C-222	3 & Arr.	Daily	RDF
2788	522	Teach. Secretarial Pro. ....	3	C-221	6	Daily	RDF
2083	524	H. S. Bus. Ed. Program.....	3	C-221	2	Daily	RIP
2084	595	Research—Business Education....	3	C-221	4	Daily	RIP
	496	Individual Study .....	1-2	C-218		Arr.	EJK

## CHEMISTRY

## Full Session

3101	163	Elementary College Chemistry....	4	S-211	6	TTh	RDG
		and Lab. ....		S-202	7-8	TTh	RDG
3103	365	Biological Chemistry .....	5	S-211	6	MWF	RDG
		and Lab .....		S-208	Arr.	TTh	RDG
3104	454	Intro. Spectroscopy .....	3	S-207	7	MWF	RWH
	496	Individual Study .....	2-4			Arr.	HSH
	497	Individual Study .....	2-4			Arr.	HSH
3107	504	Chem. Study .....	4	S-211	2	MTWTh	LCD
	596	Individual Study .....	3			Arr.	WWN
	600	Thesis .....	3-6			Arr.	S

## First Term

1099	101	Chemistry .....	4	S-211	4	Daily	WWN
		and Lab. ....		S-202	5-6	TTh	WWN
1102	350	Inorganic Chemistry .....	3	S-211	6	MTWTh	LCD
1105	481	Inter. Phys. Chemistry .....	3	S-209	7	MWF	HSH
		and Lab .....		S-212		Arr.	HSH

## Second Term

2100	102	Chemistry .....	4	S-211	4	Daily	RWH
		and Lab. ....		S-202	5-6	TTh	RWH
2106	482	Inter. Phys. Chemistry .....	3	S-209	7	MWF	HSH
		and Lab. ....		S-212		Arr.	HSH

**CRAFTS**  
**Full Session**

D.P. Course No.	Dept. Course No.	Course Title	Credits	Place	Period	Day	Instructor
3108	262	Pottery .....	3	I-200	1-2	MWF	HLT
3109	347	Jewelry .....	3	Prefab	3-4	MWF	DPT
3110	362	Pottery .....	3	I-200	3-4	MWF	HLT
3113	447	Adv. Jewelry .....	2	Prefab	6-7	TTh	DPT
3114	462	Adv. Pottery .....	3	I-200	7-8-9	TTh	HLT
496		Individual Study .....	2			Arr.	S
497		Individual Study .....	2			Arr.	S
498		Individual Study .....	2			Arr.	S
3117	547	Adv. Studies—Jewelry .....	2		6-7	TTh	DPT
3118	547	Adv. Studies—Jewelry .....	3		6-7-8	TTh	DPT
3792	547	Adv. Studies—Jewelry .....	5		6-7-8	TTh & Arr.	DPT
3119	562	Adv. Studies—Ceramics .....	3	I-200	7-8-9	TTh	HLT
3120	562	Adv. Studies—Ceramics .....	5	I-200	7-8-9	TTh & Arr.	HLT
596		Individual Study .....	2			Arr.	S
597		Individual Study .....	2			Arr.	S
598		Individual Study .....	2			Arr.	S

**First Term**

496		Individual Study .....	1			Arr.	S
497		Individual Study .....	1			Arr.	S
498		Individual Study .....	1			Arr.	S
596		Individual Study .....	1			Arr.	S
597		Individual Study .....	1			Arr.	S
598		Individual Study .....	1			Arr.	S

**Second Term**

496		Individual Study .....	1			Arr.	S
497		Individual Study .....	1			Arr.	S
498		Individual Study .....	1			Arr.	S
596		Individual Study .....	1			Arr.	S
597		Individual Study .....	1			Arr.	S
598		Individual Study .....	1			Arr.	S

**ECONOMICS**  
**Full Session**

3121	346	Comparative Economic Systems ..	5	C-104	5	Daily	CHB
3122	385	International Economics .....	5	C-104	7	Daily	CHB
496		Individual Study .....	2			Arr.	CHB

**EDUCATION**  
**Workshops**

783	440AS	Admin. and Superv. of Spec. Ed., Aug. 7-18 .....	3	H-121	2-7	Daily	EW
190	440ME	Introduction of Montessori Ed., June 19-July 20 .....	3	E	2-3	Daily	TFN
191	440PT	Play Therapy, June 21-July 12 .....	3		2-4	Daily	SS
192	440PW	Prof. Writing, June 21-July 20 .....	2	B-211	6-7	Daily	JSJ
193	440IR1	Innovations in Reading 1, June 21-June 27 .....	1		5-7	Daily	ARB
194	440IR2	Innovations in Reading 2, June 28-July 5 .....	1		5-7	Daily	ARB

**EDUCATION—Continued**  
**Workshops**

D.P. Course No.	Dept. Course No.	Course Title	Credits	Place	Period	Day	Instructor
195	440IR3	Innovations in Reading 3, July 6-July 12 .....	1		5-7	Daily	ARB
196	440IR4	Innovations in Reading 4, July 13-July 19 .....	1		5-7	Daily	ARB
197	440DP	Data Processing, June 26 through June 30 .....	1	A-405	2-4	Daily	RAK
198	440CCh	The Crippled Child, July 23-July 28 .....	2	H-121	2-8	Daily	DAM
199	440IT	Inquiry Training, July 24-August 17 .....	3	B-209	5-7	Daily	ARB
207	440CCI	Camp for Crippled Children, July 30-August 12 .....	4	Illahee		Daily	DAM
208	440CCB	Camp for Crippled Children, July 30-August 19 .....	6	Bonneville		Daily	DAM
777	599C	Seminar in Curriculum (Aerospace) .....	4-12	McChord		TTh	
378	440CFL	Content in Family Life, July 24-August 3 .....	3	Heb. Aud.	2-7	Daily	LGB

**Full Session**

3123	207	Introduction to Education .....	4	B-101	3	Daily	GCG
3124	314	Curric. Methods and Materials....	4	C-104	1	Daily	DAU
3125	314	Curric. Methods and Materials....	4	B-102	4	Daily	JCO
3126	314	Curric. Methods and Materials....	4	B-105	5	Daily	GCG
3127	314	Curric. Methods and Materials....	4	B-105	7	Daily	S
3131	316	Instructional Aids Utilization .....	5	B-104	5	Daily	S
3132	316	Instructional Aids Utilization .....	5	B-104	6	Daily	S
3785	362	Ed./Psych. Statistics .....	4	B-107	1	Daily	JLS
3149	362	Ed./Psych. Statistics .....	4	B-107	6	Daily	DB
3151	416	Programed Learning .....	3	B-108	1	MWF	TFN
3161	420	Teaching the Language Arts.....	4	B-207	8	Daily	JAS
3162	420	Teaching the Language Arts.....	4	B-207	1	Daily	NLF
3235	469	Advanced Psych./Ed. Statistics....	4	B-106	6	Daily	JNE
3254	490	Seminar in Education Problems... 4	4	Q-312	4	Daily	DGG
3255	490	Seminar in Education Problems... 4	4	B-211	1	Daily	EPF
3256	490	Seminar in Education Problems... 4	4	B-211	2	Daily	JAS
3257	490	Seminar in Education Problems... 4	4	X-14	7	Daily	TMH
3258	490	Seminar in Education Problems... 4	4	B-211	8	Daily	ELI
3261	507	Introduction to Graduate Studies.. 3	3	B-110	4	MWF	JNE
3262	507	Introduction to Graduate Studies.. 3	3	B-105	2	MWF	LFL
3263	507	Introduction to Graduate Studies.. 3	3	B-110	1	MWF	JNE
3264	507	Introduction to Graduate Studies.. 3	3	B-110	3	MWF	S
3265	507	Introduction to Graduate Studies.. 3	3	B-110	6	MWF	S
3266	507	Introduction to Graduate Studies.. 3	3	B-110	5	MWF	TBC
3267	507	Introduction to Graduate Studies.. 3	3	B-110	7	MWF	JNE
3268	507	Introduction to Graduate Studies.. 3	3	B-110	8	MWF	LFL
3272	550	Photo Instructional Materials .... 4	4	L	4-5	TTh	WDS
3273	559	Practicum in Counseling .....	4-12	B-212	8	Arr.	JPL
3283	570	Educational Foundations .....	3	B-106	1	MWF	CM
3284	570	Educational Foundations .....	3	B-106	3	MWF	LS
3285	570	Educational Foundations .....	3	B-106	5	MWF	CM
3286	570	Educational Foundations .....	3	B-106	2	MWF	ELF
3287	570	Educational Foundations .....	3	B-106	4	MWF	ELF
3288	570	Educational Foundations .....	3	B-103	6	MWF	EB
3289	570	Educational Foundations .....	3	B-106	8	MWF	EB
3295	579	Elem. School Principal .....	5	B-207	3	Daily	RH
3296	580	Jr. High School Principal .....	5	B-208	3	Daily	JGN
3297	581	High School Principal .....	5	S-211	3	Daily	GNF
3298	585	School Supervision .....	5	B-207	4	Daily	DAU
3299	585	School Supervision .....	5	B-207	6	Daily	RAK

## EDUCATION—Continued

## Full Session

D.P. Course No.	Dept. Course No.	Course Title	Credits	Place	Period	Day	Instructor
3300	587	Ed. Administration	5	B-208	6	Daily	HDJ
3301	587	Ed. Administration	5	B-208	4	Daily	HDJ
3303	590	Public School Finance	5	B-207	7	Daily	DGG
	596	Individual Study	1-6			Arr.	S
3307	600	Thesis	3			Arr.	S
3308	600	Thesis	6			Arr.	S

## First Term

1128	316	Inst. Aids Utilization	5	B-104	1-2	Daily	KRB
1129	316	Inst. Aids Utilization	5	B-104	3-4	Daily	GAM
1133	319	Curs. and Man. Writing	1	B-110	2	TTh	EFK
1134	322	Teaching of Reading	3	B-206	3	Daily	GBB
1135	322	Teaching of Reading	3	B-206	2	Daily	DEJ
1136	322	Teaching of Reading	3	B-206	6	Daily	LCC
1140	323	Teaching of Arithmetic	3	B-107	2	Daily	DB
1142	345	Contemp. Movements	3	S-109	7	Daily	CM
1143	358	Introduction to Guidance	3	B-109	1	Daily	ACS
1144	358	Introduction to Guidance	3	B-109	4	Daily	DWJ
1145	358	Introduction to Guidance	3	B-109	2	Daily	JER
1148	358	Introduction to Guidance	3	Q-301	6	Daily	JLS
1152	417	Radio-TV in Classroom	2	B-108	2	MTWTh	CWV
1153	419	Reading Readiness	2	B-207	5	MTWTh	SN
1154	419	Reading Readiness	2	B-206	7	MTWTh	SN
1157	420	Teaching Language Arts	4	B-210	3-4	Daily	CET
1158	420	Teaching Language Arts	4	B-208	1-2	Daily	SL
1163	421	Mod. Reading Prog.—Primary	3	B-211	3	Daily	SN
1164	421	Mod. Reading Prog.—Primary	3	B-207	2	Daily	GBB
1167	422	Mod. Reading Prog.—Inter	3	B-208	2	Daily	JED
1168	422	Mod. Reading Prog.—Inter	3	B-206	5	Daily	EJ
1170	423	Reading Problems, Secondary	3	B-206	4	Daily	AT
1172	424	Reading, Content Fields	3	B-209	4	Daily	DEJ
1174	426	Studies, Problems—Reading	3	B-206	8	Daily	LCC
1175	426	Studies, Problems—Reading	3	B-206	1	Daily	TMH
1176	427	Modern Arith. Prog.—Primary	3	B-101	4	Daily	WNC
1177	427	Modern Arith. Prog.—Primary	3	B-210	6	Daily	JAS
1180	428	Modern Arith. Prog.—Inter	3	B-210	7	Daily	ELI
1181	428	Modern Arith. Prog.—Inter	3	B-209	1	Daily	EBJ
1184	431	Intercultural Education	3	B-205	3	Daily	FDE
1185	434	Activity in Secondary Schools	3	X-14	4	Daily	GWW
1186	438	Individual Instruction	2	B-105	6	MTWTh	WNC
1187	438	Individual Instruction	2	B-105	8	MTWTh	WNC
1188	438	Individual Instruction	2	B-107	5	MTWTh	SL
1209	442	Student Teaching	5	E		Daily	WGG
1210	446	Directed Observation	3	E		Daily	WGG
1211	447	Classroom Teaching Problems	3	B-101	8	Daily	ALV
1212	447	Classroom Teaching Problems	3	B-102	2	Daily	GWW
1213	447	Classroom Teaching Problems	3	E	4	Daily	EJ
1214	447	Classroom Teaching Problems	3	B-101	5	Daily	ESH
1218	450	Inst. Aids: Production	3	B-104	7-8	TTh	S
1222	459	Teacher-Counseling	3	B-208	7	Daily	ACS
1224	460	Parent/Teacher Conf.	2	B-208	8	MTWTh	JDF
1225	460	Parent/Teacher Conf.	2	X-14	6	MTWTh	CET
1229	462	Const. Classroom Tests	2	H-120	6	MTWTh	JDO
1231	464	Comm. Youth Program	3	B-205	5	Daily	MLN
1232	467	Phil. of Education	3	X-14	5	Daily	LS
1236	470	Nongraded Elementary School	2	B-102	5	MTWTh	SEH
1237	476	School and Community	3	B-109	5	Daily	JGN
1239	487	Group Proc. and Leadership	3	B-214	3	Daily	AHH
1240	487	Group Proc. and Leadership	3	B-214	5	Daily	HRB
1243	488	Group Dynam. and the Individ.	3	B-214	2	Daily	MLP

## EDUCATION—Continued

## First Term

D.P. Course No.	Dept. Course No.	Course Title	Credits	Place	Period	Day	Instructor
1245	490	Seminar in Ed. Problems	4	B-210	1-2	Daily	LMG
1246	490	Seminar in Ed. Problems	4	C-231	4-5	Daily	ALV
1247	490	Seminar in Ed. Problems	4	B-108	5-6	Daily	FDE
1248	490	Seminar in Ed. Problems	4	S-207	6-7	Daily	MLN
1249	490	Seminar in Ed. Problems	4	B-209	7-8	Daily	MLN
1259	499	Montessori Education	3	C-106	6	Daily	BNP
1269	508	Comparative Education	3	B-109	6	Daily	ELF
	546	Adv. Lab. Experience	2	E		Arr.	WGG
1273	551	Elem. School Curriculum	3	B-101	1	Daily	RH
1274	551	Elem. School Curriculum	3	B-208	5	Daily	NLF
1276	552	High School Curriculum	3	C-106	7	Daily	GNF
1277	555	Prog. of Curriculum Impr.	3	Q-300	5	Daily	EB
1279	558	Adm. Guidance Program	3	B-105	1	Daily	JER
1280	562	Eval. School Program	3	B-107	3	Daily	ESH
1282	570	Education Foundations	3	B-107	7	Daily	LS
1291	576	Pers. Relations—School	3	B-108	8	Daily	HDJ
1292	577	In-Service Programs	3	B-103	1	Daily	S
1305	599A	Seminar Ed. Administration	3	B-209	5	Daily	LMG
1306	599C	Seminar in Curriculum	2	McChord	1-2	TTh	AEA

## Second Term

2130	316	Inst. Aids—Utilization	5	B-104	3-4	Daily	AHH
2137	322	Teaching Reading	3	B-206	1	Daily	ARB
2138	322	Teaching Reading	3	B-206	3	Daily	ARB
2139	322	Teaching Reading	3	B-206	7	Daily	JED
2141	323	Teaching Arithmetic	3	B-107	2	Daily	DB
2146	358	Introduction to Guidance	3	B-109	3	Daily	DWJ
2147	358	Introduction to Guidance	3	B-109	5	Daily	ACS
2150	410	Teach. Nurs. Sch. and Kinder.	3	B-206	2	Daily	LLW
2155	419	Reading Readiness	2	B-206	5	MTWTh	EJ
2156	419	Reading Readiness	2	B-208	7	MTWTh	EJ
2159	420	Teaching Language Arts	4	B-210	3-4	Daily	NLF
2160	420	Teaching Language Arts	4	B-210	7-8	Daily	SL
2165	421	Modern Reading Prog.—Pri.	3	B-206	6	Daily	S
2166	421	Modern Reading Prog.—Pri.	3	B-206	4	Daily	S
2169	422	Modern Reading Prog.—Inter	3	B-206	8	Daily	GEH
2171	423	Reading Prob., Secondary	3	B-208	1	Daily	EJ
2173	424	Reading—Content Fields	3	B-102	8	Daily	JED
2178	427	Modern Arith. Prog.—Primary	3	B-207	5	Daily	ELI
2179	427	Modern Arith. Prog.—Primary	3	B-208	8	Daily	MLM
2182	428	Modern Arith. Prog.—Inter	3	B-103	1	Daily	ELI
2183	428	Modern Arith. Prog.—Inter	3	B-105	6	Daily	EBJ
2189	438	Indiv. Instruction	2	B-105	3	MTWTh	WNC
2215	447	Classroom Teaching Problems	3	B-102	2	Daily	ALV
2216	447	Classroom Teaching Problems	3	B-209	1	Daily	GWW
2217	447	Classroom Teaching Problems	3	B-102	5	Daily	TMH
2219	450	Inst. Aids: Production	3	B-104	7-8	TTh	S
2221	452	Jr. High Curriculum	3	B-101	6	Daily	JGN
2223	459	Teacher-Counseling	3	B-202	3	Daily	ACS
2226	460	Parent/Teacher Conferences	2	B-107	2	MTWTh	DWJ
2227	460	Parent/Teacher Conferences	2	B-102	1	MTWTh	WNC
2230	462	Const. Classroom Tests	2	B-211	3	MTWTh	RHW
2233	467	Philosophy of Education	3	B-109	6	Daily	LS
2234	468	History of Education	2	S-100	3	MTWTh	CM
2238	476	School and Community	3	B-109	1	Daily	GNF
2241	487	Group Proc. and Leadership	3	B-214	1	Daily	JER
2242	487	Group Proc. and Leadership	3	Q-300	4	Daily	HRB
2244	488	Group Dynam. and Indiv.	3	B-214	3	Daily	MLP
2250	490	Seminar in Ed. Problems	4	B-209	4-5	Daily	ALV
2251	490	Seminar in Ed. Problems	4	B-104	1-2	Daily	JSJ

## EDUCATION—Continued

### Second Term

D.P. Course No.	Dept. Course No.	Course Title	Credits	Place	Period	Day	Instructor
2252	490	Seminar in Ed. Problems .....	4	B-107	7-8	Daily	CAE
2253	490	Seminar in Ed. Problems .....	4	B-108	5-6	Daily	GEH
2260	499	Montessori Education .....	3	B-210	6	Daily	BNP
2270	508	Comparative Education .....	3	B-101	7	Daily	ELF
2271	547	Supervising Student Teachers....	3	B-107	3	Daily	RDG
2275	551	Elem. School Curriculum .....	3	B-105	1	Daily	RH
2278	555	Prog. of Curriculum Impr. ....	3	B-101	2	Daily	EB
2281	562	Eval. School Program .....	3	H-104	4	Daily	RAK
2290	574	Adult Education .....	3	B-208	5	Daily	GWV
2293	577	In-Service Programs .....	3	B-211	6	Daily	MLM
2294	578	Instr. Aids: Admin. ....	3	B-105	8	Daily	KRB
2302	589	School Plant Planning .....	5	B-205	5-6	Daily	RHW
2304	595	Comm., Jr. College .....	3	B-107	5	Daily	CAE

### ENGLISH Workshops

331	440EPW	Poetry, Sec. School Teachers.....	4	Q-304	3	MTWTh	JUM
332	440LVW	Lit., Human Values, Censorship ..	4	C-231	3-4	Daily	JLV
333	440PFW	Prose, Fiction, Secondary School Teachers .....	4	H-105	6-7	TTh	LBH

### Full Session

3309	101	Composition .....	3	Q-304	2	MWF	RGJ
3310	105	Introduction to Fiction .....	3	H-105	6	MWF	FSM
3311	106	Introduction to Poetry .....	3	H-118	3	MWF	DWC
3312	201	Composition .....	3	C-114	7	MWF	JUM
3313	201	Composition .....	3	C-114	4	MWF	RGJ
3314	240	Introduction to Ling. ....	3	C-114	1	MWF	EKL
3315	245	English Literature .....	3	H-100	2	MWF	AEF
3316	246	English Literature .....	3	H-100	6	MWF	DGC
3317	301	Composition .....	3	C-114	3	MWF	LBH
3318	301	Composition .....	3	C-114	5	MWF	JLV
3319	301	Composition .....	3	C-114	8	MWF	MEM
3323	344	Adv. Composition .....	3	B-105	4	MWF	AEF
3324	348	English Novel .....	3	H-120	8	MWF	JLV
3325	352	Shakespeare .....	3	H-105	7	MWF	MEM
3326	361	Renaissance Drama .....	3	H-118	1	MWF	BGC
3327	363	Renaissance Drama .....	3	C-112	5	MWF	DGC
3328	371	American Fiction 2 .....	3	C-231	2	MWF	FMC
3329	384	Short Story .....	3	C-114	6	MWF	RGJ
3330	428	Teaching English Secondary....	4	H-121	1	MTWTh	MK
3334	442	History of English Language....	3	H-118	4	MWF	LBH
3335	445	Approaches to Eng. Grammar....	3	C-114	2	MWF	EKL
3336	447	Chaucer's Age .....	3	H-118	8	MWF	AEF
3337	453	Milton .....	3	X-14	2	MWF	MEM
3338	468	19th Century .....	3	H-118	2	MWF	KR
3339	469	19th Century .....	3	H-118	7	MWF	KR
3340	476	Romantic Movement .....	3	H-118	6	MWF	FMC
3341	477	American Poetry 2 .....	3	H-118	5	MWF	DWC
496		Individual Study .....	1-3			Arr.	KR
3342	499	James Howell .....	3	C-114	2-3	Tu	FMC
3343	499	Blake .....	3	C-114	6-7	Th	HLA
3344	499	Yeats-Roethke (Sem.) .....	3	C-114	6-7	Tu	JUM
3345	545.2	Blake .....	4	C-114	6-7-8	Th	HLA
3346	545.3	Yeats-Roethke (Prosem.).....	4	C-114	6-7-8	Tu	JUM
3347	575.2	James Howell .....	4	C-114	2-3-4	Tu	FMC
3348	591.3	Literary Criticism .....	4	C-231	3-4	TTh	HLA
596		Individual Study .....	4			Arr.	KR

## ENGLISH—Continued

### First Term

D.P. Course No.	Dept. Course No.	Course Title	Credits	Place	Period	Day	Instructor
1320	320	Children's Literature .....	2	A-408	5	MTWTh	EFK
1321	320	Children's Literature .....	2	C-105	6	MTWTh	EFK

### Second Term

2322	320	Children's Literature .....	2	X-14	5	MTWTh	SL
------	-----	-----------------------------	---	------	---	-------	----

### FRENCH First Term

1349	362	Inter. Conv. and Comp. ....	2	C-229	2	MTWTh	JJW
1350	375	18th Cent. French Literature.....	5	C-229	3-4	Daily	OG
1352	480	"Avant-garde" Literature .....	4	C-229	5-6	MTWTh	JJW

### Second Term

2351	450	Contemporary French Novel .....	5	M-3	3-4	Daily	OG
------	-----	---------------------------------	---	-----	-----	-------	----

### GEOGRAPHY Full Session

3353	100	World Geography .....	5	C-107	2	Daily	JJH
3354	107	Physical Geography .....	5	C-112	4	MTTThF	MRK
3355	245	Economic Geography .....	5	C-107	5	Daily	OFJ
3358	352	Geography of Anglo-America....	5	C-111	4	Daily	RSF
3359	371	Geography of Europe .....	5	C-111	2	Daily	RSF
3360	386	Geomorphology .....	3	C-108	7	TTh	MRK
		and Lab. ....		C-108	8	TTh	MRK
3362	481	Urban Geography .....	5	C-112	3	Daily	OFJ
3363	595	Psch. Sem. Geo. ....	3	C-111	7	MWF	RSF

### First Term

1356	350	Cons. of Natural Resources.....	3	C-112	6	Daily	JJH
1361	421	Practical Aids .....	2	C-111	1	MTWTh	OFJ

### Second Term

2357	350	Cons. of Natural Resources.....	3	C-112	2	Daily	JJH
------	-----	---------------------------------	---	-------	---	-------	-----

### GEOLOGY Full Session

3364	350	Washington Geology .....	3	S-103	5	MWTh	PCD
------	-----	--------------------------	---	-------	---	------	-----

### HEALTH EDUCATION Full Session

3397	349	Anatomy-Kinesiology .....	5	N-116	1	Daily	LER
------	-----	---------------------------	---	-------	---	-------	-----



## HEALTH EDUCATION—Continued

## First Term

D.P. Course No.	Dept. Course No.	Course Title	Credits	Place	Period	Day	Instructor
1392	100	Health Essentials .....	3	N-202	2	Daily	DF
1394	207	Introduction School Health .....	3	N-202	4	Daily	JB
1395	245	First Aid .....	2	N-117	7	MTWTh	DMP
1398	450	Physiology of Exercise .....	3	N-116	3	Daily	LER
	596	Individual Study .....	1			Arr.	JLK

## Second Term

2393	100	Health Essentials .....	3	N-202	1	Daily	S
2396	321	Meth. Mat. Health Education.....	3	N-116	6	Daily	JB

## HISTORY

## Full Session

3399	143	U. S. History to 1865.....	5	C-224	2	Daily	FHR
3400	152	Western Civilization—1500 .....	5	C-107	4	Daily	ZK
3405	335	Rise in India .....	5	C-112	1	Daily	PEL
3406	346	West in American History .....	5	C-224	5	Daily	KDR
3407	355	20th Cent. U. S. 1898-1933.....	4	C-224	4	MTThF	FHR
3408	385	Modern Asia .....	5	C-227	2	Daily	ZK
3410	444	Civil War and Reconstruction.....	5	C-224	3	Daily	KDR
3413	455	Intellectual History U. S. ....	5	C-225	4	Daily	WLB
3415	501	Historiography .....	3	C-225	6	MWF	ZK
3416	505	Reserach Seminar in History.....	3		7-8	M	WLB

## First Term

1401	201	Hist. Gov. Washington.....	3	C-224	6	Daily	FHR
1403	331	Colonial Africa .....	3	C-105	3	Daily	PEL
1409	421	M/M in History .....	2	C-224	7	MTWTh	LLL
1411	445	American Colonial Mind.....	3	C-111	3	Daily	LLL
1412	447	American Revolution .....	3	C-105	5	Daily	LLL

## Second Term

2402	201	Hist. Gov. Washington .....	3	C-224	7	Daily	KDR
2404	332	Independent Africa .....	3	C-105	3	Daily	PEL
2414	470	Moslem World .....	3	C-105	5	Daily	PEL

## HOME ECONOMICS

## Workshops

372	440C	Creativity .....	3	Q-212	2-6	Daily	LAT
373	440C&D	Const. and Design—Costumes .....	3	Q-308	5-7	MTWTh	AH
374	440CENE	Curr. Enrichment—Nursery Ed....	3	C-324	6	Daily	FB
375	440EHE	Evaluation in Home Ec. ....	3	C-320	2-6	Daily	S
376	440LE	Living Environment .....	3	Q-212	3	Daily	LAT
378	440CFL	Content—Family Life Education...	3	E	2-7	Daily	LGB

## HOME ECONOMICS—Continued

## Full Session

D.P. Course No.	Dept. Course No.	Course Title	Credits	Place	Period	Day	Instructor
3778	490	Nursery School .....	3	Q-206	8	TTh	FB
3779	490L	and Lab A or.....		E-108	1-4	M	FB
3780	490L	Lab B or .....		E-108	1-4	Tu	FB
3781	490L	Lab C or .....		E-108	1-4	W	FB
3782	490L	Lab D .....		E-108	1-4	Th	FB

## First Term

1367	320	Methods in Home Ec.....	3	C-324	1	Daily	JHW
1369	394	Modern Prob. Fam. ....	3	C-324	5	Daily	LGB
1370	421	Mth. Adult Education .....	2	C-321	1	MTWTh	BLT
1371	430	Homemaking for Handicapped....	3	C-324	2	Daily	EH
1379	447	Nutrition and Society .....	3	C-324	7	Daily	AED
1380	470	Home Management Lab. ....	5		1-5-9	Daily	EH
1382	485	Experimental Foods 1 .....	2	C-306	1-2	MTWTh	AED
1387	492	Child Care/Fam. Dyn. ....	3	C-324	3	Daily	LGB
1388	499	Sem. H. Ec. Ed. ....	1	C-324	8	TTh	BLT
1389	530	Demonst. Tech. ....	3	C-321	7-8	Daily	JHW

## Second Term

2365	200	General Nutrition .....	3	C-324	2	Daily	MVC
2366	290	Child Care .....	3	C-324	7	Daily	FB
2368	391	Cons. Buy.—Household Goods.....	3	C-324	3	Daily	EH
2381	470	Home Management Lab. ....	5		1-5-9	Daily	EH
2390	550	Clothing Const. Tech. ....	2	Q-308	5-6	Daily	AH
2391	587	Gourmet Cooking .....	3	C-306	4-5	Daily	MVC

## INDUSTRIAL ARTS

## See Technical and Industrial Education

## JOURNALISM

## First Term

1428	262	Practical Journalism .....	1		7	W	JPF
1429	365	High School Publications .....	3	Q-301	3	Daily	JEL

## LIBRARY SCIENCE

## First Term

1430	307	School Library Prof. ....	3	B-105	3	Daily	WJB
1431	318	Library Res./Srv. ....	3	L-202	2	Daily	HDP
1432	350	Selection Library Material.....	3	B-102	1	Daily	WJB
1433	360	Cataloging—Classif. ....	3	L-202	4	Daily	HDP
1434	390	Hist. Survey of Books.....	3	B-103	8	Daily	DD

## Second Term

2435	418	Ref. Subj. Ars. ....	3	L-202	2	Daily	WJB
2436	420	Reading Material, Young People..	3	L-203	4	Daily	HDP
2437	460	Adv. Cat./Cls. ....	3	L-202	5	Daily	WJB
2438	470	School Library Adm.....	3	Q-300	6	Daily	HDP
2439	485	Research/BBlogr. ....	2	L-202	8	MTWTh	DD



**MATHEMATICS**

**Full Session**

D.P. Course No.	Dept. Course No.	Course Title	Credits	Place	Period	Day	Instructor
3440	150	Elem. Computer Program.....	3	S-200	6	MWF	BLM
3441	150L	and Lab. A or.....			3-4	M	BLM
3442	150L	Lab. B or.....			6-7	Tu	BLM
3443	150L	Lab. C or.....			3-4	W	BLM
3444	150L	Lab. D.....			6-7	Th	BLM
3445	163	College Algebra.....	4	S-200	2	MTWTh	S
3446	171.1	Introduction to Calculus.....	4	S-200	1	TWThF	DRC
3447	261.1	Foundations—Math.....	4	S-200	4	MTWTh	BP
3448	261.3	Linr. Algebra.....	4	S-211	7	MTWTh	DRC

**First Term**

D.P. Course No.	Dept. Course No.	Course Title	Credits	Place	Period	Day	Instructor
1449	422.1	Modern Programs—Math.....	3	S-209	4	Daily	DRC
1451	455.1	Principles of Geometry.....	3	S-209	1	Daily	BLM
1453	461.1	Abstract Algebra.....	3	S-209	2	Daily	BP
1455	471.1	Adv. Calculus.....	3	S-209	3	Daily	RCA
	496	Individual Study.....	2			Arr.	BP
1457	598.1	Grad. Seminar.....	3			Arr.	RCA

**Second Term**

D.P. Course No.	Dept. Course No.	Course Title	Credits	Place	Period	Day	Instructor
2450	430	Intro. Theory Numbers.....	3	S-209	4	Daily	BAR
2452	455.2	Principles of Geometry.....	3	S-209	1	Daily	KOG
2454	461.2	Abstract Algebra.....	3	S-209	2	Daily	BP
2456	471.2	Adv. Calculus.....	3	S-209	3	Daily	KOG
	497	Individual Study.....	2			Arr.	BAR

**MUSIC**

**Workshops**

D.P. Course No.	Dept. Course No.	Course Title	Credits	Place	Period	Day	Instructor
498	440C	Choral.....	2	H-119	9-12:00 1:30-4:00		WSH
499	440E	Elem. Mus. Ed.....	3	H-103	2-7	Daily	SJP
500	440P	Percussion.....	3	H-122	2-7		BS

**Full Session**

D.P. Course No.	Dept. Course No.	Course Title	Credits	Place	Period	Day	Instructor
3462	274	Music History 3.....	3	H-104	1	MWF	DKS

**First Term**

D.P. Course No.	Dept. Course No.	Course Title	Credits	Place	Period	Day	Instructor
1459	244	Theory 4.....	3	H-120	4	Daily	CWD
1464	323	Choral Mus. Ed.....	3	H-104	4	Daily	EGL
1465	325	Instr. Mus. Ed.....	3	H-120	5	Daily	JRJ
1466	326	Music in Classroom.....	3	H-103	1	Daily	SJP
1470	341	Conducting 1.....	3	H-119	2	Daily	WCF
1472	343	Counterpoint.....	3	H-104	7	Daily	HAB
1473	355A	Class Piano.....	1	H-121	8	MTWTh	CWD
1475	355C	Class Strings.....	1	H-122	3	MTWTh	HAB
1476	355D	Class Woodwind.....	1	H-122	2	MTWTh	ABC
1479	365A	Applied Piano.....	5	H-210		Arr.	DKS
1481	365B	Applied Voice.....	5	H-101		Arr.	WSH
1483	365C	Applied Strings.....	5	H-108		Arr.	HAB
1485	365D	Applied Woodwinds.....	5	H-201		Arr.	ABC
1487	365E	Applied Brass.....	5	H-202		Arr.	RMP
1489	365G	Applied Percussion.....	5	H-201		Arr.	ABC

**MUSIC—Continued**

**First Term**

D.P. Course No.	Dept. Course No.	Course Title	Credits	Place	Period	Day	Instructor
1491	368A	Choir.....	5	H-119	6	TTh	WSH
1493	388A	Band.....	5	H-122	6	MWF	ABC
1495	424	Gen. Music in Jr. High.....	2	H-104	3	MTWTh	JRJ
1496	425B	Tch. Ind. Lessons.....	1	H-121	7	MTWTh	JSH
1497	425E	Tch. Ind. Lessons.....	1	H-122	8	MTWTh	JRJ
1503	465A	Applied Piano.....	5	H-210		Arr.	DKS
1505	465B	Applied Voice.....	5	H-101		Arr.	WSH
1507	465C	Applied Strings.....	5	H-108		Arr.	HAB
1509	465D	Applied Woodwinds.....	5	H-201		Arr.	ABC
1511	465E	Applied Brass.....	5	H-202		Arr.	RMP
1513	465G	Applied Percussion.....	5	H-201		Arr.	ABC
1515	468A	Choir.....	5	H-119	6	TTh	WSH
1517	475	History Chamber Music.....	3	H-105	5	Daily	WCF
1520	483	Composition 1.....	3	H-120	1	Daily	RMP
1521	486	Stage Band Arranging.....	3	H-105	2	Daily	RMP
1522	488A	Band.....	5	H-122	6	MWF	ABC
1524	490	Hrmonic. Anal.....	3	H-104	2	Daily	HAB
1525	491	Choral Interp.—Technique.....	3	H-105	1	Daily	EGL
1526	492	Choral Comp.—Arranging.....	3	H-120	7	Daily	JWD
1527	521	Methods Musical Research.....	3	H-105	4	Daily	JSH
1530	561	Opera Workshop.....	2	H-119	8	MTWTh	JWD
1531	565A	Applied Piano.....	5	H-210		Arr.	DKS
1533	565B	Applied Voice.....	5	H-101		Arr.	WSH
1535	565C	Applied Strings.....	5	H-108		Arr.	HAB
1537	565D	Applied Woodwinds.....	5	H-201		Arr.	ABC
1539	565E	Applied Brass.....	5	H-202		Arr.	RMP
1541	565G	Applied Percussion.....	5	H-201		Arr.	ABC
1543	588A	Choir.....	5	H-119	6	TTh	WSH
1547	588A	Band.....	5	H-122	6	MWF	ABC
1549	590	Superv. Public School Music.....	3	H-105	3	Daily	WSH
1551	599.1	Seminar Hist. Music.....	3	H-104	5	Daily	DKS

**Second Term**

D.P. Course No.	Dept. Course No.	Course Title	Credits	Place	Period	Day	Instructor
2458	100.4	Intro. Music—Fundamentals.....	3	H-105	4	Daily	SJP
1793	155A	Class Piano.....	1	H-121	8	MTWTh	CWD
2460	245	Theory 5.....	3	H-120	4	Daily	CWD
2461	246	Theory 6.....	3	H-120	4	Daily	CWD
2463	321	Mus. Ed., Elementary School.....	3	H-103	5	Daily	SJP
2467	326	Music in Classroom.....	3	H-104	2	Daily	GRR
2468	327	Song Lit.....	2	H-104	3	MTWTh	GRR
2469	340	Form Analysis.....	3	H-104	7	Daily	CWD
2471	342	Conducting 2.....	3	H-119	2	Daily	WCF
2474	355B	Class Voice.....	1	H-119	7	MTWTh	EGL
2477	355E	Class Brass.....	1	H-122	5	MTWTh	GRR
2478	355G	Class Percussion.....	1	H-122	2	MTWTh	ABC
2480	365A	Applied Piano.....	5	H-210		Arr.	DKS
2482	365B	Applied Voice.....	5	H-101		Arr.	WSH
2484	365C	Applied Strings.....	5	H-204		Arr.	WCF
2486	365D	Applied Woodwinds.....	5	H-201		Arr.	ABC
2488	365E	Applied Brass.....	5	H-202		Arr.	RMP
2490	365G	Applied Percussion.....	5	H-201		Arr.	ABC
2492	368B	Choir.....	5	H-119	7	TTh	WSH
2494	388B	Band.....	5	H-122	6	MWF	ABC
2501	452	Lit. Beethoven.....	3	H-105	5	Daily	WCF
2502	458	Survey Solo Vocal Lit.....	3	H-104	8	Daily	JSH
2504	465A	Applied Piano.....	5	H-210		Arr.	DKS
2506	465B	Applied Voice.....	5	H-101		Arr.	WSH
2508	465C	Applied Strings.....	5	H-204		Arr.	WCF
2510	465D	Applied Woodwinds.....	5	H-201		Arr.	ABC
2512	465E	Applied Brass.....	5	H-202		Arr.	RMP

## MUSIC—Continued

### Second Term

D.P. Course No.	Dept. Course No.	Course Title	Credits	Place	Period	Day	Instructor
2514	465G	Applied Percussion	5	H-201		Arr.	ABC
2516	468B	Choir	5	H-119	6	TTh	WSH
2518	476	History Choral Music	3	H-104	5	Daily	EGL
2519	482	Inst. Ad. Tech.	3	H-120	3	Daily	ABC
2523	488B	Band	5	H-122	6	MWF	ABC
2528	541	Condet. 3 Choral	3	H-105	1	Daily	EGL
2529	551	Acmpmnt./Song	3	H-210	5	Daily	DKS
2532	565A	Applied Piano	5	H-210		Arr.	DKS
2534	565B	Applied Voice	5	H-101		Arr.	WSH
2536	565C	Applied Strings	5	H-204		Arr.	WSH
2538	565D	Applied Woodwinds	5	H-201		Arr.	ABC
2540	565E	Applied Brass	5	H-202		Arr.	RMP
2542	565G	Applied Percussion	5	H-201		Arr.	ABC
2544	568B	Choir	5	H-119	6	TTh	WSH
2545	570	Hst. Voc. Art.	3	H-103	4	Daily	JSH
2546	583	Comp 2	3	H-120	1	Daily	RMP
2548	588B	Band	5	H-122	6	MWF	ABC
2550	592	Ad. Chr. Cp./Ar.	3	H-120	7	Daily	JWD
	596	Individual Study		H-106	1	Arr.	GRR
2552	599.5	Sem. Hist. Music	3	H-103	2	Daily	JWD

## PHILOSOPHY

### Full Session

D.P. Course No.	Dept. Course No.	Course Title	Credits	Place	Period	Day	Instructor
3609	260	Intro. Logic	3	Q-210	3	MWF	WHD
3610	260	Intro. Logic	3	B-211	4	MWF	JGU
3611	245	Ethics	5	Q-206	3	Daily	JGU
3612	350	Phil. of Religion	5	C-225	2	Daily	WHD
3613	352	Hist. Western Phil.	4	C-227	6	MTWTh	JGU
3614	460	Intro. Symbol. Logic	3	Q-207	5	MWF	WHD
3794	467	Phil. of Ed.	5	C-106	5	Daily	LS
3616	493	Undergraduate Thesis	2			Arr.	WHD

### First Term

1608	207	Intro. to Philosophy	5	C-324	4-5	Daily	PMB
1615	493	Undergraduate Thesis	2			Arr.	PMB

## PHYSICAL EDUCATION

### Workshops

583	440RHI	Elem. Rhythms	3	N-203	1	Daily	JB
584	440TF	Track and Field	3	N-113	3	Daily	DMP
585	440W	Wrestling	3	N-205	1	Daily	ERB

### First Term

1554	26	Volleyball	1	N-99	7	MTWTh	JGN
1556	34	Soc. Dance	1	N-203	3	MTWTh	JB
1557	42	Beginning Swimming	1	N-106	3	MTWTh	RG
1559	43	Intermediate Swimming	1	N-106	4	MTWTh	RG
1560	50	Archery	1	N-109	2	MTWTh	HT
1562	62	Badminton	1	N-99	4	MTWTh	JGN

## PHYSICAL EDUCATION—Continued

### First Term

D.P. Course No.	Dept. Course No.	Course Title	Credits	Place	Period	Day	Instructor
1564	54	Bowling	1		5	MTWTh	DP
1566	62	Beginning Golf	1	N-109	1	MTWTh	ALB
1569	64	Rec. Game	1	N-204	4	MTWTh	HT
1570	68	Tennis	1		3	MTWTh	JLK
1572	131	Aquatics	1	N-106	6	MTWTh	RG
1573	207	Intro. to P.E.	3	N-117	5	Daily	JMP
1575	334	P.E. Act. Elem. School	3	N-113	2	Daily	JMP
1576	334	P.E. Act. Elem. School	3	N-202	6	Daily	RNI
1579	335	P.E. Methods—Sec. School	3	N-202	5	Daily	APH
1581	348	Athletic Training	2	N-117	1	MTWTh	DF
1586	443	Intramural Program	2	N-116	7	MTWTh	RG
1588	445	P.E. Facility	3	N-116	2	Daily	DN
1589	458	Meas. in P.E.	3	N-116	6	Daily	EAI
1593	470	Trends in P.E.	3	N-117	6	Daily	JGN
1595	471	Phil. Elem. Sp. P.E.	3	N-116	4	Daily	ERB
1597	499A	Seminar in Athletics	2	N-202	3	MTWTh	ALB
1599	523	Adv. Basketball Coaching	3	N-117	3	Daily	DN
1600	524	Adv. Track Coaching	3	N-117	4	Daily	APH
1602	558	Meth. of Research P.E.	3	N-116	5	Daily	RNI
1605	581	Adv. P.E. H.S./College	3	N-117	2	Daily	AHP
	596	Individual Study	1			Arr.	EAI
	599	Phil. and Lit. in P.E.	3	N-113	6	Daily	JLK

### Second Term

2553	20M	Softball	1	N-109	4	MTWTh	SS
2555	26	Volleyball	1	N-99	2	MTWTh	S
2558	42	Beginning Swimming	1	N-106	4	MTWTh	DMP
2561	50	Archery	1	N-109	2	MTWTh	HT
2563	52	Badminton	1	N-99	6	MTWTh	SS
2565	54	Bowling	1		4	MTWTh	LER
2567	62	Beginning Golf	1	N-109	3	MTWTh	RNI
2568	62	Beginning Golf	1	N-109	5	MTWTh	DN
2571	68	Tennis	1		7	MTWTh	DN
2574	327	Thry./Pre. Rhm.	3	N-202	7	Daily	JB
2577	334	P.E. Act. Elem. School	3	N-202	3	Daily	S
2578	334	P.E. Act. Elem. School	3	N-202	6	Daily	DMP
2580	335	P.E. Methods—Sec. School	3	N-202	4	Daily	TP
2582	352	Sport Officiating—Women	2	N-113	3	MTWTh	DMP
2587	444	Manag. Equipment	3	N-117	3	Daily	SS
2589	448	Adv. Athletic Training	3	N-116	4	Daily	S
2591	458	Meas. in P.E.	3	N-117	5	Daily	EAI
2592	460	Safety P.E./Ath.	3	N-117	2	Daily	S
2594	470	Trends in P.E.	3	N-117	4	Daily	JLK
2596	480	Adm. Health and P.E.	3	N-113	2	Daily	JLK
2598	521	Adv. Football Mth.	3	N-113	5	Daily	TP
2601	525	Adv. Baseball Coaching	3	N-117	6	Daily	DN
2603	558	Methods Research—P.E.	3	N-117	1	Daily	RNI
2604	559	Analysis of Motion	3	N-116	5	Daily	LER
	596	Individual Study	1	N-100		Arr.	AHP
2607	599	Phil. and Lit. in P.E.	3	N-116	2	Daily	S

## PHYSICS

### Full Session

3620	161	Elementary Physics	5	S-211	1	MTWTF	AFL
		and Lab.		S-201		Arr.	AFL
3622	331	Astronomy 1	4	S-207	5	MWTh	RCM
3623	331L	Lab. A or		S-201	8-10 p.m.	M	RCM

## PHYSICS—Continued

## Full Session

D.P. Course No.	Dept. Course No.	Course Title	Credits	Place	Period	Day	Instructor
3624	331L	Lab. B		S-201		W	WVJ
3625	332	Astronomy 2	4	S-207	1	TThF	WVJ
3626	332L	Lab A or		S-201	8-10 p.m.	Tu	WVJ
3627	332L	Lab. B		S-201	8-10 p.m.	Th	WVJ
3628	341	Modern Physics	4	S-207	4	TWThF	WVJ
	496	Individual Study	2-4	S-300D		Arr.	WVJ

## First Term

1617	101	Physics/Chem. 1	4	S-207	3	MTWThF	AFL
		and Lab		S-201	6-7	TTh	AFL
1621	324	Meth./Mat.	3	S-207	1	MW	RCM
		and Lab.		S-201	2-3	MTWTh	RCM

## Second Term

2618	102	Physics/Chem. 2	4	S-207	2	Daily	RCM
		and Lab		S-201	7-8	MW	RCM
2619	103	Gen. Physics Sci.	3	S-207	3	MWThF	AFL
		and Lab.		S-201	6-7	TTh	AFL

## POLITICAL SCIENCE

## Full Session

3629	145	Modern Government	4	C-227	3	MTWTh	S
3631	378	Compar. Government	5	C-227	5	Daily	S
3632	384	International Politics	5	C-227	1	Daily	CIS
3634	488	Modern Political Philosophy	3	C-227	7	MWF	S

## First Term

1630	242	Public Opinion, Propaganda	2	C-103	4	MTWTh	EHO
1633	466	Current Issues Amer. Demo.	3	C-112	2	Daily	EHO

## PSYCHOLOGY

## Full Session

3635	100	General Psychology	4	B-103	2	MTWTh	RBM
3636	200	Adv. General Psych.	3	B-103	5	MWF	RS
3637	205	Psych. of Adj.	5	B-102	7	Daily	DWJ
3638	309	Human Growth Development	4	S-109	2	Daily	RS
3639	309	Human Growth Development	4	B-108	3	Daily	S
3640	309	Human Growth Development	4	B-107	4	Daily	RS
3641	309	Human Growth Development	4	B-210	5	Daily	S
3642	310	Learning Evaluation	4	C-105	1	Daily	EES
3643	310	Learning Evaluation	4	B-108	4	Daily	EES
3644	310	Learning Evaluation	4	H-104	6	Daily	EES
3645	310	Learning Evaluation	4	B-108	7	Daily	S
3646	346	Social Psychology	4	B-103	3	Daily	HBR
3648	362	Ed. Psychology Stat.	4	B-107	1	MTWTh	JLS
3649	362	Ed. Psychology Stat.	4	B-107	6	MTWTh	DB
3650	416	Prog. Learning	3	B-108	1	MWF	TFN
3651	420	Psych. of Reading	5	Q-312	5	Daily	FBN
3652	444	Tests and Measurements	4	B-102	6	Daily	FBN
3653	447	Psych. of Adolescence	3	C-106	1	MWF	S

## PSYCHOLOGY—Continued

## Full Session

D.P. Course No.	Dept. Course No.	Course Title	Credits	Place	Period	Day	Instructor
3654	449	Abnormal Psychology	4	Q-206	5	Daily	GEG
3655	451	Exper. Psych. Mot.	4	B-217	3	MWF	TBC
3656	451L	Lab A or		B-217	3-4	Tu	TBC
3657	451L	Lab B		B-217	3-4	Th	TBC
3658	452	Expe. Psychology of Learning	4	B-217	1	MWF	MDH
3659	452L	Lab. A or		B-217	1-2	Tu	MDH
3660	452L	Lab. B		B-217	1-2	Th	MDH
3661	453	Theories of Personality	5	S-200	5	Daily	KAB
3662	456	Personal Psychology	3	Q-312	2	MWF	HBR
3665	461	Hist., Syst., Psychology	5	B-109	7	Daily	RBM
3666	469	Adv. Psych. Ed. Stat.	4	B-214	6	MTWTh	JNE
	496	Individual Study	2	S-300		Arr.	WVJ
3674	552	Human Growth, Dev. Adv.	3	H-120	2	MWF	JLS
3675	552	Human Growth, Dev. Adv.	3	S-200	3	MWF	KAB
3676	552	Human Growth, Dev. Adv.	3	B-103	4	MWF	JLS
3677	552	Human Growth, Dev. Adv.	3	Q-210	5	MWF	TFN
3678	552	Human Growth, Dev. Adv.	3	B-103	7	MWF	KAB
	559	Prac. School Psych.	1	B-109	8	TTh	S
3679	560	Theory Prac. Cm.	5	S-209	5	Daily	JER
3680	561	Group Couns. and Guid.	3	B-110	2	MWF	JPL
3681	562	Theory of Learning	5	S-211	5	Daily	LFL
3682	564	Indiv. Test.: Children	5	B-209	2	Daily	CBC
3683	565	Indiv. Test.: Adol. Adult	5	B-209	3	Daily	JWW
3684	566	Personality Assessment	5	B-205	4	Daily	JWW
3685	590.1	Current Issues	3	B-217	8	MWF	MDH
	596	Individual Study	1			Arr.	FBN
3686	598.1	Seminar in School Psych.	1	B-109	8	W	EEJ
3687	600	Thesis	6			Arr.	S
3688	600	Thesis	3			Arr.	S

## First Term

1647	350	Emotional Growth	3	B-101	7	Daily	JDF
1663	457	Psych. Except. Child	3	B-102	3	Daily	DJG
1667	487	Gr. Proc./Leadership	3	H-120	3	Daily	AHH
1668	487	Gr. Proc./Leadership	3	B-214	5	Daily	HBR
1671	488	Gr. Dynam. Indiv.	3	B-214	2	Daily	MLP

## Second Term

2664	457	Psych. Exc. Child	3	B-101	4	Daily	DJG
2669	487	Gr. Proc./Leadership	3	B-214	4	Daily	HBR
2670	487	Gr. Proc./Leadership	3	B-214	1	Daily	JER
2672	488	Gr. Dynam. Indiv.	3	B-214	3	Daily	MLP
2673	499	Sem. Psych.	3	Q-300	7	Daily	TFN

## Radio-Television

## First Term

1689	215	Radio-TV Production	3	KCWS	2	Daily	JGH
------	-----	---------------------	---	------	---	-------	-----

## RECREATION

## Full Session

442		Field Work in Recreation	1	N-100		Arr.	ALB
-----	--	--------------------------	---	-------	--	------	-----

## RECREATION—Continued

## First Term

D.P. Course No.	Dept. Course No.	Course Title	Credits	Place	Period	Day	Instructor
1690	207	Introduction Recreation .....	3	N-113	1	Daily	HT

## Second Term

2691	460	School Recreation Program .....	2	N-116	3	MTWTh	HT
2692	480	Adm. of Recreation .....	3	N-113	6	Daily	HT

## RUSSIAN

## Second Term

2693	254	Russian Cult./Civ. ....	5	Q-300	2, 5	Daily	GRT
------	-----	-------------------------	---	-------	------	-------	-----

## SAFETY EDUCATION

## First Term

1694	437	General Safety Education .....	3	Rec. Cen.	6	Daily	RMA
1696	455	Dr./Tr. Safety Ed. ....	3	Rec. Cen.	7-8	Daily	RMA

## Second Term

2695	440	Hiwy. Safety Traf. Control.....	3	Rec. Cen.	5	Daily	RMA
2697	456	Driver Safety Education .....	3	Rec. Cen.	6-7	Daily	RMA

## SCIENCE EDUCATION

## First Term

1698	322	Sci. Ed. Elementary School.....	3	S-109	1	Daily	JSS
1699	322	Sci. Ed. Elementary School.....	3	S-109	3	Daily	JSS
	496	Individual Study .....	2-4			Arr.	JSS
	497	Individual Study .....	2-4			Arr.	JSS

## SOCIAL SCIENCE

## First Term

1708	420	Meth./Mat. Elem. ....	3	A-405	5	Daily	TMH
1709	420	Meth./Mat. Elem. ....	3	B-109	3	Daily	EBJ
1710	420	Meth./Mat. Elem. ....	3	B-210	8	Daily	JDO

## Second Term

2786	420	Meth./Mat. Elem. ....	3	B-210	8	Daily	EBJ
2711	420	Meth./Mat. Elem. ....	3	B-210	1	Daily	JDO

## SOCIOLOGY

## Full Session

3700	107	Principles of Sociology.....	4	C-105	2	MTWTh	VBS
3701	145	Social Problems .....	5	C-107	3	Daily	REC
3702	250	Industrial Sociology .....	5	C-106	4	Daily	VBS
3704	346	Crime/Delin. ....	5	C-225	5	Daily	REC

## SOCIOLOGY—Continued

## First Term

D.P. Course No.	Dept. Course No.	Course Title	Credits	Place	Period	Day	Instructor
1703	265	Minority Groups .....	3	C-225	3	Daily	VJO
1705	348	Marriage and Families.....	3	Q-210	2	Daily	VJO
1706	355	Culture and Personality .....	3	C-107	6	Daily	VBS
1707	445	Social Strat. ....	3	C-225	1	Daily	REC

## SPANISH

## First Term

1736	151	1st Year Spanish .....	5	Q-210	6-7	Daily	LCV
1738	261	Elem. Convers. and Comp. ....	2	C-210	8	MTWTh	LCV

## Second Term

2737	152	1st Year Spanish .....	5	Q-210	6-7	Daily	LCV
------	-----	------------------------	---	-------	-----	-------	-----

## SPECIAL EDUCATION

## Workshops

783	440AS	Admin. and Superv. of Special Ed. Programs .....	3	H-121	2-7	Daily	EW
-----	-------	--	---	-------	-----	-------	----

## Full Session

3742	413	Psy./Ed. Mn. Rt. ....	4	Q-207	6	MTWTh	HSH
3745	415	Ch. Beh. Problems .....	4	S-200	7	MTWTh	AL
3746	416	Educ. of Distrbd and Prob. Children .....	4	X-14	3	MTWTh	AL
3748	421	Prin. Rem. Ed. ....	4	C-111	5	MTWTh	LLW
3749	425	Ed. Slow Learner .....	3	S-100	7	MWF	LL
3752	433	Tehng Bright and Gftd Chldn....	4	B-210	2	MTWTh	DAM
3753	437	Tehng Bright and Gftd Chldn....	4	C-227	4	MTWTh	S
3754	442	Diag. Teach. in Rem. Ed. ....	4	C-105	7	MTWTh	LLW
3763	463	Spec. Diagnostic Techniques .....	3	S-209	6	MWF	EEJ
3767	490	Sem. Sed. Prob. ....	4	Q-312	6	MTWTh	REM
3768	499	Sem. Sp. Ed. ....	4	B-205	2	MTWTh	S
3769	533	Methods and Tech. of Tech. Disturbed .....	4	Q-301	5	MTWTh	LL
3770	585	Adm. and Superv. of Sp. Ed. Program .....	4	Q-312	3	MTWTh	REM

## First Term

1739	343	Ed. Excep. Children .....	3	B-101	6	Daily	SR
1740	343	Ed. Excep. Children .....	3	B-101	2	Daily	DJG
		Curric. and Prob. of Mnt. Handicapped .....	4	X-14	1	Daily	HSH
1743	414	Prob. Teach Trnabl. Ment. Ret....	4	B-205	7	Daily	SS
1750	428	Remedial Reading .....	3	E	1-4	Daily	WJH
1755	446	Dir. OBS Sped. ....	4		4	Arr.	DAM
	448	Emot. Dist. and Soc. Maladj.....				Arr.	
	448.1	Educable Ment. Ret. Child.....				Arr.	
	448.2	Trainable Ment. Ret. Child.....				Arr.	
	448.3	Remedial Education .....				Arr.	
1757	457	Psych. of Except. Children.....	3	B-102	3	Daily	DJG
1758	457	Psych. of Except. Children.....	3	S-207	2	Daily	LL



## SPECIAL EDUCATION—Continued

## First Term

D.P. Course No.	Dept. Course No.	Course Title	Credits	Place	Period	Day	Instructor
1761	460	Couns. Parents Except. Children	3	B-205	1	Daily	S
1764	467	Maladjusted Children	3	B-214	4	Daily	S
1766	467	Maladjusted Children	3	B-214	7	Daily	SR
	496	Individual Study	2			Arr.	S
	497	Individual Study	2			Arr.	S
	596	Individual Study	1-6			Arr.	S

## Second Term

2741	343	Educating Except. Children	3	B-101	5	Daily	DJG
		Cur. and Probl. of Mnt. Handicapped	4	C-229	1	MTWTh	HSH
2744	414	Remedial Arithmetic	2	B-109	4	MTWTh	JAS
2751	429	Dir. OBS Sped.	3			Arr.	S
2756	446	Psych. Except. Children	3	B-101	4	Daily	DJG
2759	457	Psych. Except. Children	3	B-108	2	Daily	LL
2760	457	Couns. Parents Except. Children	3	B-109	2	Daily	REM
2762	460	Maladjusted Children	3	Q-207	4	Daily	AL
	496	Individual Study	2			Arr.	S
	497	Individual Study	2			Arr.	S
	596	Individual Study	1			Arr.	S

## SPEECH AND DRAMA

## Workshops

729	440	Childhood Lang. Problems	6	Q-304	4-8	Daily	HAD
730	440	Children's Creative Drama	6	Q-300	1-4	Daily	OWW

## Full Session

3712	105	Introduction to Theatre	3	Q-301	4	MWF	MLS
3713	107	Introduction to Drama	3	Q-304	1	MWF	MLS
3716	201	Introduction to Drama	3	Q-206	1	MWF	ALL
3717	201	Public Speaking	3	Q-206	2	MTTh	JME
3718	201	Public Speaking	3	Q-206	4	MTTh	JME
3719	201	Public Speaking	3	Q-206	6:30 p.m.	Tu	ALL
3720	201	Public Speaking	3	Q-206	6:30 p.m.	Th	ALL
3722	253	Exposition	3	Q-210	4	MWF	ALL
3723	266	Theory Play Production	3	Q-207	7	MWF	MLS
3724	388	Clinical Practice	2	Q-215		Arr.	OWW
3725	389	Clinical Practice	2	Q-215		Arr.	OWW
3733	478	Speech Corr. Clsrm. Teaching	3	Q-206	6	MWF	OWW
3734	491	Adv. Clinical Methods	3	Q-215	6-8	Tu	OWW

## First Term

1714	141	Voice and Articulation	2	Q-210	4-5	TTh	JGH
1721	243	Oral Reading	3	Q-206	7-8	MTTh	GPM
1726	420	Tchn. Speech in Elem. Sch.	3	Q-304	6:30 p.m.	TTh	S
1731	446	Oral Rdng. Children's Lit.	3	Q-207	3-4	MTTh	GPM
1732	455	Rehab. of Hard of Hearing	4	Q-210	7-8	MTW	DAP
1735	567.2	Sem. Audiology	4	Q-210	7-10 p.m.	M	DAP

## SPEECH AND DRAMA—Continued

## Second Term

D.P. Course No.	Dept. Course No.	Course Title	Credits	Place	Period	Day	Instructor
2715	141	Voice and Articulation	2	Q-210	4-5	TTh	NSH
2727	420	Tchn. Speech in Elem. Sch.	3	Q-304	1-3	TTh	S
2728	428	Tchn. Speech in Sec. Sch.	3	Q-207	1-2	MTTh	NSH

## TECHNICAL AND INDUSTRIAL EDUCATION

## Full Session

3417	165	Engineering Drawing	3	Q-302	6-7	MWF	SAD
3418	269	Basic Electricity	5	I-102	6-7	Daily	JWM
3421	365	Engineering Drawing 2	3	Q-302	6-7	MWF	SAD
3423	450	Adv. Furn. Con.	5	I-104	1-2	Daily	SAD
3424	455	Gen. Metals	5	I-107	1-2	Daily	WB
3425	474	Intermediate Electronics	3	I-102	3-4	MWF	JWM

## First Term

1420	357	Welding and Forging	3	I-107	3-4	MWF	WB
1422	431	Plng. Instruct. Material	2	I-101	1-2	MTWTh	RMF
1426	550	Adv. Studies Woodworking	3	I-104	1-2+Arr.	Daily	SAD
1427	555	Adv. Studies Metalworking	3	I-107	1-2+Arr.	Daily	WB

## Second Term

2419	356	Sheet Metal	3	I-107	3-4	Daily	RMF
------	-----	-------------	---	-------	-----	-------	-----

## ZOOLOGY

## Full Session

3772	270	Human Physiology	3	S-100	4	MWF	CAW
3773	361	Adv. Invertebrate Zoology and Lab.	5	S-109	5	TTh	GWC
				S-106	6-7	TTh	GWC
3774	372	General Physiology and Lab.	5	S-109	6	MWF	SRJ
				S-105	6-7	TTh	SRJ
3775	472	Nat. History Invertebrates and Lab.	5	S-109	4	MWF	SRJ
				S-106	7-8	MW	SRJ
	496	Individual Study	2			Arr.	S
	497	Individual Study	2			Arr.	S

## Second Term

2771	152	General Zoology and Lab.	5	S-109	3	Daily	JML
				S-106	4-5	Daily	JML

# FACULTY FOR SUMMER SESSION

## AEROSPACE EDUCATION

Robert H. Benesh, M.Ed. . . . . Aerospace Education

## DEPARTMENT OF ART

J. John Agars, M.F.A. . . . . Instructor in Art  
 E. Frank Bach, M.A. . . . . Associate Professor of Art  
 Richard T. Doi, M.A. . . . . Lecturer in Art  
 Edward C. Haines, M.A.E. . . . . Associate Professor of Art  
 Louis A. Kollmeyer, Ed.D. . . . . Professor of Art  
 Christos J. Papadopoulos, M.F.A. . . . . Instructor in Art  
 Reino W. Randall, M.A. . . . . Associate Professor of Art  
 James M. Sahlstrand, M.F.A. . . . . Lecturer in Art  
 Margaret M. Sahlstrand, M.F.A. . . . . Instructor in Art  
 Edna M. Spurgeon, M.A. . . . . Associate Professor of Art  
 Donald P. Tompkins, M.F.A. . . . . Assistant Professor of Art

### Visiting Faculty:

Howard L. Tollefson . . . . . Instructor of Art (Stage V)  
 Ceramics and Weaving, San Fernando Valley State College, Calif.  
 B.F.A., Oklahoma University; M.F.A., Cranbrook Art Academy  
 Larry Whittaker . . . . . Instructor, University of Arizona  
 B.S., University of Cincinnati.

## DEPARTMENT OF BIOLOGICAL SCIENCES

William W. Barker, M.S. . . . . Assistant Professor of Biology  
 Glen W. Clark, Ph.D. . . . . Associate Professor of Biology  
 Philip C. Dumas, Ph.D. . . . . Associate Professor of Biology  
 Virginia P. Harden, Ph.D. . . . . Associate Professor of Biology  
 Sheldon R. Johnson, M.A. . . . . Assistant Professor of Zoology  
 Edward P. Klucking, Ph.D. . . . . Associate Professor of Biology  
 Janet M. Lowe, S.M. . . . . Associate Professor of Biology  
 Marshall W. Mayberry, Ph.D. . . . . Professor of Botany  
 John S. Shrader, Ed.D. . . . . Professor of Science Education  
 Curt A. Wiberg, M.S. . . . . Assistant Professor of Biology  
 Dan L. Willson, Ph.D. . . . . Associate Professor of Biology

### Visiting Faculty:

Dean E. Metter . . . . . Assistant Professor of Zoology,  
 University of Missouri  
 B.S., Eastern Illinois University; M.S., Washington State University;  
 Ph.D., University of Idaho.

## DEPARTMENT OF BUSINESS EDUCATION

Robert A. Flam, M.E. . . . . Assistant Professor of Business Education  
 Kenneth K. Harsha, M.S. . . . . Assistant Professor of Business Education  
 Eugene J. Kosy, Ph.D. . . . . Professor of Business Education

### Visiting Faculty:

Robert I. Place . . . . . Professor of Business, Assistant Chairman,  
 Division of Business, Chico State College, Calif.  
 B.E., Wisconsin State University, Whitewater, Wisconsin; M.A., Northwestern  
 University; Ed. D., University of Southern California.

Joseph R. Barkley . . . . . Acting Director, Business and Distributive  
 Education, State of Florida

## DEPARTMENT OF CHEMISTRY

Leonard C. Duncan, Ph.D. . . . . Assistant Professor of Chemistry  
 Robert D. Gaines, Ph.D. . . . . Associate Professor of Chemistry  
 H. S. Habib, Ph.D. . . . . Assistant Professor of Chemistry  
 R. W. Hasbrouck, Ph.D. . . . . Assistant Professor of Chemistry  
 W. W. Newschwander, Ph.D. . . . . Professor of Chemistry

## DEPARTMENT OF ECONOMICS AND BUSINESS ADMINISTRATION

Charles H. Blake, Ph.D. . . . . Associate Professor of Economics  
 Patrick R. O'Shaughnessy, M.B.A. . . . . Assistant Professor  
 of Business Administration  
 Harold S. Williams, Ph.D. . . . . Professor of Economics

### Visiting Faculty:

Charles R. Spindler . . . . . Chairman, Department of Marketing  
 B. S., N.E. Missouri State Teachers College, Kirksville; M.A., University of Iowa.

## DEPARTMENT OF EDUCATION

Althea E. Adams, M.Ed. . . . . Assistant Professor of Education  
 Alan R. Bergstrom, Ed. D. . . . . Assistant Professor of Education  
 Kenneth R. Berry, Ph.D. . . . . Assistant Professor of Education  
 Gwen B. Bradley, M.Ed. . . . . Assistant Professor of Education

John E. Davis, Ed.D. . . . . Associate Professor of Education  
 F. Dale Elmore, Ed.D. . . . . Associate Professor of Education  
 Clifford A. Erickson, Ed.D. . . . . Associate Professor of Education  
 Joan D. Fennelly, M.S. . . . . Assistant Professor of Education  
 Lloyd M. Gabriel, M.Ed. . . . . Assistant Professor of Education  
 Donald G. Goetschius, Ed.D. . . . . Associate Professor of Education  
 George C. Grossman, D.Ed. . . . . Assistant Professor of Education  
 Ralph D. Gustafson, Ed.D. . . . . Professor of Education  
 Hyrum S. Henderson, Ed.D. . . . . Associate Professor of Special Education  
 Alexander H. Howard, Jr., Ph.D. . . . . Professor of Education  
 Doris E. Jakubek, M.A. . . . . Associate Professor of Education  
 Joseph S. Junell, M.Ed. . . . . Assistant Professor of Education  
 Edith F. Kiser, M.Ed. . . . . Assistant Professor of Education  
 Dohn A. Miller, Ed.D. . . . . Associate Professor of Education  
 Melvin L. Norris, Ed.D. . . . . Assistant Professor of Education  
 John D. O'Donahue, Ed.D. . . . . Assistant Professor of Education  
 Helen D. Patton, M.A.L.S. . . . . Assistant Professor of Education  
 E. Frank Price, Ed.D. . . . . Associate Professor of Education  
 Roy F. Ruebel, Ed.D. . . . . Professor of Education  
 John A. Schwenker, M.A. . . . . Assistant Professor of Education  
 Azella Taylor, M.A. . . . . Assistant Professor of Education  
 Dan A. Unruh, M.Ed. . . . . Assistant Professor of Education  
 Lillian L. Weathers, Ed.D. . . . . Assistant Professor of Education

### Visiting Faculty:

Eldon Bethard. . . . . Professor of Education and Psychology,  
 Southeast Missouri State College, Cape Girardeau. A.A., Lincoln  
 Junior College, B.S., M.S. in Ed., Southern Illinois University;  
 Ed.S., University of Illinois; Ed.D., Colorado State College.

William J. Bohanan. . . . . Librarian, Mehlville School District,  
 Saint Louis; B.S., Georgia Southern; M.A., M.A. (LS) Peabody  
 College.

Lola C. Craig. . . . . Associate Professor of Education,  
 Supervisor of Elementary Student Teachers, Whitman College,  
 Walla Walla, Wash. M.A., Idaho State University.

W. Ned Croshaw. . . . . Principal, Cascade Elementary  
 School, Ellensburg; B.A., M.Ed., Central Washington State Col-  
 lege.

Donna Delchambre. . . . . Librarian, A. C. Davis Senior  
 High School, Yakima, Wash. B.A., University of Utah; B.Ed.,  
 Central Washington State College.

Ned L. Face. . . . . Principal, Parkway Elementary  
 School, Clarkston, Wash. B.A. in Ed., Central Washington State  
 College; M.Ed., University of Puget Sound.

George N. Fallis. . . . . Principal, Mount Tahoma High  
 School, Tacoma, Wash. B.A. in Ed., M.Ed., Western Washing-  
 ton State College.

E. L. French. . . . . Reader in Education, University  
 of Melbourne, Parkville, Victoria, Australia. B.A., B.Ed., Ph.D.,  
 University of Melbourne.

Richard Harris. . . . . Elementary Principal, Ellensburg  
 Wash. B.A. in Ed., M.A. in Ed., Eastern Washington State  
 College.

William J. Harrison. . . . . Fifth and Sixth Grade Reading  
 Teacher, Central Kitsap School District. B.A., Western Wash-  
 ington State College; M.Ed., Central Washington State College.

Ted M. Hendrickson. . . . . Principal, Sunset Elementary  
 School, Selah, Wash. B.A., M.Ed., Central Washington State  
 College.

Edward S. Hiner. . . . . Professor of Education and  
 Director of Teacher Education, St. Benedict's College, Atchison,  
 Kan. B.S., Northwest Missouri State College; M.S., University  
 of Southern California; Ed.D., University of Kansas.

Gerald E. Hosman. . . . . Elementary Principal, Washington  
 School, Ellensburg, Wash. M.Ed., Central Washington State  
 College.

Stanford E. Hosman. . . . . Junior High School Principal,  
 Carmichael Junior High School, Richland, Wash. B.A., M.Ed.,  
 Central Washington State College.

E. LeRoy Isherwood. . . . . Principal, Windsor Elementary  
 School, Cheney, Wash. B.A., Central Washington State College,  
 M.Ed., University of Oregon.

Eugene G. Jackson. . . . . Reading Specialist, Santa Barbara  
 City Schools, Santa Barbara, Calif. Instructor, U. of Cal. Exten-  
 sion, Santa Barbara, Calif. B.S. in Ed., and M.Ed., Certified  
 Reading Specialist, Kent State University, Kent, Ohio.

Harold D. Jones. . . . . Professor of Education and  
 Director of Placement, Fresno State College, Fresno, Calif.

Eugene B. Jump. . . . . Assistant Principal, Morgan Junior  
 High School, Ellensburg, Wash. B.A., M.Ed., Central Washing-  
 ton State College.

- Robert A. Kellman . . . . . Supervisor of Instruction, Selah School District # 119, Selah, Wash. B.S. in Ed., Northern Illinois University; M.Ed., Central Washington State College.
- Stanley Laird . . . . . Teaching Vice-Principal, 6th Grade, Hayward Unified School District, Hayward, Calif. B.A., University of Colorado; M.Ed., Western Washington State College.
- Anthony LaPray . . . . . Assistant Professor of Educational Psychology, Brigham Young University. B.S., M.S., Utah State University; Ed.D., Brigham Young University.
- Lynette Lynch . . . . . School Psychologist, Yakima (Wash.) County Cooperative Program for Special Education. B.S., M.Ed., North Texas State University.
- Gerald A. Magelssen . . . . . Director of Instructional Materials, Whatcom County Schools, Bellingham, Wash. B.A. in Ed., Western Washington State College; M.Ed., Central Washington State College.
- Eugene M. Mason . . . . . Director of Special Education, Auburn, Wash. B.A. in Ed., Central Washington State College; M.A. in Ed., San Francisco State College.
- Melvin L. Miller . . . . . Coordinator of Elementary Education and Assistant Director of the Division of Instruction, Guidance and Pupil Personnel, Kalamazoo Public Schools, Kalamazoo, Mich. B.S. in Ed., Eastern Illinois University; M.A., University of Illinois; D.Ed., University of Illinois.
- Richard E. Mould . . . . . Executive Director of Student Personnel Services, Yakima (Wash.) Public Schools. B.S., M.Ed., University of Puget Sound; Ed.D., Washington State University.
- J. Gilchrist Nelson . . . . . Principal, Mason Junior High, Tacoma, Wash. B.Ed., B.S., Washington State University; M.Ed., University of Puget Sound.
- Shirley Nelson . . . . . First Grade Teacher, White Center Heights Elementary School, Highline School District, Wash. B.A., University of Washington; M.S., Wellesley College.
- Bobbie N. Parson . . . . . Early Childhood Development Center, Franklin-McKinney School District, Montessori Directress, San Jose, California. B.S., Howard Payne College, Brownwood, Texas; MEd., Central Washington State College; Montessori Diploma, Saint Nicholas Training Centre, London, England; Montessori Directress Certificate, American Montessori Society.
- Sam Rust . . . . . Teacher of Emotionally Disturbed and Educable Mentally Retarded Children, East Junior High, Puyallup, Wash. B.A. and B.A. in Ed., Western Washington State College; M.Ed., Central Washington State College.
- Lee O. Scott . . . . . Professor of Philosophy and Religion, Denison University, Granville, Ohio. B.A., Occidental College; B.D., Union Theological Seminary; Ph.D., Yale University.
- Sue Sheridan . . . . . Teacher of the Trainable Mentally Retarded, Nellie Burke Class, Ellensburg, Wash. B.S., and M.Ed., University of Oregon.
- Carol E. Tate . . . . . Elementary School Principal, Yakima, Wash. B.A. and M.Ed., Central Washington State College.
- Arley L. Vancil . . . . . Teacher in Ellensburg Senior High School, Ellensburg, Wash. B.A., University of Washington; M.Ed., Central Washington State College; John Hay Fellow, Yale University.
- Stanley Whitehead . . . . . Principal of Duwamish Elementary School, South Central School District, Seattle, Wash. B.E., Pacific Lutheran University.
- George W. Whitney . . . . . Teacher and Chairman of General Studies Division, Tacoma Community College. A.B., B.E., and M.Ed., University of Puget Sound.
- Robert H. Williams . . . . . Assistant Superintendent, West Valley School District #208, Yakima, Wash. B.A., Washington State University; M.Ed., Oregon State University; Ed.D., Washington State University.

#### DEPARTMENT OF ENGLISH

- H. L. Anshutz, Ph.D. . . . . Professor of English
- David G. Canzler, Ph.D. . . . . Assistant Professor of English
- Frank M. Collins, Ph.D. . . . . Associate Professor of English
- Donald W. Cummings, Ph.D. . . . . Associate Professor of English
- Anne E. Friman, Ph.D. . . . . Assistant Professor of English
- Richard G. Johnson, M.A. . . . . Instructor in English
- Larry L. Lawrence, M.A. . . . . Assistant Professor of English
- Evart K. Lybbert, M.S. . . . . Instructor in English
- Mary E. Mathewson, M.A. . . . . Associate Professor of English
- Keith Rinehart, Ph.D. . . . . Professor of English
- John L. Vifian, M.A. . . . . Assistant Professor of English



**Visiting Faculty:**

- Lyman B. Hagen . . . . . Assistant Professor of Humanities,  
Oregon College of Education, Monmouth, Oregon. B.A., University of Washington; M.A., University of Washington; Ph.D., University of Portland.
- Marion Klobusher . . . . . Chairman, English Department,  
Ellensburg (Wash.) High School. B.A., Whitman College;  
M.A., University of Washington; John Hay Fellow, Columbia University.
- Florence S. MacDonald . . . . . Teacher, High School English and Literature, Ellensburg (Wash.) High School. B.A., University of Washington; B.Ed., Central Washington State College; M.Ed., University of Washington.
- James U. Mauch . . . . . Instructor in English, Foothill College, Los Altos Hills, Calif. B.A., University of the Americas; M.A., University of California, Berkeley, Calif.
- Keith Wright . . . . . Curriculum Coordinator of English Language Arts, Yakima (Wash.) Secondary School. B.A. in Ed., M.Ed., Western Washington State College.

**FAMILY LIFE**

- Luther G. Baker, Ph.D. . . . . Assistant Professor of Family Life

**DEPARTMENT OF FOREIGN LANGUAGE**

- Odette Golden, Ph.D. . . . . Professor of French
- Gordon R. Thomas, M.A. . . . . Lecturer in Russian and Spanish
- Luis C. Valdespino, B.A. . . . . Lecturer in Spanish
- Jacques J. Wachs, M.A. . . . . Assistant Professor of Foreign Languages

**DEPARTMENT OF GEOGRAPHY**

- Robert S. Funderburk, Ph.D. . . . . Professor of Geography
- Otto F. Jakubek, M.A. . . . . Assistant Professor of Geography
- Martin R. Kaatz, Ph.D. . . . . Professor of Geography

**Visiting Faculty:**

- John J. Hidore . . . . . Associate Professor, Indiana University, Bloomington, Indiana. B.A., State College of Iowa; M.A., Ph.D., University of Iowa.

**DEPARTMENT OF HISTORY**

- Walter L. Berg, Ph.D. . . . . Associate Professor of History
- Zoltan Kramar, M.A. . . . . Assistant Professor of History
- Paul E. LeRoy, Ph.D. . . . . Associate Professor of History
- Lawrence L. Lowther, Ph.D. . . . . Assistant Professor of History
- Kent D. Richards, M.S. . . . . Assistant Professor of History
- Floyd H. Rodine, Ph.D. . . . . Professor of History

**DEPARTMENT OF HOME ECONOMICS**

- Fran Bovos . . . . . Assistant Professor of Home Economics and child development specialist
- Myrtle V. Carlson, M.S. . . . . Assistant Professor of Home Economics
- Evelyn Hunter . . . . . Lecturer in Home Economics
- Louise A. Tobin, M.S. . . . . Associate Professor of Home Economics
- Betty L. Trout, M.S. . . . . Assistant Professor of Home Economics
- Jeanette H. Ware, M.S. . . . . Assistant Professor of Home Economics

**Visiting Faculty:**

- Abbie E. Dale . . . . . Home Economics Instructor (Foods and Nutrition), Everett Junior College, Wash. B.S. and M.S., University of Washington.
- Althera Hartley . . . . . Seventh Grade Language Arts and Eighth Grade Home Economics Teacher, Isaac Stevens Junior High, Pasco, Wash. B.A. in Ed., Central Washington State College.

**INDUSTRIAL ARTS**

See Department of Technology and Industrial Education

**JOURNALISM**

- John P. Foster, M.S. . . . . Assistant Professor of Journalism
- John E. Ludtka, M.S. . . . . Assistant Professor of Journalism

**DEPARTMENT OF MATHEMATICS**

- Ralph C. Applebee, M.S. . . . . Assistant Professor of Mathematics
- Dale R. Comstock, Ph.D. . . . . Assistant Professor of Mathematics
- Kenneth O. Gamon, M.S. . . . . Assistant Professor of Mathematics
- Bernard L. Martin, Ph.D. . . . . Associate Professor of Mathematics
- Biswambhar Pahi, Ph.D. . . . . Assistant Professor of Mathematics
- Bruce A. Robinson, M.S. . . . . Associate Professor of Mathematics

## DEPARTMENT OF MUSIC

Herbert A. Bird, Mus. A.D. . . . . . Professor of Music  
 A. Bert Christianson, M.S. . . . . . Associate Professor of Music  
 Charles W. Davis, M.M. . . . . . Assistant Professor of Music  
 John W. DeMerchant, M.A. . . . . . Assistant Professor of Music  
 W. Charles Fuller, M.A. . . . . . Assistant Professor of Music  
 Joseph S. Haruda, Ph.D. . . . . . Associate Professor of Music  
 Wayne S. Hertz, Ed.D. . . . . . Associate Professor of Music  
 John R. Jensen, M.A. . . . . . Assistant Professor of Music  
 E. Gordon Leavitt, M.A. . . . . . Assistant Professor of Music  
 Robert M. Panerio, M.Ed. . . . . . Assistant Professor of Music  
 Sterling J. Price, M.A. . . . . . Assistant Professor of Music  
 G. Russell Ross, D.M.Ed. . . . . . Professor of Music  
 Donald K. Smith, D.M.A. . . . . . Associate Professor of Music

### Visiting Faculty:

Brad Spinney  
 Lorris West

## PHILOSOPHY

Peter M. Burkholder, Ph.D. . . . . . Assistant Professor of Philosophy  
 William H. Desmond, Ph.D. . . . . . Associate Professor of Philosophy  
 John G. Utzinger, Ph.D. . . . . . Associate Professor of Philosophy

## DEPARTMENT OF PHYSICAL EDUCATION

Richard M. Aronson, M.S. . . . . . Assistant Professor of Physical Education  
 Adrian L. Beamer, M.Ed. . . . . . Assistant Professor of Physical Education  
 Eric R. Beardsley, M.S. . . . . . Assistant Professor of Physical Education  
 Janice C. Boyungs, M.S. . . . . . Instructor in Physical Education  
 Dan A. Francisco, M.S. . . . . . Assistant Professor of Physical Education  
 Robert J. Gregson, B.S. . . . . . Lecturer in Physical Education  
 Arthur P. Hutton, M.S. . . . . . Assistant Professor of Physical Education  
 Everett A. Irish, D. Ed. . . . . . Associate Professor of Physical Education  
 Robert N. Irving, Ed.D. . . . . . Associate Professor of Physical Education  
 James L. Kennison, Ed.D. . . . . . Assistant Professor of Physical Education  
 L. Dean Nicholson, M.Ed. . . . . . Assistant Professor of Physical Education  
 James G. Nylander, Ed.D. . . . . . Associate Professor of Physical Education  
 Tom J. Parry, M.A. . . . . . Assistant Professor of Physical Education  
 John M. Pearson, M.A. (Ed.) Assistant Professor of Physical Education  
 A. H. Poffenroth, M.S. . . . . . Associate Professor of Physical Education

Dorothy M. Purser, M.Ed. . . . . . Assistant Professor of Physical Education  
 L. E. Reynolds, M.A. . . . . . Associate Professor of Physical Education  
 Stanley A. Sorenson, M.Ed. . . . . . Assistant Professor of Physical Education  
 Henry A. Turick, M.S. . . . . . Instructor in Physical Education

## PHYSICS DEPARTMENT

Wilbur V. Johnson, Ph.D. . . . . . Associate Professor of Physics  
 Arthur F. Ladd, M.S. . . . . . Associate Professor of Physics  
 Robert C. Mitchell, M.S. . . . . . Associate Professor of Physics

## DEPARTMENT OF POLITICAL SCIENCE

Anne Denman, B.A. . . . . . Assistant Professor of Anthropology  
 Clayton C. Denman, M.A. . . . . . Assistant Professor of Anthropology  
 Elwyn H. Odell, Ph.D. . . . . . Professor of Political Science  
 Jerry M. Silverman, B.A. . . . . . Instructor in Political Science  
 Charles I. Stastny, A.M. . . . . . Assistant Professor of Political Science

## DEPARTMENT OF PSYCHOLOGY

D. Daryl Basler, Ph.D. . . . . . Associate Professor of Education  
 Thomas B. Collins, M.S. . . . . . Assistant Professor of Psychology  
 Colin D. Condit, Ph.D. . . . . . Associate Professor of Psychology  
 Gerald E. Gage, Ed.D. . . . . . Associate Professor of Psychology  
 Darwin J. Goodey, M.S. . . . . . Assistant Professor of Psychology  
 Marion D. Harless, M.A. . . . . . Assistant Professor of Psychology  
 Eldon E. Jacobsen, Ph.D. . . . . . Professor of Psychology  
 Lillian F. Lauer, Ph.D. . . . . . Assistant Professor of Psychology  
 James P. Levell, Ed.D. . . . . . Associate Professor of Psychology  
 Richard B. Morris, M.S. . . . . . Assistant Professor of Psychology  
 Theodor F. Naumann, Ph.D. . . . . . Professor of Psychology  
 Frank B. Nelson, Ph.D. . . . . . Assistant Professor of Psychology  
 Maurice L. Pettit, Ph.D. . . . . . Professor of Education and Psychology  
 Joseph E. Rich, Ed. D. . . . . . Associate Professor of Psychology  
 Howard B. Robinson, M.A. . . . . . Associate Professor of Psychology  
 Emil E. Samuelson, Ph.D. . . . . . Professor of Psychology and Education  
 John L. Silva, M.A. . . . . . Assistant Professor of Psychology  
 Alma C. Spithill, M.Ed. . . . . . Lecturer in Psychology  
 Roger Stewart, Ph.D. . . . . . Assistant Professor of Psychology

**Visiting Faculty:**

- Kathryn A. Beatty..... B.S., University of Oregon; M.S. in Ed., Syracuse University.
- Jay N. Eacker..... Assistant Professor, Whitman College, Walla Walla, Wash. B.A., University of Idaho; M.S. and Ph.D., Washington State University.
- Darrell W. Johnson..... Elementary School Counselor, Renton (Wash.) Public Schools, B.Ed., M.Ed., Central Washington State College.
- James W. Wilkins, Jr..... Clinical Psychologist, Consultant to Department of Institutions, Child Guidance Centers, Chelan County Supt. of Schools, Private Practice, Wenatchee, Wash. B.A. and M.A., Kent State University; Ph.D., Michigan State University.

**DEPARTMENT OF SOCIOLOGY**

- Rodney E. Converse, M.S.W..... Assistant Professor of Sociology
- Virgil J. Olson, Ph.D..... Associate Professor of Sociology
- Virgil B. Smith, M.S..... Assistant Professor of Sociology

**DEPARTMENT OF SPEECH AND DRAMA**

- Donald M. Boileau, M.A..... Instructor in Public Speaking
- Hazel A. Dunnington, M.A... Assistant Professor of Speech and Drama
- Katherine S. Egan, Ph.D..... Associate Professor of Pathology and  
Audiology
- Jon M. Ericson, Ph.D..... Associate Professor of Speech
- John G. Hoglin, M.A..... Assistant Professor of Radio and  
Television
- Norman S. Howell, M.A.... Associate Professor of Speech and Drama
- Albert L. Lewis, M.A..... Assistant Professor of Speech
- Durward A. Porter, B.S..... Lecturer in Speech Pathology and  
Audiology
- Milo L. Smith, M.A..... Assistant Professor of Speech and Drama
- O. W. Wensley, M.A..... Assistant Professor of Speech Pathology

**Visiting Faculty:**

- G. P. Mohrmann..... Assistant Professor of Rhetoric, University of California at Davis. B.A., Washington State University; M.A., University of Washington; Ph.D., University of Florida.

**DEPARTMENT OF TECHNOLOGY  
AND INDUSTRIAL EDUCATION**

- Wilhelm Bakke, M.S..... Associate Professor of Industrial Arts
- Stanely A. Dudley, M.Ed..... Assistant Professor of Industrial Arts
- Ronald M. Frye, Ed.D..... Associate Professor of Industrial Arts

**Visiting Faculty:**

- John W. Martin..... Assistant Professor of Industrial Education, School of Applied Science and Technology, Northern Arizona University, Flagstaff.

**HEBELER ELEMENTARY SCHOOL**

- Grace A. Armstrong, M.S..... Associate Professor of Education
- Paul E. Drotz, M.Ed..... Assistant Professor of Education
- William G. Gaskell, Ed.D..... Associate Professor of Education
- Barbara E. Kohler, M.A..... Associate Professor of Education
- Jack M. Sheridan, D.Ed..... Assistant Professor of Education

**LIBRARY STAFF**

- Malcolm D. Alexander, M.Lib..... Reference Librarian
- Ruth O. Dahlgran, A.M.L.S..... Documents Librarian
- George H. Fadenrecht, M.A., M.A.L.S..... Director of Libraries
- David C. Genaway, A.M.L.S., M.A..... Cataloger
- Mary G. Greene, M.A., B.S.L.S..... Head Cataloger
- Beatrice B. Haan, M.A.L.S..... Reference Librarian
- Frances D. McCall, M.A..... Cataloger
- William D. Schmidt, M.A..... Coordinator of Instructional Aids
- Emil L. Vernei, M.S.L.S., Ph.D..... Head Reference Librarian
- Charles W. Vlcek, Ed.D..... Coordinator of Closed Circuit Television
- Shirley S. Waugh, M.S.L.S..... Periodicals Librarian
- Clifford P. Wolfsehr, M.A., M.A.L.S... Assistant Director of Libraries-  
Public Services
- Charles W. Wright, M.S..... Assistant Director of Libraries-  
Audiovisual Services
- Thomas Yen-Ran Yeh, M.A..... Cataloger

FORM #1

**Form to Accompany \$30.00 Pre-payment**  
(to be sent to the Admissions Office)

FORM #1

To be completed by all students wishing to enroll in  
1967 Summer Session at Central Washington State College.

Mail to:

Admissions Office  
Central Washington State College  
Ellensburg, Washington

Central Washington State College  
Ellensburg, Washington