

3-7-2016

Investigation of superconducting and normal-state properties of the filled-skutterudite system $\text{PrPt}_4\text{Ge}_{12-x}\text{Sbx}$

I. Jeon

K. Huang


D. Yazici

N. Kanchanavatee

Benjamin D. White

See next page for additional authors

Follow this and additional works at: <https://digitalcommons.cwu.edu/cotsfac>

 Part of the [Physics Commons](#)

Authors

I. Jeon, K. Huang, D. Yazici, N. Kanchanavatee, Benjamin D. White, P.-C. Ho, S. Jang, N. Pouse, and M. B. Maple

Investigation of superconducting and normal-state properties of the filled-skutterudite system $\text{PrPt}_4\text{Ge}_{12-x}\text{Sb}_x$

I. Jeon,^{1,2} K. Huang,^{1,2,*} D. Yazici,^{2,3,†} N. Kanchanavatee,^{2,3,‡} B. D. White,^{2,3,§} P.-C. Ho,⁴ S. Jang,^{1,2,||} N. Pouse,^{2,3} and M. B. Maple^{1,2,3,¶}

¹Materials Science and Engineering Program, University of California, San Diego, La Jolla, California 92093, USA

²Center for Advanced Nanoscience, University of California, San Diego, La Jolla, California 92093, USA

³Department of Physics, University of California, San Diego, La Jolla, California 92093, USA

⁴Department of Physics, California State University, Fresno, California 93740, USA

(Received 26 October 2015; revised manuscript received 4 January 2016; published 7 March 2016)

We report a study of the superconducting and normal-state properties of the filled-skutterudite system $\text{PrPt}_4\text{Ge}_{12-x}\text{Sb}_x$. Polycrystalline samples with Sb concentrations up to $x = 5$ were synthesized and investigated by means of x-ray diffraction, electrical resistivity, magnetic susceptibility, and specific heat measurements. We observed a suppression of superconductivity with increasing Sb substitution up to $x = 4$, above which no signature of superconductivity was observed down to 140 mK. The Sommerfeld coefficient, γ , of superconducting specimens decreases with increasing x up to $x = 3$, suggesting that superconductivity may depend on the density of electronic states in this system. The specific heat for $x = 0.5$ exhibits an exponential temperature dependence in the superconducting state, reminiscent of a nodeless superconducting energy gap. We observed evidence for a weak “rattling” mode associated with the Pr ions, characterized by an Einstein temperature $\Theta_E \sim 60$ K for $0 \leq x \leq 5$; however, the rattling mode may not play any role in suppressing superconductivity.

DOI: [10.1103/PhysRevB.93.104507](https://doi.org/10.1103/PhysRevB.93.104507)

I. INTRODUCTION

Filled-skutterudite compounds with the generic chemical formula MT_4X_{12} , where M is an alkali metal, alkaline earth, lanthanide, or actinide, T is a transition metal from the Fe or Co column, and X is a pnictogen [1], have been of interest to physicists and chemists worldwide due to the various types of strongly correlated electron behaviors they exhibit and their potential for use in applications; intriguing properties studied in filled-skutterudite compounds include conventional BCS-type superconductivity, unconventional superconductivity, Kondo-lattice behavior, valence fluctuations, non-Fermi-liquid behavior, heavy-fermion behavior, Kondo-insulator behavior, metal-insulator transitions, magnetic ordering, spin fluctuations, and quadrupolar order [2–16]. Filled-skutterudite compounds also have demonstrated potential viability for use in thermoelectric applications [3, 14, 15].

Among the filled-skutterudite compounds, Pr-based systems, in particular, exhibit unusual physical properties [2, 4, 12, 17, 18], including a metal-insulator transition and a low-field ordered phase in $\text{PrRu}_4\text{P}_{12}$ and $\text{PrFe}_4\text{P}_{12}$, respectively [17, 19]. The heavy-fermion superconducting state in

$\text{PrOs}_4\text{Sb}_{12}$ has attracted considerable interest and was the first such state to be discovered in a Pr-based system. It has a very large Sommerfeld coefficient, $\gamma \sim 500$ mJ/mol K² [4, 11], and exhibits unconventional superconductivity in which there is evidence for time-reversal-symmetry breaking [8], multiple superconducting bands [16, 20, 21], point nodes in the energy gap [21, 22], and potential spin-triplet pairing of electrons [23].

Recently, a new class of filled-skutterudite compounds with the chemical formula $M\text{Pt}_4\text{Ge}_{12}$ has been synthesized and studied [24–30]. The compounds with $M = \text{Sr}, \text{Ba}, \text{La}, \text{Pr},$ and Th have all been found to display superconductivity. For $(\text{Sr}, \text{Ba})\text{Pt}_4\text{Ge}_{12}$, the superconducting transition temperatures, T_c , are ~ 5.4 and 5.1 K, respectively, and BCS-like superconductivity is observed, originating from the Pt-Ge cage structure. For $(\text{La}, \text{Pr})\text{Pt}_4\text{Ge}_{12}$, superconductivity occurs at relatively high temperatures of $T_c \sim 8.2$ and 7.9 K, respectively. Both $\text{LaPt}_4\text{Ge}_{12}$ and $\text{ThPt}_4\text{Ge}_{12}$ exhibit conventional BCS-type superconductivity; however, $\text{ThPt}_4\text{Ge}_{12}$ was also found to be a clean-limit strong-coupling superconductor with $T_c = 4.6$ K.

In contrast, the compound $\text{PrPt}_4\text{Ge}_{12}$ displays unconventional superconductivity that is similar to that of $\text{PrOs}_4\text{Sb}_{12}$ in several ways. Transverse muon spin relaxation (μSR) and specific heat measurements suggest point nodes in the superconducting energy gap of $\text{PrPt}_4\text{Ge}_{12}$, and zero-field μSR measurements provide evidence for time-reversal-symmetry breaking in the superconducting state [28, 31]. The compound $\text{PrPt}_4\text{Ge}_{12}$ exhibits a similar type of multiband unconventional superconductivity [32–34]. A recent study of Ce substitution into the filler sites for Pr ions in $\text{PrPt}_4\text{Ge}_{12}$ reported the suppression of superconductivity with increasing Ce concentration and suggested a crossover from a nodal to nodeless superconducting energy gap or the suppression of multiple superconducting energy bands, revealing a single, robust BCS-type superconducting energy gap [35].

*Present address: State Key Laboratory of Surface Physics, Department of Physics, Fudan University, Shanghai 200433, China.

†Present address: Faculty of Health Sciences, Artvin Coruh University, Artvin 08100, Turkey.

‡Present address: Department of Physics, Faculty of Sciences, Chulalongkorn University, Pathumwan, Bangkok 10330, Thailand.

§Present address: Department of Physics, Central Washington University, 400 East University Way, Ellensburg, Washington 98926-7442, USA.

||Present address: Advanced Light Source, Lawrence Berkeley Laboratory, Berkeley, California 94720, USA.

¶Corresponding author: mbmaple@ucsd.edu

A few studies attempting to understand the effect of chemical substitution within the Pt-Ge cage have been conducted. Upon substitution of Au for Pt in $\text{BaPt}_4\text{Ge}_{12}$, the electronic density of states and superconducting transition temperature T_c increase with increasing Au concentration [36]. The effect of Sb substitution for Ge has also been studied for several Pt-Ge based skutterudite compounds: The compound $\text{CePt}_4\text{Ge}_{12}$ is close to a boundary between Ce intermediate valence and Kondo-lattice behavior [27,37]. By substituting Sb for Ge, $\text{CePt}_4\text{Ge}_{12}$ is tuned from a nearly intermediate-valent paramagnet, through a non-Fermi-liquid phase, and into an antiferromagnetically ordered phase with localized Ce $4f$ magnetic moments [38,39]. A rapid suppression of superconductivity in the system $\text{LaPt}_4\text{Ge}_{12-x}\text{Sb}_x$ with increasing x is observed, accompanied by a decrease of charge-carrier density and an increase of the Seebeck effect at room temperature by about one order of magnitude [40].

Motivated by previous studies, and in order to further investigate the unresolved nature of superconductivity in the compound $\text{PrPt}_4\text{Ge}_{12}$, we undertook a systematic study of the $\text{PrPt}_4\text{Ge}_{12-x}\text{Sb}_x$ system. The evolution of superconducting properties with increasing Sb concentration was investigated by means of x-ray diffraction, electrical resistivity in zero and applied magnetic fields, dc and ac magnetic susceptibility, and specific heat measurements. We observed a suppression of superconductivity with positive curvature in a plot of T_c versus Sb concentration; above $x = 4$, there is no evidence for superconductivity down to 140 mK. Our results from specific heat measurements are similar to those of previous studies, suggesting a possible crossover from a nodal to a nodeless superconducting energy gap or from multiple energy gaps to a single BCS-type superconducting energy gap [32–35]. Evidence for a “rattling” mode for the Pr ions was observed throughout the series, but does not seem to have a strong effect on superconductivity. Conjectures about an observed feature or phase transition of unknown origin above $x = 4$ are also discussed.

II. EXPERIMENTAL DETAILS

Polycrystalline specimens of $\text{PrPt}_4\text{Ge}_{12-x}\text{Sb}_x$ were synthesized by arc-melting on a water-cooled copper hearth under an Ar atmosphere with a Zr getter. The starting materials were obtained from Pr ingots (Alfa Aesar 99.9%), a Pt sponge (99.9999+%), Ge pieces (Alfa Aesar 99.9999+%), and Sb pieces (Alfa Aesar 99%). These starting materials were weighed out in accordance with the stoichiometric ratios and arc-melted, turned over, and arc-melted again a total of five times to promote homogeneity of the samples. The arc-melted boules were then annealed in sealed quartz ampoules (containing 150 torr of Ar at room temperature) for 336 hours at 750 °C. The crystal structure was determined by x-ray powder diffraction (XRD) using a Bruker D8 Discover x-ray diffractometer with $\text{Cu-K}\alpha$ radiation, and XRD patterns were analyzed via Rietveld refinement using the GSAS+EXPGUI software package [41,42]. The electrical resistivity was measured from 1.1 K to 300 K using a standard four-wire method with a Linear Research LR700 ac resistance bridge in a home-built probe in a liquid ^4He Dewar, and down to 140 mK using a commercial ^3He - ^4He dilution refrigerator. Magnetic susceptibility measurements

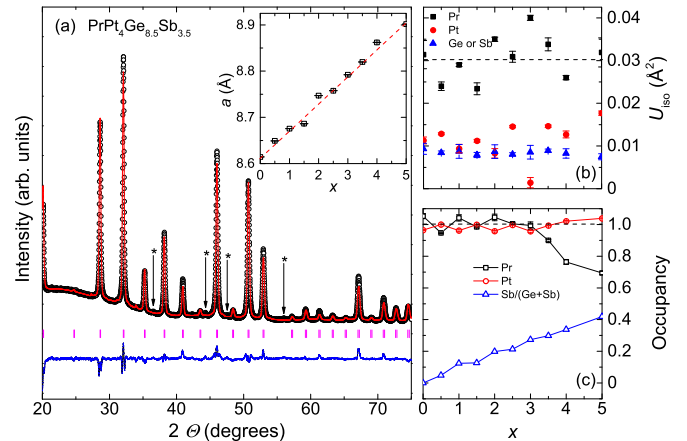


FIG. 1. (a) X-ray diffraction pattern for $\text{PrPt}_4\text{Ge}_{8.5}\text{Sb}_{3.5}$. The black circles represent the experimental data and the red line represents the fit from the Rietveld refinement of the data. The purple vertical marks indicate the position of expected Bragg reflections for the refined $\text{PrPt}_4\text{Ge}_{8.5}\text{Sb}_{3.5}$ crystal structure and the blue line at the bottom is the difference between observed and calculated intensities. The stars indicate Bragg reflections associated with a Pr or PtSb_2 impurity phase. The inset shows a plot of the lattice parameter a versus nominal antimony concentration x . The red dashed line is a guide to the eye. (b) Thermal displacement parameter, U_{iso} , of elements versus Sb concentration. Pr atoms have large values compared with Pt and Ge/Sb atoms. (c) Occupancies of Pr and Pt crystallographic positions and the ratio of Sb to Ge+Sb versus Sb concentration x . A significant decrease of Pr site occupancy is observed for $x \geq 3.5$.

were performed between 2 K and 300 K in magnetic fields up to 7 T using a Quantum Design magnetic property measurement system (MPMS). Alternating current magnetic susceptibility measurements were made down to ~ 1.1 K in a liquid ^4He Dewar using home-built mutual inductance coils. Specific heat measurements were carried out at temperatures down to 1.8 K with a Quantum Design physical property measurement system (PPMS) DynaCool.

III. RESULTS

A. X-ray diffraction

Figure 1 shows results from XRD data for $\text{PrPt}_4\text{Ge}_{12-x}\text{Sb}_x$ ($0 \leq x \leq 5$). All of the XRD patterns are well indexed with the cubic filled-skutterudite crystal structure with space group $Im\bar{3}$. The conventional residual parameters, R_p , are in the range from 0.0910 to 0.1595 for $x \leq 5$. Figure 1(a) shows a representative XRD pattern for the $\text{PrPt}_4\text{Ge}_{12-x}\text{Sb}_x$ system (for $x = 3.5$) and the resultant fit from the Rietveld refinement. The stars indicate the presence of Pr and/or PtSb_2 impurity phases, the amount of which gradually increases with x from ~ 0.2 to 1% by mass ratios for $3 \leq x \leq 5$. Additionally, Ge, PrSb_2 , and PrPtGe impurities were observed; however, the amount of these impurities is less than 1% by mass ratio, suggesting very weak effects on the properties of these samples. For samples with $x \geq 6$, the dominant phase is PtSb_2 ; the mass ratios of PtSb_2 by Rietveld refinement are 6% and 52% for $x = 6$ and 7, respectively, indicating the solubility limit is near or just beyond $x = 6$. This result is consistent

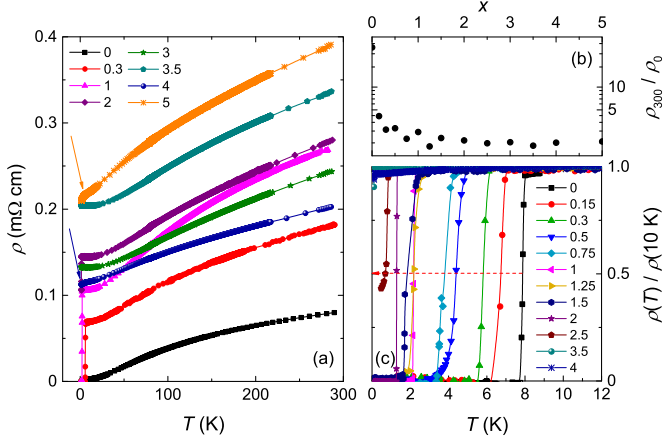


FIG. 2. (a) Electrical resistivity data ρ versus T for selected $\text{PrPt}_4\text{Ge}_{12-x}\text{Sb}_x$ samples with Sb concentrations x shown in the legend. The arrows indicate a weak downturn feature for $x = 4$ and 5 , possibly due to an impurity phase. (b) A semilogarithmic plot of the residual resistivity ratio RRR (ρ_{300}/ρ_0) versus x for $\text{PrPt}_4\text{Ge}_{12-x}\text{Sb}_x$. The decrease in RRR with increasing x displays a positive curvature. (c) $\rho(T)$, normalized to its value at 10 K, versus x for selected $\text{PrPt}_4\text{Ge}_{12-x}\text{Sb}_x$ samples. Superconducting transition temperatures T_c decrease with increasing x and onsets of superconductivity are observed for $x = 3.5$ and 4 . The red dashed arrow is a guide to the eye.

with the observation that the lattice parameter a exhibits a plateau for $x \geq 5$ (data not shown). Since the atomic radius of Sb is larger than that of Ge, it is expected that a increases with increasing Sb concentrations. As seen in Fig. 1(b), we observed that the thermal displacement parameters, U_{iso} , for Pr atoms are large compared with values of Pt or Ge/Sb atoms, which is a common feature in filled-skutterudite systems. Figure 1(c) displays the occupancies of the Pr and Pt crystallographic positions and the relative ratios of Sb to Sb+Ge occupancies, suggesting that the Pr sites are not fully occupied down to ~ 0.7 for $x \geq 3.5$. A similar result is occasionally observed in other filled-skutterudite compounds [43,44]. This result is also consistent with the increase of Pr-based impurity phases for samples with $x \geq 3$.

B. Electrical resistivity

Electrical resistivity, $\rho(T)$, data taken in zero magnetic field are shown in Fig. 2. All concentrations of Sb display metallic behavior, as shown in Fig. 2(a). We show only representative concentrations for visual clarity. The residual resistivity ratio, RRR, versus x is presented in Fig. 2(b); a semilogarithmic plot of (ρ_{300}/ρ_0) versus x , where ρ_{300} is the room temperature resistivity and ρ_0 is the resistivity value right above the superconducting transitions, shows a rapid decrease with increasing x for $0 \leq x \leq 1$, consistent with increased disorder produced by the substitution of Sb for Ge in $\text{PrPt}_4\text{Ge}_{12}$. A general trend of increasing residual resistivity ρ_0 is observed with increasing Sb concentration; however, there is some scatter due to uncertainties in the measurement of the geometrical factors of the resistivity samples. Figure 2(c) displays $\rho(T)$ normalized to its value at 10 K versus x . T_c was defined as the temperature where $\rho(T)/\rho_{10}$ drops to

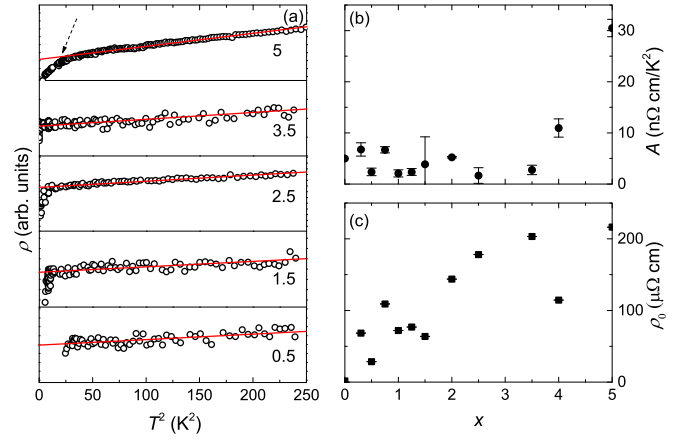


FIG. 3. (a) A plot of ρ versus T^2 for selected concentrations with different y scales for visual clarity. Power-law fits of $\rho(T) = \rho_0 + AT^2$ were performed up to 250 K², indicated by the red solid lines. The dashed arrow indicates the deviation from the fit, possibly due to an impurity phase. (b) Coefficient A versus x . A scatters between 2 and 7 n Ω cm/K² and increases rapidly for $x \geq 4$. (c) The residual resistivity, ρ_0 , from the fits versus x is shown. ρ_0 increases rapidly from ~ 2 to ~ 216 $\mu\Omega$ cm, consistent with disorder introduced by Sb substitution into $\text{PrPt}_4\text{Ge}_{12}$.

50% of its value (i.e., 0.5), and the width of the transition was characterized by the temperatures where $\rho(T)/\rho_{10}$ is 0.9 and 0.1. Even though the superconducting transitions are slightly broadened for $x = 0.5, 1.5,$ and 2.5 , all transitions are still relatively sharp, indicating good sample homogeneity or small amounts of impurity phases in the samples. T_c is suppressed more rapidly with initial Sb substitution with the effect becoming weaker with increasing x , similar to the behavior of the RRR versus x . Superconductivity onsets are observed for $x = 3.5$ and 4 in measurements performed down to 140 mK.

Figure 3(a) shows ρ versus T^2 for representative concentrations, with different y scales for visual clarity. The red solid lines represent least-squares fits to the data with the formula $\rho(T) = \rho_0 + AT^2$ in the temperature range between T_c^2 and 250 K², suggesting Fermi-liquid behavior in $\text{PrPt}_4\text{Ge}_{12-x}\text{Sb}_x$ for $0 \leq x \leq 5$ [35]. Deviations from the fits were observed for the $x = 4$ and 5 samples, which is probably due to the PtSb_2 impurity phase. We also performed a resistivity measurement on the samples with $x = 6, 7,$ and 12 (data not shown); these inhomogeneous samples exhibit the same feature marked by arrows in Figs. 2 and 3 at the same temperature and with the same character. For $x = 6$ and 7 , the amount of the PtSb_2 phase is large; moreover, the $x = 12$ sample turned out to be the compound PtSb_2 , with a very small amount of $\text{PrPt}_4\text{Ge}_7\text{Sb}_5$. The coefficient A scatters between 2 and 7 n Ω cm/K², increasing to 30 n Ω cm/K² for $x \geq 4$. Figure 3(c) shows that values of the residual resistivity ρ_0 versus x , obtained from the fits, increase from ~ 2 to 216 $\mu\Omega$ cm, although the values of ρ_0 fluctuate strongly with increasing x due to uncertainties in the measurement of the geometrical factors of the resistivity samples, as we mentioned previously to explain the behavior seen in Fig. 2(a).

We also measured the upper critical fields, $H_{c2}(T)$, for selected samples. In Fig. 4(a), the data points were determined

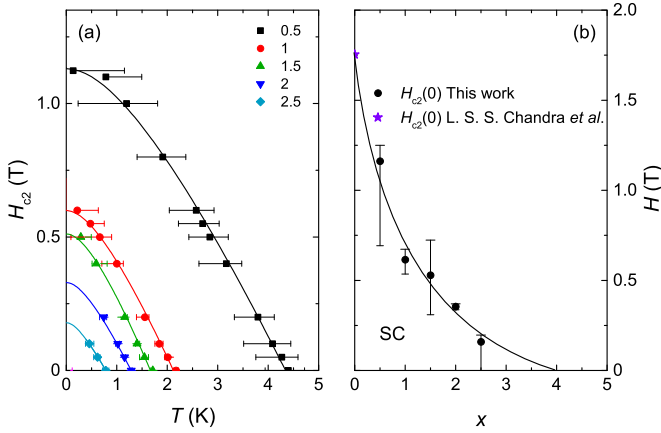


FIG. 4. (a) Temperature dependence of the upper critical field H_{c2} for selected samples. The horizontal bars are the transition widths, determined as described in the text. Solid lines are fits of the WHH theory to the data. (b) Magnetic field H - x phase diagram of $\text{PrPt}_4\text{Ge}_{12-x}\text{Sb}_x$ at $T = 0$ K. The solid line, which is a guide to the eye, represents the rapid suppression of the 0 K value of the upper critical field, $H_{c2}(0)$, with increasing x . The values of $H_{c2}(0)$ were determined from the WHH fits in panel (a).

from the temperature where $\rho(T)$ decreases to 50% of its value in the normal state just above T_c at fixed magnetic fields, and the width of the transitions was defined using the 10% and 90% values of the drop in $\rho(T)$. In general, the superconducting transitions become broader at higher applied magnetic fields. The derivative $(dH_{c2}/dT)_{T=T_c}$ was obtained by fitting straight lines to the data near $H_{c2} = 0$ and estimated values are ~ -0.39 T/K for all concentrations. Using the Werthamer-Helfand-Hohenberg (WHH) model [32,45], where $H_{c2}(0)$ is $-0.693T_c(dH_{c2}/dT)_{T=T_c}$, the temperature dependence of H_{c2} was extracted, as shown in Fig. 4(a). Figure 4(b) reveals a rapid decrease of $H_{c2}(0)$ with increasing x , showing similar behavior to those observed in the rapid suppressions of T_c and the RRR with increasing x . It is noteworthy that the curvature of $H_{c2}(T)$ seems to decrease with increasing x , similar to the behavior previously observed in the $\text{Pr}(\text{Os}_{1-x}\text{Ru}_x)_4\text{Sb}_{12}$ system [46].

C. Magnetic susceptibility

Magnetization divided by applied magnetic field, M/H , versus T data are displayed in Fig. 5(a). We performed measurements under applied magnetic field of $H = 0.5$ T for the $x = 0$ sample and 1 T for the rest of the samples containing Sb. The magnitude of M/H decreases with increasing x ; however, an increase in magnitude and low-temperature upturns were observed for $x \geq 4$, which are expected from the XRD results. The decrease of the estimated Pr occupancy [see Fig. 1(c)] and presence of ~ 1 atomic percent of Pr and PtSb_2 impurity phases in $x = 4$ and 5 samples might be the reasons. The inset of Fig. 5(a) shows superconducting transitions for $x = 0$ and 0.5 under an applied magnetic field $H = 10$ Oe. T_c was defined by the point where zero-field-cooled (ZFC) and field-cooled (FC) data deviated from one another. The superconducting volume fractions were estimated from the ZFC $\chi(T)$ data by using the relation $4\pi\chi \times d$, where d is the molar density of the samples in units of mol/cm^3 .

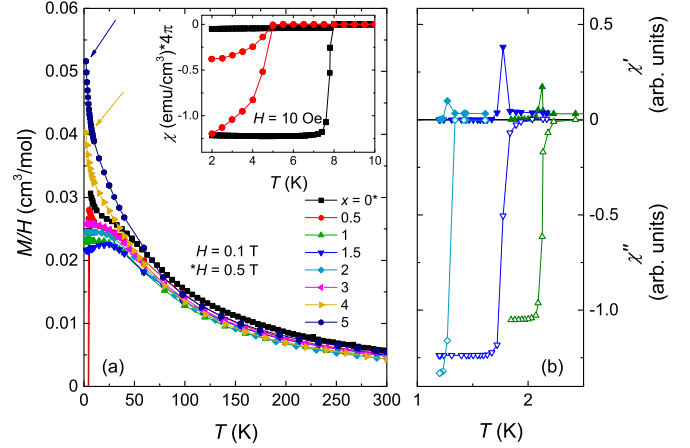


FIG. 5. (a) Magnetization divided by applied magnetic field, M/H , versus temperature T for $\text{PrPt}_4\text{Ge}_{12-x}\text{Sb}_x$ with selected concentrations, measured in applied magnetic fields of $H = 0.5$ T for the sample with $x = 0$ and $H = 1$ T for the samples with $x > 0$. Solid arrows indicate upturns due to small amounts of paramagnetic impurities, as discussed in the text. The inset highlights the Meissner effect and diamagnetic shielding plotting $4\pi\chi$ versus T for the $x = 0$ and 0.5 samples. (b) Alternating current magnetic susceptibility χ' and χ'' versus temperature T for $x = 1, 1.5,$ and 2. (a), (b) Superconducting volume fractions are close to 1. The deviations from unity are presumably due to not accounting for the demagnetization factor.

The superconducting samples with $x = 0, 0.5, 1, 1.5,$ and 2 have volume fractions slightly greater than 1, which results from exclusion of demagnetization factor corrections in this analysis; nevertheless, these results offer strong support for bulk superconductivity in the system $\text{PrPt}_4\text{Ge}_{12-x}\text{Sb}_x$.

We fit the M/H versus T data in Fig. 5(a) to a Curie-Weiss law in the temperature range from 75 to 300 K,

$$M/H = C_0/(T - \Theta_{\text{CW}}), \quad (1)$$

where C_0 is the Curie constant and Θ_{CW} is the Curie-Weiss temperature. The average effective magnetic moment, μ_{eff} , of the Pr ion is extracted from the relation $C_0 = \mu_{\text{eff}}^2 N_A / 3k_B$, where N_A is Avogadro's number and k_B is Boltzmann's constant. The best fit values are shown in Fig. 6. Values of μ_{eff} scatter around $3.58\mu_B$, the value for Pr^{3+} free ions, calculated using Hund's rules. The Curie-Weiss temperatures, Θ_{CW} , are nearly independent of x with a value of ~ -10 K. Real and imaginary components of the alternating current magnetic susceptibility, χ' and χ'' , respectively, for the samples with $x = 1, 1.5,$ and 2 are shown in Fig. 5(b). Clear signatures of superconductivity were observed and T_c was defined as the temperatures where χ'' drops sharply.

Isothermal magnetization measurements were also performed at 2 K under applied magnetic fields up to 7 T (data not shown). We observed a rapid suppression of superconductivity below 1 T and above that, paramagnetism was observed; however, slight curvatures in the isothermal magnetization for the samples with $x = 4$ and 5 were seen, possibly due to small concentrations of paramagnetic impurities, as we discussed in previous sections. In order to roughly estimate the concentrations of paramagnetic impurities, Gd was used

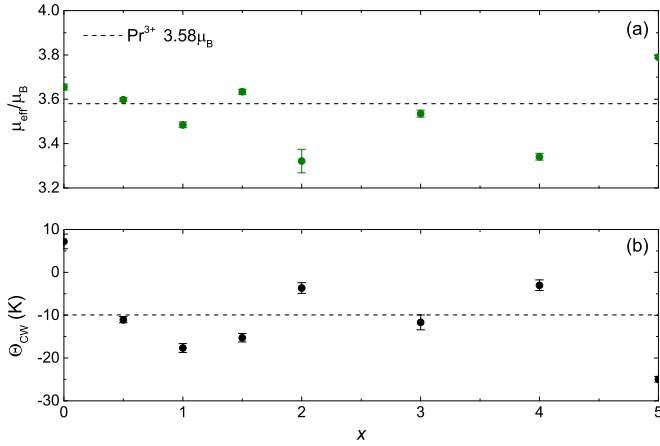


FIG. 6. (a) and (b) Effective magnetic moment (μ_{eff}/μ_B) and Curie-Weiss temperature Θ_{CW} versus x from the Curie-Weiss fits to M/H data. μ_{eff}/μ_B values scatter around $\mu_{\text{eff}} = 3.58\mu_B$, the value expected for the Pr^{3+} free ion, indicated by the dashed line. Both μ_{eff}/μ_B and Θ_{CW} are nearly x independent. The dashed line in (b) is a guide to the eye.

as a standard impurity and assumed to be located at the Pr sites. This choice was arbitrary; it could be other lanthanide ions on the Pr site or $3d$ transition metal ions such as Fe on the Pt site. The impurity concentration (N/V) was determined in two ways: Curie law fits to the upturns at low temperatures and the procedure described in Ref. [47], using isothermal magnetization data. For the Curie law fits, we used the relation $N/V = 3C_0k_B/(N_A\mu_{\text{eff}}^2)$, where μ_{eff}^2 is the effective magnetic moment of Gd ions ($7.94\mu_B$). Both methods yielded estimates of the impurity concentration of about 1% ~ 2% of the lanthanide ions, consistent with the results from XRD measurements. Since we have evidence for larger amounts of impurities in the samples with high Sb concentrations, we excluded other possibilities for the upturn at low temperatures, such as a change in the crystalline electric field ground state of the Pr ions.

D. Specific heat

Specific heat, C , versus T data are shown in Fig. 7(a). The feature in C/T associated with superconductivity was only observed in the $x = 0$ and 0.5 samples (the T_c values for $x \geq 1$ are at temperatures below the low-temperature limit of the PPMS DynaCool). Superconducting transition temperatures T_c were determined with the aid of an idealized entropy-conserving construction (not shown). The resultant T_c values are consistent with the values obtained from the $\rho(T)$ and $\chi(T)$ measurements.

In order to analyze the behavior of the electronic and phonon contributions to C , we first attempted to employ linear fits of C/T versus T^2 to the data, which is a commonly used method [35]. However, this method is inappropriate for $\text{PrPt}_4\text{Ge}_{12-x}\text{Sb}_x$; the electronic specific heat coefficient, γ' , becomes negative for $x \geq 4$, possibly due to low-temperature upturns in the C/T versus T^2 plots (data not shown). The Debye temperature, Θ'_D , extracted from the coefficient β using the equation $C(T)/T = \gamma' + \beta T^2$ increases from ~ 192 K

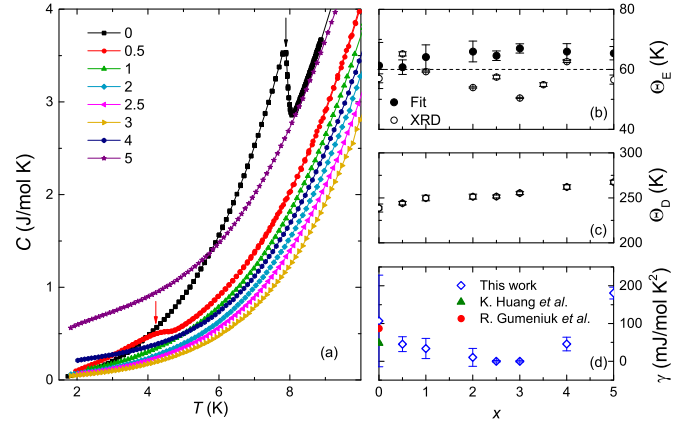


FIG. 7. (a) Specific heat C versus temperature T for $\text{PrPt}_4\text{Ge}_{12-x}\text{Sb}_x$. Arrows indicate superconducting transitions for the $x = 0$ and 0.5 samples. (b) Einstein temperature, Θ_E , versus x . Solid data points are from fits of the specific heat data that include the Einstein model. Open circles are extracted from the relation between Θ_E and thermal displacement parameter, U_{iso} , from Rietveld refinement of the XRD data (see text). Θ_E scatters around ~ 60 K; the dashed line is a guide to the eye. (c) Debye temperature, Θ_D , versus x . Θ_D increases slightly with increasing x . (d) The Sommerfeld coefficient, γ , obtained from fits using the Einstein model, versus x . The electronic specific heat coefficient γ decreases as x increases until $x = 3$, and is enhanced as x increases up to $x = 5$. The value of γ for $\text{PrPt}_4\text{Ge}_{12}$ in this work has a large error bar since we included the Einstein model; thus, the values obtained using other methods are also presented for reference [26,35].

to ~ 271 K over the entire concentration range (data not shown). Possible explanations will be addressed below in the discussion section.

Since we have evidence that the specific heat data need to be analyzed using an alternative method, we considered contributions due to rattling motion of Pr ions or a Pr nuclear Schottky. We reasoned that a nuclear Schottky contribution is not reasonable since it could not fully account for the continuous increase of the Debye temperature, Θ'_D , for all x . We found that introducing an Einstein contribution is more appropriate for the analysis in this study. For example, the Einstein model accurately describes the temperature dependence of the specific heat of filled $\text{Tl}_{0.22}\text{Co}_4\text{Sb}_{12}$ and unfilled $\text{Co}_4\text{Sb}_{12}$ skutterudite compounds [48]. Also, the broad kink observed in the C/T versus T^2 data for $\text{NdOs}_4\text{Sb}_{12}$ was explained by using a combination of Debye and Einstein models [49], so there exists some precedent for including an Einstein model in analysis of specific heat data. If Pr ions behave as Einstein oscillators, the relationship between the thermal displacement parameter, U_{iso} , and the Einstein temperature, Θ_E , is given by the expression

$$U_{\text{iso}} = \frac{\hbar^2}{2m_{\text{Pr}}k_B\Theta_E} \coth\left(\frac{\Theta_E}{2T}\right), \quad (2)$$

where m_{Pr} is the mass of the Pr ion and k_B is the Boltzmann constant. For all x , estimated values of Θ_E are ~ 60 K, as shown in Fig. 7(b). Since there is support for the possibility that Pr ions are behaving like Einstein oscillators, the specific

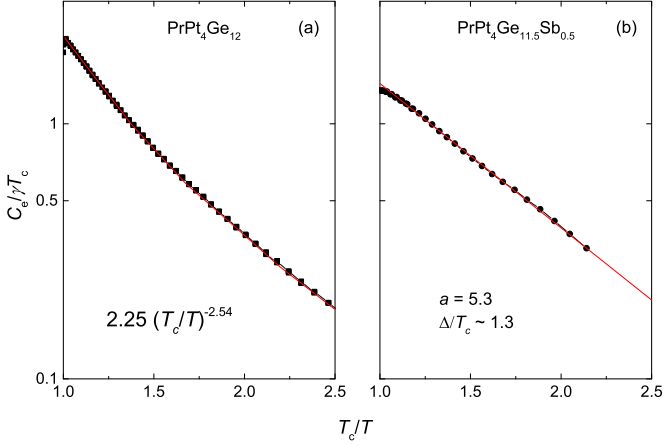


FIG. 8. (a) and (b): Semilogarithmic plots of the electronic contribution to specific heat, $C_e/\gamma T_c$, in the superconducting state versus T_c/T for $\text{PrPt}_4\text{Ge}_{12}$ and $\text{PrPt}_4\text{Ge}_{11.5}\text{Sb}_{0.5}$, respectively. The red lines represent the best fits to the data with $2.25(T_c/T)^{-2.54}$ and $ae^{-\Delta/T_c}$, where $a = 5.3$ and $\Delta/T_c \sim 1.3$ for $\text{PrPt}_4\text{Ge}_{12}$ and $\text{PrPt}_4\text{Ge}_{11.5}\text{Sb}_{0.5}$, respectively.

heat can be expressed as $C = \gamma T + C_{\text{Ein}}(T) + C_{\text{Deb}}(T)$ [49], where

$$C_{\text{Ein}}(T) = r 3R \frac{(\Theta_E/T)^2 e^{(\Theta_E/T)}}{(e^{(\Theta_E/T)} - 1)^2}, \quad (3)$$

$$C_{\text{Deb}}(T) = (17 - r) \frac{12\pi^4}{5} R \left(\frac{T}{\Theta_D} \right)^3, \quad (4)$$

r is the mixing ratio of Pr ions, and R is the universal gas constant. We assumed that only Pr ions are behaving like Einstein oscillators in this analysis; thus, the mixing ratio is constrained to be $r \leq 1$. The least-squares fits of $\gamma T + C_{\text{Ein}}(T) + C_{\text{Deb}}(T)$ to the $C(T)$ data were performed in the temperature range between 1.8 and 30 K and corresponding best-fit values for γ , Θ_E , and Θ_D were extracted. As shown in Fig. 7(b), Θ_E scatters in the range of ~ 60 to 65 K, indicating a consistent result with the values from the XRD analysis using Eq. (2). The Θ_D versus x plot in Fig. 7(c) exhibits a relatively modest increase of Θ_D with x compared to the analysis of $C(T)/T = \gamma' + \beta T^2$ fits to the specific data. The electronic specific heat coefficient γ , presented in Fig. 7(d), first decreases from ~ 107 at $x = 0$ to ~ 1 mJ/mol K² at $x = 3$, and then increases to ~ 180 mJ/mol K² for $x \geq 4$. Both Θ_D and γ values for $x = 0$ are larger than previously reported values, γ' , of 48 and 87 mJ/mol K², respectively [26,35]; however, this is expected due to the different methods used to extract the Θ_D and γ values.

The electronic contribution to the specific heat, $C_e(T)$, was extracted by subtracting the phonon contribution, $C_{\text{ph}}(T) = C_{\text{Ein}}(T) + C_{\text{Deb}}(T)$, from the $C(T)$ data. Figure 8 displays semilogarithmic plots of $C_e/\gamma T_c$ versus T_c/T for $\text{PrPt}_4\text{Ge}_{12}$ and $\text{PrPt}_4\text{Ge}_{11.5}\text{Sb}_{0.5}$. The fits to the data were performed in the range $1 \leq T_c/T \leq 2.5$. The red line in Fig. 8(a) demonstrates that $\text{PrPt}_4\text{Ge}_{12}$ is well described by $b(T_c/T)^n$, where $n \sim -2.5$, suggesting multiband superconductivity or nodes in the gap function in this compound [28]. The fit values for b and n are slightly different from the previous report

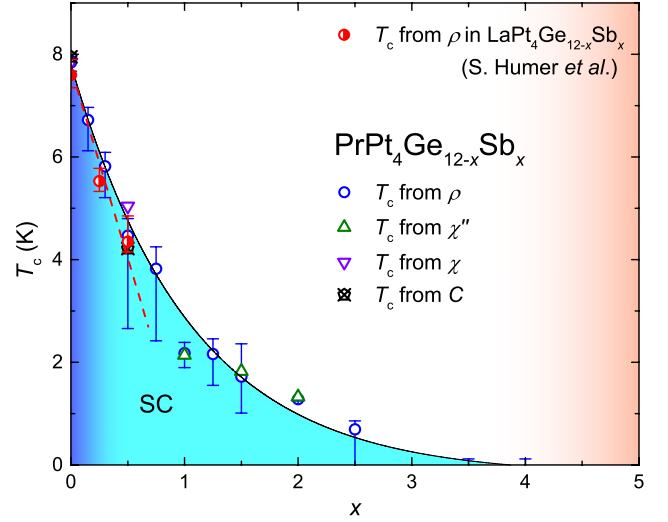


FIG. 9. Phase diagram of the superconducting transition temperature T_c as a function of Sb concentration x based on electrical resistivity, ac and dc magnetic susceptibility, and specific heat measurements. The vertical bars for in the T_c data represent the widths of the superconducting transitions and were derived from the $\rho(T)$ measurements as described in the text. T_c is rapidly suppressed with x up to $x \simeq 4$, and only the onset of superconductivity is observed for $x \geq 3.5$ in measurements performed down to 140 mK. The gradient-filled area of the SC region under the T_c versus x curve indicates the change of the superconducting energy gap. The red dashed line shows the suppression of superconductivity observed in $\text{LaPt}_4\text{Ge}_{12-x}\text{Sb}_x$ [40].

[35], because different phonon contributions to the specific heat were subtracted. Figure 8(b) shows that the sample with $x = 0.5$ can be fitted by an exponential temperature dependence, $ae^{-\Delta/T_c}$, where a is a fitting parameter and Δ is the superconducting energy gap. The coefficient a is around 5.3 and Δ/T_c is ~ 1.3 , which is somewhat smaller than the value of 1.76 from the BCS prediction of weak-coupled superconductivity. This change from power-law to exponential temperature dependence is similar to behaviors observed in previous reports for the $\text{Pr}(\text{Os}_{1-x}\text{Ru}_x)_4\text{Sb}_{12}$ and $\text{Pr}_{1-x}\text{Ce}_x\text{Pt}_4\text{Ge}_{12}$ systems [35,50] and could be explained by a crossover in the structure of the superconducting energy gap from one containing point nodes to one that is nodeless, or a suppression of one or more superconducting energy gaps in a multiband superconductor [28,33,34,51].

IV. DISCUSSION

Figure 9 summarizes results from $\rho(T)$, $\chi(T)$, $\chi''(T)$, and $C(T)$ measurements in a phase diagram of superconducting transition temperature T_c versus nominal antimony concentration x . The T_c values were taken from the onset of diamagnetic signals for the $\chi''(T)$ and $\chi(T)$ measurements. For the $C(T)$ measurements, T_c was determined from the results of idealized entropy-conserving constructions [52,53] (data not shown). This suppression of T_c with x is also consistent with the decrease of the upper critical field as shown in Fig. 4(b).

In order to understand the suppression of superconductivity, we need to consider the effects of Sb substitution in this

system, including the increase of disorder, the increase in unit-cell volume, and the increase in electron concentration (electron doping). It has been reported that in Pt-Ge based skutterudite compounds, a large density of states (DOS) at the Fermi level is a common feature, and it is believed to facilitate superconductivity [24,26]. Moreover, soft x-ray valence-band photoemission spectroscopy on $\text{PrPt}_4\text{Ge}_{12}$ and $\text{LaPt}_4\text{Ge}_{12}$ displays almost identical spectra, indicating that the electronic structures for both systems are very similar with one another [54]. Both have a similar T_c near 8 K and exhibit evidence for multiband superconductivity; however, $\text{PrPt}_4\text{Ge}_{12}$ shows time-reversal-symmetry breaking of the superconducting state [31]. Therefore, a comparison of the suppression of superconductivity and the effect of Sb substitution on these two different systems, $\text{LaPt}_4\text{Ge}_{12}$ and $\text{PrPt}_4\text{Ge}_{12}$, may provide new insights. Our careful comparison reveals that there are several similarities and one significant difference [40]. The increase in disorder results in a rapid decrease of RRR (see Fig. 2), indicating a correlation between disorder and the suppression of superconductivity for low x concentrations, consistent with the result in $\text{LaPt}_4\text{Ge}_{12-x}\text{Sb}_x$. The unit-cell volume of superconducting Pt-Ge based skutterudites seems to be uncorrelated or very weakly correlated to their superconducting states, because the changes of T_c upon applied pressure are small or nonmonotonic; T_c is probably more dependent on the electronic structure [55,56]. Humer *et al.* discussed the decrease of the DOS and γ values with Sb substitution, and its role in facilitating a rapid suppression of superconductivity [40]; a very similar decrease of γ values for samples in the range $0 \leq x \leq 3$ is observed in this study.

The response of superconductivity to Sb substitution observed in this study contrasts with what was reported for $\text{LaPt}_4\text{Ge}_{12-x}\text{Sb}_x$. Even though there were no samples with Sb concentrations between $x = 0.5$ and 3 in the $\text{LaPt}_4\text{Ge}_{12-x}\text{Sb}_x$ study, no evidence of superconductivity was observed at $x = 3$ down to 0.4 K; moreover, a first-principles calculation predicts that the system moves toward a metal-to-insulator transition with higher Sb concentration. With these facts in mind, we conjecture that the suppression of superconductivity in $\text{LaPt}_4\text{Ge}_{12-x}\text{Sb}_x$ with x could be faster than and/or different from that of $\text{PrPt}_4\text{Ge}_{12-x}\text{Sb}_x$, as indicated by the red dashed line in Fig. 9. Similarly, a different suppression rate of T_c is observed upon substitution of Ce ions into the La and Pr sites [57]. The observed differences in the suppression of T_c , therefore, could be explained by differing pairing mechanisms in these two systems; $\text{PrPt}_4\text{Ge}_{12}$ exhibits an unconventional type of superconductivity, while $\text{LaPt}_4\text{Ge}_{12}$ is a conventional BCS-type superconductor. However, there is evidence that $\text{PrPt}_4\text{Ge}_{12}$ has multiple isotropic BCS-type energy gaps, which cannot be ruled out from this study [32–34]. Also, the expected behavior associated with point nodes in specific heat measurements on polycrystalline samples is not supported by the results from a single-crystal study: Polycrystalline specimens show a T^3 temperature dependence of the electronic specific heat, which has been attributed to a possible nuclear Schottky anomaly arising from Pr-containing surface contamination [34].

A rattling mode of the rare-earth ion has been observed in several filled-skutterudite compounds [58,59], especially in the $\text{ROs}_4\text{Sb}_{12}$ (R = rare earth) family [60–62]. On the

other hand, the Pt-Ge based skutterudites exhibit no strong evidence for off-center displacements of filler ions; thus, the DOS, composed of Ge- p and Pt- $5d$ states, has more significant effects on various phenomena [30]. However, the introduction of Gd ions into the La site in $\text{LaPt}_4\text{Ge}_{12}$ provides an extra phonon mode with $\Theta_E \sim 24$ K [63]. In this work, a weak “rattling” mode with a value of $\Theta_E \sim 60$ K was estimated. In analogy with the behavior of Gd ions, the introduction of Sb ions into the Pt-Ge cage might produce additional phonon modes. The value of Θ_E stays roughly constant throughout the entire range of x , suggesting that the rattling motion is independent of x ; rattling in the $\text{PrPt}_4\text{Ge}_{12-x}\text{Sb}_x$ systems does not seem to have significant effects on either the superconducting state or the localized Pr^{+3} electronic configuration, consistent with the x -independent behavior of μ_{eff}/μ_B as seen in Fig. 6(a).

We are currently unable to definitively address the relationships among the Pr site occupancy, rattling dynamics, and the observed enhancement of electronic correlations for $x \geq 4$ samples. It has been reported that the partial filling of the Pr sites does not have a significant effect on the superconducting properties of $\text{PrPt}_4\text{Ge}_{12}$ [64]. A Pr Schottky anomaly could make it difficult to properly analyze the specific heat data [34], possibly leading to an artificial enhancement of γ . The presence of small concentrations of impurities could also potentially be responsible for an anomalous enhancement of the specific heat at low temperature for higher x [see Fig. 7(a)]. All of these factors complicate our ability to clearly determine the phenomena or phase that occurs in the gradient-filled region for $x \geq 4$ in Fig. 9. In order to have a better understanding of not only the features in the properties of samples with high Sb concentrations, but also the nature of superconductivity in $\text{PrPt}_4\text{Ge}_{12}$, future research such as neutron scattering, ultrasonic, or NMR-NQR measurements on high-quality single-crystalline specimens will be necessary.

V. CONCLUDING REMARKS

We have studied the superconducting and normal-state properties of $\text{PrPt}_4\text{Ge}_{12}$ -based pseudoternary compounds in which Sb has been substituted for Ge. Polycrystalline samples of $\text{PrPt}_4\text{Ge}_{12-x}\text{Sb}_x$ with Sb concentrations up to $x = 5$ were investigated via x-ray diffraction, electrical resistivity, magnetic susceptibility, and specific heat measurements. We observed a suppression of superconductivity with increasing Sb substitution up to $x = 4$, above which no signature of superconductivity was observed down to 140 mK. The electronic coefficient of specific heat γ decreases with increasing Sb concentration in the superconducting region, indicating that the density of states might be an important parameter that facilitates superconductivity. The specific heat data for $x = 0.5$ exhibit an exponential temperature dependence in the superconducting state, suggesting a nodeless superconducting energy gap. A constant “rattling” mode of Pr ions with a value of $\Theta_E \sim 60$ K across the entire substitution range was suggested by Rietveld refinements of XRD data and fits of the Einstein model to specific heat data; however, it does not seem to be correlated with superconductivity in this system.

ACKNOWLEDGMENTS

This work was supported by the US Department of Energy, Office of Basic Energy Sciences, Division of Materials Sciences and Engineering, under Grant No. DE-

FG02-04-ER46105 (characterization and physical properties measurements), and the National Science Foundation under Grant No. DMR 1206553 (low-temperature measurements). Helpful discussions with S. Ran are gratefully acknowledged.

-
- [1] W. Jeitschko and D. Braun, LaFe₄P₁₂ with filled CoAs₃-type structure and isotypic lanthanoid–transition metal polyphosphides, *Acta Crystallogr. B* **33**, 3401 (1977).
- [2] I. Shirovani, T. Uchiumi, K. Ohno, C. Sekine, Y. Nakazawa, K. Kanoda, S. Todo, and T. Yagi, Superconductivity of filled skutterudites LaRu₄As₁₂ and PrRu₄As₁₂, *Phys. Rev. B* **56**, 7866 (1997).
- [3] B. C. Sales, Filled skutterudites, in *Handbook on the Physics and Chemistry of the Rare Earths*, edited by K. A. Gschneidner Jr., J.-C. Bünzli, and V. K. Pecharsky (Elsevier Science, Amsterdam, 2003), Vol. 33, Chap. 211.
- [4] E. D. Bauer, N. A. Frederick, P.-C. Ho, V. S. Zapf, and M. B. Maple, Superconductivity and heavy fermion behavior in PrOs₄Sb₁₂, *Phys. Rev. B* **65**, 100506 (2002).
- [5] E. D. Bauer, A. Slebarski, E. J. Freeman, N. A. Frederick, B. J. Taylor, C. Sirvent, and M. B. Maple, Strongly correlated electron behavior in ROs₄Sb₁₂ (*R* = Ce, Pr) filled skutterudites, *Physica B* **312-313**, 230 (2002).
- [6] M. B. Maple, P.-C. Ho, V. S. Zapf, N. A. Frederick, E. D. Bauer, W. M. Yuhasz, F. M. Woodward, and J. W. Lynn, Heavy fermion superconductivity in the filled skutterudite compound PrOs₄Sb₁₂, *J. Phys. Soc. Jpn.* **71**, 23 (2002).
- [7] D. E. MacLaughlin, J. E. Sonier, R. H. Heffner, O. O. Bernal, B.-L. Young, M. S. Rose, G. D. Morris, E. D. Bauer, T. D. Do, and M. B. Maple, Muon Spin Relaxation and Isotropic Pairing in Superconducting PrOs₄Sb₁₂, *Phys. Rev. Lett.* **89**, 157001 (2002).
- [8] Y. Aoki, A. Tsuchiya, T. Kanayama, S. R. Saha, H. Sugawara, H. Sato, W. Higemoto, A. Koda, K. Ohishi, K. Nishiyama, and R. Kadono, Time-Reversal Symmetry-Breaking Superconductivity in Heavy-Fermion PrOs₄Sb₁₂ Detected by Muon-Spin Relaxation, *Phys. Rev. Lett.* **91**, 067003 (2003).
- [9] R. Vollmer, A. Faißt, C. Pfeleiderer, H. v. Löhneysen, E. D. Bauer, P.-C. Ho, V. Zapf, and M. B. Maple, Low-Temperature Specific Heat of the Heavy-Fermion Superconductor PrOs₄Sb₁₂, *Phys. Rev. Lett.* **90**, 057001 (2003).
- [10] H. Suderow, S. Vieira, J. D. Strand, S. Bud'ko, and P. C. Canfield, Very-low-temperature tunneling spectroscopy in the heavy-fermion superconductor PrOs₄Sb₁₂, *Phys. Rev. B* **69**, 060504 (2004).
- [11] M. B. Maple, N. A. Frederick, P.-C. Ho, W. M. Yuhasz, T. A. Sayles, N. P. Butch, J. R. Jeffries, and B. J. Taylor, Novel strongly correlated electron states in filled skutterudite lanthanide osmium antimonides, *Physica B* **359-361**, 830 (2005).
- [12] W. M. Yuhasz, N. P. Butch, T. A. Sayles, P.-C. Ho, J. R. Jeffries, T. Yanagisawa, N. A. Frederick, M. B. Maple, Z. Henkie, A. Pietraszko, S. K. McCall, M. W. McElfresh, and M. J. Fluss, Multiple ordered phases in the filled skutterudite compound PrOs₄As₁₂, *Phys. Rev. B* **73**, 144409 (2006).
- [13] M. B. Maple, Z. Henkie, W. M. Yuhasz, P.-C. Ho, T. Yanagisawa, T. A. Sayles, N. P. Butch, J. R. Jeffries, and A. Pietraszko, Strongly correlated electron phenomena in Pr-based filled skutterudite compounds, *J. Magn. Magn. Mater.* **310**, 182 (2007).
- [14] M. B. Maple, Z. Henkie, R. E. Baumbach, T. A. Sayles, N. P. Butch, P.-C. Ho, T. Yanagisawa, W. M. Yuhasz, R. Wawryk, T. Cichorek, and A. Pietraszko, Correlated electron phenomena in Ce- and Pr-based filled skutterudite arsenides and antimonides, *J. Phys. Soc. Jpn.* **77**, 7 (2008).
- [15] H. Sato, Y. Aoki, D. Kikuchi, H. Sugawara, W. Higemoto, K. Ohishi, T. U. Ito, R. Heffner, S. R. Saha, A. Koda, K. H. Satoh, K. Nishiyama, R. Kadono, N. Nishida, L. Shu, and D. E. MacLaughlin, Novel features in filled skutterudites containing rare-earth elements with a plural number of 4f-electrons, *Physica B* **404**, 749 (2009).
- [16] L. Shu, D. E. MacLaughlin, W. P. Beyermann, R. H. Heffner, G. D. Morris, O. O. Bernal, F. D. Callaghan, J. E. Sonier, W. M. Yuhasz, N. A. Frederick, and M. B. Maple, Penetration depth, multiband superconductivity, and absence of muon-induced perturbation in superconducting PrOs₄Sb₁₂, *Phys. Rev. B* **79**, 174511 (2009).
- [17] H. Sato, H. Sugawara, T. Namiki, S. R. Saha, S. Osaki, T. D. Matsuda, Y. Aoki, Y. Inada, H. Shishido, R. Settai, and Y. Onuki, Exotic behaviours in the Pr-based filled skutterudites, *J. Phys.: Condens. Matter* **15**, S2063 (2003).
- [18] N. P. Butch, W. M. Yuhasz, P.-C. Ho, J. R. Jeffries, N. A. Frederick, T. A. Sayles, X. G. Zheng, M. B. Maple, J. B. Betts, A. H. Lacerda, F. M. Woodward, J. W. Lynn, P. Rogl, and G. Giester, Ordered magnetic state in PrFe₄Sb₁₂ single crystals, *Phys. Rev. B* **71**, 214417 (2005).
- [19] Y. Aoki, T. Namiki, T. D. Matsuda, K. Abe, H. Sugawara, and H. Sato, Anomalous heavy-fermion and ordered states in the filled skutterudite PrFe₄P₁₂, *Phys. Rev. B* **65**, 064446 (2002).
- [20] G. Seyfarth, J. P. Brison, M. A. Méasson, D. Braithwaite, G. Lapertot, and J. Flouquet, Superconducting PrOs₄Sb₁₂: A Thermal Conductivity Study, *Phys. Rev. Lett.* **97**, 236403 (2006).
- [21] R. W. Hill, S. Li, M. B. Maple, and L. Taillefer, Multiband Order Parameters for the PrOs₄Sb₁₂ and PrRu₄Sb₁₂ Skutterudite Superconductors from Thermal Conductivity Measurements, *Phys. Rev. Lett.* **101**, 237005 (2008).
- [22] K. Izawa, Y. Nakajima, J. Goryo, Y. Matsuda, S. Osaki, H. Sugawara, H. Sato, P. Thalmeier, and K. Maki, Multiple Superconducting Phases in New Heavy Fermion Superconductor PrOs₄Sb₁₂, *Phys. Rev. Lett.* **90**, 117001 (2003).
- [23] E. E. M. Chia, M. B. Salamon, H. Sugawara, and H. Sato, Probing the Superconducting Gap Symmetry of PrOs₄Sb₁₂: A Penetration Depth Study, *Phys. Rev. Lett.* **91**, 247003 (2003).
- [24] E. Bauer, A. Grytsiv, X.-Q. Chen, N. Melnychenko-Koblyuk, G. Hilscher, H. Kaldarar, H. Michor, E. Royanian, G. Giester, M. Rotter, R. Podloucky, and P. Rogl, Superconductivity in Novel Ge-based Skutterudites: Sr,BaPt₄Ge₁₂, *Phys. Rev. Lett.* **99**, 217001 (2007).
- [25] E. Bauer, X.-Q. Chen, P. Rogl, G. Hilscher, H. Michor, E. Royanian, R. Podloucky, G. Giester, O. Sologub, and

- A. P. Gonçalves, Superconductivity and spin fluctuations in {Th,U}Pt₄Ge₁₂ skutterudites, *Phys. Rev. B* **78**, 064516 (2008).
- [26] R. Gumeniuk, W. Schnelle, H. Rosner, M. Nicklas, A. Leithe-Jasper, and Y. Grin, Superconductivity in the Platinum Germanides MPt₄Ge₁₂ (*M* = Rare-Earth or Alkaline-Earth Metal) with Filled Skutterudite Structure, *Phys. Rev. Lett.* **100**, 017002 (2008).
- [27] M. Toda, H. Sugawara, K. Magishi, T. Saito, K. Koyama, Y. Aoki, and H. Sato, Electrical, magnetic and NMR studies of Ge-based filled skutterudites RPt₄Ge₁₂ (*R* = La, Ce, Pr, Nd), *J. Phys. Soc. Jpn.* **77**, 124702 (2008).
- [28] A. Maisuradze, M. Nicklas, R. Gumeniuk, C. Baines, W. Schnelle, H. Rosner, A. Leithe-Jasper, Y. Grin, and R. Khasanov, Superfluid Density and Energy Gap Function of Superconducting PrPt₄Ge₁₂, *Phys. Rev. Lett.* **103**, 147002 (2009).
- [29] F. Kanetake, H. Mukuda, Y. Kitaoka, H. Sugawara, K. Magishi, K. M. Itoh, and E. E. Haller, Superconducting state of filled-skutterudite RPt₄Ge₁₂ (*R* = La, Pr): ⁷³Ge-NQR studies, *Physica C* **470**, S703 (2010).
- [30] R. Gumeniuk, H. Borrmann, A. Ormeci, H. Rosner, W. Schnelle, M. Nicklas, Y. Grin, and A. Leithe-Jasper, Filled platinum germanium skutterudites MPt₄Ge₁₂ (*M* = Sr, Ba, La, Nd, Sm, Eu): Crystal structure and chemical bonding, *Z. Kristallogr.* **225**, 531 (2010).
- [31] A. Maisuradze, W. Schnelle, R. Khasanov, R. Gumeniuk, M. Nicklas, H. Rosner, A. Leithe-Jasper, Y. Grin, A. Amato, and P. Thalmeier, Evidence for time-reversal symmetry breaking in superconducting PrPt₄Ge₁₂, *Phys. Rev. B* **82**, 024524 (2010).
- [32] L. S. S. Chandra, M. K. Chattopadhyay, and S. B. Roy, Evidence for two superconducting gaps in the unconventional superconductor PrPt₄Ge₁₂, *Philos. Mag.* **92**, 3866 (2012).
- [33] Y. Nakamura, H. Okazaki, R. Yoshida, T. Wakita, H. Takeya, K. Hirata, M. Hirai, Y. Muraoka, and T. Yokoya, Comparative photoemission studies on the superconducting gap of the filled skutterudite superconductors LaPt₄Ge₁₂ and PrPt₄Ge₁₂, *Phys. Rev. B* **86**, 014521 (2012).
- [34] J. L. Zhang, Y. Chen, L. Jiao, R. Gumeniuk, M. Nicklas, Y. H. Chen, L. Yang, B. H. Fu, W. Schnelle, H. Rosner, A. Leithe-Jasper, Y. Grin, F. Steglich, and H. Q. Yuan, Multiband superconductivity in PrPt₄Ge₁₂ single crystals, *Phys. Rev. B* **87**, 064502 (2013).
- [35] K. Huang, L. Shu, I. K. Lum, B. D. White, M. Janoschek, D. Yazici, J. J. Hamlin, D. A. Zocco, P.-C. Ho, R. E. Baumbach, and M. B. Maple, Probing the superconductivity of PrPt₄Ge₁₂ through Ce substitution, *Phys. Rev. B* **89**, 035145 (2014).
- [36] R. Gumeniuk, H. Rosner, W. Schnelle, M. Nicklas, A. Leithe-Jasper, and Y. Grin, Optimization of the superconducting transition temperature of the filled skutterudite BaPt₄Ge₁₂ by gold substitution, *Phys. Rev. B* **78**, 052504 (2008).
- [37] R. Gumeniuk, K. O. Kvashnina, W. Schnelle, M. Nicklas, H. Borrmann, H. Rosner, Y. Skourski, A. A. Tsirlin, A. Leithe-Jasper, and Y. Grin, Physical properties and valence state of cerium in the filled skutterudite CePt₄Ge₁₂, *J. Phys.: Condens. Matter* **23**, 465601 (2011).
- [38] M. Nicklas, S. Kirchner, R. Borth, R. Gumeniuk, W. Schnelle, H. Rosner, H. Borrmann, A. Leithe-Jasper, Y. Grin, and F. Steglich, Charge-Doping-Driven Evolution of Magnetism and Non-Fermi-Liquid Behavior in the Filled Skutterudite CePt₄Ge_{12-x}Sb_x, *Phys. Rev. Lett.* **109**, 236405 (2012).
- [39] B. D. White, K. Huang, and M. B. Maple, Probing strong Kondo disorder with measurements of thermoelectric power, *Phys. Rev. B* **90**, 235104 (2014).
- [40] S. Humer, E. Royanian, H. Michor, E. Bauer, A. Grytsiv, M. X. Chen, R. Podloucky, and P. Rogl, From superconductivity towards thermoelectricity: Ge-based skutterudites, in *New Materials for Thermoelectric Applications: Theory and Experiment*, NATO Science for Peace and Security Series B: Physics and Biophysics, edited by V. Zlatic and A. Hewson (Springer, Netherlands, 2013), pp. 115–127.
- [41] A. C. Larson and R. B. V. Dreele, General structure analysis system (GSAS), Los Alamos National Laboratory Report, 1994 (unpublished).
- [42] B. Toby, EXPGUI, a graphical user interface for GSAS, *J. Appl. Crystallogr.* **34**, 210 (2001).
- [43] E. Bauer, S. Berger, C. Paul, M. D. Mea, G. Hilscher, H. Michor, M. Reissner, W. Steiner, A. Grytsiv, P. Rogl, and E. W. Scheidt, Crystal field effects and thermoelectric properties of PrFe₄Sb₁₂ skutterudite, *Phys. Rev. B* **66**, 214421 (2002).
- [44] E. D. Bauer, A. Slebarski, N. A. Frederick, W. M. Yuhasz, M. B. Maple, D. Cao, F. Bridges, G. Giester, and P. Rogl, Investigation of ferromagnetic filled skutterudite compounds EuT₄Sb₁₂ (*T* = Fe, Ru, Os), *J. Phys.: Condens. Matter* **16**, 5095 (2004).
- [45] N. R. Werthamer, E. Helfand, and P. C. Hohenberg, Temperature and purity dependence of the superconducting critical field, *H_{c2}*. III. Electron spin and spin-orbit effects, *Phys. Rev.* **147**, 295 (1966).
- [46] P.-C. Ho, T. Yanagisawa, N. P. Butch, W. M. Yuhasz, C. C. Robinson, A. A. Dooraghi, and M. B. Maple, A comparison of the normal and superconducting state properties of Pr(Os_{1-x}Ru_x)₄Sb₁₂ and Pr_{1-x}Nd_xOs₄Sb₁₂, *Physica B* **403**, 1038 (2008).
- [47] H. G. Lukefahr, O. O. Bernal, D. E. MacLaughlin, C. L. Seaman, M. B. Maple, and B. Andraka, Estimation of the intrinsic magnetic susceptibility of Y_{1-x}U_xPd₃ and UCu_{5-x}Pd_x, *Phys. Rev. B* **52**, 3038 (1995).
- [48] B. C. Sales, B. C. Chakoumakos, D. Mandrus, J. W. Sharp, N. R. Dilley, and M. B. Maple, Atomic displacement parameters: A useful tool in the search for new thermoelectric materials?, *Mater. Res. Soc. Symp. Proc.* **545**, 13 (1998).
- [49] P.-C. Ho, W. M. Yuhasz, N. P. Butch, N. A. Frederick, T. A. Sayles, J. R. Jeffries, M. B. Maple, J. B. Betts, A. H. Lacerda, P. Rogl, and G. Giester, Ferromagnetism and possible heavy-fermion behavior in single crystals of NdOs₄Sb₁₂, *Phys. Rev. B* **72**, 094410 (2005).
- [50] N. A. Frederick, T. A. Sayles, S. K. Kim, and M. B. Maple, Investigation of the double superconducting transition and low-temperature specific heat of Pr(Os_{1-x}Ru_x)₄Sb₁₂, *J. Low Temp. Phys.* **147**, 321 (2007).
- [51] M. Sigrist and K. Ueda, Phenomenological theory of unconventional superconductivity, *Rev. Mod. Phys.* **63**, 239 (1991).
- [52] E. Bonjour, R. Calemczuk, J. Y. Henry, and A. F. Khoder, Anisotropic specific-heat behavior under a magnetic field of a YBa₂Cu₃O₇ single crystal, *Phys. Rev. B* **43**, 106 (1991).
- [53] S. B. Ota, V. S. Sastry, E. Gmelin, P. Murugaraj, and J. Maier, Anisotropic magnetic-field dependence of the specific

- heat in single-crystal-like $\text{YBa}_2\text{Cu}_3\text{O}_{7-x}$, *Phys. Rev. B* **43**, 6147 (1991).
- [54] Y. Nakamura, H. Okazaki, R. Yoshida, T. Wakita, M. Hirai, Y. Muraoka, H. Takeya, K. Hirata, H. Kumigashira, M. Oshima, and T. Yokoya, Electronic structure of the novel filled skutterudite $\text{PrPt}_4\text{Ge}_{12}$ superconductor, *J. Phys. Soc. Jpn.* **79**, 124701 (2010).
- [55] R. T. Khan, E. Bauer, X.-Q. Chen, R. Podloucky, and P. Rogl, Pressure response of novel superconducting $\text{Sr}_x\text{BaPt}_4\text{Ge}_{12}$, *J. Phys. Soc. Jpn.* **77**, 350 (2008).
- [56] N. Foroozani, J. J. Hamlin, J. S. Schilling, R. E. Baumbach, I. K. Lum, L. Shu, K. Huang, and M. B. Maple, Dependence of the superconducting transition temperature of the filled skutterudite compound $\text{PrPt}_4\text{Ge}_{12}$ on hydrostatic pressure, *Physica C* **485**, 160 (2013).
- [57] K. Huang, D. Yazici, B. D. White, I. Jeon, A. Breindel, N. Pouse, and M. B. Maple, A comprehensive study of the chemical substitution effects on superconductivity in $\text{La}_{1-x}\text{M}_x\text{Pt}_4\text{Ge}_{12}$ ($M = \text{Ce}, \text{Th}$) (unpublished).
- [58] V. Keppens, D. Mandrus, B. C. Sales, B. C. Chakoumakos, P. Dai, R. Coldea, M. B. Maple, D. A. Gajewski, E. J. Freeman, and S. Bennington, Localized vibrational modes in metallic solids, *Nature (London)* **395**, 876 (1998).
- [59] Y. Nakai, K. Ishida, K. Magishi, H. Sugawara, D. Kikuchi, and H. Sato, Rattling phonons in the filled skutterudite studied with La-NMR, P-NMR/Sb-NQR, *J. Magn. Magn. Mater.* **310**, 255 (2007).
- [60] T. Yanagisawa, T. Mayama, H. Hidaka, H. Amitsuka, A. Yamaguchi, K. Araki, Y. Nemoto, T. Goto, N. Takeda, P.-C. Ho, and M. B. Maple, Ultrasonic investigation of off-center rattling in $\text{Pr}_{0.55}\text{Nd}_{0.45}\text{Os}_4\text{Sb}_{12}$, *Physica B* **404**, 3235 (2009).
- [61] J.-i. Yamamura and Z. Hiroi, Rattling vibrations observed by means of single-crystal x-ray diffraction in the filled skutterudite $\text{ROs}_4\text{Sb}_{12}$ ($R = \text{La}, \text{Ce}, \text{Pr}, \text{Nd}, \text{Sm}$), *J. Phys. Soc. Jpn.* **80**, 054601 (2011).
- [62] T. Keiber, F. Bridges, R. E. Baumbach, and M. B. Maple, Unusual local disorder in $\text{NdOs}_4\text{Sb}_{12}$ and $\text{PrOs}_4\text{Sb}_{12}$ skutterudites, *Phys. Rev. B* **86**, 174106 (2012).
- [63] F. A. Garcia, R. Gumenuik, W. Schnelle, J. Sichelschmidt, A. Leithe-Jasper, Y. Grin, and F. Steglich, Spin dynamics of s -state ions in the filled skutterudites $\text{La}_{1-x}\text{R}_x\text{Pt}_4\text{Ge}_{12}$ ($R = \text{Gd}, \text{Eu}$), *Phys. Rev. B* **85**, 134402 (2012).
- [64] D. Venkateshwarlu, S. S. Samatham, M. Gangrade, and V. Ganesan, Superconductivity in partially filled skutterudite $\text{Pr}_{0.5}\text{Pt}_4\text{Ge}_{12}$, *J. Phys.: Conf. Ser.* **534**, 012040 (2014).