

1-13-1956

## Campus Crier

Central Washington University

Follow this and additional works at: [http://digitalcommons.cwu.edu/cwu\\_student\\_newspaper](http://digitalcommons.cwu.edu/cwu_student_newspaper)

---

### Recommended Citation

Central Washington University, "Campus Crier" (1956). *CWU Student Newspaper*. Book 823.  
[http://digitalcommons.cwu.edu/cwu\\_student\\_newspaper/823](http://digitalcommons.cwu.edu/cwu_student_newspaper/823)

This Book is brought to you for free and open access by the University Archives and Special Collections at ScholarWorks@CWU. It has been accepted for inclusion in CWU Student Newspaper by an authorized administrator of ScholarWorks@CWU.



# Committees Now Working on REW

Religion Emphasis Week, February 5 through February 9, will bring to a culmination many weeks of planning and organization by the local REW committee, which is headed by Wilma Vice.

"I feel that REW will be a real success this year, mainly because our five speakers have very fine recommendations, and are especially interested in college students. They are well versed on topics of current interest," she said.

## Speakers Named

She named as speakers for REW James Lloyd Stonef, Director, University Christian Mission; Martin L. Harvey, Dean of Students, Southern University, Baton Rouge, La.; Nicholas T. Goncharoff, staff member of the International Committee of YMCA's; The Reverend Otto Breimer, Lutheran Campus Pastor at the University of California in Berkeley; Executive Director of the Lutheran Student Foundation of Northern California, and Father Philip Duffy, Superintendent of Catholic Schools in Seattle.

Miss Vice announced the following committees, with chairmen, advisers, and members named in that order: Arrangements, Don and Dale Mitchell, Dr. George Fetter, Jack Garvin; Assemblies, Leila Dildine, Margaret Scruggs, Kay Jensen, Larry Bowen, Kay Cook, Sandra Taylor; Book Display, Jean Lundberg, John Fuller, Barbara Conrad, Caroline Reuther, Bill Byrne, Janet Radby, Josee Jordan.

Breakfast, Molly Clough, Amanda Hebler, Laura St. George, Jama Goodman, Paul Lambertson, Larry Pinnit; Classroom, Bob Feuchter, Mrs. Anne Morgan, Huberta Peacock, Marylyn Scheba, Dave Hardisty, Linda Coleman, Donna Thompson, Marilyn Grove, James Krockman.

## More Committees

Continuation, John Connot, Larry Bowen, Robert Warne; Faculty, Dr. Russell Ross; Finance, Pete

(Continued on Page 3)

## Chandler Slated For FTA Meeting

Joe Chandler, executive secretary of WEA, will speak on "Student Today—Teacher Tomorrow" at the FTA meeting in the CES auditorium at 6:15 Tuesday night.

Students who didn't join FTA may join this quarter if dues are paid before February 21. All members will receive their FTA calendars by next week, Larry Bowen, group president, said this week.

## Colonial Ball Plans Given

Committee chairmen were announced for the Colonial Ball this week by co-chairmen Lois Bradshaw and Jerry Jones.

Heading committees, which will be chosen by the individual chairmen, are: Wayne Heisserman, advertising; Cherie Winney, Nate Olney, decorations; Marilyn Olberg, entertainment; Phil Lowry, music; Patsy Martin, programs; Mary Jo Woodhead, crown, decorations; SGA council, tickets, clean-up; and Home Ec Club and Spurs, receptionists and servers.

The Colonial Ball, slated for February 24, is sponsored annually by the SGA. The "Hi Fi's" from Yakima have been obtained to play for the dance.

## Drama Group Selects Ten

Ten students were initiated into Maskers and Jesters, the campus drama honorary, at a ceremony held in the Union Wednesday night.

Joanne Risdon, Pat Short, Lora Overman, Dean Tarrach and Dick Wining were inducted as full members. Understudy memberships were given to Roger Berghoff, Gladys Coe, Bruce McAlpine, Cynthia McCament and Dave Patrick.

Full membership requires at least 40 points earned in drama productions, while 20 points are necessary for understudy membership.

Conducting the ceremony were Norman Howell, adviser, Nancy Stevens, Jack Turner, Larry Bowen and Sam Long.

## Winter Quarter Opens With 1461 Students

Winter quarter opened with a total enrollment of 1,461 students, according to the registrar's totals.

With an increase of 80 over a year ago, the enrollment is the largest for winter quarter since 1950. That year the veteran influx swelled registration to a record 1,569.

# Campus Crier

VOLUME 28, NUMBER 8 ELLENSBURG, WASH. FRIDAY, JANUARY 13, 1956



MAKING AN EARLY purchase of tickets for tonight's Winter Wonderland formal are Barbara Karstens, Ken Stern, Shirley Shirley, and Gary Gurley. Doing the selling are Alden Esping, Mrs. Olive Schnebly, CUB manager, and Dave Divilbiss, president of North Hall.

## Filleau Heads Sabre Flight

Clifford Filleau has recently been elected commander of Sabre Flight, an honorary for basic AFROTC students.

Assisting him this year are: Gary Larson, executive officer; Elmer Sagara, adjutant; Darrel Furstnow, operations officer; Donald Mitchell, public relations officer; Dale Mitchell, sergeant-at-arms.

Other sophomores in the group are James Selig, Pat McNeil and Brian Gerards.

Fifteen freshmen were recently selected from applications for membership in Sabre Flight. New members include: Gene Baum, Fred Bittner, Jim Cook, Roscoe Dimock, Norman Geer, Kay Kobata, Stan Langton, Mallory McManus, Donald Morfield, Donald Robertson, Richard Robertson, Dennie Ross, Ken Tauscher, George Winkelseth and Verlynn Zuehlsdorff.

## North Sponsors Formal In CUB

The CUB will be opened for a formal dance for the first time this year when North Hall takes over the Main Lounge for its "Winter Wonderland" tonight.

Students from all the dorms and off-campus will dance to the music of Harley Brumbaugh and his Esquires from 9-12.

## Deadlines Given

Physical examinations for spring quarter student teachers will be given in the gym on women and 8 p.m. for men, the Mon. Jan. 16, at 7 p.m. for division of Education and Psychology announced this week.

Applications for spring quarter student teaching are due not later than Friday, Feb. 10. Application forms may be obtained in, and should be returned to, A-307c, the office in charge of student teaching announced.

North inaugurated the idea of dances in the CUB last year with its first "Winter Wonderland."

"We hope to make this into a Central tradition," Dave Divilbiss, North president, explained.

Other CUB facilities will be available to couples at the dance. The Faculty Lounge will be used for refreshments and one other room will be set aside for wraps.

A decoration motif of fir trees and foil snowflakes will be used.

North Hall's house council is heading arrangements for the dance. Council members are Dave Divilbiss, George Kysyzski, Dave Perkins, Dave Patrick, Walt Wilson, Wayne Roe and Mike Lacey.

Tickets for the affair are \$1.50.

## Hundreds Attend Grand Opening of Recreation Program



GRAND OPENING OF CUB activities Friday night found these six Centralites enjoying one of the new pool tables in the basement. Left to right, Bevelery Morris, Dave Perkins, Mary Brown, Dave Annonen Herb Kramlich and Bob Arnold.

Hundreds of Central students attended the grand opening of the CUB's new recreation program after the Whitworth game Friday night.

Especially popular was the bingo, with five students winning a total of \$30. Melvin Lindauer, Herman Danielson, Les Foster, Joan Pierce and Molly O'Neal were the winners.

## Neither Jackpot Won

Neither the junior jackpot of \$25 or main jackpot of \$50 were won Friday night, so more numbers will be read and a larger jackpot will be offered at the next game. A complete "blackout" is necessary to win the jackpots.

"Bingo is being used to supplement the social activities on campus," Wally Johnson, SGA president, explained. "It will be used as a fill-in whenever there is a place for it. All of the proceeds go back into prizes as it is strictly non-profit."

## Game Room Opens

In the new game room in the basement are two new pool tables and two ping-pong tables, which were also centers of attraction during the evening.

"Pool and ping-pong equipment is available at the snack bar counter," Johnson explained. "The SGA card is required for a deposit, along with a 50 cent an hour charge for using a pool table. For a half hour 25 cents is charged, (Continued on Page 2)

## Kappa Pi Inducts Eight Members

Eight students were initiated into Kappa Pi, Central's art honorary at a ceremony held in Don Baker's Hillcrest apartment Wednesday night.

Initiates are Kathy Arnoldt, Betty Sereson, Gary Brown, Nancy Stevens, Peggy Wood, Carole Michelotti, Stan Day and Charles Smith.

Plans were made for the Beaux Arts ball on February 17, and the annual loan collection. Discussion was held on remodeling the fourth floor hallway of the ad building into a gallery.

## SGA Cards, Pictures Available Next Week

Get your SGA card yet?

Another group of cards have arrived, according to Wally Johnson, SGA president.

SGA council members will be at the information booth at 11-12 and 2-3 daily next week with the cards.

Students will also be able to purchase 2x3 pictures of themselves at 15 cents apiece or 3 for a dollar.

"All students should pick up their SGA cards by the end of next week," Johnson said this week.



## On Christmas Decorations

The Christmas trees have been burned and the decorations have all been stored away for another year . . . but before another Christmas comes to Central, here's a thought.

In addition to competing in the carol competition each year, the living groups also vie for honors in the dorm decoration contest. Last month the SGA announced two prizes of \$10 each for the best decorated women's and men's dormitories.

The judging committee found that much work had gone into the decoration of each of the men's halls. No effort seemed to have been spared in tying in windows, fireplaces, doorways and lighting to carry out a particular holiday theme.

But on viewing the display in the women's halls, the committee was disappointed. The decorations in themselves were fine—but there was no comparison to the remarkable work that was evidenced in Kennedy, Wilson and North—even Carmody's lounge seemed to capture the holiday warmth that was conspicuously absent in the lounges of the women's dormitories.

Sue Lombard was given the same prize as Wilson—at the expense of the other men's dorms. Perhaps next year it would be advisable to judge the larger dorms together instead of splitting them into two groups . . . and the pre-fabs probably merit a contest of their own.

## Presidential By-line

By WALLY JOHNSON  
SGA President

Congratulations to Phil Mattingley and the entire Union Building Program Committee for a job well done. Your entertainment last Friday night in the Union Building was, and I hope it will remain, one of the best received activities I have ever seen on this campus. A mature activity of this sort should certainly provide a social outlet for those students who desire something besides dancing.

Many students have inquired about the existing policy concerning the choice of assemblies. I wonder how many of those students attended the first Winter Quarter S.G.A. Assembly. Those of you who did are now aware that the Assembly Committee has been reorganized in an attempt to fulfill the desires of the many student requests. In addition to the appointment of Dr. Wesley Crum as Chairman, two new student representatives will be added to the committee in the near future. The administration has shown a vital interest in providing the type of assemblies that will interest the students—now, let's show them that we appreciate their cooperation and effort by taking an interest in, and appearing at the assemblies.

While I'm in the mood for handing out bouquets, how about the new features in the CUB? A big new game-room in the basement, the window in the snack bar, the freshly scrubbed walls throughout the building, and the television in the Northwest Lounge merely indicates that someone did something while we were off on vacation. But—who?? Keep this a secret now (so no one will know that we actually are pleased with it), but I know of four sneaky people that didn't go on vacation with the rest of us; instead, they worked like mad to put the building in this deplorable condition—but I promised not to mention the names of Dr. McConnell, Mrs. Schnebly, Mrs. Young and Mrs. Nelson, so I won't mention them at all.

Already we are running into some confusion with the television set. It seems that the cashier in the snack bar is unable to take care of the game-room people, the food and drink lineup, and be available at the beck and call of each person wanting a change of channels on the TV set all at the same time. But let's give her a break, the system is new yet, and it is bound to have some bugs in it. As time goes on it will certainly become more orderly and efficient, so let's cooperate as much as possible.

Well, the milk problem in the dining halls has at long last been solved. A new sanitary type pitcher has been found that the health department will allow us to use. As soon as the pitchers arrive, seconds of milk will be available at the evening meals.

Remember, every Monday night your S.G.A. Council meets in room 203 of the Union Building. Everyone is welcome at these meetings, so come on up and see what is going on in your student government.

Students interested in business may complete a four-year program at Central leading to the Bachelor of Arts degree with a major in economics.

## Sweezy Society

Christmas brought news of at least two holly-time engagements. Lora Lee Lightner and Roger Salisbury announced their engagement to friends over the holidays. Peggy Watts became engaged to Dick Ball of Michigan.

Other recent engagements include Joan Moergli and Bob Estby and Oma Lee Clark and Larry Downey.

Ed and Joyce Culver became the parents of a baby boy in December.

Peggy Conway, now in her last quarter at Central, and Lionel Hayward, a '55 grad, were recently married.

In addition to the above, other new engagements which have been announced are Diane Bishop and Chuck Burdulis; and Carolyn Gowen and Jim Carlton.

Gloria Irvin and Leo Lightner were married last weekend in Wenatchee.

Bill Harriman and Billie Schodde plan to be married this weekend.

## Church Notices

### BEREAN CLUB

The Berean Club is meeting for singing, Bible study, and fellowship at the parsonage, 505 N. Kittitas St., this Sunday at 6 p.m. Food will be served.

### NEWMAN CLUB

Newman Club meets at Maryland Hall this Sunday, at 5:30. Dinner will be followed by a study on "Confirmation," a business meeting, and recreation.

### WESLEY CLUB

"Growing Spiritually" is the topic for discussion at this Sunday's session of the Wesley Club, at the First Methodist Church, Third and Ruby, following supper at 5:30.

## campus crier

Telephone 2-4002 — 2-2191

— Member —  
Associated Press  
Intercollegiate Press  
Associated Collegiate Press

Published every Friday, except test week and holidays, during the year and by-weekly during summer session as the official publication of the Student Government Association of Central Washington College, Ellensburg. Subscription rates, \$3 per year. Printed by the Record Press, Ellensburg. Entered as second class matter at the Ellensburg post office. Represented for national advertising by National Advertising Services, Inc., 420 Madison Ave., New York City.

Editor.....Roger Asselstine  
Associate Editor.....Sylvia Stevens  
Wire Editor.....Cherie Winney  
Sports Editor.....Rollie Dewing  
Assistant Sports Editor, Dave Perkins  
Business Manager.....Roger Salisbury  
Advertising Managers.....  
.....Jeray Holmes, Bill Bourn

Photographers—  
Joe Wilcoxson, Bert Holmes.  
Staff: Marilyn Trolson, Janice Kotchkoe, Sharon Saeger, Laura Williams, Dick Weber, Lila Malet, Dave Ellingson, Shirley Willoughby, Cherie Winney, Henry Lisingoli, Dick Bird, John Daniels, Gary Gurley, Loree Sliffe, Shirley Ann Shirley, Janice Vinson, Cliff Asplund, Diane Chapman and Patti Clark.

Adviser.....Bonnie Wiley

## Gung Ho

By Ah-So

Greetings and felicitations to all you wanderers from the Homeland. Literal translation: Welcome back to your own little Sweezy pagoda.

Ah-So—if honorable ones suffered through the festivities in honor of New Year in such shape as this little flower, my advice to you is go home and sleep if off. It isn't that it is so bitterly frigid out, I am just suffering from that oriental disease known as Results of the Holidays.

Now that parole season is over, it is just peachy keen to see all strange beings back in old environment. Let be known to the wide, wide world, and the freshmen, that the 60 haggard old folk toddling about the campus are not visitors from outer space, or even the capitol.

Those 60 beat up beings are none other than the old student teachers returning to the happy bird-dogging land. Hark, be ye not shocked when this group starts the flinging and flanging of strange words. The words such as meaningful experience, individual differences, core planning, subject matter, and coffee break.

Do not be puzzled because these words and phrases will mean absolutely nothing to you until you have slept through approximately 10 hours of certain classes. I cannot say what these certain classes are, but you will KNOW to which ones I refer. AH-SO. All hail, John Dewey!!

There is more to say but Big Brother is censoring again.

SEE you around—square!

AH-SO

## LITTLE MAN ON CAMPUS

by Dick Bibler



"THIS IS THE MOST IMPORTANT CLASS YOU'LL BE TAKING—SO I'LL EXPECT A LITTLE EXTRA WORK FROM YOU THIS TERM."

## SGA Assembly Features Info

Information about the college — the dining hall committee, assemblies and the CUB recreation program — was given at SGA assembly last week.

"Everything we do at Central is for the welfare of the students," was the opening remark of President McConnell, who illustrated his point in several ways.

Dr. McConnell began by saying that 200 students are receiving scholarships and 300 are employed on campus this year. The variety of facilities provided in the Union frequently cause comments from visitors to the school.

In the library are 60,000 books, 490 different magazines and 14 official documents, Dr. McConnell pointed out. The music library contains 12,000 records, while several hundred records are kept in the audio-visual aids department . . . in addition to 2,000 movies and 1,000 filmstrips.

### RN On Duty

Students will find a registered nurse on duty 24-hours a day at the infirmary. Dr. McConnell added, with the services of a doctor available. Continuous improvements are being made on the campus; during vacation business education rooms were painted, the CUB and pre-fabs were cleaned, the recreation room was finished, and Sue Lombard has a new hot water tank.

### Committee Explained

Don Mitchell, dining hall committee president, gave a brief explanation of the dining hall committee. This group, which consists of representatives of each dorm, meets twice a month to consider suggestions for improvement of the dining service.

Mitchell added that with the arrival of recently-ordered pitchers, two glasses of milk will be available at evening meals. The county health officer approved the new type of pitcher after requests for more milk went through administrative channels.

### Crum Outlines Assemblies

Next on the program was Dr. J. Wesley Crum, chairman of the re-organized assembly committee, who outlined the assemblies for the quarter.

This policy is being carried out this quarter with a student talent hour on Feb. 2. The selection of one of Central's professors, Dr. Funderburk, to appear at an assembly is another step in using campus personnel in the program.

### Programs Reviewed

Dr. Crum briefly reviewed other assemblies for the quarter: Louis Untermeyer, "How to Hate Poetry in One Easy Lesson;" Harry Barton, pantomimist; Louis Fischer, "The U.S. in World Affairs;" Dr. Michael Hagopian, "Pathways through Pakistan;" and programs for REW and a concert by the Central Singers.

## Jimmy Allen, Jim Webster Chosen Dad's Day Chairmen

Jimmy Allen and Jim Webster were named as co-chairmen for Dad's Day, which will be held the weekend of February 18, by the SGA council Monday night.

Marilyn Olberg and Mike Lacey were selected as Blood Drive co-chairmen. February 21 has been set as the day for the blood drive.

Sweezy Day and Homecoming was set for the next two years. This year Sweezy Day will be on May 16, while May 15 will be the holiday next year. The 1956 Homecoming weekend will be October 27, when Central plays Eastern. October 26, 1957, will be the next year's Homecoming date, with CPS as the football foe.

Council members named to the constitution revision committee were Mel Beauchamp, Ann Coulston, Dean Wake and Marilyn Olberg.

Jean Stevens and Russ Jones, WUS co-chairmen, outlined the activities of WUS week for the council.

Discussion was held on furnishing Walnut Grove as a recreation center for the pre-fabs. Some favorable and some unfavorable reports were brought back by dorm representatives.

Jerry Jones gave a financial report for the period ending with the last of November. In the general fund is \$9,988.34.

Mike Lacey was introduced as the North Hall representative to the council, replacing Connie Bankston, who is student teaching.

### NOTICE

Church group officers are reminded that CRIER notices must be turned in by 11 a.m. Monday morning. Notices may be mailed to Mrs. Laura Williams, Box 718, or left in the envelope marked "church notices" on the bulletin board just inside the CRIER office.

## Hundreds Attend

(Continued from Page One)  
but a quarter is the minimum charge. Students must buy their own ping pong balls.

"We would like to offer the pool free, but high maintenance costs demand this charge. Students will be charged the original price for damaging equipment."

### Rules Given

To lessen the chances of breaking the equipment, several regulations have been set up for the game room, according to Johnson.

The pool tables are not to be moved by students, or the guarantee from the company from which they were purchased will be invalid. Plans call for professionals moving the tables several feet apart soon.

Beginning pool players are asked to have experienced players as-

## Looking Back . . .

1955

\$1700 was taken from the business office safe during Christmas vacation.

1954

Central's delegation to the Model United Nations at Los Angeles will represent Iran this year.

1953

Voting on ratification of the Student - Faculty Coordination and Planning Board will take place Monday, according to Dean Thompson, SGA president.

15 years ago

Mr. George Beck, associate professor of geology, is back at his regular post at CWCE after having spent the past quarter in California. Mr. Beck says that he has finished all of his classwork toward a doctor's degree, but that much remains to be done in compiling his report on the fossil woods of the Yakima Valley.

30 years ago

One of the many thrills that the Ellensburg Normal girls get during their quarters work is horseback riding. At the opening of this quarter, 15 girls signed up to take horseback riding as their recreation.





**SGA COUNCIL MEMBERS** include four elected officers and representatives from living groups on campus. Meetings are held every Monday night and are open to all students. Seated, left to right, are Wally Johnson, president; Jerr Jones, vice president; Ann Coulston, Sue; Colleen Moore, secretary; Marilyn Olberg, Kamola. Standing, Hugh Albrecht, social commissioner; Roger Asselstine, CRIER editor; Ross Simmons, pre-fab; Mel Beauchamp, Wilson; Phil Lowry, Vetville; Dean Wake, Off-Campus Men; Mike Lacey, North; Bill Leth, Kennedy. Not present were Connie Nichols, Munson; and Lois Bradshaw, Off-Campus Women.

## Central to Represent Costa Rica At MUN Conference in Corvallis

The sixth annual Model United Nations conference will be held this year at Oregon State College in Corvallis, Ore. on April 4-7. The MUN is an educational convention of student delegations representing various nations in model meetings of the United Nations. It is a four-day convention simulating as many of the committees and sessions of this international organization as possible.

Last year the conference was held at San Francisco during the first week of May, and CWCE students represented the country of Peru.

In past years, Central students have also represented the countries of Turkey, Iran, Iraq, and Pakistan, and the delegation is usually comprised of 10-15 students selected by a student-faculty committee.

CWCE will represent the country of Costa Rica this year. Those students selected to go will begin training during the latter part of January and will continue studying until the first week of April.

The training will involve study of the country of Costa Rica, the structure and functions of the United Nations, international problems with which the UN is concerned, and parliamentary procedure.

The MUN conference is approved and financed by the SGA. All students who are interested are urged to apply. Applications can be obtained in Dr. Odell's office in the classroom building.

Students may also obtain mimeographed information about the MUN and its activities. Applications must be turned in by January 20.

## Students to Perform At Recital On Monday

The first student recital of the quarter will be held Monday, Jan. 16, at 8:15 in the college auditorium.

All music majors and minors are required to attend.

"All students are invited to attend," said Wayne Hertz, Chairman of the music department.

### NOTICE

All new veterans must be certain to apply to the Veterans Administration for their certificate of eligibility, Dean Stinson announced this week.

## Holiday Honors Copped by Sue

Sue Lombard hall copped first in both the inter-dorm carol competition and Christmas decoration contest.

Kennedy placed first among the men's dorms in the carol competition. Kamola and Wilson took second places.

Wilson topped the men's dorms in Christmas decorations, gaining \$10 for its treasury. Individual decorated window winners were all from Sue.

First place went to Carol Michellotti, Margarete Hedman, and Donna Wines; second to Shirley Richards, Betty Turneaure, and Kathryn Campbell, and third to Patsy Martin and Mary Pennington.

SGA judges were Connie Nichols, Colleen Moore, Roger Asselstine and Assistant Professor of Art Richard Reinholz.

## REW Committees

(Continued from Page 1)

Summerill; Hospitality, Brian Gerards, Walter Smith, Dorothy Barich, Dick Schutte, Marita Shea; Fireside, Eula Dally, Dr. Roy Reubel.

Personal Conferences, Shirley Summerill, Dr. Maurice McGlasson, Mary Hutchinson, Sylvia Ritchey, Marjorie Wade; Publicity, Roger Salisbury, John Moawad, Kay Short, Jim Gosney, Mary McMorro, Laura Williams, Ann Spence, Ray Western, Phyllis Hicks.

Seminar, Shirley Willoughby, Dr. Jerry Polland, Sonja Zamzow, Cherrie Winnie, Nancy Azbolt, Stan Bayer; and Worship, Bill and Jo Scholen, Barbara Kohler, Pat Short, Mary Zurfluh.

All applicants must have had a residence at school of at least one quarter and attained an acceptable scholastic record before asking for a student loan.

## SGA Council Forms Nucleus Within Student Government

(Ed note: This is the first in a series of articles which will be presented this quarter on student committees and councils. The SGA Council is the voice of student government on campus, and President Wally Johnson is giving an over-all view of the philosophy of our student government. In future articles, purposes and responsibilities will be given of other student groups, for which the SGA Council acts as a clearing house.)

By **WALLY JOHNSON**  
SGA PRESIDENT

"We, the students of Central Washington College of Education, believing that the government and activities of students can be administered in a manner beneficial to all, do ordain and establish this constitution for the Student Government Association of Central Washington College of Education by the administration of this college."

—So states the preamble to our Student Government Association Constitution.

Let us briefly examine ways in which student government functions. How does it do whatever it does?

Student government has a responsibility to help students pre-

pare for citizenship roles as adults. Students must be trained to assume responsibility for their environment. Although the theory of government can be taught in the classroom, an ability and willingness to assume responsibility cannot.

A student government has a responsibility to permit and actively encourage as many students as possible to participate in the student government process. Student government needs administrative committees to execute student government policy.

A student government can help fulfill its educational responsibility and administrative needs by establishing ever-increasing numbers of administrative committees — committees which will not only function in executing policies or programs, but also will participate in decision-making processes.

In addition to involving committee members in the decision-making process, the student government must receive from them a continual "feed-back" of their progress.

## Class Offered In 'How to Study'

To be offered soon will be a "How to Study" class, Dr. E. E. Samuelson announced. The class will be held January 19, 24, and 26 in S 100.

The class is offered to anyone who is interested in improving study techniques.

"It is especially for those who had trouble last quarter," Dr. Samuelson said. Mrs. Mary Wing a graduate assistant will teach the class.

The class will be a non-credit class with sessions lasting approximately one hour, he added. There is no fee.

## 'Lost Weekend' Set As Theme for Fireside

"Lost Weekend" is to be the theme of Wilson Hall's fireside this Saturday night.

The dance will begin immediately after the PLC game.

The affair will be from 9 to 12. Admission charge will be ten cents per person.

YOU'LL BOTH GO FOR THIS CIGARETTE!

Flavor above all—that's

**WINSTON**



■ When it comes to real tobacco flavor, college smokers are going for Winston! This good-tasting, easy-drawing filter cigarette not only brings you finer flavor — but also a finer filter. The exclusive Winston filter works so effectively that the flavor comes right through. Join the big switch to Winston!

Smoke  
**WINSTON**  
the *easy-drawing*  
filter cigarette!



# Time Change Announced For Thursday's Assembly

A time change for next Thursday's assembly was announced this week by J. Wesley Crum, Dean of Instruction. Original time for the Jan. 19 program was 11 a.m. "How To Hate Poetry in One Easy Lesson" is the topic that will be treated by Louis Untermeyer, well known poet, editor, critic and anthologist. Untermeyer has authored many books, among them "A Treasury of Laughter" and "The Book of Living Verse."

Louis Untermeyer was born in New York, reared and, he likes to say, "miseducated" there. In a jewelry manufacturing plant in New Jersey he became successfully an office boy, a salesman, and finally manager.

At thirty-seven, after a few years abroad, he finally left the business to devote his entire time to writing. Proof of the wisdom of this move lies in the ever-increasing number of literary successes he has since turned out, according to his friends.

William Rose Benet called him "The American Heine." Amy Lowell declared that he was "the most versatile genius in America." And Helen Grace Carlisle says that he is "the liveliest personality" she has ever known.

## Dr. Funderburk Gives Program

Dr. Robert Funderburk, Associate Professor of Geography, was featured in the 11 a.m. assembly yesterday.

"Cross Country USA. From Plymouth Rock to Alki Point" was the title of Dr. Funderburk's lecture, which was illustrated with slides from his personal collection.

## Fall Student Teachers To Have Pictures Taken

Today is the final deadline for seniors who were student teaching last quarter to have their pictures taken for the Hyakem.

Pictures are being taken at the Photo Center. For the fee of \$1, two poses are taken in cap and gown and two additional poses in any other type of clothing.

## JOIN THE CROWDS AND ENJOY THE FUN! ITS "COLLEGE CAPERS"

Night at the  
**LIBERTY THEATRE**  
FRIDAY, JAN. 13  
MIDNIGHT SHOW!  
1/2-HOUR STAGE SHOW  
FEATURING

## "The Lordsmen" From C.W.C.E.

Plus This Hilarious  
Rock 'n Roll Screen Hit

**BETTY GRABLE**  
**SHEREE NORTH**  
**ROBERT CUMMINGS**



The Picture That Separates  
the Men From the Boys!

GENERAL ADMISSION ..... .75  
LOGES ..... 1.00  
DOORS OPEN 11:30, SHOW 12:00



Louis Untermeyer

## Meeting Features New Art Slides

Members of the Home Ec Club were entertained with the art department's new slides shown by Sharon Orr, at their monthly meeting held Monday night in C324.

Cookies and tea were served by Audrey Anderson and Mary Pennington.

Vice president Imogene Pownell will conduct the meetings this quarter in the absence of president Kathy Cadieu. Sharon Orr will be acting vice president.

## SGA Agenda

**Tonight**  
7 p.m.—SGA dime movie, "Air Cadet," auditorium.  
9-12—North all-college formal, "Winter Wonderland," CUB main lounge.

**Tomorrow**  
8 p.m.—PLC vs. Central, Morgan gym.  
9:30 p.m.—All-College fireside, Wilson hall.

**Monday**  
8:15 p.m.—Student recital, auditorium.

## Twenty Get BA Degrees

Twenty Central students received degrees at the end of fall quarter, with several students going immediately into teaching positions.

Receiving a B.A. in Education were Anthony Connot, Maynard Worst, Matthew Balint, Marilyn Setlow, Robert Dunn, William Pier, Shirley Hayes, Jean Bushnell, Robert Davidson, Dolly May Howard, James Patrick Ward and Beverly Carol Ryan.

Graduating with a B.A. in Arts and Science were Lyle Finley, Terold Platt, Ray Smith, Ralph Harris, Dennis Peterson, William Marshall, Floyd Gabriel, and Jim Ellis.

William Kensel was a candidate for the Master of Arts degree.

Central has two political clubs—the Young Republicans and the Young Democrats.

## Variety of Events to Benefit WUS During Week Drive

With one thousand dollars set as a goal, committees are busily preparing for World University Service Week, January 23-27. A "kick-off" assembly will be held on Monday, January 23 at 12:30 in front of the CUB.

Tuesday has been designated as Club Day at which time various clubs will seek to raise funds in a variety of ways.

A mixer will be held on Wednesday evening at the Walnut Grove.

Thursday night will give students and faculty members an opportunity to perform at a Student-Faculty Stunt Night beginning at 8 p.m. in the auditorium. Thursday will also be designated as Faculty Day in the CUB.

One special feature will be a contest between the men to name the "Roughest Professor" and the contest between the women to choose the most "Huggable Instructor." Music will be provided for the evening meal by members of the faculty.

The Sweetcians have donated their services for the Friday night "Bohemian Hop," to be held in the men's gymnasium from 9-12 p.m. This dance will be semi-formal.

Saturday an all day Ski Carnival will be held at Swauk.

Topping off the week's activities will be a dinner served in the women's dormitories on Sunday evening. At this time, the women students on campus will prepare a meal for the men.

Central's music scholarships which provide for free music lessons may be renewed.

## CWS Members Discuss Plans

Chairman Eunice Steele extended a welcome to members and visitors when Central's Women Students met last Wednesday evening at the home of the adviser, Mabel Anderson.

Topics for discussion were the compilation of data for a club year book, and club participation in campus activities such as the World University Service and Religious Emphasis Week.

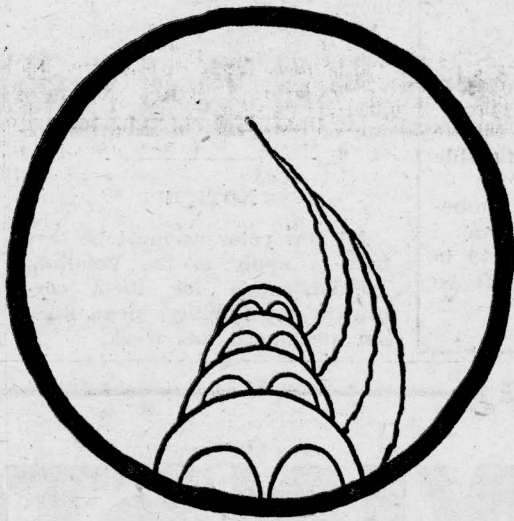
## Group Votes to Retain Seating Arrangement

At a meeting of the dining hall committee Monday evening, students voted to continue the seating arrangements provided by the seating charts in each dining hall.

Members of the committee felt that dining at mixed tables during the evening meal encouraged "co-educational" friendships on the campus.

The committee encourages students to take any problems concerning the dining hall to their respective dining hall representatives.

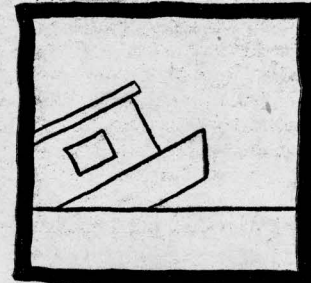
# LUCKY DROODLES! REAL COOL!



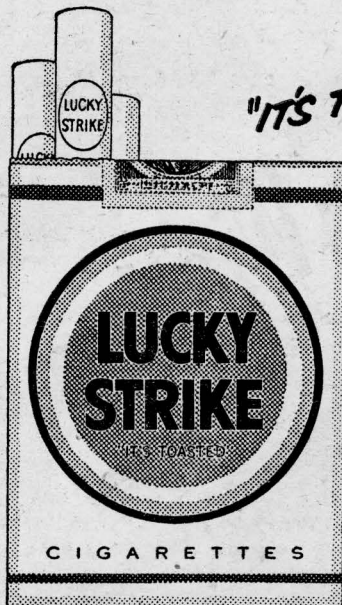
←  
**WHAT'S THIS?**  
For solution, see paragraph below.

**CAUTION—SLIPPERY DROODLE ABOVE.** But if you like your fun on the run, it should be easy. The title: Bobsled team enjoying better-tasting Luckies. Luckies taste better, you know, because they're made of fine tobacco that's **TOASTED** to taste better. So light up a Lucky. You can bank on this: You'll say Luckies are the best-tasting cigarette you ever smoked!

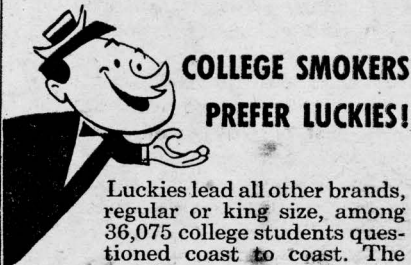
DROODLES, Copyright 1953 by Roger Price



**HOUSEBOAT WITH SUNKEN LIVING ROOM**  
Blue Beathard  
Sam Houston State

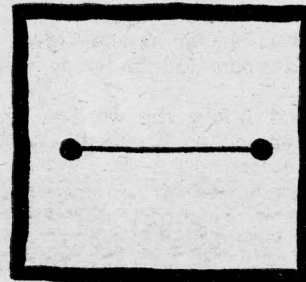


"IT'S TOASTED" to taste better!

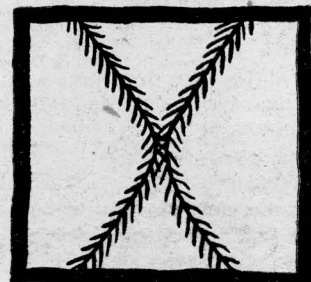


**COLLEGE SMOKERS PREFER LUCKIES!**

Luckies lead all other brands, regular or king size, among 36,075 college students questioned coast to coast. The number-one reason: Luckies taste better.



**BARBELL FOR 97-LB. WEAKLING**  
Nelson Barden  
U. of New Hampshire



**KNOCK-KNEED FLY**  
Sanford Zinn  
Indiana U.

# LUCKIES TASTE BETTER - Cleaner, Fresher, Smoother!

©A.T. Co. PRODUCT OF The American Tobacco Company AMERICA'S LEADING MANUFACTURER OF CIGARETTES



# World Review

By THE ASSOCIATED PRESS

## School Head To File Suit

RICHLAND, Wash. (P) — Mrs. Pearl A. Wanamaker says she is going ahead with plans to sue Fulton Lewis Jr. for libel although the radio commentator has publicly apologized for a broadcast in which he made references to her in discussing a former school teacher who invoked the Fifth Amendment before a congressional committee.

Here for a series of meetings, Mrs. Wanamaker, State superintendent of public instruction, said Monday night that because of other commitments she had not heard the retraction broadcast by Lewis Monday but added:

"I haven't changed my mind in the least about going ahead with the suit I plan to file against him for libel."

Mrs. Wanamaker said at Seattle earlier the suit would be based on remarks made by Lewis over the Mutual Broadcasting System last Friday.

In the broadcast, Lewis discussed the case of Margaret Jean Schuddakopf, a former Tacoma school counselor who was suspended from her job after she invoked the Fifth Amendment before the House Un-American Activities Committee, Mrs. Wanamaker recently revoked the suspension.

Lewis in the broadcast said a brother of Mrs. Wanamaker had "taken asylum" behind the Iron Curtain and then criticized the United States. The man is a brother of Mrs. Schuddakopf. Mrs. Wanamaker has a brother in California.

In his broadcast apology Monday, Lewis said the error, which he called a "colossal mistake" resulted from the fact he was up against a deadline in preparing the original script and did not check it thoroughly before going on the air.

He offered to give Mrs. Wanamaker equal broadcast time on his program for "any further points of correction."

## Whitman Hosts Ski Hotshots At Tourney

WALLA WALLA (P) — Whitman College will be host this weekend to eight Northwest schools at its annual intercollegiate ski meet.

Bob Johnson, Whitman ski coach, said schools entering the Jan. 14-15 event were Washington, Idaho, W.S.C., University of Alaska, British Columbia, College of Puget Sound, Portland State, Wenatchee Junior College and Whitman.

Downhill and cross-country events will be run Saturday, with slalom and jumping Sunday, all at the Spout Springs, Ore., ski site. Competition will be in A and B divisions, with the scoring based on the performance of the leading trio on each team.

## President Asks For Peace Ship

WASHINGTON (P) — President Eisenhower feels "we've lost valuable time" in getting started on development of any atomic-powered "peace ship."

The President's views were set forth in a letter made public Tuesday by Rep. Tollefson (R-Wash).

The President last year recommended building an atomic exhibit ship which he said could tour the world's ports to dramatize his "atoms for peace" plan. But the House passed instead a bill for a nuclear-powered cargo-passenger vessel.

Tollefson, senior Republican member of the House Merchant Marine Committee, wrote the President, suggesting Eisenhower give his support to the merchant ship measure, now before the Senate-House Atomic Energy Committee.

Last Thursday in his State of the Union message Eisenhower again urged Congress to approve an exhibit ship.

In his letter to Tollefson, the President said:

"Questions of our own and other patrons' timing, the specific purpose of the vessel, and the availability of nuclear scientists, technicians and equipment entered into my conclusions that the so-called 'peace ship' plan is a desirable course to follow at this time . . . we lost valuable time and ought to get this ship under way as promptly as we can."

Eisenhower did not say specifically whether he would accept the merchant ship as substantially carrying out his plan.

"I don't think the President is holding out for any particular bill," Tollefson said.

## Official Scolds Penny Tossers

LOS ANGELES (P) — Episodes such as the penny-throwing that brought a forfeit in last Saturday's California-Southern California basketball game at Berkeley demand drastic administration action, says Coach Forrest Twogood of USC.

Unless such administration action is taken in controlling fans, a serious and perhaps "calamitous" incident awaits basketball, he said.

"I think it is an administration problem and a serious one," Twogood told the weekly meeting of basketball writers Monday.

Referee Al Lighter forfeited Saturday's game to Southern California which led, 77-64, with 3 minutes 15 seconds to play. Earlier he had been struck in the eye with a penny and spectators were warned against repetition of the coin throwing. When the tossing continued, Lighter called the game. He said such actions threatened players with injury.

## Maybe He Just Always Wanted To Be a Fireman

BOSTON (P) — While firefighters were busy battling a nightclub blaze in the theatrical district here the other day, someone stole one of their bigger fire trucks.

The thief abandoned the ladder truck a few minutes later when it crushed against a fence at the Boston Common.

The man learned he couldn't make a full swing around the corner without a filler man to steer the engine's rear end.

## Some Like It, Some Say No

By FRANK W. VAILLE

WASHINGTON (P) — With one eye apparently on this fall's elections, Pacific Northwest members of Congress split generally according to party in reaction to President Eisenhower's State-of-the-Union message.

It sounded good to Republicans; Democrats were dubious.

Sen. Morse (D-Ore) typified Democratic reaction. He said the message "expresses great 'faith' but is regrettably deficient in works."

Morse said the message "promises much," but added:

"This administration has yet to demonstrate that it will do anything but continue its programs of big business-banking favoritism, while the general public interest receives lip service."

A contrasting view came from Rep. Coon (R-Ore) whose bill to permit local utilities to join with the government in building John Day Dam on the Columbia River was the lone piece of Northwest legislation singled out for specific presidential endorsement.

Sen. Neuberger (D-Ore), who debated merits of the John Day bill with Coon throughout Oregon this fall, charged the administration with "abandoning" the Columbia River project to the private utilities. Endorsement of the more costly upper Colorado project, he said, constitutes "discrimination" against the Pacific Northwest.

Neuberger added, however, that "it is good to know that the White House has yielded slightly on federal aid to schools."

## Bing Crosby Gives Money For Library

SPOKANE (P) — Crooner Bing Crosby has added \$100,000 to the trust fund for a "Crosby Memorial Library" at Gonzaga University, his alma mater, the school announced.

His gift brings the fund total to about \$241,900 and was Crosby's second contribution this week. He gave 100 shares of Minute Maid Orange Juice Co. stock valued at \$1,900 also.

No date has been set for the start of construction on the library. There have been plans to include a "Crosbyana Room" in the building for many of Bing's mementos.

It Happened Off Campus . . .

# Weather, War Top World News

By the Associated Press

Cold weather and luke-warm war topped the news that came into the CRIER office this week over The Associated Press wires. Of the two topics the weather got the top spot news. It was bad all over.

While Central Washington College's campus stayed in the deep-freeze, some parts of the nation worried about dust. From Oklahoma City came word that most of Oklahoma is virtually a layer of powder-dry dust that will start blowing almost any day unless rains come quickly.

Denver reported that much of Eastern Colorado, gripped by drought, is a "powder keg" ready to blow into dust storms if high winds should rip the section.

In Texas, farmers and ranchers reported they were faced with the worst drought and wind erosion threat of recent years.

### Cold Bill High

The coldest weather of the winter season continued in Florida and other parts of the Southeast. Damage to crops in Florida alone was estimated in the millions of dollars.

Abroad, the weather was worse. Rescue teams battled through heavy snowdrifts with food and blankets for marooned villagers on the flatlands of the English east coast, London reported. The big snow blanket covered the entire east coast of Britain and extended over Western Europe as far as Italy.

Tokyo reports that a bitter cold wave swept out of Siberia, bringing freezing weather to vast areas of East Asia and snow as far south as Kyushu, Japan. Frigid air whistled from Russia across Mongolia, Inner China, Manchuria and Korea to Japan.

And news from Portland is that the flood threat already is forming in the mountains rimming the Columbia Basin. The forecast of the weather bureau cited precipitation that was 150-250 per cent of normal in much of the area in November and more than 200 per cent of normal in December. All will be well, the Weather Bureau said, if precipitation behaves and runoff is normal, though.

### Middle East Troubled

The war, which can be described as "luke-warm" from this distance but is anything but to the soldiers firing and dodging lead, bubbled but didn't boil in the Middle East. Britain ordered more troops to the Middle East "as a precautionary measure" for the protection of British subjects in the whole disturbed region.

The British War Office announced in London that airborne and ground troops are being flown to the island colony of Cyprus in the eastern Mediterranean as a "fire brigade" in the event fighting spreads. Cyprus already is torn by a rebellion against British rule. Britain's action came after a wave of anti-Western rioting swept the Arab state of Jordan in December and last weekend.

From Asuncion, Paraguay comes

news that sources close to the Paraguayan government denied reports Tuesday that President Alfredo Stroessner is under house arrest or military surveillance. Over in Chile, too, things seemed somewhat quieted down.

### Algeria Hot Spot

Algiers sends word that rebel forces made a nine-hour attack on Algeria's largest explosives factory at Belle-Fontaine, 25 miles from Algiers. Defending troops and police beat them off.

The West Coast was visited by minor earthquakes. The largest earthquake in nearly a year was recorded Tuesday on the seismograph at Caltech, word has it from Pasadena, Calif. Two earthquakes, a major tremor in the Southwest Pacific and a smaller one about 400 miles from Seattle, possibly off the Oregon Coast, were recorded early Tuesday on the University of Washington seismograph.

There was news from up north. Moscow Radio reported the Russian exploration team on Antarctica has started exploratory flights over the frozen continent. The Russian team of explorers and scientists landed at Depo Bay and ski teams were sent out to search for a camp site. The American expedition to the Antarctic is already settled at a base camp at McMurdo Sound. A British team aboard the motor ship, Thereon, is battling through the Wedell Sea toward the ice cap.

President Eisenhower's proposal to sell American farm surpluses behind the Iron Curtain drew a blank with the Russians but was praised by the British press.

### Experts Say He's Sane

John Gilbert Graham, accused of murder in the time bombing of a commercial airliner, is sane, two psychiatrists advised the district court in Denver. The report said Graham, 23, had "full possession of his mental faculties" Nov. 1, the date of the United Air Lines crash 32 miles north of Denver, in which 44 persons died.

Alaska delegates to the national Democratic convention lean toward Adlai Stevenson as the party's presidential candidate, a poll in Fairbanks showed.

Sen. Jackson of Washington State is the Democrats' "best prospect" for the party's vice presidential nomination, Sen. Mansfield, D-Mont. said in Washington, D. C.

# Pro Whisky Taster Downs a Lot of the Stuff, Swallows Nary a Drop

By HAL BOYLE

NEW YORK (P) — Marjorie Plamp, a young choir singer whose whisky intake for the last seven years totals 700 gallons, is no secret drinker—but she has a drinking secret.

Every day, five days a week, year in and year out, she takes aboard an average of 25 two-ounce snifters of bourbon—or about two full bottles.

Even the steadiest patron of the cup that cheers might wonder how a 5-foot-2-inch young lady weighing only 115 pounds could put down all that stuff and remain clear-eyed and steady—even if she came from Kentucky (which she does) and had two hollow legs (which she definitely doesn't).

The answer lies in Miss Plamp's drinking secret. She doesn't down

the stuff. She merely swishes it around in her mouth for a few seconds, then spits it out.

"Yes, all of it," said Marjorie firmly. "Every drop."

She is, so far as she knows, the world's only full-time lady whisky taster.

"And I love the work — every moment of it," she said. "I'd be lost without it."

For the benefit of those interested in seeking steady (and you do have to remain steady) employment in this interesting field, Miss Plamp offers little advice. Chance played a considerable role in her own career.

After graduating with a degree in chemistry from a Catholic girl's college in Louisville, she got a job nine years ago as a laboratory technician with the Brown-Forman distillery.

"Two years later they made me taster," she said. "I have to taste about 20 to 30 samples a day of whiskies in all conditions of aging—testing them for proof content, flavor, body, aroma and color."

"The taste test is indispensable. A whisky might pass a chemical test perfectly well but still taste mighty phooey."

Miss Plamp says she never takes a drink on the job and adds that, as a matter of fact, a distillery is one of the hardest places in the world for a fellow to cure a thirst.

"After every three samples, I have to rest my taste buds for five minutes," she said. "I confine my drinking to purely social occasions, and I have a two-drink limit. That's my capacity."

Besides requiring monumental self-control, a professional whisky

taster is under other limitations. He can't, for example, take samples home to his friends.

"There are 14 government men around to check on things," she remarked.

"I had to take a great deal of kidding when I first got this job, but now my acquaintances are used to it. No, my family doesn't mind. After all, I am a chemist. My father gets a bang out of it."

Over the years Marjorie has become a real expert on bourbon. She denied that the fusel oil in bourbon caused the hangover one gets if he imbibes too freely.

"You'd have to drink a gallon and a half of whisky at one sitting to get a hangover from the fusel oil content alone," she said, smiling. "Do you know of anyone who does that?"

Miss Plamp sings alto in her church choir, her hobby is going on camping trips, and her current beau is a Princeton University English professor.

Has her unusual occupation had any unusual effect on her?

"Well, if I have a cold I have to let the samples pile up until I shake it and get my sense of smell back," she said.

"There's one other thing. I used to have a great deal of trouble with my teeth. But since I became a taster seven years ago I haven't developed a single new cavity."

She emphasized, however, she wasn't recommending whisky-rinsing the teeth 25 times a day as a substitute for a visit to the dentist. It merely has worked out that way with her.



# THE CATS MEOW

By ROLLIE DEWING

How about those two games with Whitworth last Thursday and Friday? Blood pressures went up and screams rent the air both nights as the Wildcats tried to sink the gallant Pirates. Thursday night's loss was a heartbreaker for Central, the Cats blew a six point lead in the final three minutes and then were edged in the overtime period by the gritty Pirates 81-79.



For a while it looked like the Cats were going to do a replay of Thursday night heart-breaker in the Friday night scramble. Again the Centralites blew a sizeable lead in the fourth quarter and were forced into an overtime period again. The Cats met the onslaught with determination and coolness this time and won going away 82-78.

You couldn't ask for any more tenseness or excitement than these two games offered but it was disappointing that Central didn't cop both games. Central was the best team both nights but "choked up" when the blue chips were down in the Thursday contest.

### Adams Stars

Whitworth's Marv Adams, the outstanding player in the two game series, is one of the most talked about players to appear on the Ellensburg floor in many a moon. Adams stands a solid six feet and four inches, he moves well for a big man and dribbles and breaks like a guard. But oh that jump shot from outside! A big man like Adams who can move and handle the ball well is practically impossible to stop when he puts that shot up from anywhere within 30 feet of the basket. And Marvellous Marv seldom misses his pet shot once he gets it headed for the basket.

After Adams poured 28 points through the basket Thursday night, Central coach Leo Nicholson put Tom Oxwang on him Friday and the former Goldendale star did a great job.

Little Don Myers played great basketball for Central both nights. Don's value to the team can't be measured in points alone. The stocky southpaw keeps the ball club together with his cool and heady floor play.

### Conference Is Tough This Year

This year's Evergreen Conference race promises to be one of the tightest in history with seven evenly matched teams fighting it out for the title. PLC and Whitworth were the pre-season choices to vie for the crown but several teams have indicated that changes may be in order before the season ends.

Eastern looms as the dark-horse of the conference after handling Whitworth quite easily in the two rival's first meeting. Talented freshmen and transfers have made the Savages into a much improved club.

Central also has an excellent chance of upsetting the predictions. The Cats are an improved ball club with considerable more height and reserve strength than last year's quintet that finished in third place behind PLC and Whitworth respectively.

CPS, Western and UBC are all improved ball clubs but at present seem destined to finish in the second division in that order.

### PLC Is Favored

Getting back to who will take the title, this reporter sees PLC as the conference champion followed by Central, Eastern and Whitworth in that order. Central beat PLC in the season opener in Tacoma but the Gladiators are notoriously slow starters and appear to have the more consistent team.

We see that the Pacific Coast Conference has voted a raise in athletes pay. The wage now goes up to \$2 an hour, from \$1.50 and the monthly maximum is upped to \$100. Many Coast Conference athletes are drawing these wages for token jobs and are provided with a nifty scholarship besides.

It would be senseless to compare Central's athletic program with these much larger schools but let's bear in mind that many of the Coast Conference schools are state supported too.

Let's start the new year right by getting at least some scholarships and some better jobs for our athletes, especially the football team.

## Basketballers Highlight Vacation With Trip to Fairbanks, Alaska

While the Crier was taking its usual Christmas layoff, Central Washington's Wildcats were playing lots of basketball with two games against Western and a 5-game trip to Fairbanks, Alaska.

Central started the conference off with a win against Western on Dec. 9 by a 64-52 score, but were routed by the rebounding Vikings the next night in a 75-53 non-conference tilt. The Cats led at halftime in the first contest, 27-20, and with the aid of a 68 percent

average at the foul line, went on to the victory. Guard Don Myers with 18 points and forward Jack Brantner with 15 led the Wildcats

### Evergreen Conference

Pacific Lutheran	5	0	1.000
CENTRAL			
WASHINGTON	2	1	.667
British Columbia	2	1	.667
Whitworth	2	2	.500
Eastern Washington	1	1	.500
Puget Sound	1	4	.200
Western Washington	0	4	.000
Monday's Results			
Pacific Lutheran 58, British Columbia 51			
Puget Sound 69, Western Washington 57			

## PLC Leads Conference

By THE ASSOCIATED PRESS

The Pacific Lutheran Gladiators whacked British Columbia, 58-51, Monday night for their fifth straight Evergreen Conference basketball victory and took over undisputed possession of first place in the standings.

College of Puget Sound clipped Western Washington, 69-57, in the league's only other game to leave the Vikings alone in the basement. It was the Loggers' first win in five starts.

The British Columbia Thunderbirds, who took two straight from Puget Sound last weekend, couldn't find the range against the Gladiators. PLC led 26-22 at halftime. The Birds' best threat came in the second half when they closed the gap to 40-39 but field goals by Chuck Curtis and Phil Nordquist put the Lutes ahead to stay.

Puget Sound applied the pressure in the second half to beat the Vikings. Trailing 22-29 at the intermission, the Loggers poured in 47 points in the closing period. CPS' Ed Bowman was high scorer with 16 points.

to the victory.

Western caught the Central five off balance Saturday night, however, as they romped to a 41-28 halftime lead and held to a big margin the rest of the way. Four Vikings hit in double figures for Western, but Jack Brantner led all scoring for the evening as he picked up 16 points for Central.

### Off To Alaska

After a week's rest and final exams, the Wildcat squad boarded the airplanes on Friday, Dec. 16, and flew to Fairbanks, Alaska, to encounter minus 38 degree temperatures, dog sleds, moose steaks—and basketball.

Saturday night the Cats tangled with the University of Alaska in the first all-college game ever played in the frigid north, and easily walked off with a 98-66 victory as all 12 squad members saw action. A Monday night encounter with the Alaska five again proved to be much the same story, as the CWCE quintet rolled up an 87-56 win.

### Rally Beats Central

With Coordes out, Central bowed to defeat at the hands of Eielson Air Force Base on Tuesday night, 85-77. The Cats blew a big 49-29 halftime lead when Don Lyall fouled out in the second half and the team fell apart without the services of the tough center. Brantner and Tom Oxwang led scoring for the Cats with 21 and 18, respectively.

Closing out the Alaskan trip was a high scoring contest against the Portland AAU team at Fairbanks. The Cats rolled up 101 points to whop the AAU outfit, 101-53.

## Wildcats Tangle With PLC In Two Crucial Contests

Renewing a rivalry that started at the pre-season practice tourney at Tacoma, the Wildcats square off with the Pacific Lutheran Gladiators tomorrow night at Morgan Gym.

Central hopes to maintain the superiority showed over the Lutes in the Lumber City tilt while the Lutes hope to revenge a 70-53 loss to the Cats in the season's opener in Tacoma. The two teams will meet again on Monday night on the Morgan floor.

These games are crucial for both clubs. PLC is currently riding atop the Evergreen Conference standings with a five win no loss record and needs at least a split

in the series to stay securely on top. A double win for either team would be a severe blow to either's championship plans.

A veteran and a newcomer have been supplying the go power for the powerful Lutes in games so far. Veteran all-conference forward Phil Nordquist and tall Chuck Curtis, freshman all-stater from Richland, are the two boys that the Wildcats will have to hold down.

Central will open with Jack Brantner and Tom Oxwang at the forward slots, Bill Coordes at center, and Don Myers and Stu Hanson at guard.

### Wildcat Scoring

Player	g	fg	ft	pf	tp	ave.
Aho	7	0	1	6	1	.143
Bieloh	3	5	1	6	11	3.666
Bishop	2	0	2	0	2	1.000
Brantner	11	56	72	26	184	16.727
Coordes	9	35	37	21	107	11.888
Deeg	8	13	5	7	31	3.875
Hanson	11	25	13	34	63	5.727
Hauff	4	1	3	11	5	1.250
Kenoyer	9	11	4	15	26	2.889
Lyall	11	49	24	34	122	11.091
McCallum	4	0	2	3	2	.500
Myers	11	39	51	32	129	11.727
Oxwang	6	34	20	14	88	14.667
Pratt	5	4	4	6	12	2.400
Wood	11	20	25	26	65	5.909
Team	112	292	264	241	848	7.571

### SCORES

	CWCE	OPPON.
PLC	70	53
CPS	65	67
Whitman	96	74
Western	54	52
Western	53	75
U of Alaska	98	66
U of Alaska	87	56
Eielson	77	85
Ladd	77	76
Whitworth	79	81
Whitworth	82	78
	848	760

### Girls Get Gym On Saturday

Each Saturday during winter quarter the gymnasium is open to all women students from 10 a.m. until noon. A variety of activities can be provided in order to satisfy the recreational desires of all. All women students are invited to use

the physical education facilities at this time when the weather has greatly limited outside recreational activities.

The Associated Women Students Scholarship Plaque is awarded each year to the womens' residence group which has the highest general scholarship average.



Home of Fine Foods

## WEBSTER'S CAFE

### COME TRY OUR

Delicious  
Jumbo  
Hamburgers!



## WEBSTER'S BAR-B-Q

Across from the Auditorium

## Sweecy Special

Any Hamburger for 35c

at the

## LAZY-T DRIVE-IN

Between 10 P.M. and 1 A.M.

Friday and Saturday Only

Yakima Highway

South Side of Town

## SERVICE CLEANERS

One Day Dry Cleaning

In at 9 - Out at 5

5th and Pine

Across the Street From the Liberty Theatre

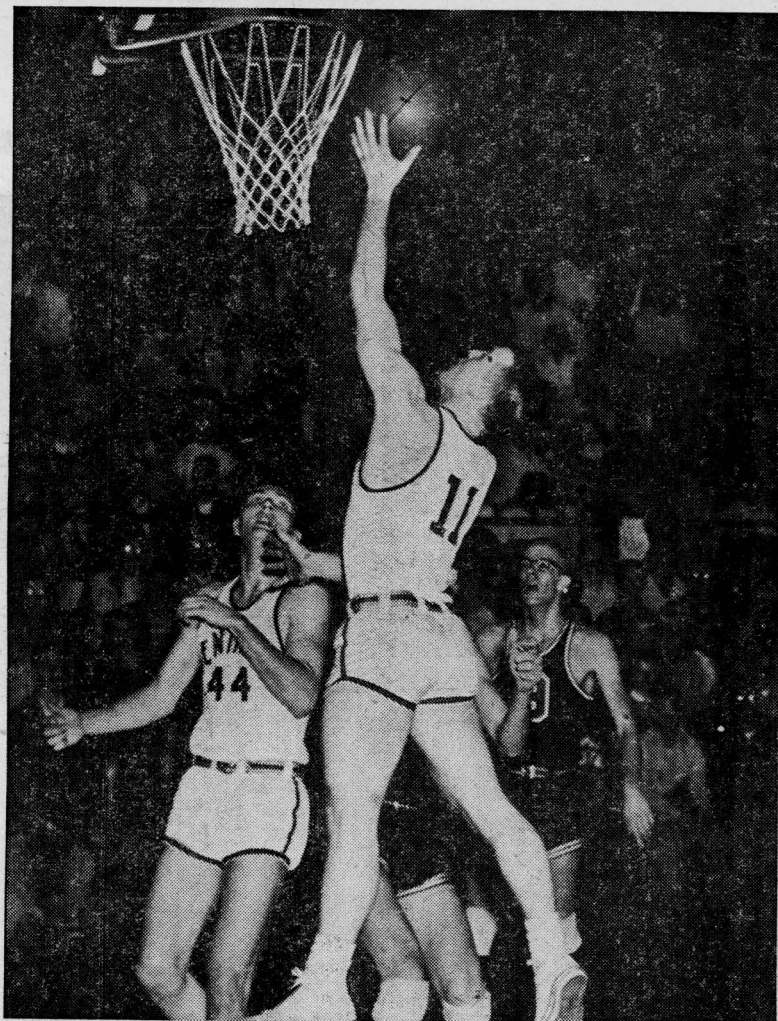
Radio Repair Phonographs  
Headquarters for Latest in  
Phonograph Records

## DEAN'S

Join Dean's Record Club and  
get a FREE RECORD with  
every nine you buy.

3rd and Pearl Ph. 2-1645





**DON MYERS** puts up a left-handed lay-up to help the Central cause against the tough Whitworth Pirates. Screening for Myers is Bill Coordes, No. 44. Myers scored a total of 37 points in the two game series with Whitworth at Ellensburg.

## Cats Split Overtime Tilts With Determined Pirates

Playing almost identical games in both contests, Central garnered a split with the spirited Whitworth Pirates in a two game series last Thursday and Friday at Morgan Gym.

The big difference in the two donnybrooks was that the Cats managed to stave off a Whitworth rally in the Friday contest and go on to win in overtime 82-78. The Cats dropped the Thursday night thriller in the overtime period 81-79.

Central blew sizable fourth quarter leads in both contests to the determined Pirates and were forced into overtime both games.

### Central Leads

Central jumped off to an early lead in the first game despite a shaky shooting percentage. Guard Don Myers and Center Don Lyall led the Central attack.

Marv Adams, Whitworth's all-conference center hit two quick jump shots to put the Pirates ahead at intermission by a 38-37 count.

Led by Myers the Cats built up a 69-60 lead in the last half with about 10 minutes left.

### Adams Sparks Pirates

Then Adams, who was high point man for the night with 28, sparked a brilliant Whitworth rally that carried the Pirates to a 74 all tie at the end of regulation play. Whitworth then went on to wrap

the game up in the overtime period by outscoring Central seven to five.

Myers was Central's high point man with 24 points.

Needing a win to stay in contention in the Evergreen Conference race, the Wildcats managed to stave off the gritty Pirates and win 82-78 in the overtime period. Friday night Central enjoyed an 11 point halftime lead of 43 to 32 but again could not stand the prosperity in the second half as the Pirates overtook and passed them in the dying moments.

Jack Brantner and Don Myers managed to put together a field goal and a free throw to tie the score at 72 all at the end of regulation play. Then Brantner and Stu Hanson got together four points apiece in the overtime period to

Girls' intramural basketball will start on Monday, January 16, with turnouts to be held on Monday and Thursday nights from 6:30-8:00 p.m., Mary Rodgers, publicity director of WRA, announced this week.

The first week of action will be practice games and a tournament will be held between the women's dormitories during the following weeks with a trophy to be awarded to the winning group. All games will be held in the men's gym.

"All girls who turn out for one quarter will be eligible for WRA membership and we would like to see a large turnout," Miss Rodgers added.

cinch the game for Central.

Brantner led the Central scoring with 23 points for the evening but had to yield scoring honors to Adams who collected 25 points for the Pirates. Big Marv had a total of 53 points for the two game series.

# SEV'S

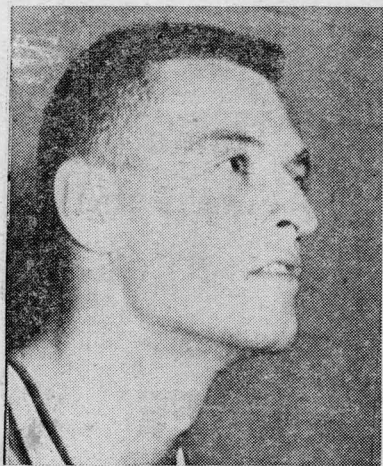
## Best 'Burgers in Town

● Fountain ● Sea Foods ● Dinners

WEST 8th

## Valuable Don In Final Year

Heading this week's Sportrait is Central's big double threat athlete, Don Lyall. Lyall is now earning his fourth basketball letter in the crimson and black uniform and just concluded his fourth year as a lineman on the CWCE football team.



**DON LYALL**

Don started his athletic career at Columbia high school in Richland where he lettered three years in each of the two sports, captained the football squad as a senior, and won the outstanding basketball award. The husky lad was awarded all-conference honors in both sports as a senior.

The tough 200-pound tackle proved plenty valuable to Central's Wildcats in his four years of action, and he was given all-conference honorable mention as both a junior and senior.

His basketball career has been equally successful. He made all-conference honorable mention as a freshman and has gone on to prove himself one of the mainstays of the Central hoopers. With an accurate push shot and good jump shot, the 6' 3" lad is one of the Wildcats' top scorers this year.

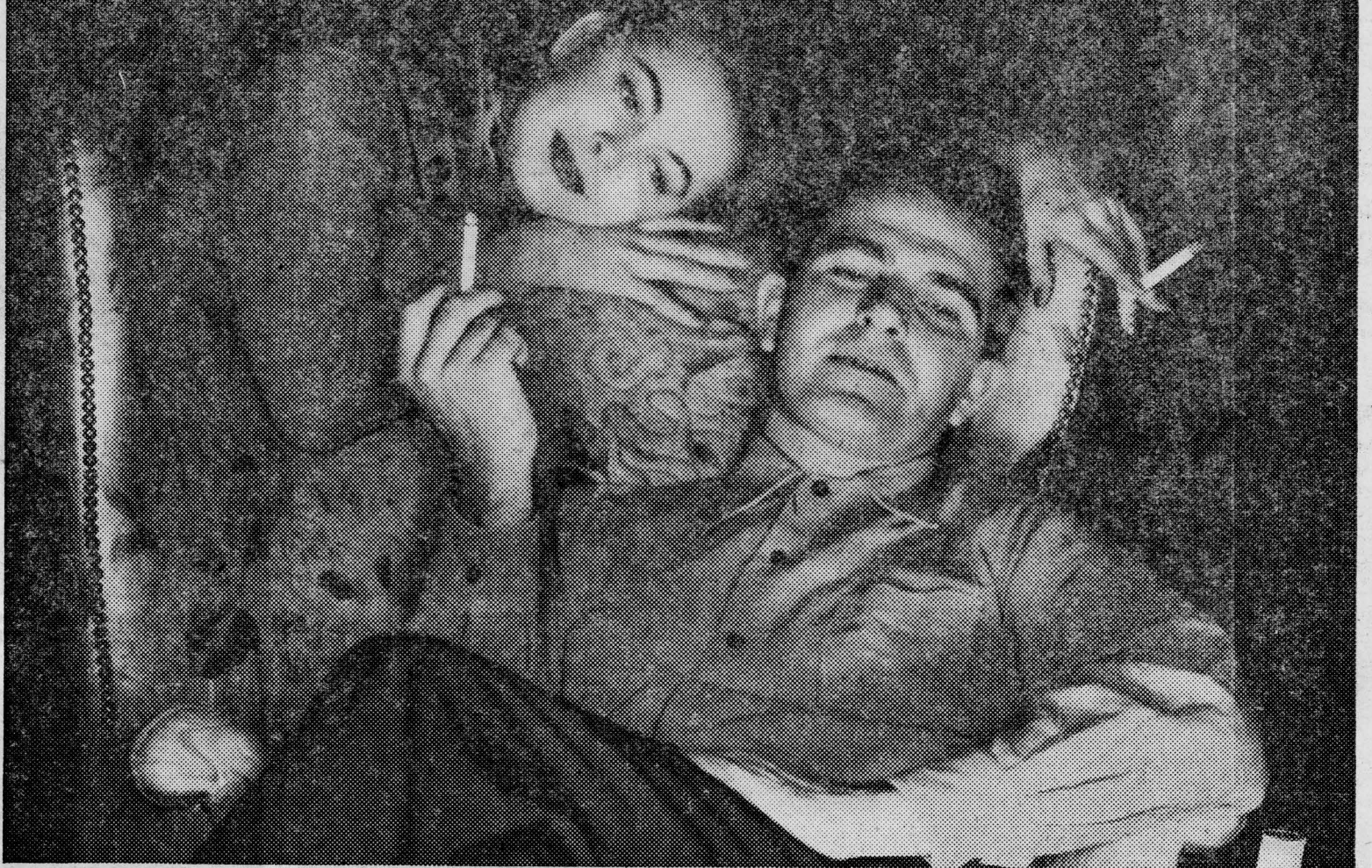
Lyall's scores in the classroom are coming along well, too. He is one of the few athletically inclined persons that still find time to keep their grades up. Don's 3.00 plus is one of the highest grade points to be found among Central's athletes.

"We have as fine a team as any since I've been here," Lyall said when asked about this year's squad. "I couldn't hope to play on a better outfit."

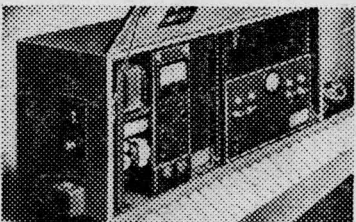
The 21-year old senior plans on becoming a high school coach after a period in the air force. With an "A" in student teaching last quarter, his chances for success look good.

# PACKS MORE PLEASURE

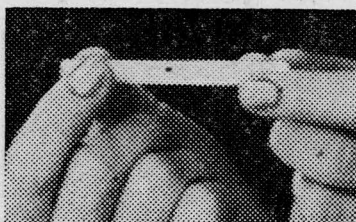
*because it's More Perfectly Packed!*



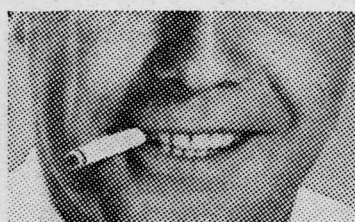
*Satisfy Yourself* with a Milder, Better-Tasting smoke—packed for more pleasure by exclusive Accu-Ray



The more perfectly packed your cigarette, the more *pleasure* it gives... and Accu-Ray packs Chesterfield far more perfectly.



To the touch... to the taste, an Accu-Ray Chesterfield satisfies the most... burns more evenly, smokes much smoother.



Firm and pleasing to the lips... mild yet deeply satisfying to the taste—Chesterfield alone is pleasure-packed by Accu-Ray.



# CHESTERFIELD

*MILD, YET THEY Satisfy!*

© LIGGETT & MYERS TOBACCO CO.

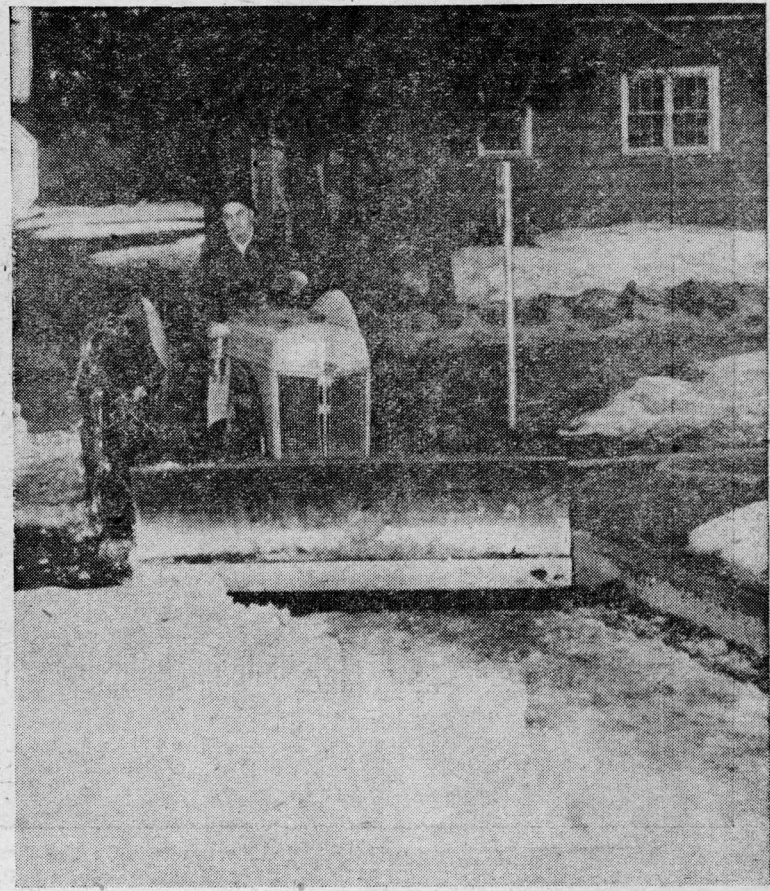


# FOCUS ON CENTRAL...

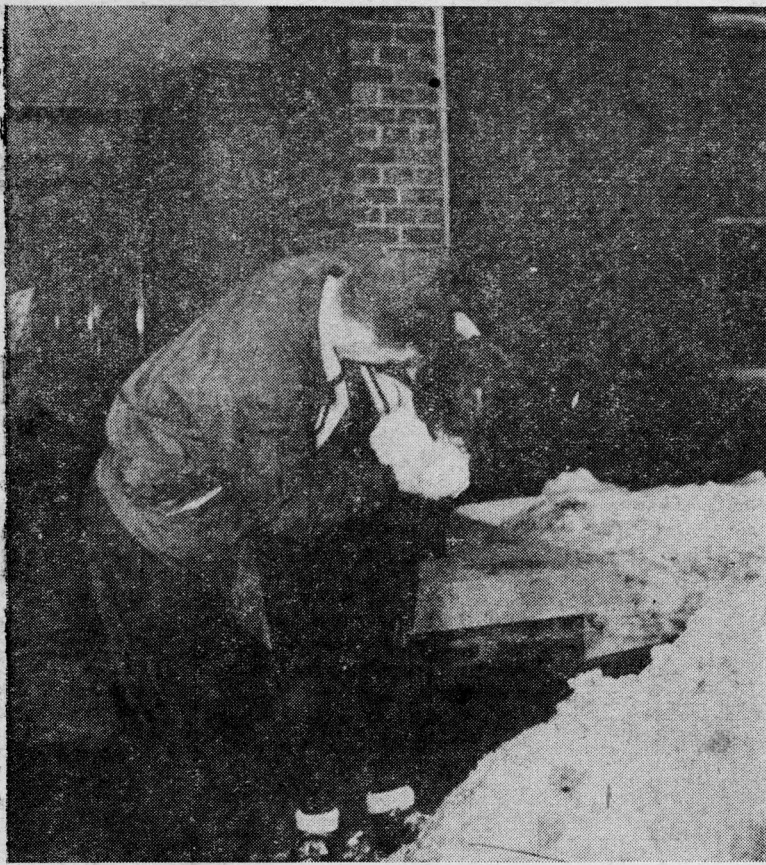
## Background for Winter Activities Provided by Snow-Covered Campus



**STUDENTS DUCK SNOWBALL** thrown in front of the CUB by Sinky Hammond. Destination: Joanne Sullivan, at the extreme right. Pranksters had field days when the snow "was just right to pack" and as a result the whole campus was in peril of the personally guided missiles.



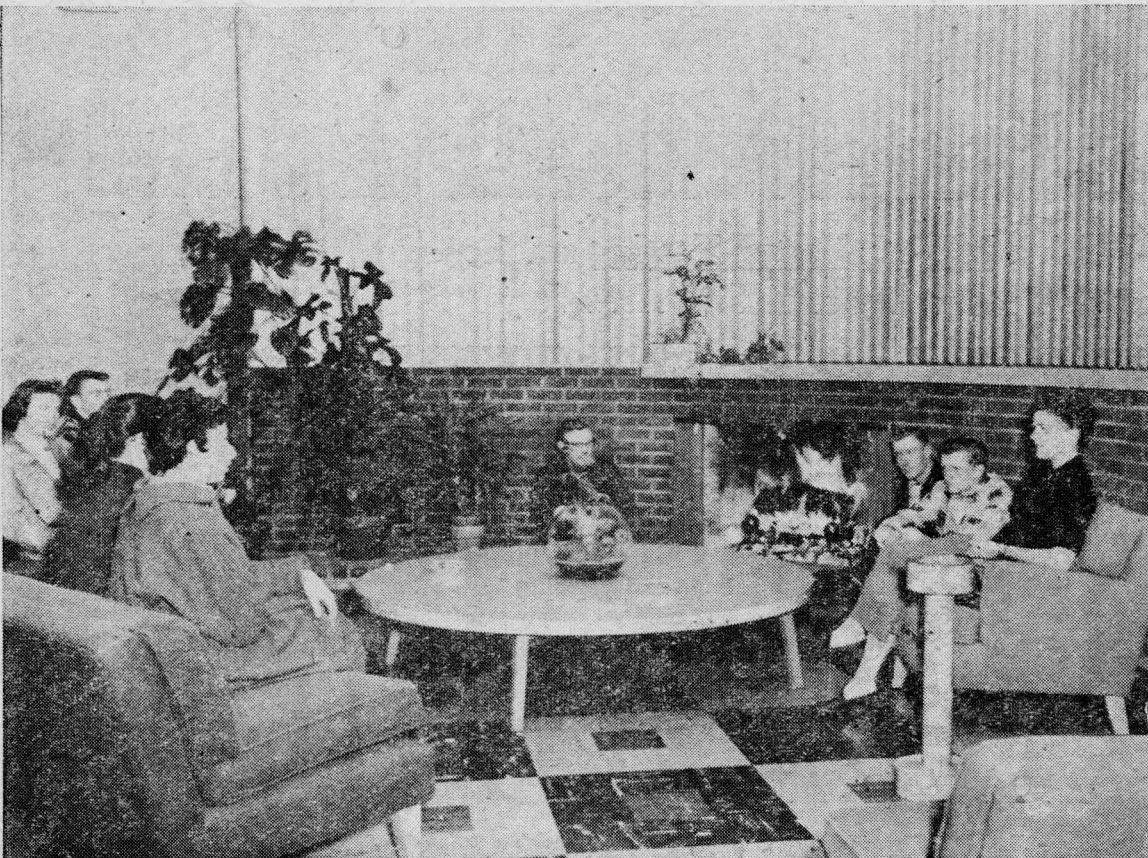
**CLEARING THE SIDEWALKS** is the job of maintenance man Jim Robbel, who is kept busy by the continuous snowfall that has blanketed Ellensburg for the past several months.



**GETTING A FACEWASHING** by Phil Mattingley is Sandy Greer. Others to take advantage of the weather are the sculpture classes of Richard Reinholtz, who sculpt in snow, and the students who enjoy ice-skating and tobogganing.



**SKI CLASS MEMBERS** learn fundamentals of the sport from instructor Art Schuab. A class in beginning skiing is offered daily, with the field behind the CUB devoted to learning.



**BY THE FIRE** in the lounge in the Union, students warm themselves from the frosty blasts of the outside. Counter-clockwise around the fireplace are: Lynn Williams, Lowell Erland, Peggy Wood, Kathleen Arnold, Phyllis Rockne, and Joanne Rombauer.



**CAMPUS AT NIGHT** takes on the magic of a winter wonderland as the snow drapes the grounds. Pictured here is the sidewalk which goes in front of the Kamola apartments and the Commons.