

3-6-1959

Campus Crier

Central Washington University

Follow this and additional works at: http://digitalcommons.cwu.edu/cwu_student_newspaper

Recommended Citation

Central Washington University, "Campus Crier" (1959). *CWU Student Newspaper*. Book 911.
http://digitalcommons.cwu.edu/cwu_student_newspaper/911

This Book is brought to you for free and open access by the University Archives and Special Collections at ScholarWorks@CWU. It has been accepted for inclusion in CWU Student Newspaper by an authorized administrator of ScholarWorks@CWU.

RO Picks Queen Barbara

Campus Crier

Central Washington College of Education

VOLUME 32, NUMBER 13

ELLENSBURG, WASH.

FRIDAY, MARCH 6, 1959

Royal Five Reign At Military Ball

Queen Barbara Blankenship will reign over the annual Military Ball, the "most formal of the formal dances," tomorrow night in Commons from 9 p.m. until midnight.

Queen Barbara's royal reign will continue throughout the coming year until her successor is named.

Royal princesses to Queen Barbara include Terry Randall,

Crier Backs Pin Tournament

Sports Editor Slates Meet

For the first time in the history of Central, an individual bowling tournament will be held to determine Central's number one bowler. The tourney is being sponsored by the Campus Crier Sports Department.

April 13 marks the start of the show which will last as long as the time is needed to complete all the entrants' bowling, Dick Rockne, sports editor, said today.

Trophies and prizes totaling \$250 are offered to first, second and third place finishers in the singles; first and second in the doubles, the high game without a handicap, the high four game series and the eight game all events winner. The latter two trophies are also given on a no handicap basis.

Bill's Bowl is the scene of the action. Full details and entry blanks will be found in the sports section of today's Crier.



Princess Nancy



Princess Jan

Queen Barbara Blankenship



Princess Terry



Princess Joy

Jan Kraemer, Joy Barsotti and Nancy Borum.

Theme for the dance is "Star Dust." Approximately 400 couples are expected at the dance. Corsages are definitely in order, Co-chairman Jerry Brong said.

Selected By Cadets

Queen Barbara was selected by ROTC cadets. Seventeen coeds were considered for Military Ball candidates. The field was then narrowed down to five coeds.

The cadets voted for the queen in ROTC classes.

Brong and Dick Boudreau are co-chairmen of the dance, sponsored by Arnold Air with assistance from Angel Flight. Capt. William Molchior is faculty adviser and Cadet Commander Doug Southerland is student adviser. Miss Mary Uber, Angel Flight adviser, is also working with the chairmen.

Governor Declines

Gov. Albert D. Rosellini was invited to attend the ball and accepted the invitation saying he would make every effort to attend "if the activities of the Legislature at that time did not confine" him to Olympia. Word was received early this week that Gov. Rosellini will be unable to attend the ball but hopes to attend the ROTC Spring Revue.

Arnold Air members have been silling tickets to the dance for several weeks. Tickets have also been available at the CUB Information Booth.

Graham Set To Play

Don Graham and his orchestra will play at the dance.

Honored guests include Lt. Col. and Mrs. Robert H. Bensch, Capt. and Mrs. William Molchior, Cadet Major and Mrs. Gary Robbins, Mr. and Mrs. John W. Fuller and Mr. and Mrs. Howard B. Robinson.

'Loud Red Patrick' Draws Big Crowd; Two Performances Remain For Cast

"The Loud Red Patrick," Winter quarter play, opened to a full house last night in the College auditorium. Two performances re-

main for the humorous, three-act play.

"Patrick" is a period play in a 1912 setting. The plot centers around an Irish-American widower with four daughters. The oldest daughter's plan to marry clashes with her father's plan to send her to college.

"The play has a definite tie-in with the 'Rights of Women' issue popular around 1912," Milo Smith, director, said.

The cast includes Jack Smith as Patrick, Karen Bainton as Mrs.

Gallup, Lynda Livesley as Rita Flannigan, and Penny Buchholz as Maggie Flannigan.

Warren Dayton as Ralph Penrose, Zena McKay as Rosalie Flannigan, Judy Storey as Mary Flannigan and Gene Slagle as Mr. Flannigan are also members of the cast.

Some of Smith's former productions include "Carousel," "The Song of Bernadette," "The Caine Mutiny Court Martial," and "Blythe Spirit." As director Smith chooses the play, casts it, directs,

designs costumes, sets and make-up, and supervises construction of the sets.

Members of the stage crew are Betty DeWalt, wardrobe mistress; Gary Bannister, stage manager; Concie Dallman, assistant stage manager; Jo Ardis and Pat Cooper, prop crew; and Mary Sue Dillon, sound engineer.

The Milo Smith home will be the scene of a spaghetti feed for members of the cast and stage crew after the performance tomorrow.

Co-Rec Set Saturday

Co-Rec will be held tomorrow afternoon from 1-4 p.m., Mauris Fox, Co-Rec chairman, said today.

Events will center around the Men's gym, Miss Fox said.

What's Going On

Tonight

"The Loud Red Patrick," 8:15 p.m., College Auditorium.

SGA Dime Movie, "Everything But the Truth," 7:15 and 9:30 p.m., CES Auditorium.

Saturday, March 7

Co-Rec, 1-4 p.m., Men's Gym.

"The Loud Red Patrick," 8:15 p.m., College Auditorium.

Arnold Air Society, "Military Ball," 9 p.m. to midnight, Commons.

Sunday, March 8

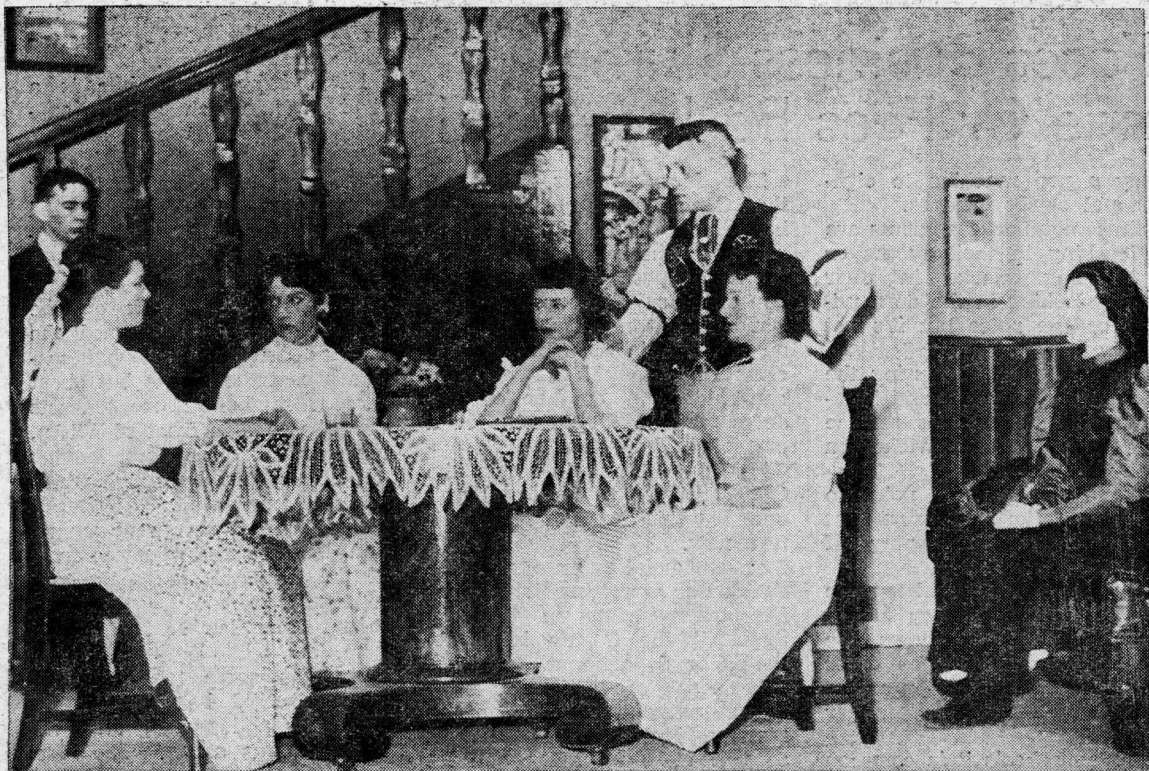
SGA Dime Movie, "Written on the Wind," 8 p.m.

Hanford Official Speaks At Club

Frank A. R. Slainken, an official at the Hanford atomic plant, will speak at the Science Club meeting Thursday, March 12 at 7 p.m. in S-100.

"The Challenge of Atomic Energy" will be the topic of Slainken's speech.

Slainken is a specialist in Employee Relations in the Irradiation Processing Department at the AEC's Hanford atomic plant.



UNDER THE DIRECTION OF MILO SMITH, the Flannigan family present the opening night performance of "The Loud Red Patrick" in the College Auditorium to a crowd of students, faculty and townspeople. Performances will also be given tonight and tomorrow night at 8:15 p.m. Seated around the table as the family council are Judy Storey, Penny Buchholz, Linda Livesley and Zena McKay. Looking on, left to right, are Warren Dayton, Gene Slagle and Karen Bainton.

campus crier

Telephone WA 5-1147 — WA 5-5323
Member
Associated Collegiate Press

EDITOR: MICKEY HAMLIN
Associate Ed.: Joyce Morrisson
Sports Editor: Dick Rockne
Assistant Sports Ed.: Mick Barrus
Feature Editor: Audree Bodner
Photographers: Shirley Joslyn, Bob Swoboda, Hansden, Bob Wilson, Bob Schaeffer, K Cartwright, Robin Dodman, Donna Caldwell, Gary Tubesing, Sharon Hardtke, Marie McIntosh, Larry Kaperick, Larry Fletcher, Billie de Jong.

BUSINESS-AD MGR.: MIKE DORE
News Editor: Dodie Malone
Adviser: Bonnie Wiley
Copy Ed.: Gaye McEachern
Photo Editor: Jim Chin
Reporters: Charlotte Hansen, Robin Dodman, Donna Caldwell, Sharon Hardtke, Marie McIntosh, Larry Kaperick, Larry Fletcher, Billie de Jong.

Published every Friday, except test week and holidays, during the year and bi-weekly during summer session as the official publication of the Student Government Association of Central Washington College, Ellensburg. Subscription rates, \$3 per year. Printed by the Record Press, Ellensburg. Entered as second class matter at the Ellensburg post office. Represented for national advertising by National Advertising Services, Inc., 420 Madison Ave., New York City.

Platter Chatter

'Greatest Hits' By Four Lads Big For Fans

By MICKEY HAMLIN

Fans of the Four Lads cannot fail to enjoy the latest Columbia waxing by the group, "The Four Lads' Greatest Hits."

It follows a bit too close on the heels of the four's "Breezin' Along" waxing, but the LP will no doubt find many fans.

The contents are—as the title would indicate—the group's best coin catchers.

Two million sellers of a few years back, "Moments To Remember" and "No, Not Much," bring back pleasant memories. More recent hits, "Enchanted Island," "Put A Light In The Window," "There's Only One of You," bring the platter up to date.

The Lads' first big one, "Mocking Bird," is included in the disk. Other tunes include "Who Needs You," "Istanbul," "Standing On The Corner," "Gilly Gilly Ossenfeffer Katzenellen Bogen By The Sea," "The Bus Stop Song," and "Down By The River Side."

The Four Lads have long been one of the most popular waxing quartets and this album should do its part in keeping them in the limelight.

Half-Notes: Latest tune to pass the million mark is the 23-year-old recording of "Indian Love Call," by Jeanette McDonald and Nelson Eddy. The pair waxed the song 23 years ago and steady fans finally pushed it over the million mark.

Broadway fans are eagerly awaiting the original cast pressing of "Redhead." Gwen Verdon, Lola of "Damn Yankees" fame, has the lead in the new musical which just opened on Broadway. Revues are not wild about the script but rave for Miss Verdon, who fortunately is more often on stage than off. Ditto for the record.

LITTLE MAN ON CAMPUS



"I SEE THEY'VE PATCHED THINGS UP."

Election Dates Draw Near

SGA Elections will be on campus not too long after the start of next quarter. Candidates must file for office not later than April 14, a scarce two weeks after Spring quarter opens.

The first two weeks of the new quarter will be busy with settling down and getting to work. Now is the time to think of candidates for the offices.

Offices to be filled include SGA Executive Council—president, vice president, secretary and treasurer, dorm representatives to the SGA Council and two members of Honor Council.

The positions are the ones which govern the campus. Many candidates are needed for each position to be sure the best qualified will be chosen by the voters.

Many would-be candidates are lurking about campus but they must be flushed out before they will think of running for an office, no matter how large or small.

The SGA Council—execs and representatives—is the most important student governing board on campus. The Council should not be selected from a few people. To achieve quality in office you need quantity in the running.

The Melting Pot:

Chess Team Seeks Start

Central's five member chess team is trying to establish a chess club on campus. The club would presumably compete with chess teams from other colleges.

It seems impossible that this foothold of culture might be established on campus, but it looks as though it may happen.

The five man team is inviting everyone to participate—even beginners. Faculty members are given special welcomes.

Further information may be obtained from Bob Kuvara, Dan Alspach, Dick Hiatt, Al Hayward or Jerry Murray. See 'em today, play chess tomorrow.

drapes if the material were furnished. In any case, the drapes should come tumbling down.

Many gripes are circulating concerning the office hours of SGA Executive officers. Many hours are posted but there is no one time that students can count on someone being in the SGA office.

Perhaps fewer hours could be listed and more observed.

\$100 A Year

Down The Drain

Approximately \$100 of CUB funds is being wasted every year—due mainly to magazine-collecting students. The CUB spends about \$100 on magazine and newspaper subscriptions each year.

New magazines have a habit of wandering off, usually the same day they are placed in the magazine rack.

Several downtown businessmen contribute subscriptions to the CUB in addition to the CUB magazine supply.

In the past heavy plastic magazine holders, similar to those used in the Library, were pur-

chased in hopes that the magazines would not stray.

Not only were the magazines taken, but the plastic holders disappeared also.

The few magazines which do escape the sharp eye and quick hand of the "collectors" are battered about until only a few pages remain for the student who wishes to read a magazine between classes.

The magazines are selected to appeal to all students. At the rate they remain in the lounge, no one gets full enjoyment from them.

CUB Snack Bar Faces Business Slump; Hours May Change Or Fees Be Increased

The CUB Snack Bar may be forced to close down evenings if business does not jump out of the present slump. This bombshell of news is the result of a slow rising trend to by-pass the CUB in favor of dorm vending machines or Ellensburg cafes.

The CUB Snack Bar, which is open from 8:30 a.m. until 10 p.m. daily, may be forced to close its doors much earlier in the evening. The Snack Bar is not designed to make a huge profit, it must simply make expenses plus a little more which goes for the general upkeep of the entire Union building.

If the Snack Bar closes early, or if it keeps its present time schedule, the decision will be in the hands of the student body.

Factors for drop off in business are numerous. Male students on probation are now restricted to the dorms after 7 p.m.

Many dorms are installing vending machines in the kitchenettes. Machines range from

simply a pop machine to cigarette and candy venders.

A large number of students are also cooking in their rooms or are keeping snacks in their rooms. Cooking in the dorm violates college rules but it's not the only rule violated.

Food peddlers are touring the dorms with doughnuts and hamburgers. Some campus service organizations sell sandwiches on Sunday evening.

All of these factors point to just one conclusion—business at the Snack Bar is dropping off rapidly.

The only solution to keep the CUB from losing money in the evening is to close down the Snack Bar earlier. One other alternative is to increase the CUB fee by several dollars per quarter.

In many schools it is common for the CUB Snack Bar to close down quite early in the evening. On larger campuses, the CUB itself is not used nearly as much as it is on Central's campus.

Curtain Rises On Spring; How About Some Changes?

All the world's a stage and the curtain is about to ring down on act 1959, scene Winter quarter. A brief intermission will separate the winter scene from the spring opening.

When the curtain does go up on Spring quarter, it would be good to see a different scene, a few new characters and, most of all, some different blocking.

Spring quarter is usually crammed full of activities and this year plans to be no exception.

Elections, Off-Campus's Spring Ball, the Coronation Ball with Billy May, Senior Day, Sweezy Day, the Spring quarter play, the Miss CWC contest, Munson's Sadie Hawkins' Day Tolo and a possible return visit by the Four Freshmen show that Spring will be well stocked with activities.

New backdrops for the activities—which are pretty much standard for Spring quarter—would take care of the new scene department. Chairmen and co-chairmen for many of these activities have already been chosen and work has begun.

These already selected chairmen and their soon-to-be-chosen helpers will in many cases provide new faces. With new actors in the leading roles the actions should take on a different perspective.

The main change should be a change in actions. The activities—with a few exceptions—are type cast Spring plots.

The only way to make them distinct is to vary the characters, provide different scenery and change the blocking.

The change in action requested of the various activities can also take place in the student body as a whole. Spring is a time to participate in activities, to dress comfortably and to enjoy one's self.

Class loads become lighter as sunshine gets brighter" (shades of the sports department's poetry corner) seems to be the motto of many students during Spring quarter.

Spring is about set to start the scene. Let's be ready and waiting when the curtain goes up.

Three Problems—

Flood, Mud, Landscaping

Two seemingly obvious improvements and one good suggestion may easily be made concerning campus improvement.

The first concerns the large

puddle which accumulates between the CUB and the Men's gym on rainy days or when snow begins to melt. Almost all men who live in the men's dorms use the sidewalk between the CUB and the Men's gym enroute to the dorms.

Located by the puddle is a light well, which admits sunlight to the CUB basement. It might be possible to use this for some type of a drain. In any case, a drain should be installed to get rid of the puddle problem.

Another rain-caused problem concerns the sidewalk on the right side heading toward the men's dorms. The sidewalk continues past the trestle but about three feet before it connects with the road in front of Wilson, the sidewalk disappears, leaving a section of mud through which students must walk.

The third improvement suggestion concerns the street in front of the CUB. It is blocked off to traffic except for deliveries to the Commons' kitchen, Men's gym, etc.

Perhaps some type of landscaping could be done to the sidewalks and parking strip adjacent to the street. The lawn is being quickly worn away by grass walker-oners.

Landscaping would save the grass and add to the general effect of the campus.

Several of the men's dorms have been putting out a little more work than usual and turning up with some well organized activities.

Wilson Hall gave a reception for Kamola last Friday. North Hall has given a series of successful privates. Kennedy also sponsored a private.

It's good to see originality produce well organized and enjoyable events.

The Women's gym is beginning to look like a collection center for the Salvation Army's rag depot. The "drapes" at the windows are in shreds, the linings are torn from some and are hanging below the drapes, some windows have only one drape, some have none.

It's evident that the drapes were purchased many years ago and have long since outlived their usefulness.

If funds aren't available to replace them, bare windows would look better than the present rags.

Perhaps the Home Ec department could do the work on new



PAINTING SIGNS FOR "LUST FOR LIFE," three members of Kappa Pi, national art honorary, help the Ellensburg Orthopedic Guild advertise for the forthcoming showing of the film. Shown here are, left to right, Doris Cook, Roger Berghoff, president of the club, and Marty Fosnacht. The film will be shown at 7 p.m. and 10 p.m. at the Liberty Theater, March 10.

Kappa Pi Hosts Special Art Show At Charity Film

Kappa Pi will present an art exhibit at the special showing of "Lust for Life" at the Liberty Theatre on Tuesday, March 10, Miss Ramona Solberg, club adviser, said today.

The movie will be presented by the Ellensburg Children's Orthopedic Guild. All proceeds of the movie will go to the guild. Price for the tickets will be \$1 per person.

There will be two showings of the movie: The first presentation will be at 7 p.m. and the second at 10 p.m.

"Lust for Life" is the life story of the Dutch artist, Vincent Van Gogh. The movie is in conjunction with the present art exhibit of Van Gogh's paintings now at the Seattle Art Museum.

Kappa Pi will present the art exhibition of its members' work in the lobby of the theatre to add to the attraction of the movie.

Signs announcing the movie have been placed around campus by Kappa Pi.

Tickets for the movie will be on sale in the CUB Information Booth Monday and Tuesday, March 9 and 10.

Gary Benson Slates Senior Piano Recital

Gary Benson will present his senior piano recital Monday, March 9, at 8:15 p.m. in the College Auditorium.

His program will include "Fantasia in C Minor" by Bach; "Sonata," Opus no. 5 by Brahms; "Noctuelles" by Ravel; "The White Peacock" by Griffes; and "What the West Wind Saw" by Debussy.

Benson will also perform a group of his own compositions.

3 Positions Open On Spring Crier; All Receive Pay

Applications are being accepted in the Office of Publications, M-102, for three Spring quarter positions on the Campus Crier, Miss Bonnie Wiley, adviser, said today.

The positions open include ad manager, business manager and feature editor.

Ad manager receives \$5 per issue; business manager, \$3.50; and feature editor, \$3.50.

The Crier is also seeking new reporters to work on the staff. Interested students may contact the Office of Publication or Mickey Hamlin, Crier editor, Miss Wiley said.

The final choice of students to fill the three paying positions will rest with the Board of Publications.

Two Coeds Schedule Senior Piano Recital

Sonja Zamzow and Twylla Gibb will present their senior piano recital Sunday, March 15, at 4 p.m. in the College Auditorium.

Miss Zamzow's program will include "Sonata, Op. 14, No. 1" by Beethoven; "Etude, in F Sharp Major" by Arensky; "Etude, Op. 25, No. 7" by Chopin; "Der Jongleur" by Tsch; and "Suite for Piano" by Paude.

Miss Gibb will offer "French Suite in B Minor," "Minuet and Trio," and "Gigue" by J. S. Bach; "Sonata in A Major" first movement (Theme with Variations) by Mozart; "Prelude No. 5, Bruyeres," by Debussy; and "Sonatina," "Bagpipes," "Bear Dance" and Finale by Bartok.

Dorm Pre-payment Due

Room and board pre-payment for next quarter will be due March 20, Kenneth Courson, college business manager, said today.

The \$72 may be paid at any time, he said.

Housemother Feebly Explains Tardiness To Munson Girls

By GAYE McEACHERN

The tables were turned Monday night when Munson Hall's House Council called the house mother, Mrs. Elinor Fisher, before it to account for her 17 minutes tardiness.

"I was busy painting and just forgot to keep track of the time," Mrs. Fisher feebly alibied.

The Council, however, was not accepting any excuses. They continued the questioning. "Well, no, I didn't try to telephone," Mrs. Fisher said. "But there was nobody there to answer the phone if I had."

Mrs. Fisher was reminded that there is also a phone on first floor.

"I didn't know the number," Mrs. Fisher said. "The telephone book wasn't with the telephone. I didn't ask for it because I thought maybe the family's telephone had been disconnected and I didn't want to embarrass them." Mrs. Fisher assured the Council

that she had been with respectable people.

After deliberating several minutes on the standards of Munson Hall and the actions of Mrs. Fisher, the Council pronounced sentence—confinement to the dorm one night each weekend until the end of the quarter.

GENUINE REGISTERED

Keepsake

DIAMOND RINGS

"Only Authorized Keepsake Dealer in Ellensburg"

JEWELERS

WA 418
5-2661 N. PINE

Liberty
WO. 2-4171

NOW • ENDS SATURDAY

KENNETH JAYNE
MORE-MANSFIELD

THE SHERIFF OF FRACTURED JAW

Also: Alaska Passage

SUNDAY • MONDAY

COLUMBIA PICTURES presents
RORY CALHOUN

APACHE TERRITORY

A MORVIC PRODUCTION
In EASTMAN COLOR

Double Feature

TARAWA BEACHHEAD

A MORNINGSIDE PRODUCTION • A COLUMBIA PICTURE

— TUES. ONLY —
Orthopedic Guild Benefit
"LUST FOR LIFE"

WEDNESDAY-SATURDAY

Universal-International presents
Tony Curtis, Janet Leigh
THE PERFECT FURLOUGH

CinemaScope—Eastman Color

Assembly Schedules Speaker With Latin American Topic

Hubert Herring, an authority on Latin America, will address Central's students in the College Auditorium on March 12 at 2 p.m. Herring's speech topic is "What has happened to our good neighbor policy?"

The colorful and variegated history of Central and South America provides Herring with a challenge he meets in books, teaching and lecturing.

"For the general reader and student alike, Hubert Herring offers the best available approach in print

5 Chessmen Seek Fellow Players; Object-New Club

The desire for a chess club at Central has become evident and the present five man team has plans for organizing such a club, Bob Kurara, spokesman for the team, said today.

"We welcome all chess players—even beginners. A special welcome is offered to faculty members who play chess," Kuvvara said.

Central's team was defeated by the Yakima Junior College Chess Club in a match held in CWC's CUB last week.

The Central team is made up of five students, Dan Alspach, Dick Hiatt, Al Hayward, Kuvvara and Jerry Murray. Of these, three of them, Alspach, Hiatt and Kuvvara, have played in previous matches. Hiatt and Kuvvara are high-ranking players.

Kuvvara is playing chess by mail in a postal tournament.

The match held here last week was won by a final score of Yakima, 7 and Central, 3. Each player played two games, making a total of 10 for the match.

Games not completed in the allowed playing time of an hour and a half were determined by Oliver La Fierriere, adjudicator.

La Fierriere, a graduate student at Central and resident of Yakima, is the president of the Yakima Chess Club and coach of the Yakima Junior College team.

Weekly meetings will be announced for persons interested in a chess club.

to an understanding of present-day Latin America. Rare is his combination of expert knowledge, accurate scholarship and lucid, zestful exposition," publishers of Herring's latest book commented.

A pioneer in North America's belated discovery of her Latin friends, Herring has been making an annual trip to the 20 republics to the South for the past 30 years. Since 1926 he has conducted annual



HUBERT HERRING

seminars in Mexico and since 1931 has undertaken similar ventures in the Caribbean, Central and South America.

In 1926 Herring organized the Committee on Cultural Relations with Latin America, one of the first agencies to practice the official "good neighbor" policy.

Herring is a professor of Latin American Civilization at Pomona College and Claremont Graduate School where he began teaching in 1944. Born in Winterset, Iowa, he graduated from Oberlin College in 1911, received his Master's degree from Columbia University a year later and was graduated from Union Theological Seminary in 1913.

Herring, in addition to his travels in Latin America, has made frequent trips to Europe.



HIP, HIP, HURRAY for the GREYHOUND® way to save money!

Got the good word about Greyhound Scenicruiser Service®? It's the latest, the greatest way to go... with air-conditioning, picture windows, air-suspension ride and complete restroom! You'll have a ball headin' home on a Greyhound—it's often faster than other public transportation, and always less expensive!



COMPARE THESE LOW, LOW FARES:

Seattle	\$ 3.10
Portland	6.20
San Francisco	20.55
Los Angeles	25.85

*plus tax

BAGGAGE PROBLEMS? You can take more with you on a Greyhound. Or, send your belongings by Greyhound Package Express. They arrive in hours and cost you less!

IT'S SUCH A COMFORT TO TAKE THE BUS...AND LEAVE THE DRIVING TO US!



THERE'S A GREYHOUND AGENT NEAR YOU

Join the Parade to NB of C

We are proud of our association with the students and faculty at Central Washington College of Education.

We offer complete banking service including a Special Checking Service designed especially for students.

See Us Today!

ELLENSBURG BRANCH

The National Bank of Commerce of Seattle

Member F.D.I.C.

Crier-Hyakem Brochure Explains Paid Positions, CWC Journalism

The new Crier-Hyakem brochure has recently been published and is ready for distribution, Miss Bonnie Wiley, Office of Publication, said today. The brochure contains information about the two publications, the paid positions and the journalism courses offered at Central.

The journalism department at Central offers a three-pronged program of courses. In the first place it prepares students for teaching journalism. Secondly, a student may obtain training for reporting for a newspaper.

In co-operation with the University of Washington, students at Central may take the pre-professional sequence and transfer to the University with full transfer of credits.

"Journalism offers good training for any kind of writing," Miss Wiley said.

"Several students have found the courses profitable with financial returns from selling stories written for the advanced reporting and feature writing course," she added.

Two courses are offered Fall quarter. Introduction To Journalism is a two-hour course. High School Publications provides training for students who will teach journalism or advise a high school annual or newspaper.

Winter quarter features a news-writing course, which involves the

Kindergarten Discovers Spring Isn't Far Away

It's very nearly spring. Ask any member of the CES kindergarten or their teacher, Miss Barbara Kohler.

Out on a "field trip" around Central's big, wide campus last Friday afternoon, the kindergarten pupils, marching two by two, found—of all things—a dandelion in bloom.

Carefully picking it—with a nice, long stem—they carried it proudly to the Office of Publications and left it there as proof that winter's gone and spring's not far behind.

Their next goal—a bird's nest.

Off-Campus Plan April 10 Dance; Townsman Play

Off-Campus will sponsor its annual Spring Ball April 10 at the Vista House. Tickets will be \$1.75 per couple.

The Townsman will play at the dance which will last from 9 p.m. until midnight. Dress for the dance will be semi-formal, suits for men and "dresy dresses" for the women.

Theme for the dance will be "Nautical But Nice." Corsages are not in order.

techniques of fast and efficient reporting.

During Spring quarter editing along with advanced reporting and feature writing are offered. Editing teaches the make-up and layout of the paper.

Spring Registration Starts March 30; Ends On Tuesday

Registration for Spring quarter will begin in alphabetical order Monday, March 30, at 7:45 a.m., Perry Mitchell, registrar said today.

The first step in registering will be to appear at the dean's office at the designated time. Previous students must present SGA cards.

A slight change in procedure will be made from last quarter's registration. Students are to go to A105 directly from the dean's office and then to the Business Office to pay fees.

A registration packet will be received in the hall outside the Registrar's Office at which time a receipt must be shown. The receipt is also a ticket into the Library.

One must pass the final check table to leave the Library. Registration will not be completed and credit for classes will not be given if the table is overlooked, Mitchell said.

The alphabetical time schedule for registering for Spring quarter is as follows:

Time Schedule

Monday, March 30, 1959

Time	Latest	Time	Latest
H	7:45 8:40	Sa-Sma	11:15 12:00
I, J	8:10 9:05	Smal-S's	1:00 1:55
K	8:30 9:25	T	1:30 2:25
L	8:50 9:45	U, V	1:45 2:40
M	9:20 10:15	W	2:15 3:10
N	9:45 10:40	X, Y, Z	2:45 3:40
O	10:00 10:55	A	3:15 3:55
P, Q	10:15 11:10	Late Registrants	3:45 4:35
R	10:45 11:40		

Tuesday, March 31, 1959

Time	Latest	Time	Latest
B	8:00 8:55	F	9:50 10:45
C	8:30 9:25	G	10:30 10:25
D	8:55 9:50	Late Registrants	10:45 11:45
E	9:25 10:20		

Teacher Education Exam Set; Test Plans, Descriptions Offered

By JOYCE MORRISSON

April 15 has been set as the Spring quarter date for teacher education examination tests, Dr. E. E. Samuelson, dean of students, announced today. Summer quarter tests will be given July 8.

A complete plan has been compiled for administering the screening examinations, he added.

The plan designates what tests are given and who is to take them.

Arithmetic Reasoning. Taken by all student applicants.

Arithmetic Computation. All student applicants.

English Usage. Student applicants scoring below twentieth percentile on test given at the end of the quarter to English 201 students.

Spelling. Student applicants scoring below fifteenth percentile on the test given at the end of the quarter to English 201 students.

Reading Comprehension. Student applicants scoring below twenty-fifth percentile on the reading comprehension test given at freshmen college entrance exams.

Penmanship. All student applicants.

The plan lists the special requirements for transfer students. The tests they must take are as follows.

English Usage. English usage test should be taken if transfer grades in English composition average below 2.00 (C).

Spelling. Spelling test should be taken.

Reading Comprehension. Test should be taken if score on A.E.C. is below the thirtieth percentile.

Arithmetic Reasoning and Arithmetic Computation. Test should be taken in all cases.

Penmanship. Test should be

taken by all transfer students.

Students Responsible

All students are responsible for making necessary arrangements to be on hand for these tests, Dr. Samuelson said. From now on the tests will be offered only once during each quarter, he added.

Tests are scheduled in the College Auditorium in the afternoon. Starting next year the test dates for each quarter of the school year including Summer will be announced at the beginning of Fall quarter.

Five Step Sequence

The sequence of teacher education application is completed in five steps, Dr. Samuelson said.

First, the student applies in the psychology and education department office. The office then determines the eligibility. If he is deficient, he must check his test file and academic record in the dean of students' office.

After remedial work on his own through tutoring or books, the student then retakes the test.

The number of times a test may be given will be restricted, Dr. Samuelson said.

Patronize Our Advertisers

Flowers for All Occasions
Order Corsages Today
for the Military Ball

"Designers With 20 Years Experience to Advise You"

Delsman's Greenhouse

We Deliver

315 West 8th

WA 5-8217

A new idea in smoking!

Salem refreshes your taste

CREATED BY R. J. REYNOLDS TOBACCO CO., WINSTON-SALEM, N. C.



- ★ menthol fresh
- ★ rich tobacco taste
- ★ modern filter, too

Think of a refreshing Spring day like this, if you want to know just how a Salem Cigarette refreshes your taste. Rich tobacco taste with new surprise softness... that's Salem. Through its modern, pure-white filter flows the freshest taste in cigarettes. Smoke refreshed pack after pack... smoke Salem.

Take a puff... it's Springtime

Concert Quartet Set Central Visit

The Chanticleers, American concert quartet, will be the featured performers in another of the Community Concerts scheduled for the Ellensburg area. They will perform Wednesday night, Mar. 11, at 8:15 in the College Auditorium.

The group is now in its sixth season of existence and making its third consecutive coast-to-coast tour.

Members of the Chanticleers include William Diard, Richard Wright, Raymond Keast and James Martindale; tenor, tenor, baritone and bass, respectively. They are accompanied by pianist, Herman Allison. Two unusual features of their programs have occasioned a great deal of comment: the mobile and imaginative staging of Gene Bayliss; the arrangements and musical direction of Donald Smith.

Several months of preparation have gone into the programs being sung by the Chanticleers on the quartet's current tour. Over half the songs are new items in their repertoire, many of the others, such as the Gilbert and Sullivan "Fantasy," are popular Chanticleers' favorites.

Sweezy Day Date Set For May 27

The SGA Council rescheduled Sweezy Day for May 27 at its Monday night meeting. The Council had previously approved May 20 but conflicts with the Spring quarter play made the change necessary.

The Council also appropriated funds to subsidize the Sweeciens' trip to Seattle this weekend at which they, the college dance band, will appear at a music conference.

The Council allotted funds to send Elena Placci, Jim Haun, Gay Ardis and Jerry Penningroth to the International Student Relations Seminar to be held March 13-15 at the University of Idaho.

Penningroth is Central's ISRS co-ordinator.

Crippled Children Show Handiwork

Leather goods made by crippled children under the instruction of Bob Lym, Central student, will be on display in the Industrial Arts building this week and next.

Lym, a junior, started the class last fall under the special education program for handicapped children in the Ellensburg schools. His class is a secondary ungraded group.

At first Lym worked on the project alone, begging leather scraps from local workshops for class materials. The children in the class, ages 10-14 years, proved the worth of the project and it is now supported by the Cascade School.

"Many persons were skeptical of the handicapped children's ability to do this type of work," Lym commented. "However, what the children lack in mental capacity and coordination they make up for by developing a creative ability with their hands. For many children this will be the first project they have ever worked on and completed by themselves."

He teaches students who are orthopedically handicapped, hard of hearing, cerebral palsied, emotionally disturbed, mentally retarded and who have brain damage.

"I enjoy the work," he said, "and I do plan to follow through with it after graduation."

Lym teaches the class daily from 10 a.m. He receives no pay for his work.



DICK ROCKNE, CRIER SPORTS EDITOR, checks over last week's announcement of the bowling tournament sponsored by the Crier Sports Department, April 13. Shown also are the many trophies to be offered to the top male bowlers in the tournament. A charge of \$2.50 will be made for each event a contestant enters. For complete information on the pin tourney and entry blanks, see page 6 of this week's Crier.

Backstage Cast Plays Big Role In Successful Play Presentation

By LARRY FLETCHER

The Winter quarter play, "The Loud Red Patrick," has many "backstage stars" who play an important part in the play.

Betty DeWalt, wardrobe mistress, made all the costumes that were not already in stock. All the costumes are in keeping with the 1912 setting of the play. Miss DeWalt also does other stage work, stage such as covering chairs, etc.

Mary Sue Dillon as sound engineer has many duties to perform in "Patrick." She is in charge of the theme music at the opening and between the acts of the play. She also has to create such sound effects as car horns, the sound of a hurdy gurdy passing and buzzer sounds.

The stage manager and his assistant, Gary Bannister and Concie Dallman met a few problems for this play. In an attempt to gain realism, they had to create, with special lighting, the effect of gas lights prevalent during the early nineteen hundreds. Miss Dallman also acquired such duties as taking notes for Milo Smith, director.

Jo Ardis and Pat Cooper, prop crew for "The Loud Red Patrick," expressed pleasure that they were fortunate in acquiring props for the play. Everything was easily found and there were no long

searches and frustrations in hunting for desired articles.

"The Loud Red Patrick" gave its first performance last night and will present its second performance tonight. The last performance will be Saturday evening.

Student Shows Slides Of Europe, World Fair

Roland Emetaz, student guide at Brussel's World's Fair, will show colored slides which he took while in Belgium at a 2 p.m. assembly March 10 in the College Auditorium. Emetaz will show his audience, in 50 minutes, many of the things he saw during his six months in Belgium.

Emetaz is a former CWCE student who was one of the six college students from the State of Washington selected to act as guides in the United States Pavilion at the Fair.

Home Concert, TV Programs Highlight 5-Day State Tour

The 70-voice concert choir, the Central Singers, begins its annual Spring tour Sunday, April 5, with a home concert at 8:15 p.m. in the College Auditorium. The five-day tour will include performances before 10 high school audiences, one junior college, the Seattle Rotary Club and two television appearances.

Guest soloist with the Central Singers this year will be Dr. Herbert Bird, violinist. Dr. Bird has been a member of the music faculty at Central for 12 years and is recognized through his many recital and other public appearances as a fine violin soloist, Wayne Hertz said.

He holds degrees from Oberlin College, B. Mus., Teachers College, M. A., and the Doctor of Musical Arts from Boston University. Dr. Bird has studied with Raphael Bronstein, George Bornoff, Louis Persinger and other eminent violin teachers.

Hertz, director of the Central Singers, has been associated with the choir for 21 years. Assistant directors of the choir are Joseph Haruda and Frank Prather.

The schedule is as follows: April 5—Home Concert; April 6—Ellensburg High School; Chief Moses Junior High School, Moses Lake; Moses Lake High School; Eastmont High School, East Wenatchee; April 7—Wenatchee Junior College; Monroe High School; Foster High School, South Seattle.

April 8—Kent-Meridian High School, Kent; Seattle Rotary Club, Olympic Hotel, Seattle; Station KOMO-TV, Captain Puget; First Methodist Church, Bremerton.

April 9—East High School, Bremerton; Central Kitsap High School, Silverdale; South Kitsap High School, Port Orchard; University Baptist Church, Seattle; April 10—Cleveland High School, Seattle; Station KING-TV, Bill Corcoran; Issaquah High School.

The Singers will also give four evening concerts in Eastmont High School, East Wenatchee, on April 6, Foster High School, South Seattle, on April 7, First Methodist Church, Bremerton, on April 8, and the University Baptist Church, Seattle, April 9.

During the past 20 years the

Central Singers have gained an enviable reputation for their excellence of performance before local, state and national groups, Wayne Hertz, director, said today.

They will perform a varied program of 14 choral numbers ranging from early polyphony to selections in the modern idiom. Works by Johannes Brahms, Heinrich Schütz, Leo Hasler, E. Paladilhe, and Gustav Schreck will be programmed with many contemporary composers.

Student soloists include Twylla Gibb, Walla Walla. Marilyn Legge, Spokane; and Phyllis Reynolds, Bremerton, all sopranos; contralto Moani Johansen, of Springville, Utah; tenors Wayne Calkins, Seattle, and Frank Prather, Arlington; Jerry Semrau, baritone, of Seattle. In her home town of Bremerton, Miss Reynolds will sing a group of soprano selections.

Play Set By Drama Club Of Wenatchee College

"A Midsummer Night's Dream" will be presented at Central April 2 at 7:30 p.m. by the drama group from Wenatchee Junior College.

It will be presented in the College Auditorium.

Tickets will be on sale at the box office from any AAUW, or from Miss Beatrice Haun, college librarian, for 45 cents, with SGA cards.

"Flowers Are the Way to Her Heart" buy them at Valley Florist 404 N. Pearl

A-408A

MAKE US YOUR HEADQUARTERS FOR KODAK

Film • Cameras • Photo Aids

BROWNIE Star CAMERAS

These snapshot cameras make color slides, too!

Just imagine! These remarkable cameras make all three kinds of pictures—black-and-white snaps, Kodacolor snaps, and color slides with new Kodak Ektachrome 127 Film. Easy, too—turn a lever to the type of film you're using (color or black-and-white) . . . then just aim and shoot. Lowest prices—ever!

FROM \$5.95

BOSTIC'S DRUG STORE
Fourth and Pearl



Portraits for All Occasions

Remember your loved one

GRADUATION
WEDDINGS
BABIES
COMMERCIAL

Don't Wait Too Long for Those Graduation and Placement Portraits
No Sitting Charge for CWCE Students

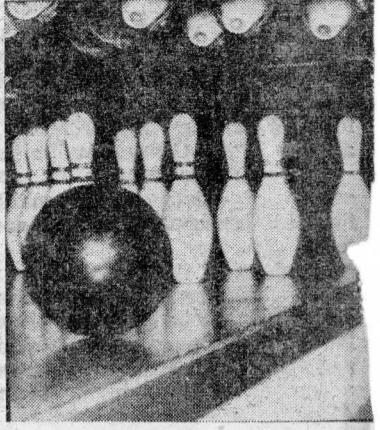
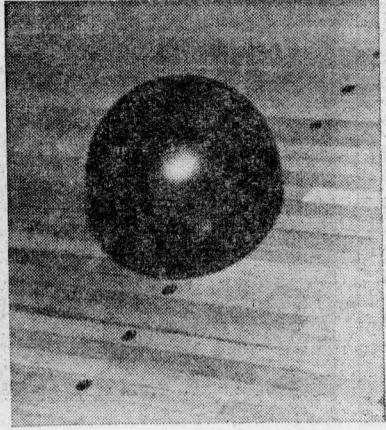
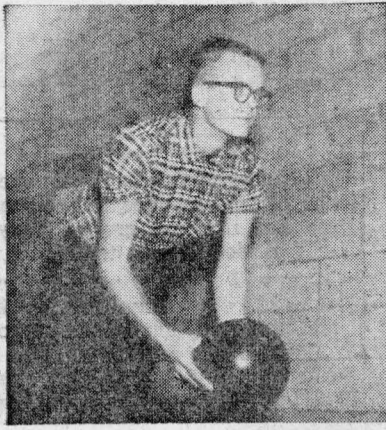
PHOTO CENTER STUDIO
311 N. Pine WA 5-8641

DEAN'S
Feature of the Week
"PETER GUNN"

The biggest selling album across the nation, the fastest selling theme song from a TV production, the jazz with the great appeal—that "Peter Gunn."

WA 5-7451 3rd and Pearl

Pin Tournney Needs Entries



DICK ROCKNE, CRIER SPORTS EDITOR, shows his typically fouled up form in sending a bowling ball down the alley. In the first shot he sets himself for what he hopes will be a strike. In the second picture he shows the beginning of his downfall, extremely awkward. Finally he releases the ball, in the third cut, and the 16 pound weapon rolls down the alley in quest of the much wanted

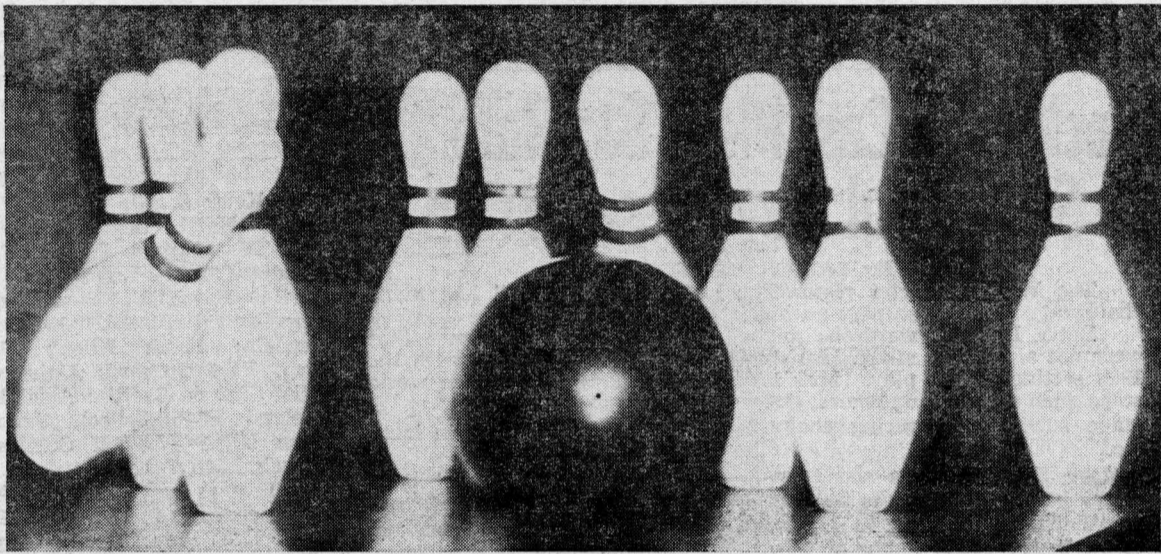
pins. The ball appears to be coming into the 1-3 pocket, in the last picture, however, as usual, a very nice split came up completely demoralizing the local sports scribe. Rockne is working with Don Hilling, Bob Kuvvara and Bill Wales in sponsoring the Crier All-College Bowling Tournament.

Rules Regarding Tournament Set

Here are the rules regarding the Crier All-College Bowling Tournament:

1. Entrants must be male students of Central Washington College.
2. Entry blanks found in today's Crier, or reasonable facsimile, must be turned into the box at the CUB Information Booth before Friday, April 10 at 6 p.m.
3. Handicaps used must be one used in a current league in Ellensburg. The handicap as of March 13 is the one to be used in this tournament.
4. The \$2.50 fee per event must be paid in the Crier office before the tournament, or at Bill's Bowl before bowling in the tournament.

STRIKE!



Six Centralites Hit Big Scores, Eugene Next

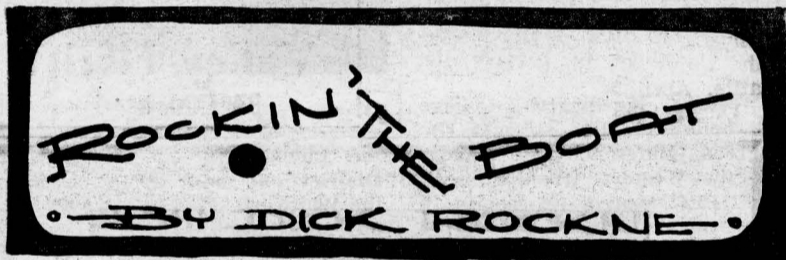
Six Central bowling aspirants have been selected to represent Central Washington College in bowling tournament in Eugene, Oregon at the University of Oregon.

Team members were chosen after bowling 12 lines with highest average among the entries selected to participate.

High man was Gary Cowles with an average of 186. Al Clausen and Don Bolton came close to tying with 184.7 and 184.5 respectively.

Fourth and fifth men, Roger Olson and Bud Clark, both rolled tying scores of 182.58. Wayne Kamp finished his 12 line qualification with a total of 181.4.

Two spare pinsters were picked in the event that one of the team cannot make the trip. Jack Sherr and George Booth were given alternate positions after they posted pin tallies of 180 and 179 respectively.



Entries Accepted

It's time to move, bowlers. The CRIER ALL-COLLEGE BOWLING TOURNAMENT entries are now being accepted. The pin show, to determine the best male bowler on the Central Washington College campus, will become a reality if the men student bowlers show interest and support what could become an annual event.

"All men students are invited to compete for the trophies and prizes which will be given to the top finishers in both singles and doubles," Dick Rockne, Crier sports editor, said.

April 13 is the date scheduled for the start of the tournament and it will continue until all of the entries have bowled their required four lines for each event. Bill's Bowl is the site of the contest.

A \$2.50 entry fee will be charged to each contestant for each event entered. This also covers the four lines of bowling. If the entrant enters both the singles and doubles, the fee is \$5.00. This entry fee can be paid in the Crier office between now and April 13. After that time the bowler must pay his fee before he takes to the alley to bowl.

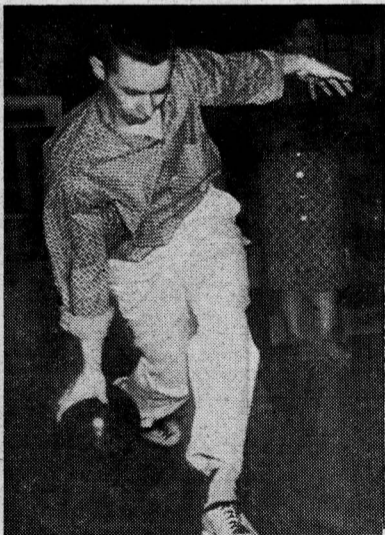
Handicaps will be used to determine the winners of both singles and doubles. If the entry is bowling in any league in Ellensburg he can use the handicap in that league as a handicap in the tournament. If the contestant is not bowling in a league he automatically takes a 170 average and his handicap is worked from there. This gives anyone a chance at winning a trophy. Trophies will be given to the highest game bowled without a handicap as well as the highest four game series and the highest eight game all events.

"If a required number of entries are not received by the starting time, the trophies which have been planned will have to be replaced by some not quite as attractive," Rockne said.

Entry blanks can be found in today's Crier and may be deposited, after being filled out, in the ballot box in the CUB Information Booth.

The Crier All-College Bowling Tournament is ready to roll. All it needs now is bowlers, and bowlers, that means you. Anybody can win in this tournament to decide the outstanding bowlers on the Central Washington College Campus.

Laying the ground work for this initial effort at such a tournament was Don Hilling. Hilling was the backbone for the present school league. He went to the MIA for help or assistance in getting an intramural bowling program started here but was not given the help. He then went out on his own and rounded up enough teams to put on a very successful league. Incidentally his Wilson Hall team is currently leading the Tuesday night league at Bill's Bowl, however, it wasn't planned, it just worked out that way.



Don Hilling

The trophies and prizes which Hilling has rounded up are extremely beautiful. They are a great deal nicer than the Ellensburg City Tournament awards. A great many trophies have been arranged for, however, we need entries in order that all of them may be purchased.

Let's get out and support this, bowlers. An entry blank can be found at the bottom of this column. Cut it out and turn it in to the CUB information booth or the Crier office.

Entry Blanks

Here is an official entry blank for the Crier All-College Bowling Tournament. The fee of \$2.50 per event will be due before you take to the alley to bowl. You can either pay your money in the Crier office anytime beginning today or pay before you bowl at Bill's on your scheduled time to bowl. Please submit your entry blank soon.

CRIER BOWLING TOURNAMENT ENTRY BLANK

Name..... Box No.....

Time and Day when I can bowl (either Monday through Friday between 4:00-6:00 p.m.)

Event: Singles..... Doubles..... Both.....

Doubles Partner.....

League Currently Bowling In (If any).

Handicap (if any) If none (just check).....

Signed

★ STAR SHOE SHOP ★

Fred Stockstill, Proprietor
428 No. Pine Street
Ellensburg, Washington



"COKE" IS A REGISTERED TRADE-MARK. COPYRIGHT © 1959 THE COCA-COLA CO.

Abracadabra

Foolish boy—the best way to make a bottle of Coke disappear is to drink it! Yes, swallow after swallow, that cold crisp taste is so deeply satisfying . . . and the lively lift is so bright and cheerful the whole day seems happier, just like magic. So open sesame! Just uncap the bottle and get ready for The Pause That Refreshes!

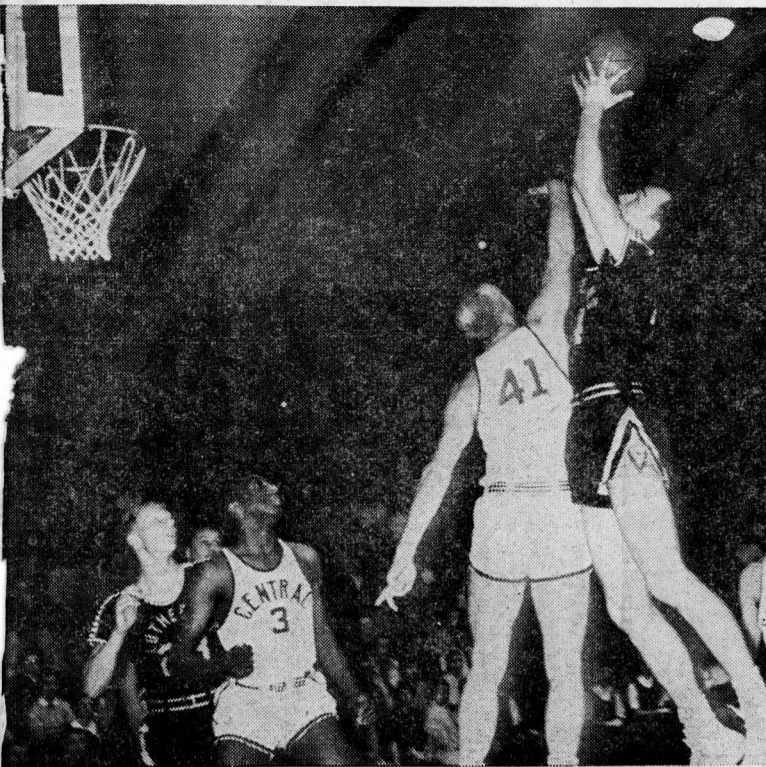


BE REALLY REFRESHED...HAVE A COKE!

Bottled under authority of The Coca-Cola Company by

ELLENSBURG COCA-COLA BOTTLING CO.

PLC Closes Out Season With 92-65 Win



BILL BIELOH, OF CENTRAL, scraps with Bob Roiko of PLC for possession of the basketball during the Wildcats last game of the season. PLC won the game 92-65.

Inspiration, Captain Awards Made; Team Selects All-Conference Five

Wally Loe, Central Washington Wildcat forward, has been selected by his teammates for the team's inspiration award for the season just completed. The 6'6" senior from Molson, Wash. has now received four letters for his efforts on the maple.

Bill Bieloh, senior forward from Ellensburg, was voted by his teammates to receive the honorary captaincy for the past season. Bieloh has also earned four letters on Central cage quintets.

The members of the squad also picked an all-conference team for the season just completed. Central players were not considered in their selections.

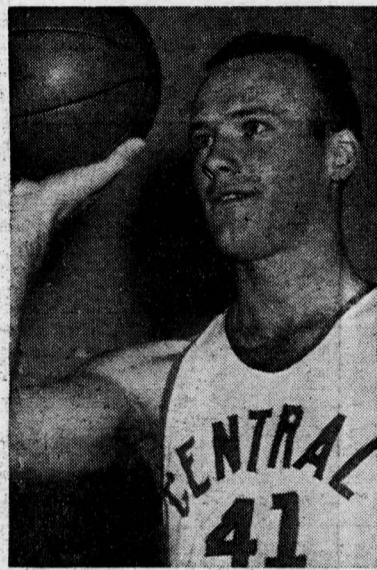
On the first five were Kent Matheson from Eastern; Ray Washburn, from Whitworth; Chuck Curtis, Jim Van Beek and Roger Iverson, from PLC. All are seniors except Washburn who is a sophomore.

On the second team are Bill Wright, from Western; Ken Winslade, from UBC; Nello Morganti, from Western; Walt Hartman, from Eastern; and Jack Alzina, from Whitworth.

Central closed out its 1958-59 season with a 12 won 11 lost record. They finished with a 4-8 mark in Evergreen Conference play.



Wally Loe



Bill Bieloh

'Cold Spot' Cools Wildcats

The Evergreen Conference champion, Pacific Lutheran, hit their first three shot attempts and rolled to a 92-65 victory over the Central Washington Wildcats, February 25. It was the final game for Central who rang up a 12-11 season record. In conference play they wound up with a 4-8 record as opposed to an undefeated league standard by the Lutes.

Again it was the "dead eye trio" that "bugged" the local five. Roger Iverson hit 23 points, Jim Van Beek collected 20 and Chuck Curtis hit the bucket for 17. Joe Henderson racked up 21 for the Wildcats cause.

PLC Roars

PLC roared to a quick 23-10 lead in the first eight minutes and it appeared the visiting five would make a runaway of the game. At this point the Cats staged a mild rally and the local fans began to get steamed up.

Henderson hit a bucket, Willie Minor scored, Wally Loe slipped through a two pointer and Norm

Erken bulled his way for a basket. That brought the score to 23-18 and the Lutes called a time out.

The game stayed even for the remainder of the first half and the intermission score read, 45-37 in favor of Parkland.

Loe Hits

Loe started out the second half with a quick two pointer and it appeared Central was not out of the game. However, at this point a cold spell set in over the Cat basket and they went seven minutes without a point.

While this was going on, PLC scored 16 points to "ice" the game away. The remainder of the contest was played fairly even.

Larry Poulsen, a Lute freshman, showed he could develop into a good replacement for the graduating Curtis. He popped in four field goals and a free throw the short while he was in the game. Poulsen was a member of Shoreline High School's first graduating class in Seattle.

Norm Erken Clicks

Norm Erken, of Central, proved he could be another Joe Kominski before he is through with roundball at Central. He showed excellent ability on the backboards and uncorked a hook shot that shocked the assemblage at the high school gym.

The game closed out a mediocre season for Central. They started out fast with three victories over SPC, St. Martins and Portland State. The next two games were lost to Lewis and Clark and Portland State. Whitman, Whitworth, and the University of Alaska then fell before the Cats. Whitman upset the local five in a return bout. The pre-conference slate was closed out with a win over St. Martins.

The conference season showed wins over UBC, CPS twice and Western Washington. The remainder of the league encounters were lost.

A victory over Seattle Pacific was checked in on February 19.

Lutes Win Title, Kansas City Next

The PLC Gladiators have won the right to represent this district in the NAIA National Tournament at Kansas City later this month.

The Lutes won three straight playoff games to receive the honor.

Western Washington College fell before the five straight Evergreen Conference title holders for the Western Washington title. PLC scored 105 points in the contest.

Last Monday and Tuesday saw

the Lutes wrap up the NAIA District one title by trouncing the Whitworth Pirates 97-65 Monday night and 97-56 Tuesday evening.

Do You Think for Yourself? (THIS SHORT QUIZ WILL TIP YOU OFF!*)



1. When your friends impart confidences, do you feel (A) uncomfortable, or (B) complimented?

A B



5. Do you find that you work or study more effectively (A) under supervision, or (B) on your own schedule?

A B



2. Do you prefer a task which demands (A) the organization of complex details, or (B) a constant flow of ideas?

A B



6. Is it your feeling that close friendships with superiors would be (A) a great help, or (B) actually a hindrance to your career with a firm?

A B



3. Would your first reaction to a difficult committee appointment be that you had been (A) "stuck," or (B) honored?

A B



7. Which, to your mind, has the greater influence on you in making a good grade: (A) the instructor, or (B) the subject matter of a course?

A B



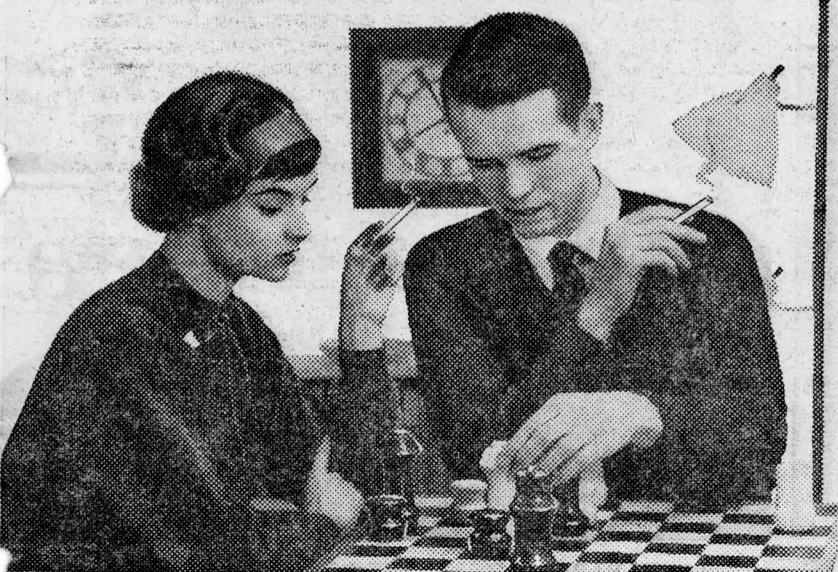
4. If you were a contestant on a quiz program which of these question categories would you prefer: (A) popular songs of today, or (B) current events?

A B



8. Do you believe that the saying "haste makes waste" is (A) always true, or (B) often false?

A B



9. Which would weigh more heavily in your choice of filter cigarettes: (A) the opinions of friends with similar tastes, or (B) your own considered judgment?

A B

It is usually the case that men and women who really think for themselves come around to VICEROY as their brand of filter cigarette . . . for two very good reasons: VICEROY is the one cigarette that gives them a thinking man's filter and a smoking man's taste.

**If you checked (B) on any six of the nine questions . . . you really think for yourself!*



Familiar pack or crush-proof box.

The Man Who Thinks for Himself Knows — ONLY VICEROY HAS A THINKING MAN'S FILTER . . . A SMOKING MAN'S TASTE!

FOCUS ON CENTRAL...

'Loud Red Patrick' Opens; Two Performances Remain



"HERE LET ME HELP YOU WITH THESE," Mr. Finnigan says to Mrs. Gallup, the housekeeper, as he helps her clear off the table. Gene Slagle plays the part of Mr. Finnigan and Karen Bainton is Mrs. Gallup. The play opened last night in the College Auditorium.



THE MEETING OF THE FLANNIGAN FAMILY COUNCIL is called several times during the play. In this case Rosalie (Zena McKay, left) presides over the council as they decide whether Mr. Finnigan an old friend of their father's can live with them. Shown also, left to right, are Penny Buchholz, Jack Smith, Judy Storey and Linda Livesley.

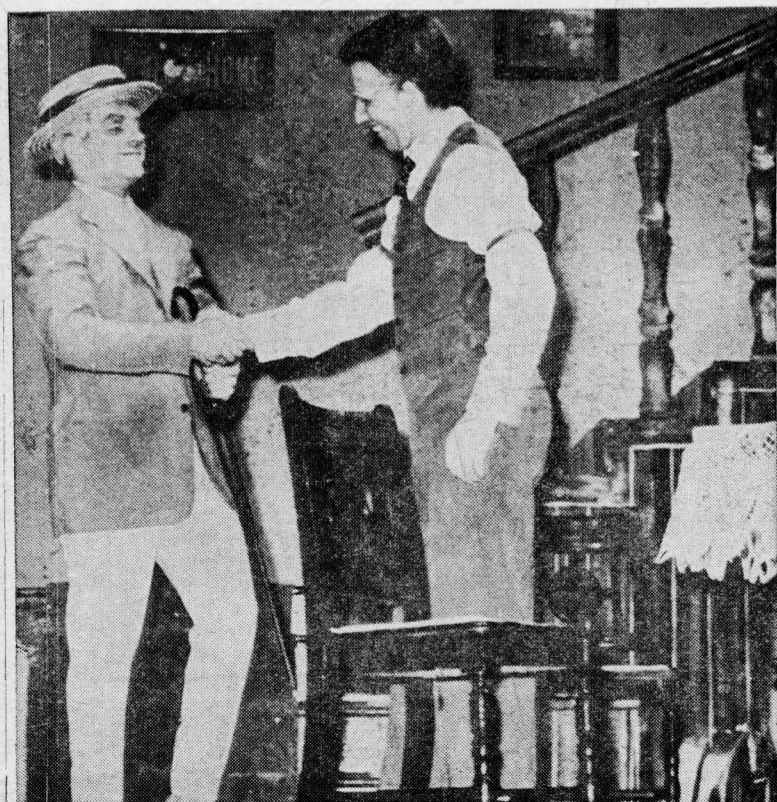


"SAYS HERE IN THE PAPER, no change in the gas policies," Mr. Finnigan says to Mr. Flannigan as they speculate over the newspaper report. The gas business figures in the love match between Maggie Flannigan and Ralph Penrose.



THE CAST OF "THE LOUD RED PATRICK" presented the opening performance of the play last night in the College Auditorium. It will also be presented tonight and tomorrow night at 8:15 p.m. "Patrick" originally opened on Broadway and ran for 93 successful performances. The play is set in the home of Patrick Flannigan, a widower with four lively daughters, one of which sets the plot of the story. Maggie Flannigan (Penny Buchholz) wants to marry

Ralph Penrose (Warren Dayton). Her father is definitely against it, wanting to make a college woman out of her. Shown in the above picture are, left to right, Judy Storey, Warren Dayton, Penny Buchholz, Zena McKay, Linda Livesley, Jack Smith and Gene Slagle. In the cast but not included in the picture is Karen Bainton.



"HELLO, PATRICK. IT'S BEEN A DOG'S AGE," Finnigan exclaims to his friend from the old country, Patrick Flannigan, as he comes to the Flannigan home for a visit. The visit becomes prolonged as the one time Vaudevillian, behind in alimony payments, is taken into the Flannigan household.



"HELLO, RALPH, Yes, darling, it's me, Maggie," Penny Buchholz says over the telephone as she sneakily calls her fellow whom her father disapproves.



"GEE, PAPA, A REAL ONE," Rosalie and Rita Flannigan exclaim as they look into the doctor's bag and discover a real stethoscope for them to use while playing nurses. Zena McKay, left, plays Rosalie and Linda Livesley, right, is Rita. Jack Smith plays Patrick Flannigan.